

DISTRICT I  
P.O. Box 1990, Hobbs, NM 88241-1990

DISTRICT II  
P.O. Drawer 80, Artesia, NM 88211-0710

DISTRICT III  
1000 Rio Brazos Rd., Artesia, NM 87410

DISTRICT IV  
P.O. BOX 2088, SANTA FE, N.M. 87504-2088

State of New Mexico  
Energy, Minerals and Natural Resources Department

Form C-102  
Revised February 10, 1994  
Submit to Appropriate District Office  
State Lease - 4 Copies  
Fee Lease - 3 Copies

OIL CONSERVATION DIVISION

P.O. Box 2088  
Santa Fe, New Mexico 87504-2088

☒ AMENDED REPORT

WELL LOCATION AND ACREAGE DEDICATION PLAT

API Number 30-025-30353	Pool Code 40875	Pool Name West Lovington Strawn
Property Code 25479	Property Name ROUSE 5	Well Number 1
OGRID No. 147179	Operator Name CHESAPEAKE OPERATING, INC.	Elevation 3942

Surface Location

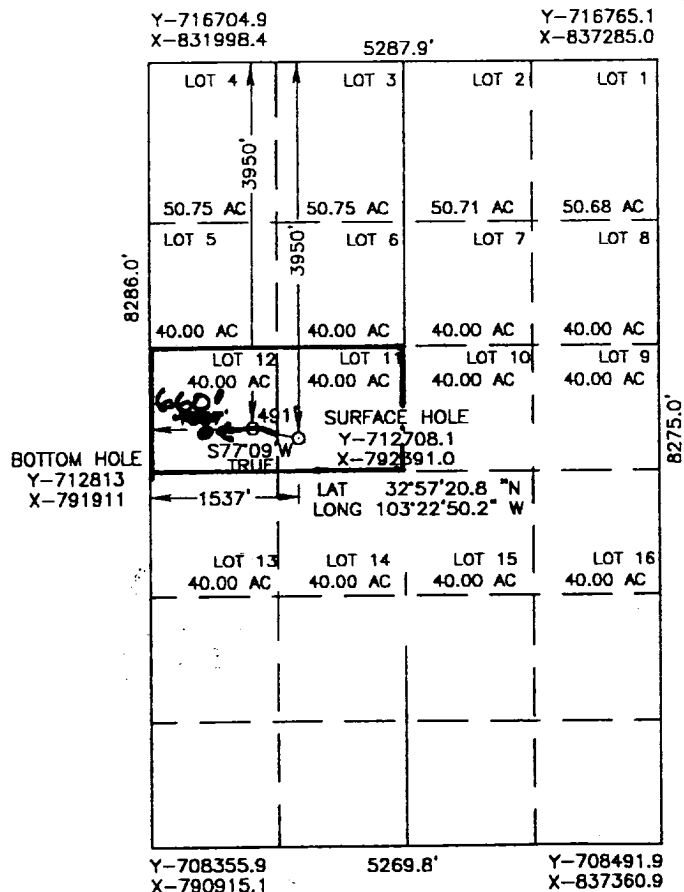
UL or lot No.	Section	Township	Range	Lot Idn	Feet from the	North/South line	Feet from the	East/West line	County
LOT 11	5	16 S	36 E		3950	NORTH	1537	WEST	LEA

Bottom Hole Location If Different From Surface

UL or lot No.	Section	Township	Range	Lot Idn	Feet from the	North/South line	Feet from the	East/West line	County
LOT 12	5	16 S	36 E		3841	NORTH	1057	WEST	LEA
Dedicated Acres	Joint or Infill	Consolidation Code	Order No.						

NO ALLOWABLE WILL BE ASSIGNED TO THIS COMPLETION UNTIL ALL INTERESTS HAVE BEEN CONSOLIDATED  
OR A NON-STANDARD UNIT HAS BEEN APPROVED BY THE DIVISION

NOTE: COORDINATE VALUES  
ARE NAD 27  
NME. LAT. &  
LONG. NAD 83



OPERATOR CERTIFICATION

I hereby certify the the information  
contained herein is true and complete to the  
best of my knowledge and belief.

*Jill Weathers*  
Signature  
Jill WEATHERS  
Printed Name  
Agent  
Title  
5-31-2000  
Date

SURVEYOR CERTIFICATION

I hereby certify that the well location shown  
on this plat was plotted from field notes of  
actual surveys made by me or under my  
supervision and that the same is true and  
correct to the best of my belief.

FEBRUARY 11, 2000

Date Surveyed  
Signature & Seal of  
Professional Surveyor  
NEW MEXICO  
RONALD G. EDSON  
5/15/2000  
00-11-0196  
Certified by: Mr. RONALD G. EDSON 3239  
Professional Surveyor 12641  
McDONALD 12185