

DISTRICT I
P.O. Box 1980, Hobbs, NM 88241-1980

State of New Mexico
Energy, Minerals and Natural Resources Department

Form C-102
Revised February 10, 1994
Submit to Appropriate District Office
State Lease - 4 Copies
Fee Lease - 3 Copies

DISTRICT II
P.O. Drawer DD, Artesia, NM 88211-0719

DISTRICT III
1000 Rio Brazos Rd., Artesia, NM 87410

OIL CONSERVATION DIVISION
P.O. Box 2088

Santa Fe, New Mexico 87504-2088

DISTRICT IV
P.O. BOX 2088, SANTA FE, N.M. 87504-2088

☐ AMENDED REPORT

WELL LOCATION AND ACREAGE DEDICATION PLAT

API Number 30-025-30353	Pool Code 40875	Pool Name West Lovington Strawn
Property Code 25479	Property Name ROUSE 5	Well Number 1 85
OGRID No. 147179	Operator Name CHESAPEAKE OPERATING, INC.	Elevation 3942

Surface Location

UL or lot No.	Section	Township	Range	Lot Idn	Feet from the	North/South line	Feet from the	East/West line	County
LOT 11	5	16 S	36 E		3950	NORTH	1537	WEST	LEA

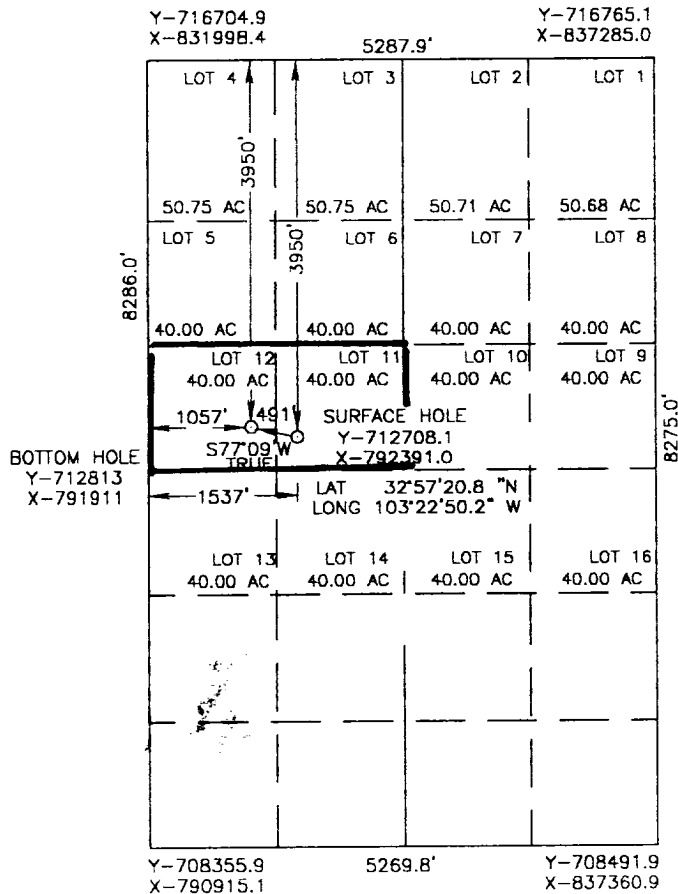
Bottom Hole Location If Different From Surface

UL or lot No.	Section	Township	Range	Lot Idn	Feet from the	North/South line	Feet from the	East/West line	County
LOT 12	5	16 S	36 E		3841	NORTH	1057	WEST	LEA

Dedicated Acres 80	Joint or Infill	Consolidation Code	Order No.
-----------------------	-----------------	--------------------	-----------

NO ALLOWABLE WILL BE ASSIGNED TO THIS COMPLETION UNTIL ALL INTERESTS HAVE BEEN CONSOLIDATED
OR A NON-STANDARD UNIT HAS BEEN APPROVED BY THE DIVISION

NOTE: COORDINATE VALUES
ARE NAD 27
NME. LAT. &
LONG. NAD 83



OPERATOR CERTIFICATION

I hereby certify the the information
contained herein is true and complete to the
best of my knowledge and belief.

Barbara J. Bale
Signature

Barbara J. Bale
Printed Name

Regulatory Analyst
Title

03/17/00
Date

SURVEYOR CERTIFICATION

I hereby certify that the well location shown
on this plat was plotted from field notes of
actual surveys made by me or under my
supervision, and that the same is true and
correct to the best of my belief.

FEBRUARY 11, 2000

Date Surveyed DC

Signature & Seal of
Professional Surveyor

Gary E. Eldson
00-17-0196
3/15/2000

Certificate No. RONALD J. ELDSON 3239
GARY ELDSON 12641
WACON McDONALD 12185

