

NEW MEXICO OIL CONSERVATION COMMISSION WELL LOCATION AND ACREAGE DEDICATION - LAT

Form
Supersedes
Effective

All distances must be from the outer boundaries of the Section

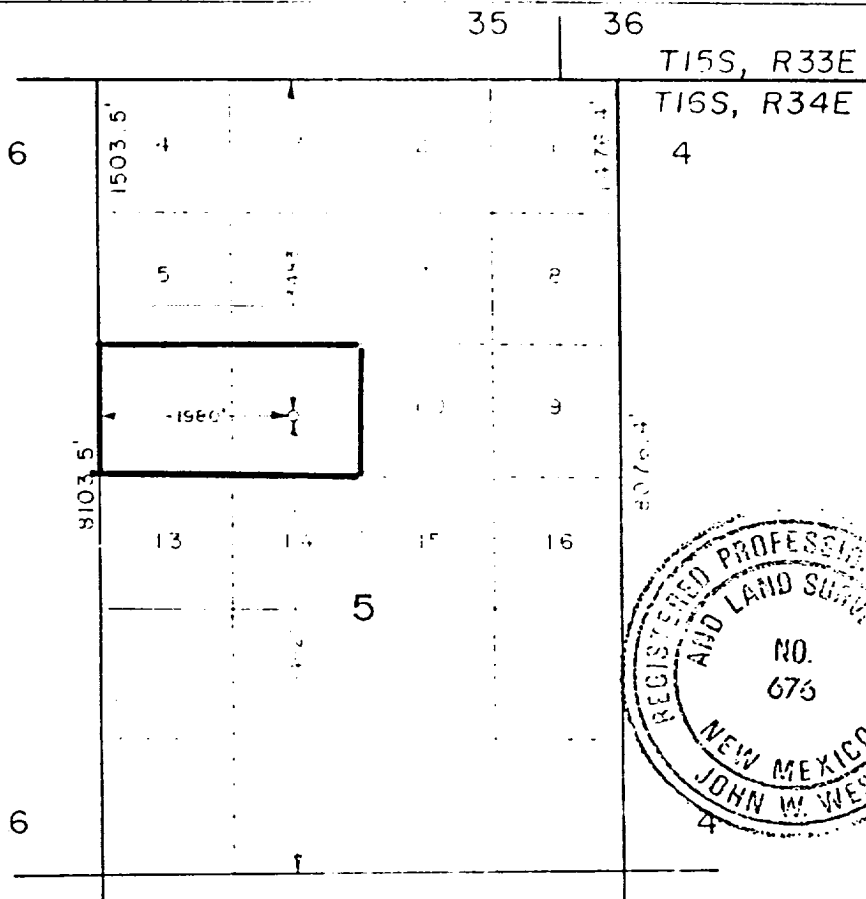
Lessor Santa Fe Energy Co.		Lease N. H. 5A State		Well No. 1
Unit Letter E	Section 5	Township 16	Range 34	County Lea
Actual Portage Location of Well: 4620 feet from the _____ line _____ feet from the _____ line				
Ground Level Elev. 4151.3	Producing Formation Wolfcamp	Pool North Hume - Wolfcamp		Dedicated Acreage 80

1. Outline the acreage dedicated to the subject well by colored pencil or hachure marks on the plat below.
2. If more than one lease is dedicated to the well, outline each and identify the ownership thereof (both as to working interest and royalty).
3. If more than one lease of different ownership is dedicated to the well, have the interests of all owners been consolidated by communitization, unitization, force-pooling, etc?

☐ Yes ☒ No If answer is "yes" type of consolidation _____

If answer is "no," list the owners and tract descriptions which have actually been consolidated (Use reverse side of this form if necessary.) See Reverse Side

No allowable will be assigned to the well until all interests have been consolidated (by communitization, unitization, forced-pooling, or otherwise) or until a non-standard unit, eliminating such interests, has been approved by the Commission.



CERTIFICATION

I hereby certify that the information contained herein is true and complete to the best of my knowledge and belief.

David Slater

Name
David Slater
Position
Drilling Superintendent
Company
Santa Fe Energy Operating Partners, L.P.

Date
4-27-88

I hereby certify that the well location shown on this plat was plotted from the notes of actual surveys made by me or under my supervision, and that the same is true and correct to the best of my knowledge and belief.

Date Surveyed
April 19, 1988

Registered Professional Engineer and/or Land Surveyor

John W. West

Certificate No. **JOHN W. WEST**

The original copy of this form is on file in the Division office.

8 9