

30-025-30502

STATE OF NEW MEXICO  
ENERGY AND MINERALS DEPARTMENT

## OIL CONSERVATION DIVISION

P. O. BOX 2088  
SANTA FE, NEW MEXICO 87501

Form C-101  
Revised 10-1-78

NO. OF COPIES RECEIVED	
DISTRIBUTION	
SANTA FE	
FILE	
U.S.G.S.	
LAND OFFICE	
OPERATOR	

5A. Indicate Type of Lease  
STATE ☒ REC ☐

5. State Oil & Gas Lease No.  
B-7897

## APPLICATION FOR PERMIT TO DRILL, DEEPEN, OR PLUG BACK

1a. Type of Work b. Type of Well OIL WELL <input checked="" type="checkbox"/> GAS WELL <input type="checkbox"/> OTHER <input type="checkbox"/> SINGLE ZONE <input checked="" type="checkbox"/> MULTIPLE ZONE <input type="checkbox"/>		2. Name of Operator Texaco Producing Inc.		7. Unit Agreement Name	
3. Address of Operator P. O. Box 728, Hobbs, New Mexico 88240		8. Farm or Lease Name State P		9. Well No. 14	
4. Location of Well UNIT LETTER <u>F</u> LOCATED <u>1830</u> FEET FROM THE <u>North</u> LINE AND <u>1980</u> FEET FROM THE <u>West</u> LINE OF SEC. <u>32</u> TWP. <u>16-S</u> RGE. <u>37-E</u> NMPM		10. Field and Pool, or Wildcat Lovington Penn, NE		12. County Lea	
11. Elevations (Show whether DF, KT, etc.) 3805 GR		21A. Kind & Status Plug. Bond Blanket		19. Proposed Depth 11,300'	
		21B. Drilling Contractor		19A. Formation Strawn Bank	
				20. Rotary or C.T. Rotary	
				22. Approx. Date Work will start December 15, 1988	

23. PROPOSED CASING AND CEMENT PROGRAM

SIZE OF HOLE	SIZE OF CASING	WEIGHT PER FOOT	SETTING DEPTH	SACKS OF CEMENT	EST. TOP
24"	20"	94#	40'	Redimix	Surface
17-1/2"	13-3/8"	48#	450'	550	Circulate
12-1/4"	8-5/8"	32#	4400'	1850	Circulate
7-7/8"	5-1/2"	15.5# & 17#	11,350'	1650	Circulate

## CEMENTING PROGRAM

SURFACE CASING: 550 sacks Class "H", 2% CaCl<sub>2</sub>, 1/4# Flocele, (15.6 ppg, 1.13 cu. ft./sx.),  
INTERMEDIATE CASING: 1600 sacks Lightweight, 15# Salt, 1/4# Flocele, (12.7 ppg, 2.10 cu. ft/sx), 250 sacks Class H, 1/4# Flocele (15.6 ppg, 1.13 cu. ft/sx)  
PRODUCTION CASING: 1st Stage: 200 sacks Lightweight, 1/4# Flocele (12.7 ppg, 1.34 cu. ft/sx)  
250 sacks Class "H", .6% Halad-9, 3# Salt, 1/4# Flocele (15.4 ppg, 1.25 cu. ft./sx.)  
2nd Stage: 600 sacks Lightweight, 1/4# Flocele, (12.7 ppg, 1.84 cu. ft/sx)  
600 sacks Class "H", .6% Halad-9, 1/4# Flocele, 3# Salt (15.4 ppg, 1.25 cu. ft/sx). DV Tool @ 3400'.

ALL OTHER WELLS IN THE 1/4, 1/4 SECTION ARE OPERATED BY TEXACO PRODUCING INC.

IN ABOVE SPACE DESCRIBE PROPOSED PROGRAMS IF PROPOSAL IS TO DEEPEN OR PLUG BACK, GIVE DATA ON PRESENT PRODUCTIVE ZONE AND PROPOSED NEW PRODUCTIVE ZONE. GIVE BLOWOUT PREVENTER PROGRAM, IF ANY.

I hereby certify that the information above is true and complete to the best of my knowledge and belief.

Signed W. B. Cade Title District Operations Manager Date 11/08/88

ORIGINAL SIGNED BY JERRY SEXTON  
DISTRICT SUPERVISOR

APPROVED BY \_\_\_\_\_ TITLE \_\_\_\_\_ DATE \_\_\_\_\_

CONDITIONS OF APPROVAL, IF ANY:

Permit Expires 6 Months From Approval  
Date Unless Drilling Underway.

NOV 11 1988

All distances must be from the outer boundaries of the Section.

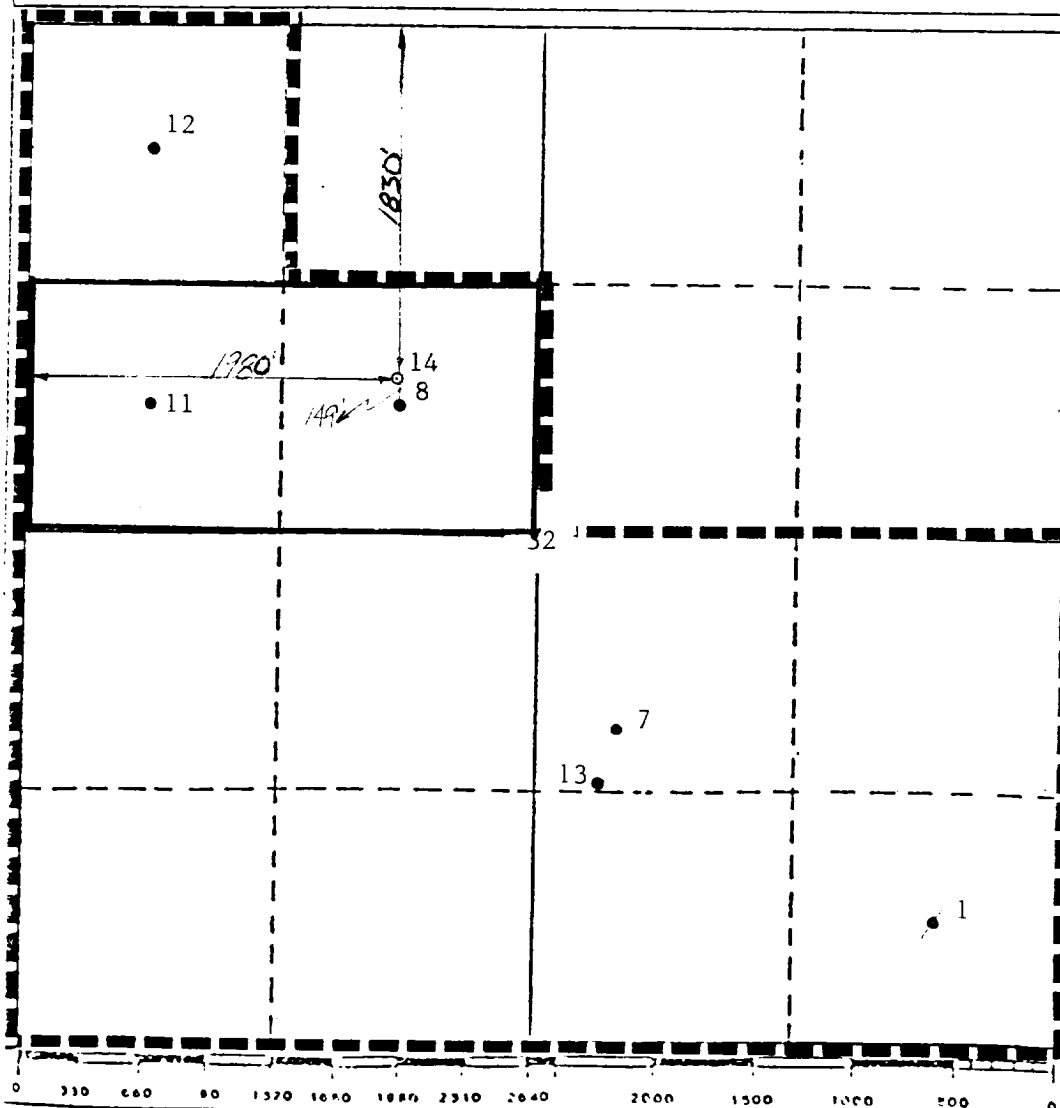
Operator <b>Texaco Producing Inc.</b>		Lease <b>State "P"</b>		Well No. <b>14</b>
Unit Letter <b>F</b>	Section <b>32</b>	Township <b>16-S</b>	Range <b>37-E</b>	County <b>Lea</b>
Actual Footage Location of Well: <b>1830</b> feet from the <b>North</b> line and <b>1980'</b> feet from the <b>West</b> line				
Ground Level Elev. <b>3814'</b>	Producing Formation <b>Strawn Bank</b>	Pool <b>Lovington Penn. Northeast</b>	Dedicated Acreage: <b>80</b> Acres	

1. Outline the acreage dedicated to the subject well by colored pencil or hatchure marks on the plat below.
2. If more than one lease is dedicated to the well, outline each and identify the ownership thereof (both as to working interest and royalty).
3. If more than one lease of different ownership is dedicated to the well, have the interests of all owners been consolidated by communitization, unitization, force-pooling, etc?

☐ Yes ☐ No If answer is "yes," type of consolidation \_\_\_\_\_

If answer is "no," list the owners and tract descriptions which have actually been consolidated. (Use reverse side of this form if necessary.) \_\_\_\_\_

No allowable will be assigned to the well until all interests have been consolidated (by communitization, unitization, forced-pooling, or otherwise) or until a non-standard unit, eliminating such interests, has been approved by the Division.



CERTIFICATION

I hereby certify that the information contained herein is true and complete to the best of my knowledge and belief.

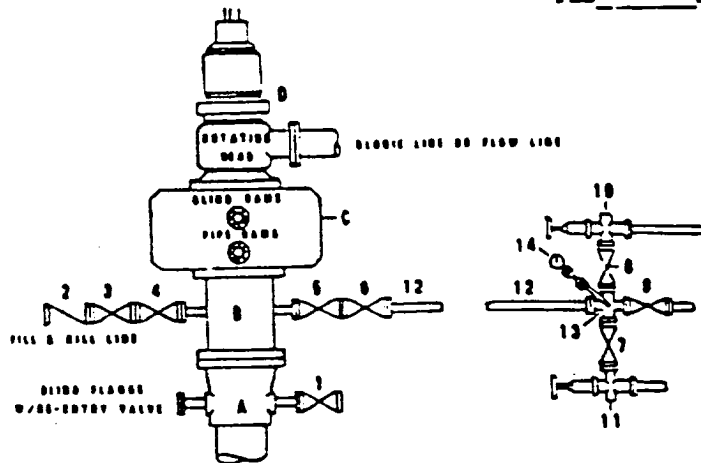
Name B. L. Eiland  
Position Division Surveyor  
Company Texaco Producing Inc.  
Date 10/28/1988

I hereby certify that the well location shown on this plat was plotted from field notes of actual surveys made by me or under my supervision, and that the same is true and correct to the best of my knowledge and belief.

Date Surveyed 10/28/1988  
Registered Professional Engineer and/or Land Surveyor  
B. L. Eiland  
Certificate No. 4386

**DRILLING CONTROL**  
**CONDITION II-B 3000 WP**  
**FOR AIR DRILLING OR**  
**WHERE YATES AIR BLOWS ARE EXPECTED**

H<sub>2</sub>S TRIM REQUIRED  
 YES \_\_\_\_\_ NO \_\_\_\_\_



**DRILLING CONTROL**

**MATERIAL LIST - CONDITION II - B**  
**FOR AIR DRILLING**

- |            |   |
|------------|---|
| A          | Texaco Wellhead   |
| B          | 3000# W.P. drilling spool with a 2" minimum flanged outlet for kill-line and 3" minimum flanged outlet for choke line   |
| C          | 3000# W.P. Dual ram type preventer, hydraulic operated with 1" steel, 3000# W.P. control lines (where sub-structure height is adequate, 2-3000# W.P. single ram type preventers may be utilized.) |
| D          | Rotating Head and extended Blosie Line.   |
| 1,3,4, 7,8 | 2" minimum 3000# W.P. flanged full opening steel gate valve, or Halliburton Lo Torc Plug valve.   |
| 2          | 2" minimum 3000# W.P. back pressure valve   |
| 5,6,9      | 3" minimum 3000# W.P. flanged full opening steel gate valve, or Halliburton Lo Torc Plug valve.   |
| 12         | 3" minimum schedule 80, Grade "B", seamless line pipe   |
| 13         | 2" minimum x 3" minimum 3000# W.P. flanged cross  |
| 10, 11     | 2" minimum 3000# W.P. adjustable choke bodies   |
| 14         | Cameron Mud Gauge or equivalent (location optional in choke line.)  |



**TEXACO, INC.**  
 MIDLAND DIVISION  
 MIDLAND, TEXAS



SCALE	DATE	EST. NO.	DWG. NO.
DRAWN BY			
CHECKED BY			
APPROVED BY			

**EXHIBIT C**

68/85/E 8004

173

FIVED

100 0338

(NOB) 10000