

Submit to Appropriate
District Office
State Lease - 6 copies
Fee Lease - 5 copies

State of New Mexico
Energy, Minerals and Natural Resources Department

Form C-101
Revised 1-1-89

OIL CONSERVATION DIVISION

DISTRICT I
P.O. Box 1980, Hobbs, NM 88240

P.O. Box 2088

Santa Fe, New Mexico 87504-2088

DISTRICT II
P.O. Drawer DD, Artesia, NM 88210

DISTRICT III
1000 Rio Brazos Rd., Aztec, NM 87410

API NO. (assigned by OCD on New Wells)
30-025-30679

5. Indicate Type of Lease
STATE ☒ FEE ☐

6. State Oil & Gas Lease No.
B-2366

7. Lease Name or Unit Agreement Name

Leaker "CC"

8. Well No.
9

9. Pool name or Wildcat
Maljamar Grbg SA

APPLICATION FOR PERMIT TO DRILL, DEEPEN, OR PLUG BACK

1a. Type of Work:

DRILL ☒ RE-ENTER ☐ DEEPEN ☐ PLUG BACK ☐

b. Type of Well:

OIL WELL ☒ GAS WELL ☐ OTHER ☐ SINGLE ZONE ☒ MULTIPLE ZONE ☐

2. Name of Operator

Marbob Energy Corporation

3. Address of Operator

P. O. Drawer 217, Artesia, NM 88210

4. Well Location

Unit Letter **J** : **1650** Feet From The **South** Line and **2310** Feet From The **East** Line

Section **16** Township **17S** Range **32E** NMPM **Lea** County

10. Proposed Depth

6300'

11. Formation

Grbg SA

12. Rotary or C.T.

Rotary

13. Elevations (Show whether DF, RT, GR, etc.)

4021.8' GR

14. Kind & Status Plug. Bond

Statewide active

15. Drilling Contractor

LaRue Drilling Co.

16. Approx. Date Work will start

10/1/89

17.

PROPOSED CASING AND CEMENT PROGRAM

SIZE OF HOLE	SIZE OF CASING	WEIGHT PER FOOT	SETTING DEPTH	SACKS OF CEMENT	EST. TOP
12 1/4"	8 5/8"	24#	900'	to circulate	
7 7/8"	5 1/2"	17#	6300'	Sufficiently attempt to	
				circulate	

We propose to drill to 900'; run and cement 8 5/8" casing;
drill on to 6300' to test the San Andres zone; run and
cement 5 1/2" casing; put on production.

NOTE: On production string, a fluid caliber will be run, will
figure cement w/25% excess, attempt to circulate.

IN ABOVE SPACE DESCRIBE PROPOSED PROGRAM: IF PROPOSAL IS TO DEEPEN OR PLUG BACK, GIVE DATA ON PRESENT PRODUCTIVE ZONE AND PROPOSED NEW PRODUCTIVE ZONE. GIVE BLOWOUT PREVENTER PROGRAM, IF ANY.

I hereby certify that the information above is true and complete to the best of my knowledge and belief.

SIGNATURE **Rhonda Nelson** TITLE **Production Clerk** DATE **9/21/89**

TYPE OR PRINT NAME **Rhonda Nelson** TELEPHONE NO. **748-3303**

(This space for State Use)

ORIGINAL SIGNED BY JERRY SEXTON
DISTRICT I SUPERVISOR

SEP 25 1989

APPROVED BY _____ TITLE _____ DATE _____

CONDITIONS OF APPROVAL, IF ANY:

Permit Expires 6 Months From Approval
Date Unless Drilling Underway.

SEP 22 1989

OCD
HOBBS OFFICE

Submit to Appropriate
District Office
State Lease - 4 copies
Fee Lease - 3 copies

State of New Mexico
Energy, Minerals and Natural Resources Department

Form C-102
Revised 1-1-89

OIL CONSERVATION DIVISION

P.O. Box 2088

Santa Fe, New Mexico 87504-2088

DISTRICT I

P.O. Box 1980, Hobbs, NM 88240

DISTRICT II

P.O. Drawer DD, Artesia, NM 88210

DISTRICT III

1000 Rio Brazos Rd., Aztec, NM 87410

WELL LOCATION AND ACREAGE DEDICATION PLAT

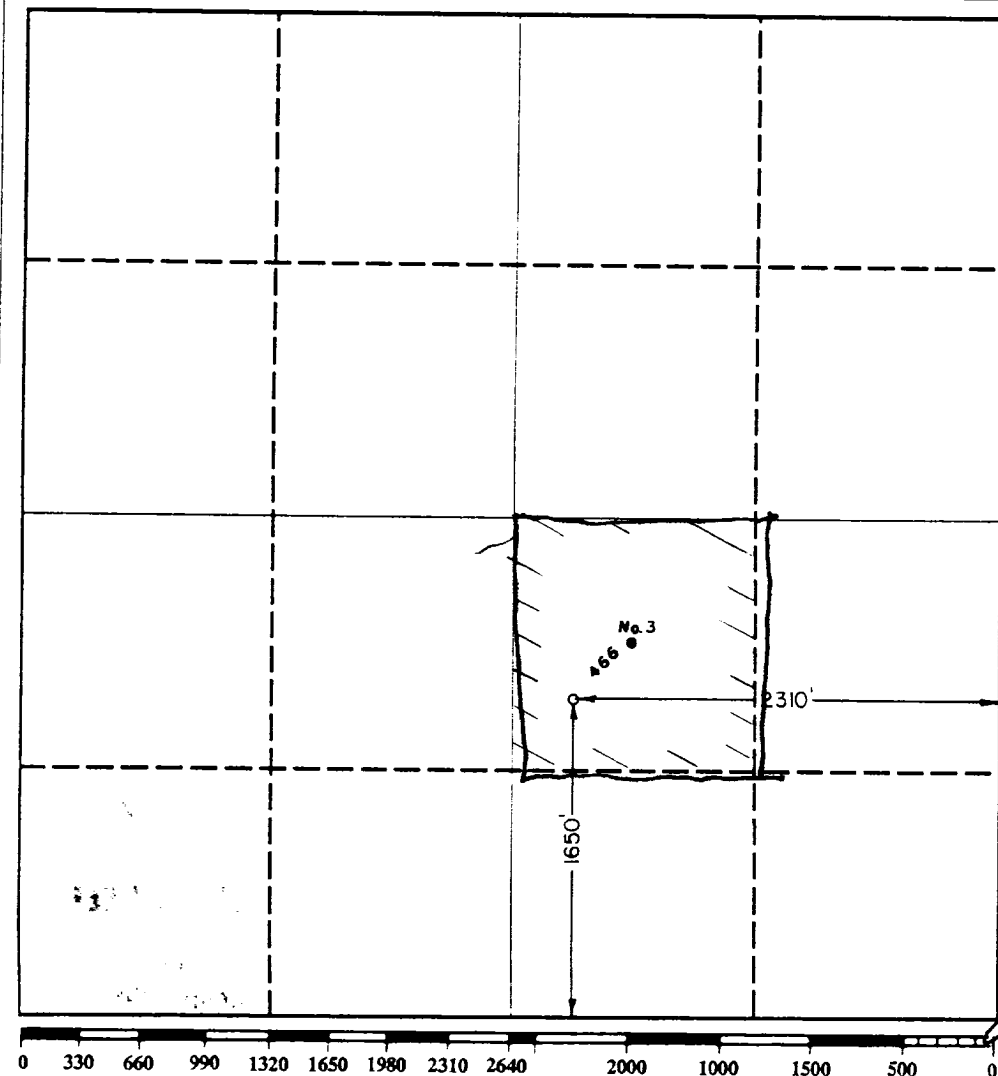
All Distances must be from the outer boundaries of the section

Operator Marbob Energy Corp.		Lease Leaker State CC		Well No. 9
Unit Letter J	Section 16	Township 17 South	Range 32 East	County Lea
Actual Footage Location of Well: 1650 feet from the South line and 2310 feet from the East line				
Ground level Elev. 4021.8	Producing Formation Grayburg San Andres	Pool Maljamar Grayburg San Andres	Dedicated Acreage: 40 Acres	

1. Outline the acreage dedicated to the subject well by colored pencil or hatchure marks on the plat below.
2. If more than one lease is dedicated to the well, outline each and identify the ownership thereof (both as to working interest and royalty).
3. If more than one lease of different ownership is dedicated to the well, have the interest of all owners been consolidated by communitization, unitization, force-pooling, etc.?
☐ Yes ☐ No If answer is "yes" type of consolidation _____

If answer is "no" list the owners and tract descriptions which have actually been consolidated. (Use reverse side of this form if necessary.)

No allowable will be assigned to the well until all interests have been consolidated (by communitization, unitization, forced-pooling, or otherwise) or until a non-standard unit, eliminating such interest, has been approved by the Division.



OPERATOR CERTIFICATION

I hereby certify that the information contained herein is true and complete to the best of my knowledge and belief.

Signature

Printed Name

Deborah Rich

Position

Production Clerk

Company

Marbob Energy Corp.

Date

9-22-89

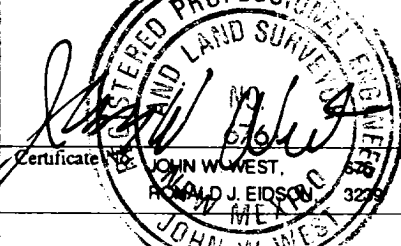
SURVEYOR CERTIFICATION

I hereby certify that the well location shown on this plat was plotted from field notes of actual surveys made by me or under my supervision, and that the same is true and correct to the best of my knowledge and belief.

Date Surveyed

September 21, 1989

Signature & Seal of
Professional Surveyor



06-05-1807
173

RECEIVED

SEP 22 1989

OCD
HOBBS OFFICE