

UNIT STATES
DEPARTMENT OF THE INTERIOR
BUREAU OF LAND MANAGEMENT

SUBMIT IN TRIPLIY
(Other instructions
reverse side)

Budget Bureau No. 1004-0135

Expires August 31, 1985

5. LEASE DESIGNATION AND SERIAL NO.

LC-058514

6. IF INDIAN, ALLOTTEE OR TRIBE NAME

7. UNIT AGREEMENT NAME

8. FARM OR LEASE NAME

Pearsall BX

9. WELL NO.

4

10. FIELD AND POOL, OR WILDCAT

Maljamar Grbg SA

11. SEC., T., R., W., OR BLK. AND
SURVEY OR AREA

Sec. 34-T17S-R32E

12. COUNTY OR PARISH 13. STATE

Lea

N.M.

1. OIL ☒ GAS ☐ OTHER ☐ Application to Drill Well

2. NAME OF OPERATOR

Marbob Energy Corporation

3. ADDRESS OF OPERATOR

P.O. Drawer 217, Artesia, New Mexico 88211-0217

4. LOCATION OF WELL (Report location clearly and in accordance with any State requirements.
See also space 17 below.)
At surface

330 FNL 330 FEL

14. PERMIT NO.

15. ELEVATIONS (Show whether OF, FT, GR, etc.)

3949.0' GR

16. Check Appropriate Box To Indicate Nature of Notice, Report, or Other Data

NOTICE OF INTENTION TO:

SUBSEQUENT REPORT OF:

TEST WATER SHUT-OFF ☐

PULL OR ALTER CASING ☐

WATER SHUT-OFF ☐

REPAIRING WELL ☐

FRACTURE TREAT ☐

MULTIPLE COMPLETE ☐

FRACTURE TREATMENT ☐

ALTERING CASING ☐

SHOOT OR ACIDIZE ☐

ABANDON* ☐

SHOOTING OR ACIDIZING ☐

ABANDONMENT* ☐

REPAIR WELL ☐

CHANGE PLANS ☐

(Other) Change in cemt program ☒

(Note: Report results of multiple completion on Well
Completion or Recompletion Report and Log form.)

17. DESCRIBE PROPOSED OR COMPLETED OPERATIONS (Clearly state all pertinent details, and give pertinent dates, including estimated date of starting and proposed work. If well is directionally drilled, give subsurface locations and measured and true vertical depths for all markers and zones pertinent to this work.) *

TO AMEND APPLICATION FOR PERMIT TO DRILL

23.

PROPOSED CASING AND CEMENTING PROGRAM

SIZE OF HOLE	SIZE OF CASING	WEIGHT PER FOOT	SETTING DEPTH	QUANTITY OF CEMENT
12 1/4"	8 5/8"	24#	800'	To circulate
7 7/8"	5 1/2"	17#	4650'	Sufficiently attempt to circulate.

NOTE: On production string, a fluid caliber will be run, will figure cement w/25% excess, attempt to circulate.

RECEIVED
SEP 26 11 28 AM '89
CARLSBAD DISTRICT
AREA HEADQUARTERS

18. I hereby certify that the foregoing is true and correct

SIGNED

TITLE Production Clerk

DATE 9/20/89

(This space for Federal or State office use)

APPROVED Orig. Signed by Shannon J. Shaw

TITLE PETROLEUM ENGINEER

DATE 10-6-89

CONDITIONS OF APPROVAL, IF ANY:

*See Instructions on Reverse Side

RECEIVED

OCT 19 1989

OCD
HOBBS OFFICE

UNITED STATES
DEPARTMENT OF THE INTERIOR
GEOLOGICAL SURVEY

APPLICATION FOR PERMIT TO DRILL, DEEPEN, OR PLUG BACK

1a. TYPE OF WORK
DRILL ☒ DEEPEN ☐ PLUG BACK ☐

b. TYPE OF WELL
OIL WELL ☒ GAS WELL ☐ OTHER ☐
SINGLE ZONE ☒ MULTIPLE ZONE ☐

2. NAME OF OPERATOR
Marbob Energy Corporation

3. ADDRESS OF OPERATOR
P.O. Drawer 217, Artesia, NM 88210

4. LOCATION OF WELL (Report location clearly and in accordance with any State requirements.)
At surface
330 FNL 330 FEL
At proposed prod. zone
same

14. DISTANCE IN MILES AND DIRECTION FROM NEAREST TOWN OR POST OFFICE*
40.5 air miles east of Artesia, NM

15. DISTANCE FROM PROPOSED* LOCATION TO NEAREST PROPERTY OR LEASE LINE, FT.
(Also to nearest drlg. unit line, if any) 330'

18. DISTANCE FROM PROPOSED LOCATION* TO NEAREST WELL, DRILLING COMPLETED, OR APPLIED FOR, ON THIS LEASE, FT. 160'

21. ELEVATIONS (Show whether DF, RT, GR, etc.)
3949.0' GR

23. PROPOSED CASING AND CEMENTING PROGRAM

SIZE OF HOLE	SIZE OF CASING	WEIGHT PER FOOT	SETTING DEPTH	QUANTITY OF CEMENT
1 7/8"	8 5/8"	24#	800'	Sufficient to circ 1500 sx
7/8"	5 1/2"	17#	4650'	Tie back to surf csq

Pay zone will be selectively perforated and stimulated as needed for optimum production.

- Attached are:
1. Location & acreage dedication plat
 2. Supplemental drilling data
 3. Surface Use Plan

IN ABOVE SPACE DESCRIBE PROPOSED PROGRAM: If proposal is to deepen or plug back, give data on present productive zone and proposed new productive zone. If proposal is to drill or deepen directionally, give pertinent data on subsurface locations and measured and true vertical depths. Give blowout preventer program, if any.

24. SIGNED Phonda Nelson TITLE Production Clerk DATE 8/28/89

(This space for Federal or State office use)

PERMIT NO. _____ APPROVAL DATE _____

APPROVED BY Orig. Signed by Richard L. Manion AREA MANAGER CARLSBAD RESOURCE DATE 10-6-89

CONDITIONS OF APPROVAL, IF ANY:

RECEIVED

OCT 19 1989

OCD
HOBBS OFFICE

NEW MEXICO OIL CONSERVATION COMMISSION
WELL LOCATION AND ACREAGE DEDICATION PLAT

Form C-102
Supersedes C-128
Effective 1-1-65

All distances must be from the outer boundaries of the Section.

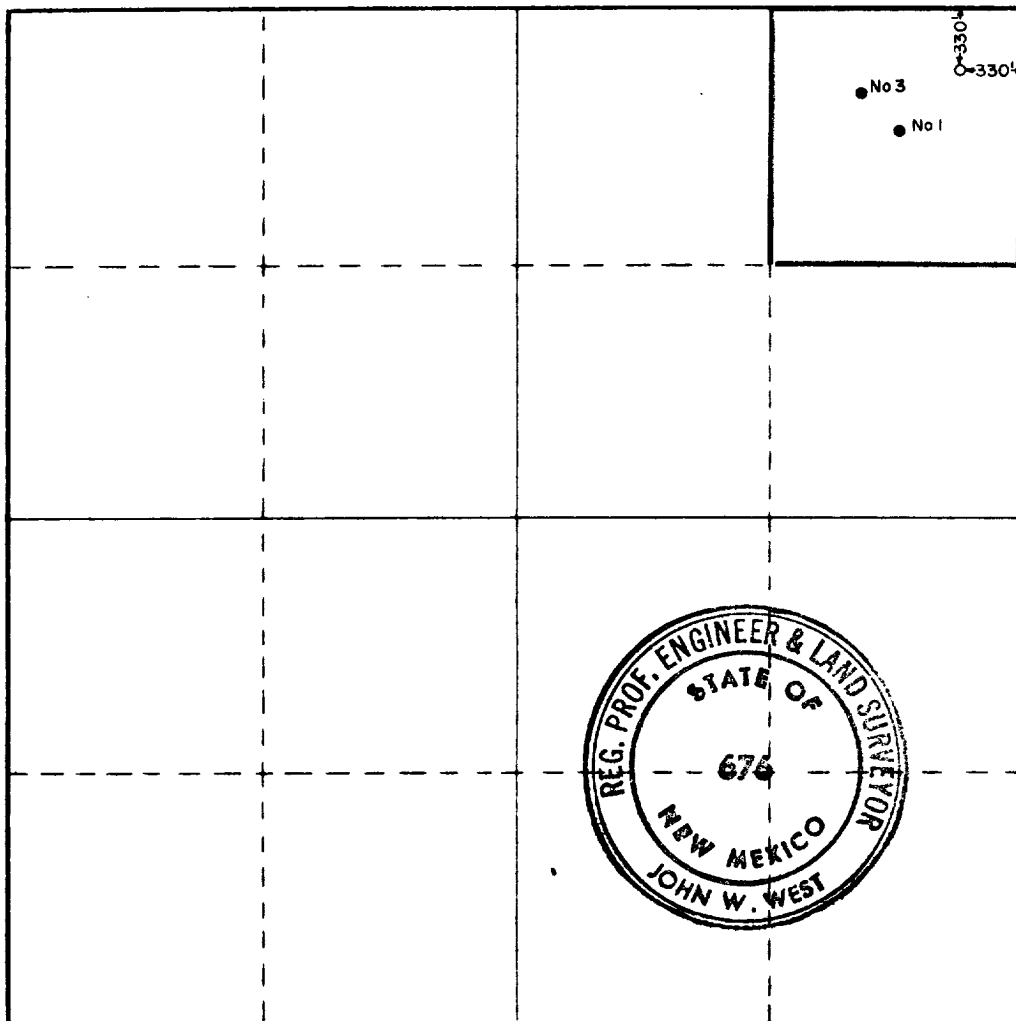
Operator MARBOB ENERGY CORP.			Lease PEARSALL BX		Well No. 4
Unit Letter A	Section 34	Township 17 SOUTH	Range 32 EAST	County LEA	
Actual Footage Location of Well: 330 feet from the NORTH line and 330 feet from the EAST line					
Ground Level Elev. 3949.0	Producing Formation Grayburg San Andres		Pool Maljamar Grayburg San Andres	Dedicated Acreage: 40 Acres	

1. Outline the acreage dedicated to the subject well by colored pencil or hachure marks on the plat below.
2. If more than one lease is dedicated to the well, outline each and identify the ownership thereof (both as to working interest and royalty).
3. If more than one lease of different ownership is dedicated to the well, have the interests of all owners been consolidated by communitization, unitization, force-pooling, etc?

☐ Yes ☐ No If answer is "yes," type of consolidation _____

If answer is "no," list the owners and tract descriptions which have actually been consolidated. (Use reverse side of this form if necessary.) _____

No allowable will be assigned to the well until all interests have been consolidated (by communitization, unitization, forced-pooling, or otherwise) or until a non-standard unit, eliminating such interests, has been approved by the Commission.



CERTIFICATION

I hereby certify that the information contained herein is true and complete to the best of my knowledge and belief.

Rhonda Nelson

Name

Rhonda Nelson

Position

Production Clerk

Company

Marbob Energy Corporation

Date

August 28, 1989

I hereby certify that the well location shown on this plat was plotted from field notes of actual surveys made by me or under my supervision, and that the same is true and correct to the best of my knowledge and belief.

Date Surveyed

June 5, 1987

Registered Professional Engineer and/or Land Surveyor

Ronald J. Eidson

Certificate No. JOHN W. WEST, 676

RONALD J. EIDSON, 3239

JULY 1979

PAGE

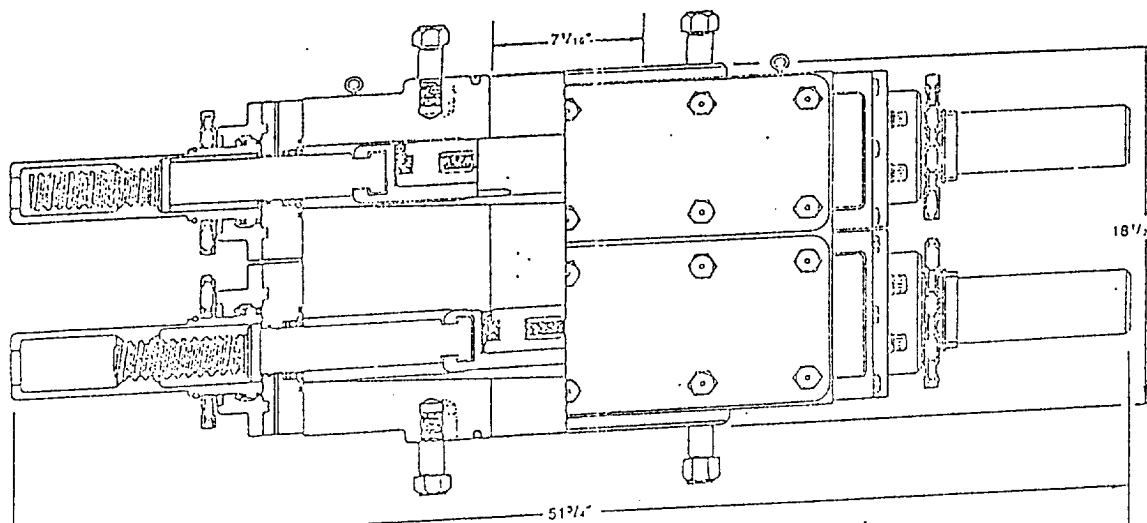
 Rig
Equipment


Figure 4-2

DIMENSIONS AND WEIGHTS

		Manual
Weight	Single (pounds)	1,272
	Double (pounds)	2,335
Overall height, less studs	Single (inches)	10
	Double (inches)	18 1/2
Overall length (inches)		51 3/4
Overall width, less handwheel (inches)		20 1/4
Opening through preventer (inches)		7 1/16
Working pressure (psi)		3,000
Test pressure (psi)		6,000
Handwheel diameter (inches)		20
Ring joint gasket API number		R-45

SUP Exhibit "E"
 Marbob Energy Corporation
 Pearsall BX NO 4
 NE/4 NE/4, Section 34, T-17S, R-32E
 Lea County, New Mexico