

Submit to Appropriate District Office  
 Lease - 4 copies  
 Lease - 3 copies

State of New Mexico  
 Energy, Minerals and Natural Resources Department

Form C-102  
 Revised 1-1-89

**OIL CONSERVATION DIVISION**  
 P.O. Box 2088  
 Santa Fe, New Mexico 87504-2088

**DISTRICT I**  
 P.O. Box 1980, Hobbs, NM 88240

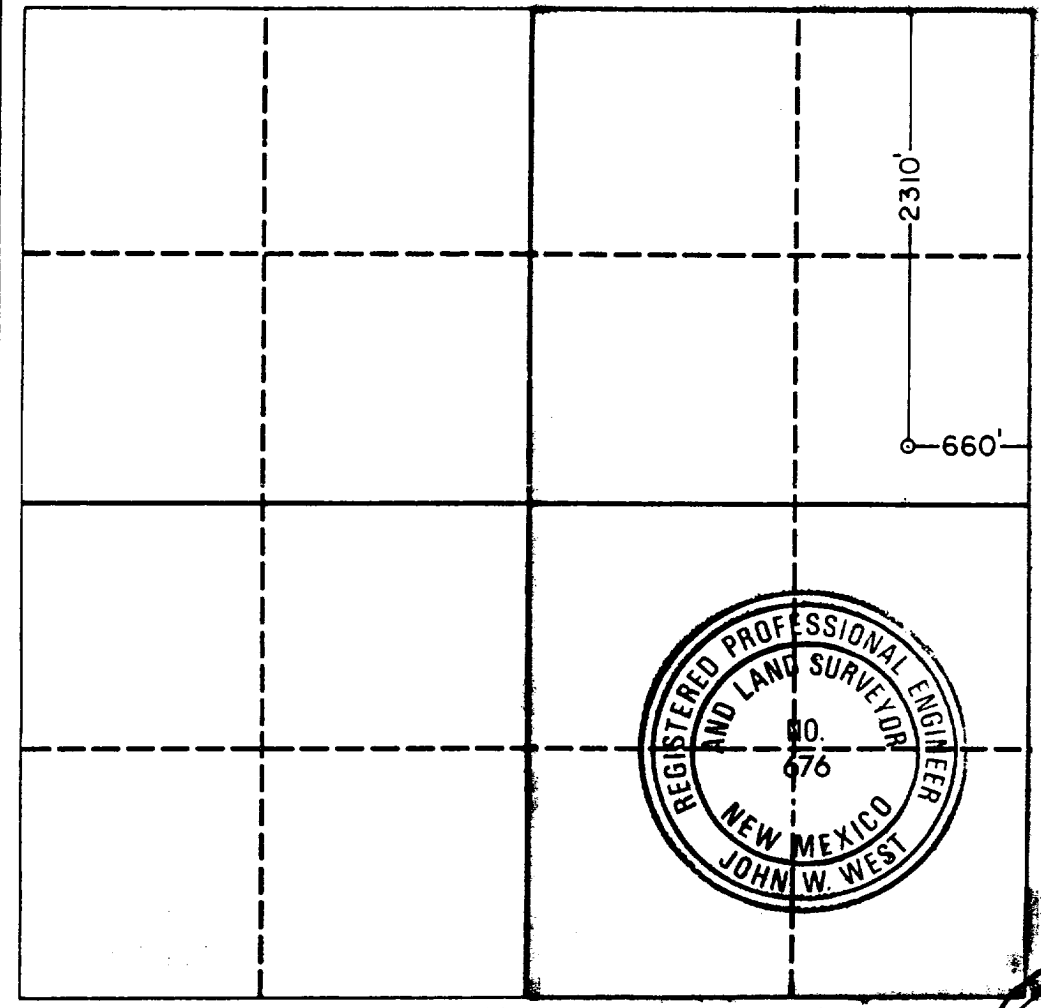
**DISTRICT II**  
 P.O. Drawer DD, Artesia, NM 88210

**DISTRICT III**  
 1000 Rio Brazos Rd., Aztec, NM 87410

**WELL LOCATION AND ACREAGE DEDICATION PLAT**  
 All Distances must be from the outer boundaries of the section

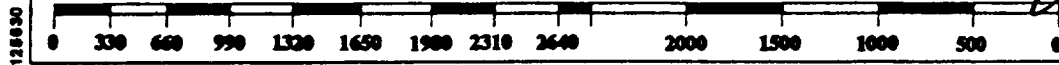
Operator BRIDGE OIL COMPANY, L.P.			Lease Julie Culp <i>com</i>		Well No. 2
Unit Letter H	Section 34	Township 15 South	Range 35 East	County NMPM Lea	
Actual Footage Location of Well: 2310 feet from the North line and 660 feet from the East line					
Ground level Elev. 3954.9	Producing Formation Mississippian		Pool Wildcat	Dedicated Acreage: 320 Acres	

- Outline the acreage dedicated to the subject well by colored pencil or hatchure marks on the plat below.
- If more than one lease is dedicated to the well, outline each and identify the ownership thereof (both as to working interest and royalty).
- If more than one lease of different ownership is dedicated to the well, have the interest of all owners been consolidated by communitization, unitization, force-pooling, etc.?  
 Yes     No    If answer is "yes" type of consolidation Communitization pending  
 If answer is "no" list the owners and tract descriptions which have actually been consolidated. (Use reverse side of this form if necessary.)  
No allowable will be assigned to the well until all interests have been consolidated (by communitization, unitization, forced-pooling, or otherwise) or until a non-standard unit, eliminating such interest, has been approved by the Division.



**OPERATOR CERTIFICATION**  
 I hereby certify that the information contained herein is true and complete to the best of my knowledge and belief.  
 Signature: *Dora McGough*  
 Printed Name: Dora McGough  
 Position: Sr. Regulatory Analyst  
 Company: Bridge Oil Company, L.P.  
 Date: July 25, 1990

**SURVEYOR CERTIFICATION**  
 I hereby certify that the well location shown on this plat was plotted from field notes of actual surveys made by me or under my supervision, and that the same is true and correct to the best of my knowledge and belief.  
 Date Surveyed: March 28, 1990  
 Signature & Seal of Professional Surveyor: *John W. West*  
 Certificate No. JOHN W. WEST, 676  
 RONALD J. EIDSON, 3239



128830