

All distances must be from the outer boundaries of the Section.

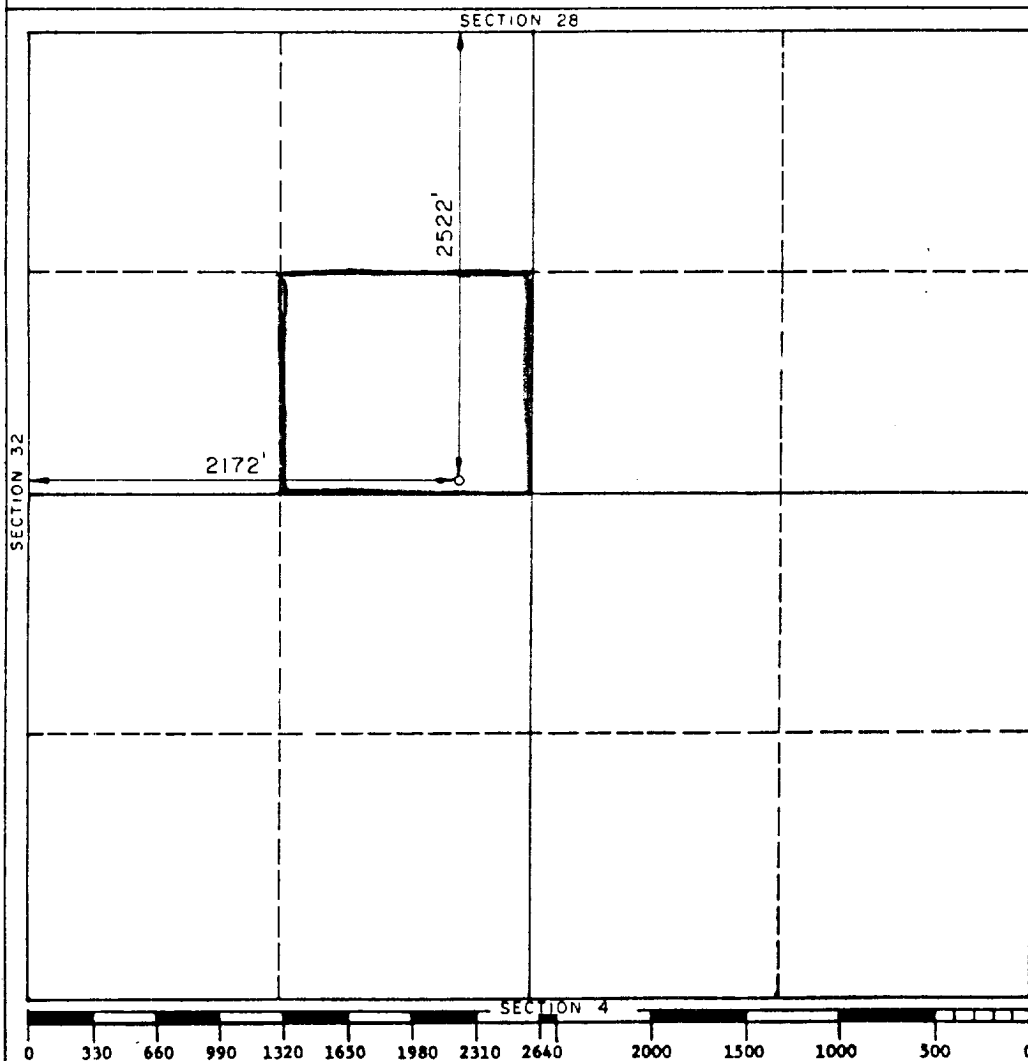
Operator ANADARKO PETROLEUM CORPORATION			Lease SMITH		Well No. #1
Unit Letter F	Section 33	Township 16-SOUTH	Range 38-EAST	County LEA	
Actual Footage Location of Well:					
2522 feet from the NORTH line and		2172 feet from the WEST line			
Ground Level Elev. 3710'	Producing Formation Strawn	Pool Wilcat	Dedicated Acreage: 40 Acres		

1. Outline the acreage dedicated to the subject well by colored pencil or hachure marks on the plat below.
2. If more than one lease is dedicated to the well, outline each and identify the ownership thereof (both as to working interest and royalty).
3. If more than one lease of different ownership is dedicated to the well, have the interests of all owners been consolidated by communitization, unitization, force-pooling, etc?

☒ Yes ☐ No If answer is "yes, type of consolidation Case No. 9807 Order No. R-9046

If answer is "no," list the owners and tract descriptions which have actually been consolidated. (Use reverse side of this form if necessary.)

No allowable will be assigned to the well until all interests have been consolidated (by communitization, unitization, forced-pooling, or otherwise) or until a non-standard unit, eliminating such interests, has been approved by the Division.



CERTIFICATION

I hereby certify that the information contained herein is true and complete to the best of my knowledge and belief.

*Paul D. Hingley*  
Name

Field Foreman

Position

Anadarko Pet. Corp.

Company

April 19, 1990

Date

I hereby certify that the well location shown on this plat was plotted from field notes of actual surveys made by me or under my supervision, and that the same is true and correct to the best of my knowledge and belief.

April 13, 1990

Date Surveyed

Earl Foote

Registered Land Surveyor

*Earl Foote*  
NEW MEXICO  
REGISTERED PROFESSIONAL LAND SURVEYOR  
8278  
Certificate No.  
8278

RECEIVED

APR 19 1990

OCD  
HOBBS OFFICE