

Submit to Appropriate  
District Office  
State Lease - 6 copies  
Fee Lease - 5 copies

State of New Mexico  
Energy, Minerals and Natural Resources Department

Form C-101  
Revised 1-1-89

DISTRICT I  
P.O. Box 1980, Hobbs, NM 88240

DISTRICT II  
P.O. Drawer DD, Artesia, NM 88210

DISTRICT III  
1000 Rio Brazos Rd., Aztec, NM 87410

OIL CONSERVATION DIVISION  
P.O. Box 2088  
Santa Fe, New Mexico 87504-2088

API NO. (assigned by OCD on New Wells)  
30-025-30929

5. Indicate Type of Lease  
STATE ☐ FEE ☒

6. State Oil & Gas Lease No.  
L-990

7. Lease Name or Unit Agreement Name

West Knowles

8. Well No.  
12

9. Pool name or Wildcat  
Shipp Strawn

APPLICATION FOR PERMIT TO DRILL, DEEPEN, OR PLUG BACK

1a. Type of Work:

DRILL ☒ RE-ENTER ☐ DEEPEN ☐ PLUG BACK ☐

b. Type of Well:

OIL WELL ☒ GAS WELL ☐ OTHER ☐ SINGLE ZONE ☒ MULTIPLE ZONE ☐

2. Name of Operator

Conoco Inc.

3. Address of Operator

10 Desta Drive West, Midland, TX 79705

4. Well Location

Unit Letter E : 2310 Feet From The north Line and 660 Feet From The west Line

Section 35 Township 16S Range 37E NMPM Lea County

10. Proposed Depth

11,900

11. Formation

Strawn

12. Rotary or C.T.

Rotary

13. Elevations (Show whether DF, RT, GR, etc.)

3768.6 ground

14. Kind & Status Plug Bond

Blanket

15. Drilling Contractor

none yet

16. Approx. Date Work will start

7-1-90

17.

PROPOSED CASING AND CEMENT PROGRAM

SIZE OF HOLE	SIZE OF CASING	WEIGHT PER FOOT	SETTING DEPTH	SACKS OF CEMENT	EST. TOP
17-1/2"	13-3/8"	48#	500	395	circ.
11"	8-5/8"	32#	4,750	1,768	circ.
7-7/8"	5-1/2"	17#	11,900	2,379	circ.

We propose to drill a straight hole to a TD of 11,900' and complete as a Strawn oil well. A proposed well plan outline, cementing program, C-102, and BOP configuration are attached.

IN ABOVE SPACE DESCRIBE PROPOSED PROGRAM: IF PROPOSAL IS TO DEEPEN OR PLUG BACK, GIVE DATA ON PRESENT PRODUCTIVE ZONE AND PROPOSED NEW PRODUCTIVE ZONE. GIVE BLOWOUT PREVENTER PROGRAM, IF ANY.

I hereby certify that the information above is true and complete to the best of my knowledge and belief.

SIGNATURE Jerry W. Hoover TITLE Regulatory Coordinator DATE 6/14/90

TYPE OR PRINT NAME Jerry W. Hoover TELEPHONE NO. (915) 686-6548

(This space for State Use)

ORIGINAL SIGNED BY JERRY SECTION

DISTRICT 1 SUPERVISOR

JUN 27 1990

APPROVED BY DISTRICT 1 SUPERVISOR TITLE \_\_\_\_\_ DATE \_\_\_\_\_

CONDITIONS OF APPROVAL, IF ANY:

Permit Expires 6 Months From Approval  
Date Unless Drilling Underway.

7-9180 mfl

RECEIVED

JUN 18 1990

OCD  
HOBBS CIVIL

Submit to Appropriate  
District Office  
State Lease - 4 copies  
Fee Lease - 3 copies

State of New Mexico  
Energy, Minerals and Natural Resources Department

Form C-102  
Revised 1-1-89

OIL CONSERVATION DIVISION

P.O. Box 2088  
Santa Fe, New Mexico 87504-2088

DISTRICT I  
P.O. Box 1980, Hobbs, NM 88240

DISTRICT II  
P.O. Drawer DD, Artesia, NM 88210

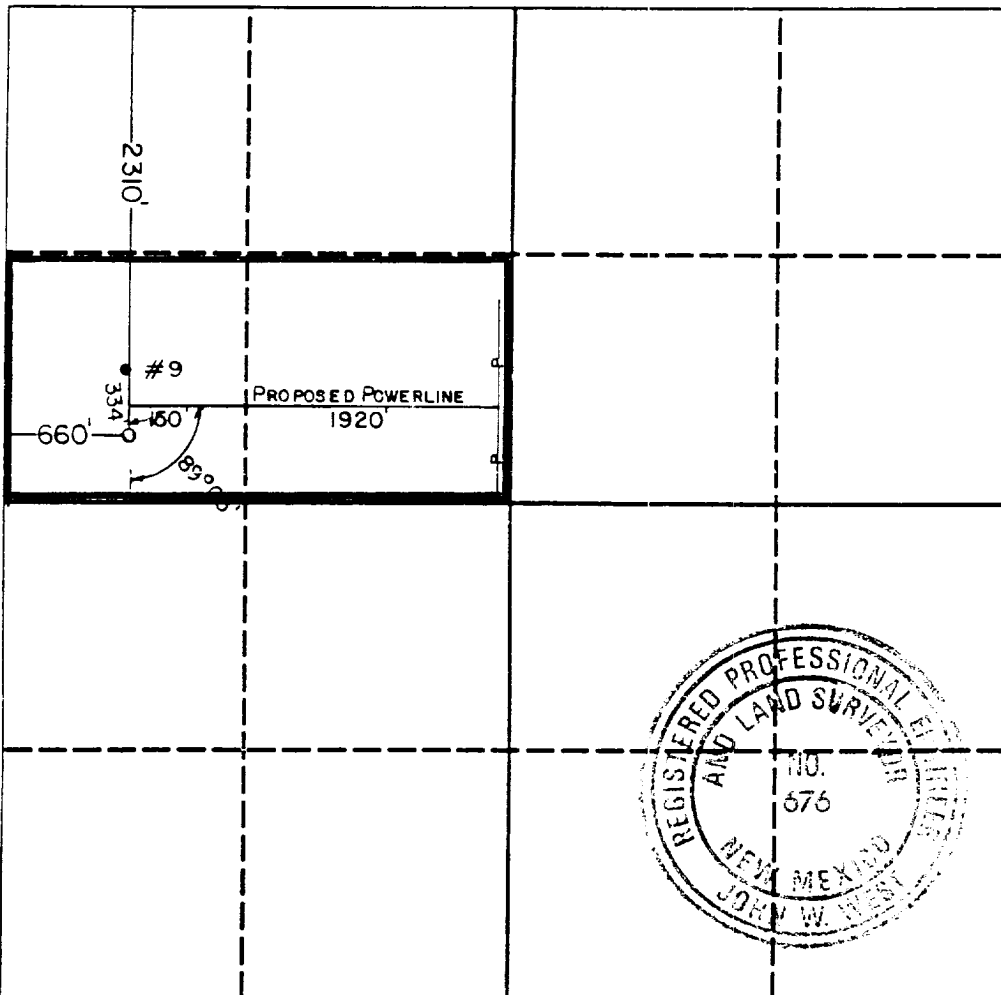
DISTRICT III  
1000 Rio Brazos Rd., Aztec, NM 87410

WELL LOCATION AND ACREAGE DEDICATION PLAT

All Distances must be from the outer boundaries of the section

Operator CONOCO, INC.			Lease West Knowles		Well No. 12
Unit Letter E	Section 35	Township 16 South	Range 37 East	County NMPLM Lea	
Actual Footage Location of Well: 2310 feet from the North line and 660 feet from the West line					
Ground level Elev. 3768.6		Producing Formation Strawn		Pool Shipp Strawn	
				Dedicated Acreage: 80 Acres	

1. Outline the acreage dedicated to the subject well by colored pencil or hatchure marks on the plat below.
2. If more than one lease is dedicated to the well, outline each and identify the ownership thereof (both as to working interest and royalty).
3. If more than one lease of different ownership is dedicated to the well, have the interest of all owners been consolidated by communitization, unitization, force-pooling, etc.?  
☐ Yes ☐ No If answer is "yes" type of consolidation \_\_\_\_\_  
If answer is "no" list the owners and tract descriptions which have actually been consolidated. (Use reverse side of this form if necessary.) \_\_\_\_\_  
No allowable will be assigned to the well until all interests have been consolidated (by communitization, unitization, forced-pooling, or otherwise) or until a non-standard unit, eliminating such interest, has been approved by the Division.



OPERATOR CERTIFICATION

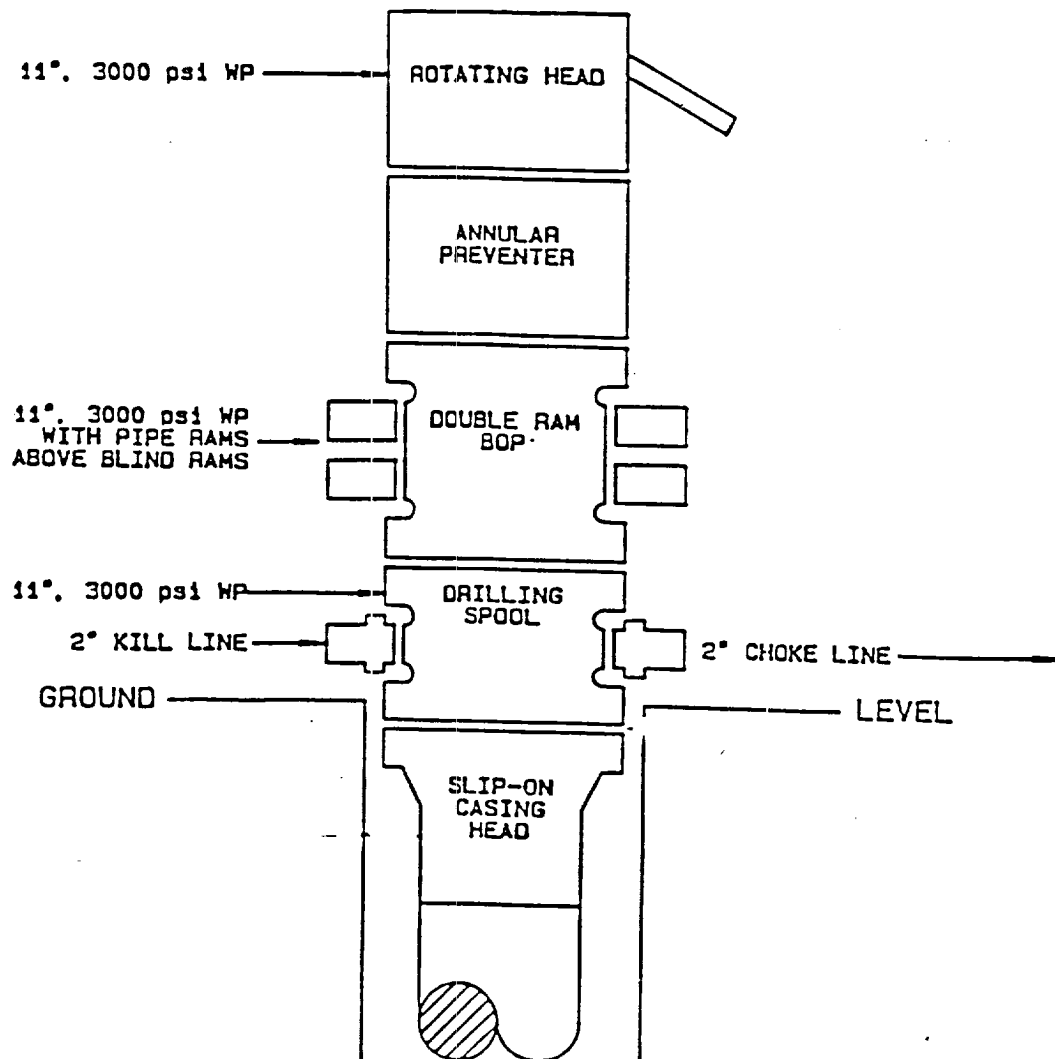
I hereby certify that the information contained herein is true and complete to the best of my knowledge and belief.

Signature  
Jerry W. Hoover  
Printed Name  
Regulatory Coordinator  
Position  
Conoco Inc.  
Company  
6/25/90  
Date

SURVEYOR CERTIFICATION

I hereby certify that the well location shown on this plat was plotted from field notes of actual surveys made by me or under my supervision, and that the same is true and correct to the best of my knowledge and belief.

Date Surveyed  
March 15, 1990  
Signature & Seal of  
Professional Surveyor  
Certificate No. JOHN W. WEST, 676  
RONALD J. EIDSON, 3239



16-58224  
17

RECEIVED  
JUN 18 1990  
OCD  
HOBBS OFFICE