

UNITED STATES
DEPARTMENT OF THE INTERIOR
BUREAU OF LAND MANAGEMENT

APPLICATION FOR PERMIT TO DRILL, DEEPEN, OR PLUG BACK

1a. TYPE OF WORK DRILL <input checked="" type="checkbox"/> DEEPEN <input type="checkbox"/> PLUG BACK <input type="checkbox"/>		5. LEASE DESIGNATION AND SERIAL NO. LC-058514 (X)
b. TYPE OF WELL OIL WELL <input checked="" type="checkbox"/> GAS WELL <input type="checkbox"/> OTHER <input type="checkbox"/>		6. IF INDIAN, ALLOTTEE OR TRIBE NAME
2. NAME OF OPERATOR Marbob EEnergy Corporation		7. UNIT AGREEMENT NAME
3. ADDRESS OF OPERATOR P.O. Drawer 217, Artesia, NM 88210		8. FARM OR LEASE NAME Pearsall BX
4. LOCATION OF WELL (Report location clearly and in accordance with any State requirements.)* At surface 1650 FNL 2310 FEL At proposed prod. zone same		9. WELL NO. 5
14. DISTANCE IN MILES AND DIRECTION FROM NEAREST TOWN OR POST OFFICE* Approximately 40.5 air miles east of Artesia, NM		10. FIELD AND POOL, OR WILDCAT Maljamar Grbg SA
15. DISTANCE FROM PROPOSED* LOCATION TO NEAREST PROPERTY OR LEASE LINE, FT. (Also to nearest drlg. unit line, if any) 1650'		11. SEC., T., R., M., OR BLK. AND SURVEY OR AREA Sec. 34-T17S-R32E
16. NO. OF ACRES IN LEASE 160		12. COUNTY OR PARISH Lea
17. NO. OF ACRES ASSIGNED TO THIS WELL 40		13. STATE NM
18. DISTANCE FROM PROPOSED LOCATION* TO NEAREST WELL, DRILLING, COMPLETED, OR APPLIED FOR, ON THIS LEASE, FT. 4500'		20. ROTARY OR CABLE TOOLS Rotary
21. ELEVATIONS (Show whether DF, RT, GR, etc.) 3947.6' GR		22. APPROX. DATE WORK WILL START* 12/26/90

PROPOSED CASING AND CEMENTING PROGRAM

HOLE SIZE	CASING SIZE	WEIGHT/FOOT	GRADE	THREAD TYPE	SETTING DEPTH	QUANTITY OF CEMENT
12 1/4"	8 5/8"	24#	J-55	LTC	1200'	to circulate
7 7/8"	5 1/2"	17#	J-55	LTC	4500'	Sufficiently
					attempt	to circulate

Pay zone will be selectively perforated and stimulated as needed for optimum production.

Attached are: 1. Location & acreage dedication plat
2. Supplemental drilling data
3. Surface Use Plan

NOTE: On production string, a fluid caliber will be run, will figure cement w/25% excess, attempt to circulate.

IN ABOVE SPACE DESCRIBE PROPOSED PROGRAM: If proposal is to deepen or plug back, give data on present productive zone and proposed new productive zone. If proposal is to drill or deepen directionally, give pertinent data on subsurface locations and measured and true vertical depths. Give blowout preventer program, if any.

24. SIGNED Thonda Nelson TITLE Production Clerk DATE 10/18/90

(This space for Federal or State office use)

PERMIT NO. _____ APPROVAL DATE _____
APPROVED BY David Strat TITLE MANAGER DATE 11-5-90
APPROVED BY _____ TITLE MANAGER DATE _____

APPROVAL SUBJECT TO
GENERAL REQUIREMENTS AND
SPECIAL STIPULATIONS

*See Instructions On Reverse Side

ATTACHED
Title 18 U.S.C. Section 1001, makes it a crime for any person knowingly and willfully to make to any department or agency of the United States any false statement.

RECEIVED
OCT 24 10 20 AM '90
CITY OF ALBUQUERQUE

1011-10

NOV 06 1990

CCO

NOISE OFFICE

OIL CONSERVATION DIVISION

P.O. Box 2088

Santa Fe, New Mexico 87504-2088

DISTRICT I

P.O. Box 1980, Hobbs, NM 88240

DISTRICT II

P.O. Drawer DD, Artesia, NM 88210

DISTRICT III

1000 Rio Brazos Rd., Aztec, NM 87410

WELL LOCATION AND ACREAGE DEDICATION PLAT

All Distances must be from the outer boundaries of the section

Operator MARBOB ENERGY CORP.			Lease Pearsall B X Federal		Well No. 5
Unit Letter G	Section 34	Township 17 South	Range 32 East	County Lea	
Actual Footage Location of Well: 1650 feet from the North line and 2310 feet from the East line					
Ground level Elev. 3947.6	Producing Formation San Andres	Pool Maljamar Grbg SA		Dedicated Acreage: 40 Acres	

1. Outline the acreage dedicated to the subject well by colored pencil or hatchure marks on the plat below.

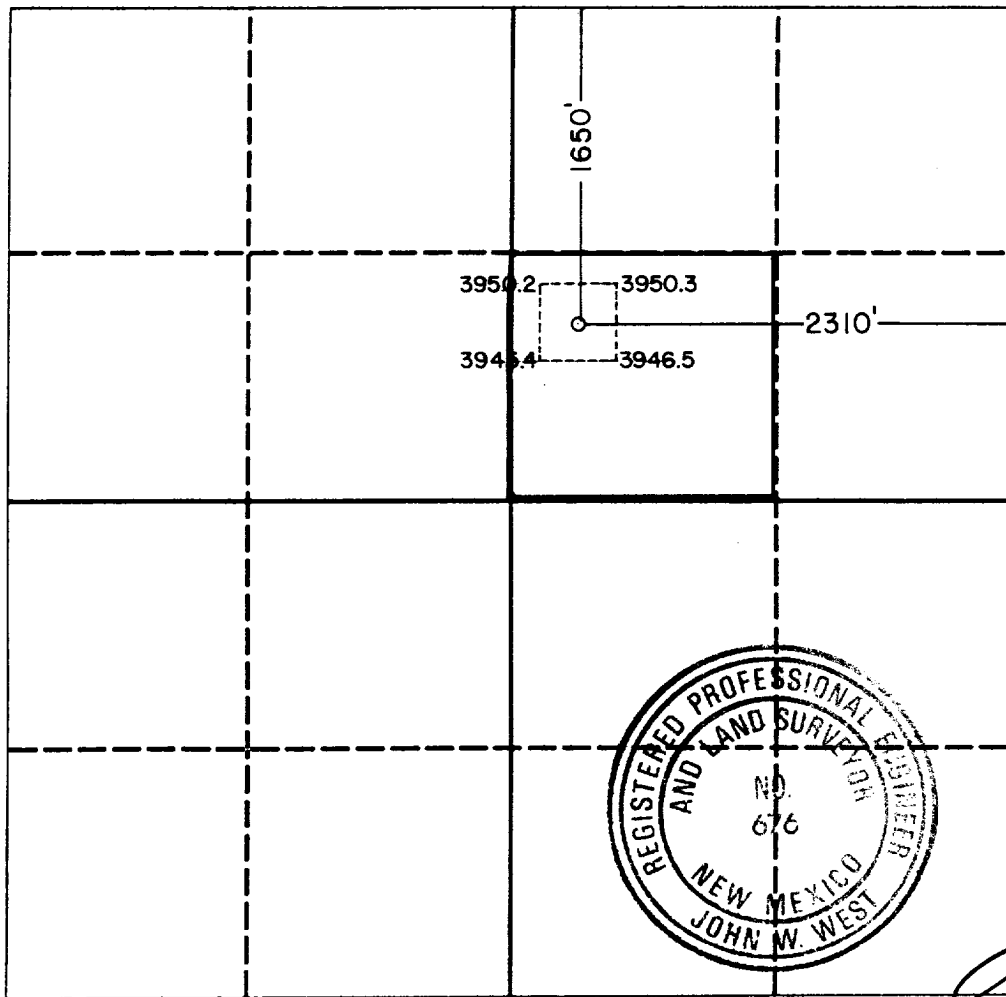
2. If more than one lease is dedicated to the well, outline each and identify the ownership thereof (both as to working interest and royalty).

3. If more than one lease of different ownership is dedicated to the well, have the interest of all owners been consolidated by communitization, unitization, force-pooling, etc.?

☐ Yes ☐ No If answer is "yes" type of consolidation _____

If answer is "no" list the owners and tract descriptions which have actually been consolidated. (Use reverse side of this form if necessary.) _____

No allowable will be assigned to the well until all interests have been consolidated (by communitization, unitization, forced-pooling, or otherwise) or until a non-standard unit, eliminating such interest, has been approved by the Division.



OPERATOR CERTIFICATION

I hereby certify that the information contained herein is true and complete to the best of my knowledge and belief.

Signature
Rhonda Nelson

Printed Name
Rhonda Nelson

Position
Production Clerk

Company
Marbob Energy Corporation

Date
October 18, 1990

SURVEYOR CERTIFICATION

I hereby certify that the well location shown on this plat was plotted from field notes of actual surveys made by me or under my supervision, and that the same is true and correct to the best of my knowledge and belief.

Date Surveyed
October 2, 1990

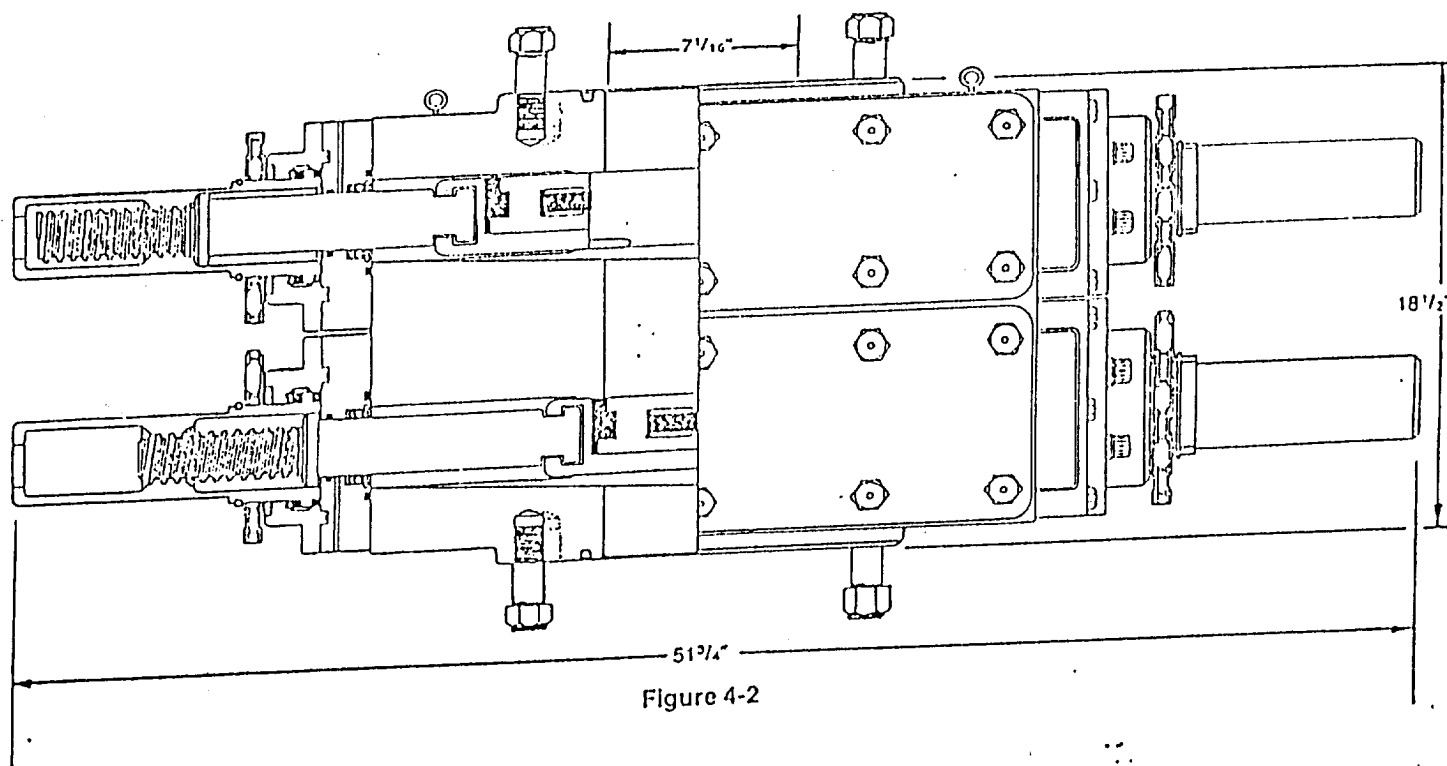
Signature & Seal of
Professional Surveyor

Certificate No. JOHN W. WEST, 676
RONALD J. EIDSON, 3239

RECEIVED

NOV 06 1990

GOV
HOBBS OFFICE



DIMENSIONS AND WEIGHTS

		Manual
Weight	Single (pounds)	1,272
	Double (pounds)	2,335
Overall height, less studs	Single (inches)	10
	Double (inches)	18 1/2
Overall length (inches)		51 3/4
Overall width, less handwheel (inches)		20 1/4
Opening through preventer (inches)		7 1/16
Working pressure (psi)		3,000
Test pressure (psi)		6,000
Handwheel diameter (inches)		20
Ring joint gasket API number		R-45

SUP Exhibit "E"

MARBOB ENERGY CORPORATION
PEARSALL BX NO.5
SW/4NE/4, Section 34,
T-17S, R-32E,
Lea County, New Mexico

12-11-91
ELF

RECEIVED

NOV 06 1990

ROOM
HODAS OFFICE