

Submit to Appropriate
District Office
State Lease - 6 copies
Fee Lease - 3 copies

State of New Mexico
Energy, Minerals and Natural Resources Department

Form C-101
Revised 1-1-89

OIL CONSERVATION DIVISION

P.O. Box 2088
Santa Fe, New Mexico 87504-2088

DISTRICT I
P.O. Box 1980, Hobbs, NM 88240

DISTRICT II
P.O. Drawer DD, Artesia, NM 88210

DISTRICT III
1000 Rio Brazos Rd., Aztec, NM 87410

API NO. (assigned by OCD on New Wells)

30-025-31066

5. Indicate Type of Lease

STATE ☒

FEE ☐

6. State Oil & Gas Lease No.

B2894

APPLICATION FOR PERMIT TO DRILL, DEEPEN, OR PLUG BACK

1a. Type of Work:

DRILL ☒

RE-ENTER ☐

DEEPEN ☐

PLUG BACK ☐

b. Type of Well:

OIL

WELL ☒

GAS

WELL ☐

OTHER ☐

SINGLE

ZONE ☐

MULTIPLE

ZONE ☐

7. Lease Name or Unit Agreement Name

Lovington Paddock Unit

2. Name of Operator

Greenhill Petroleum Corp.

8. Well No.

86

3. Address of Operator

16010 Barkers Point, Ste., 325, Houston, TX 77079

9. Pool name or Wildcat

Lovington Paddock

4. Well Location

Unit Letter G : 1595 Feet From The North Line and 2485 Feet From The East Line

Section 36

Township 16 South

Range 36 East

NMPM

Lea

County

10. Proposed Depth

6350'

11. Formation

Lovington Paddock

12. Rotary or C.T.

Rotary

13. Elevations (Show whether DF, RT, GR, etc.)

3843.3 GR

14. Kind & Status Plug. Bond

Blanket

15. Drilling Contractor

TBD

16. Approx. Date Work will start

12-15-90

17.

PROPOSED CASING AND CEMENT PROGRAM

SIZE OF HOLE	SIZE OF CASING	WEIGHT PER FOOT	SETTING DEPTH	SACKS OF CEMENT	EST. TOP
12 1/4	8 5/8	24#	2050	800	Surface
7 7/8	5 1/2	15.5#	6350	500	3000

IN ABOVE SPACE DESCRIBE PROPOSED PROGRAM: IF PROPOSAL IS TO DEEPEN OR PLUG BACK, GIVE DATA ON PRESENT PRODUCTIVE ZONE AND PROPOSED NEW PRODUCTIVE ZONE. GIVE BLOWOUT PREVENTER PROGRAM, IF ANY.

I hereby certify that the information above is true and complete to the best of my knowledge and belief.

SIGNATURE

Mike Newport

TITLE

Landman

DATE 11-9-90

TYPE OR PRINT NAME

Mike Newport

TELEPHONE NO.

955-1146

(This space for State Use)

APPROVED BY

TITLE

DATE

CONDITIONS OF APPROVAL, IF ANY:

722-2909

Approved by _____
Date 11-9-90

GREENHILL PETROLEUM CORPORATION
BOP PROGRAM FOR
LOVINGTON PADDOCK WELL # 86

<u>Casing Program</u>				<u>BOP Program</u>	
Size	Depth	Wt	Grade	Configuration	Test Pressure
8 5/8"	2050'	24	H40, STC	RA	200 psi
5 1/2"	6350'	15.5	K55, STC	RR	250/1500 psi

* RR - Ram Ram

RA - Ram Annular

Diverter - Hydrill may be substituted for a diverter

Submit to Appropriate
District Office
State Lease - 4 copies
Fee Lease - 3 copies

State of New Mexico
Energy, Minerals and Natural Resources Department

Form C-102
Revised 1-1-88

OIL CONSERVATION DIVISION

DISTRICT I
P.O. Box 1980, Hobbs, NM 88240

P.O. Box 2088
Santa Fe, New Mexico 87504-2088

DISTRICT II
P.O. Drawer DD, Artesia, NM 88210

DISTRICT III
1000 Rio Buenos Rd., Aztec, NM 87410

WELL LOCATION AND ACREAGE DEDICATION PLAT

All Distances must be from the outer boundaries of the section

Operator GREENHILL PETROLEUM CORP.			Lease LOVINGTON PADDOCK UNIT		Well No. 86
Unit Letter G	Section 36	Township 16 SOUTH	Range 36 EAST	County NM/LEA	LEA
Actual Footage Location of Well: 1595 feet from the NORTH line and 2485 feet from the EAST line					
Ground level Elev. 3843.3	Producing Formation Lovington Paddock		Pool Lovington Paddock		Dedicated Acreage: 40 Acres

1. Outline the acreage dedicated to the subject well by colored pencil or hatchure marks on the plat below.
2. If more than one lease is dedicated to the well, outline each and identify the ownership thereof (both as to working interest and royalty).
3. If more than one lease of different ownership is dedicated to the well, have the interest of all owners been consolidated by communitization, unitization, force-pooling, etc.?

☒ Yes ☐ No If answer is "yes" type of consolidation unitized

If answer is "no" list the owners and tract descriptions which have actually been consolidated. (Use reverse side of this form if necessary.)

No allowable will be assigned to the well until all interests have been consolidated (by communitization, unitization, forced-pooling, or otherwise) or until a non-standard unit, eliminating such interest, has been approved by the Division.

OPERATOR CERTIFICATION

I hereby certify that the information contained herein is true and complete to the best of my knowledge and belief.

Signature
Michael J. Newport
Printed Name
Michael J. Newport
Position
Landman
Company
Greenhill Petroleum
Date
11-9-90

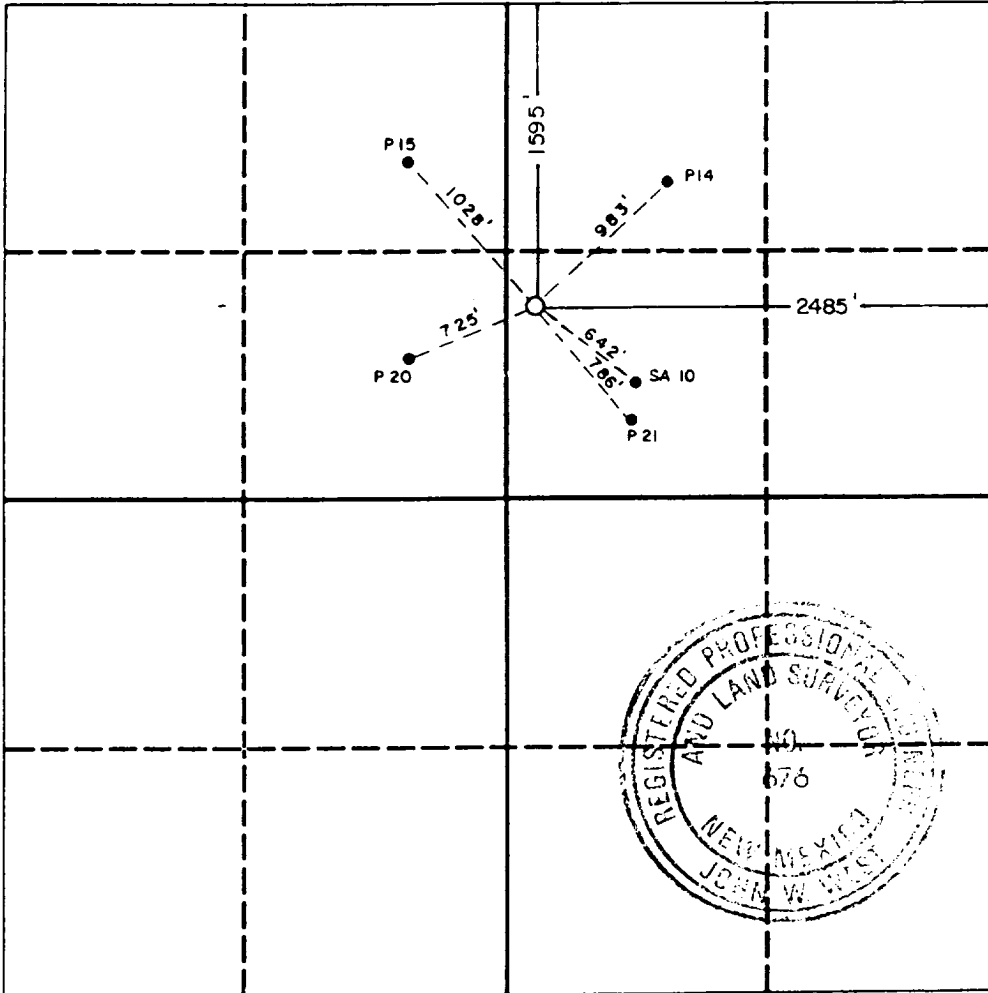
SURVEYOR CERTIFICATION

I hereby certify that the well location shown on this plat was plotted from field notes of actual surveys made by me or under my supervision, and that the same is true and correct to the best of my knowledge and belief.

Date Surveyed
11-1-90

Signature & Seal of
Professional Surveyor

John W. West
Certificate No. JOHN W. WEST, 676
RONALD J. EIDSON, 3239



10/2/90

AT

RECEIVED

NOV 15 1990

HOLDS COMPANY