

Submit to Appropriate
District Office
State Lease - 6 copies
Fee Lease - 5 copies

State of New Mexico
Energy, Minerals and Natural Resources Department

Form C-101
Revised 1-1-89

OIL CONSERVATION DIVISION

DISTRICT I
P.O. Box 1980, Hobbs, NM 88240

P.O. Box 2088

Santa Fe, New Mexico 87504-2088

DISTRICT II
P.O. Drawer DD, Artesia, NM 88210

DISTRICT III
1000 Rio Brazos Rd., Aztec, NM 87410

API NO. (assigned by OCD on New Wells)

30-025-31067

5. Indicate Type of Lease

STATE ☒

FEE ☐

6. State Oil & Gas Lease No.

B 7766-2 B7765-5

APPLICATION FOR PERMIT TO DRILL, DEEPEN, OR PLUG BACK

1a. Type of Work:

DRILL ☒

RE-ENTER ☐

DEEPEN ☐

PLUG BACK ☐

b. Type of Well:

OIL
WELL ☒

GAS
WELL ☐

OTHER ☐

SINGLE
ZONE ☐

MULTIPLE
ZONE ☐

7. Lease Name or Unit Agreement Name

Lovington Paddock Unit

2. Name of Operator

Greenhill Petroleum Corp

8. Well No.

90

3. Address of Operator

16010 Barkers Point, Ste., 325, Houston, TX 77079

9. Pool name or Wildcat

Lovington Paddock

4. Well Location

Unit Letter K : 1355 Feet From The West Line and 2535 Feet From The South Line

Section 36

Township 16 South

Range 36 East

NMPM 1ea

County

10. Proposed Depth

6350

11. Formation

Lovington Paddock Rotary

12. Rotary or C.T.

13. Elevations (Show whether DF, RT, GR, etc.)

3836.4 GR

14. Kind & Status Plug. Bond

Blanket

15. Drilling Contractor

TDB

16. Approx. Date Work will start

12-15-90

17.

PROPOSED CASING AND CEMENT PROGRAM

SIZE OF HOLE	SIZE OF CASING	WEIGHT PER FOOT	SETTING DEPTH	SACKS OF CEMENT	EST. TOP
12 1/4	8 5/8	24#	2050	800	Surface
7 7/8	5 1/2	15.5#	6350	500	3000

IN ABOVE SPACE DESCRIBE PROPOSED PROGRAM: IF PROPOSAL IS TO DEEPEN OR PLUG BACK, GIVE DATA ON PRESENT PRODUCTIVE ZONE AND PROPOSED NEW PRODUCTIVE ZONE. GIVE BLOWOUT PREVENTER PROGRAM, IF ANY.

I hereby certify that the information above is true and complete to the best of my knowledge and belief.

SIGNATURE

Mike Newport

TITLE

Landman

DATE 11-9-90

TYPE OR PRINT NAME

Mike Newport

TELEPHONE NO. 955-1146

(This space for State Use)

APPROVED BY

TITLE

DATE

CONDITIONS OF APPROVAL, IF ANY:

7742-2964

Permit Expires 6 Months From Approval.
Does Not Allow Drilling or Leasing

GREENHILL PETROLEUM CORPORATION
BOP PROGRAM FOR
LOVINGTON PADDOCK WELL # 90

Casing Program

BOP Program

Size	Depth	Wt	Grade	Configuration	Test Pressure
8 5/8"	2050'	24	H40, STC	RA	200 psi
5 1/2"	6350'	15.5	K55, STC	RR	250/1500 psi

* RR - Ram Ram

RA - Ram Annular

Diverter - Hydrill may be substituted for a diverter

Submit to Appropriate
District Office
State Lease - 4 copies
Fee Lease - 3 copies

State of New Mexico
Energy, Minerals and Natural Resources Department

Form C-102
Revised 1-1-89

OIL CONSERVATION DIVISION

P.O. Box 2088
Santa Fe, New Mexico 87504-2088

DISTRICT I
P.O. Box 1980, Hobbs, NM 88240

DISTRICT II
P.O. Drawer DD, Artesia, NM 88210

DISTRICT III
1000 Rio Rancho Rd., Aztec, NM 87410

WELL LOCATION AND ACREAGE DEDICATION PLAT

All Distances measured from the outer boundaries of the section

Operator GREENHILL PETROLEUM CORP.			Lease LOVINGTON PADDOCK UNIT		Well No. 90
Unit Letter K	Section 36	Township 16 SOUTH	Range 36 EAST	County LEA	
Actual Footage Location of Well: 1355 feet from the WEST line and 2535 feet from the SOUTH line					
Ground level Elev. 3836.4	Producing Formation Lovington Paddock		Pool Lovington Paddock		Dedicated Acreage: 4.0 Acres

- Outline the acreage dedicated to the subject well by colored pencil or hatchure marks on the plat below.
- If more than one lease is dedicated to the well, outline each and identify the ownership thereof (both as to working interest and royalty).
- If more than one lease of different ownership is dedicated to the well, have the interest of all owners been consolidated by communitization, unitization, force-pooling, etc.?
☐ Yes ☐ No If answer is "yes" type of consolidation _____
If answer is "no" list the owners and tract descriptions which were actually been consolidated. (Use reverse side of this form if necessary).
No allowable will be assigned to the well until all interests have been consolidated (by communitization, unitization, forced-pooling, or otherwise) or until a non-standard unit, eliminating such interest, has been approved by the Division.

OPERATOR CERTIFICATION

I hereby certify that the information contained herein is true and complete to the best of my knowledge and belief.

Signature

Michael J. Newport

Printed Name

Michael J. Newport

Position

Landman

Company

Greenhill Petroleum

Date

11-9-90

SURVEYOR CERTIFICATION

I hereby certify that the well location shown on this plat was plotted from field notes of actual surveys made by me or under my supervision, and that the same is true and correct to the best of my knowledge and belief.

Date Surveyed

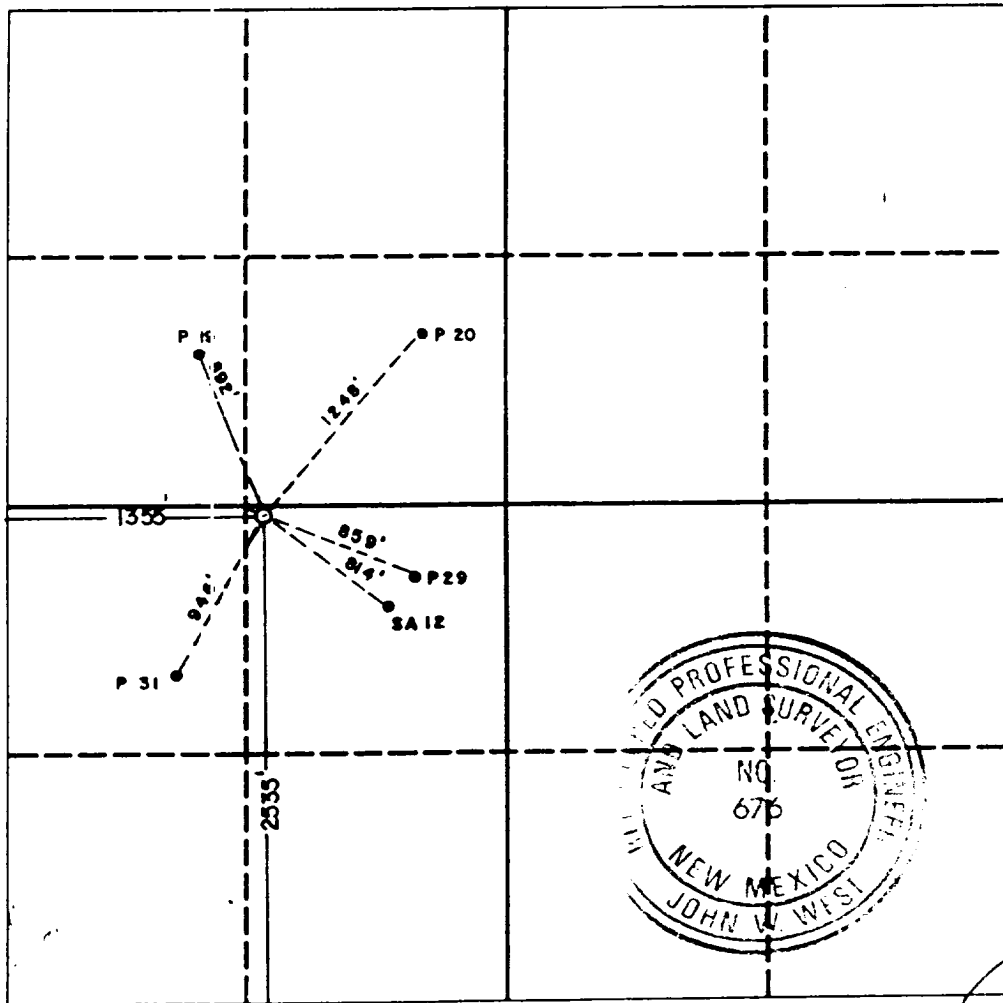
11-1-90

Signature & Seal of
Professional Surveyor

Ronald J. Eidson

Certificate No. JOHN W. WEST, 676

RONALD J. EIDSON, 3239



473

NOV 15 1990

HOLES OFFICE