

Submit to Appropriate
District Office
State Lease - 6 copies
Fee Lease - 5 copies

State of New Mexico
Energy, Minerals and Natural Resources Department

Form C-101
Revised 1-1-89

OIL CONSERVATION DIVISION

P.O. Box 2088

Santa Fe, New Mexico 87504-2088

DISTRICT I
P.O. Box 1980, Hobbs, NM 88240

DISTRICT II
P.O. Drawer DD, Artesia, NM 88210

DISTRICT III
1000 Rio Brazos Rd., Aztec, NM 87410

API NO. (assigned by OCD on New Wells)

30-025-31110

5. Indicate Type of Lease

STATE ☒

FEE ☐

6. State Oil & Gas Lease No.

V-1682

7. Lease Name or Unit Agreement Name

Red Hat State Unit

8. Well No.

1

9. Pool name or Wildcat
Wildcat

APPLICATION FOR PERMIT TO DRILL, DEEPEN, OR PLUG BACK

1a. Type of Work:

DRILL ☒

RE-ENTER ☐

DEEPEN ☐

PLUG BACK ☐

b. Type of Well:

OIL
WELL ☐

GAS
WELL ☒

OTHER

SINGLE
ZONE ☐

MULTIPLE
ZONE ☐

2. Name of Operator

Yates Petroleum Corporation

3. Address of Operator

105 South Fourth Street, Artesia, NM 88210

4. Well Location

Unit Letter

Not
N6

: 3300

Feet From The

South

Line and

1980

Feet From The

East

Line

Section

2

Township

16 South

Range

33 East

NMPM

Lea

County

10. Proposed Depth

13,500'

11. Formation

Mississippian

12. Rotary or C.T.

Rotary

13. Elevations (Show whether DF, RT, GR, etc.)

4192' GR

14. Kind & Status Plug. Bond

Blanket

15. Drilling Contractor

Undesignated

16. Approx. Date Work will start

ASAP

PROPOSED CASING AND CEMENT PROGRAM

SIZE OF HOLE	SIZE OF CASING	WEIGHT PER FOOT	SETTING DEPTH	SACKS OF CEMENT	EST. TOP
17 3/4"	13 3/8"	48#	350'	675 sacks	Circulate
12 1/4"	8 5/8"	32#	4450'	2000 sacks	Circulate
7 7/8"	5 1/2"	17# & 20#	TD	1500 sacks	

We propose to drill and test the Mississippian and intermediate formations. Approximately 350' of surface casing will be set and cement circulated to shut off gravel and cavings. Intermediate casing will be set at approximately 4450' and cement circulated. If commercial, production casing will be run and cemented with adequate cover, perforated, and stimulated as needed for production.

MUD PROGRAM: Native mud to 350'; FW/cut Brine to 4450'; SW Gel/Starch to TD.

BOP PROGRAM: BOP's will be installed at the offset and tested daily for operational.

IN ABOVE SPACE DESCRIBE PROPOSED PROGRAM: IF PROPOSAL IS TO DEEPEN OR PLUG BACK, GIVE DATA ON PRESENT PRODUCTIVE ZONE AND PROPOSED NEW PRODUCTIVE ZONE. GIVE BLOWOUT PREVENTER PROGRAM, IF ANY.

I hereby certify that the information above is true and complete to the best of my knowledge and belief.

SIGNATURE

Clifton R. May

TITLE

Permit Agent

DATE

12-19-90

TYPE OR PRINT NAME

Clifton R. May

TELEPHONE NO.

748-1471

(This space for State Use)

APPROVED BY

TITLE

DATE

CONDITIONS OF APPROVAL, IF ANY:

DEC 20 1990

Submit to Appropriate
District Office
State Lease - 4 copies
Fee Lease - 3 copies

State of New Mexico
Energy, Minerals and Natural Resources Department.

Form C-102
Revised 1-1-89

OIL CONSERVATION DIVISION

P.O. Box 2088
Santa Fe, New Mexico 87504-2088

DISTRICT I
P.O. Box 1980, Hobbs, NM 88240

DISTRICT II
P.O. Drawer DD, Artesia, NM 88210

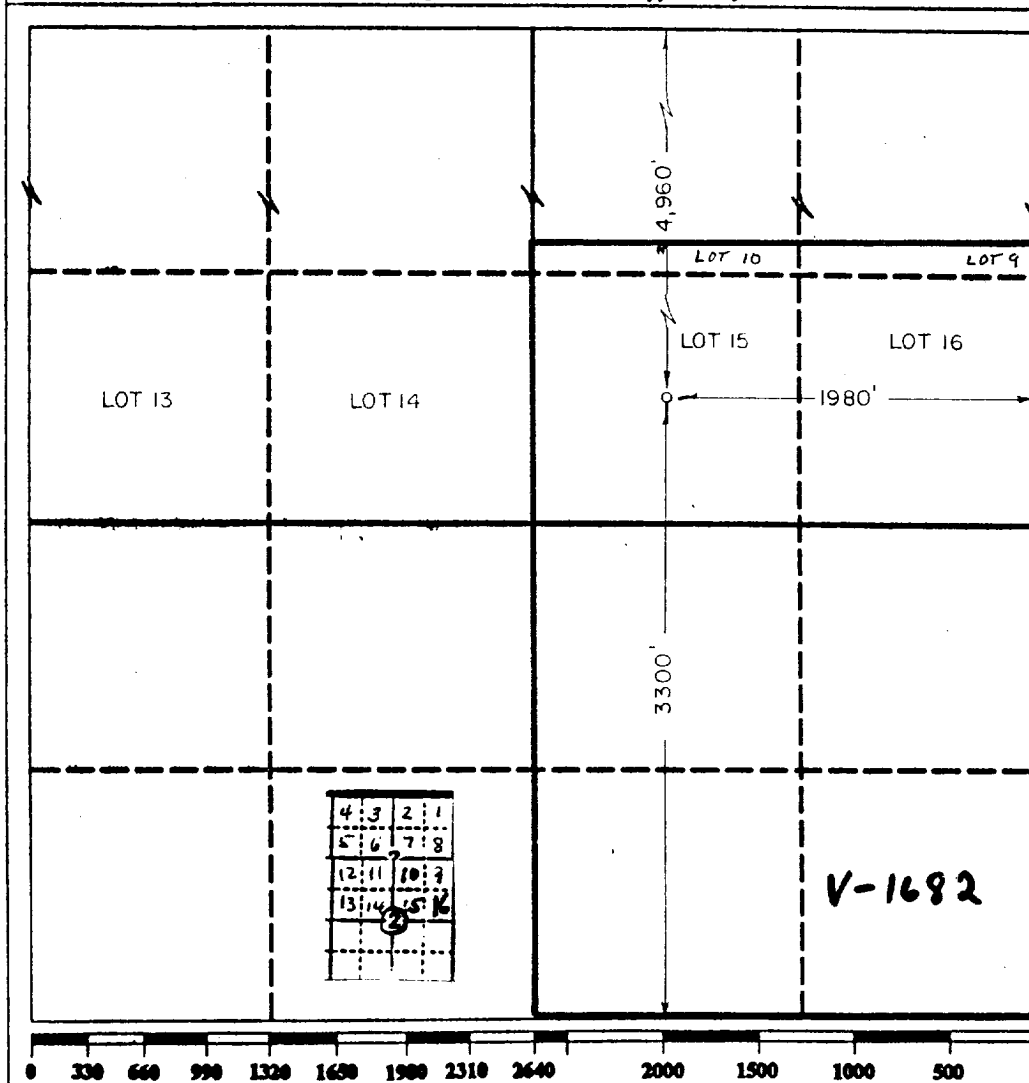
DISTRICT III
1000 Rio Buenos Rd., Aztec, NM 87410

WELL LOCATION AND ACREAGE DEDICATION PLAT

All Distances must be from the outer boundaries of the section

Operator YATES PETROLEUM CORPORATION			Lease RED HAT STATE UNIT		Well No. 1
Unit Letter LOT-15	Section 2	Township 16 SOUTH	Range 33 EAST	County NMNM	LEA
Actual Footage Location of Well: 3300 feet from the SOUTH line and 1980 feet from the EAST line					
Ground level Elev. 4192	Producing Formation MISSISSIPPIAN		Pool WILDCAT	Dedicated Acreage: 320 Acres	

- Outline the acreage dedicated to the subject well by colored pencil or hatchure marks on the plat below.
- If more than one lease is dedicated to the well, outline each and identify the ownership thereof (both as to working interest and royalty).
- If more than one lease of different ownership is dedicated to the well, have the interest of all owners been consolidated by communitization, unitization, force-pooling, etc.?
☐ Yes ☐ No If answer is "yes" type of consolidation _____
If answer is "no" list the owners and tract descriptions which have actually been consolidated. (Use reverse side of this form if necessary.)
No allowable will be assigned to the well until all interests have been consolidated (by communitization, unitization, forced-pooling, or otherwise) or until a non-standard unit, eliminating such interest, has been approved by the Division.



OPERATOR CERTIFICATION

I hereby certify that the information contained herein is true and complete to the best of my knowledge and belief.

Signature
Clifton R. May
Printed Name
Clifton R. May
Position
Permit Agent
Company
Yates Petroleum Corp.
Date
12-18-90

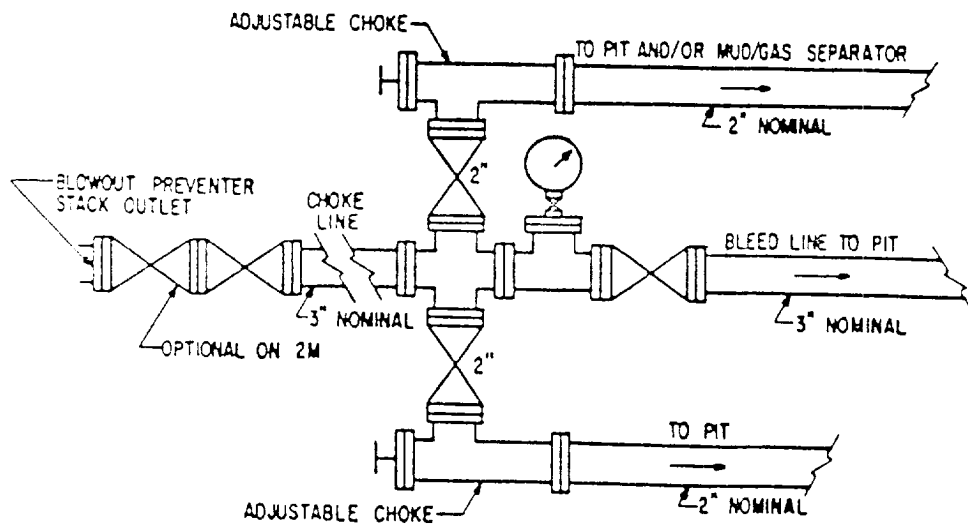
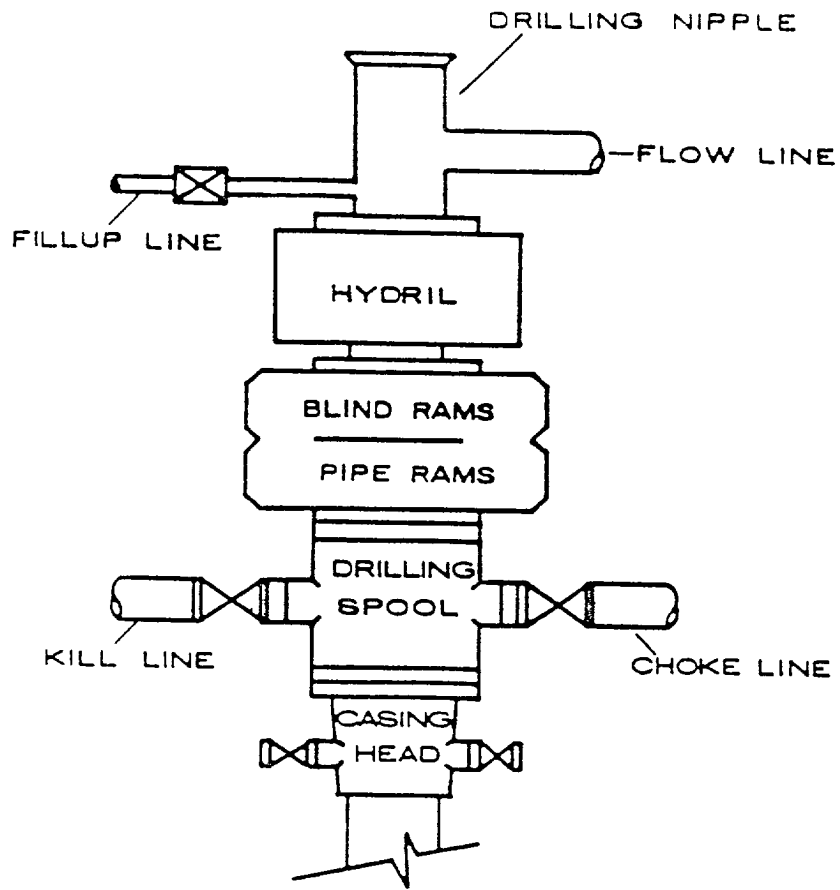
SURVEYOR CERTIFICATION

I hereby certify that the well location shown on this plat was plotted from field notes of actual surveys made by me or under my supervision, and that the same is true and correct to the best of my knowledge and belief.

Date Surveyed
12/14/90
Signature & Seal of
Professional Surveyor
[Signature]
STATE OF NEW MEXICO
HERSCHE
Certification No. 364040
REGISTERED LAND SURVEYOR

See 2nd long section - 10 x 9 blocks 40 or each

BOP STACK



16-02-6 2001
FTE

DEC 1