

Submit to Appropriate  
District Office  
State Lease - 4 copies  
Fee Lease - 3 copies

State of New Mexico  
Energy, Minerals and Natural Resources Department

Form C-102  
Revised 1-1-89

OIL CONSERVATION DIVISION

DISTRICT I  
P.O. Box 1980, Hobbs, NM 88240

DISTRICT II  
P.O. Drawer DD, Artesia, NM 88210

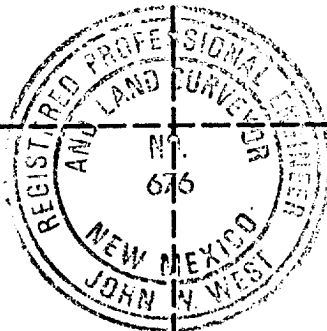
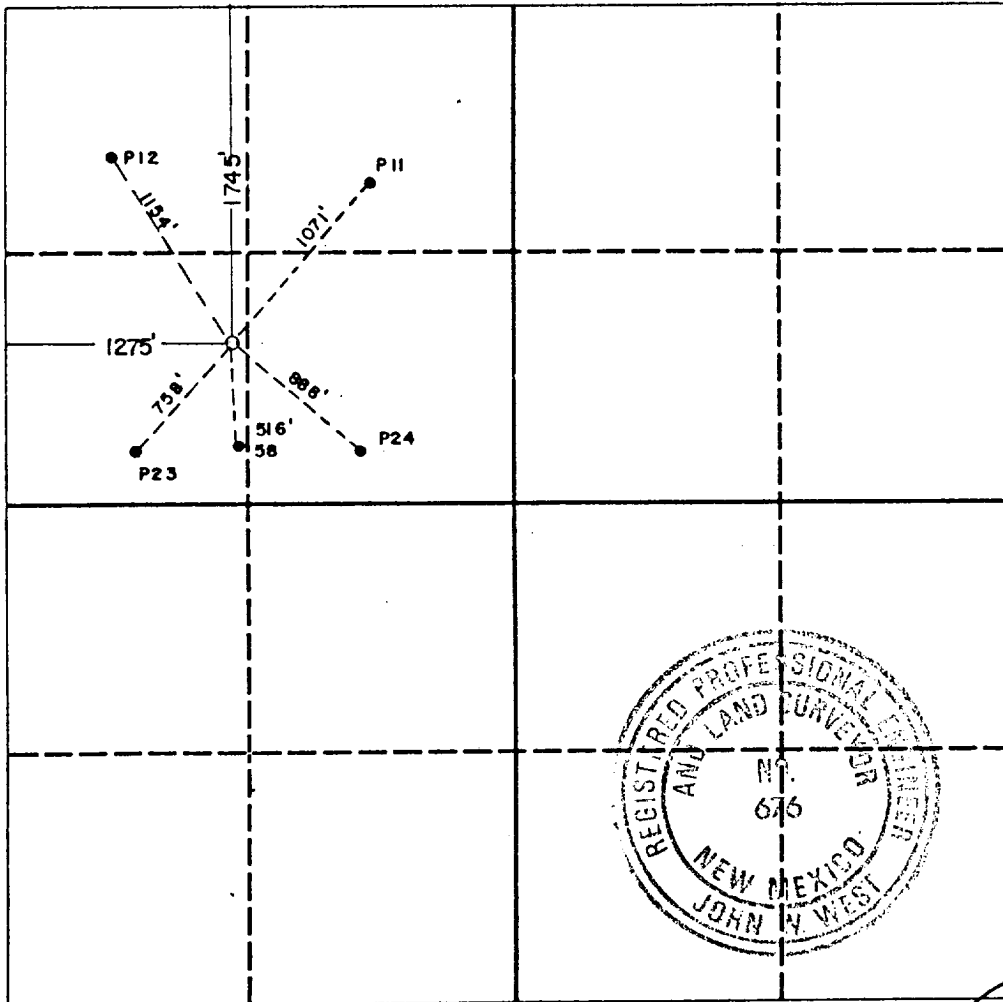
DISTRICT III  
1000 Rio Brazos Rd., Aztec, NM 87410

P.O. Box 2088  
Santa Fe, New Mexico 87504-2088

WELL LOCATION AND ACREAGE DEDICATION PLAT

All Distances must be from the outer boundaries of the section

Operator GREENHILL PETROLEUM CORP.			Lease LOVINGTON PADDOCK UNIT		Well No. 89
Unit Letter E	Section 31	Township 16 SOUTH	Range 37 EAST	County LEA	
Actual Footage Location of Well: 1275 feet from the WEST line and 1745 feet from the NORTH line					
Ground level Elev. 3828.1	Producing Formation Lovington Paddock		Pool Lovington Paddock	Dedicated Acreage: 49.6846 Acres	
<p>1. Outline the acreage dedicated to the subject well by colored pencil or hatchure marks on the plat below.</p> <p>2. If more than one lease is dedicated to the well, outline each and identify the ownership thereof (both as to working interest and royalty).</p> <p>3. If more than one lease of different ownership is dedicated to the well, have the interest of all owners been consolidated by communitization, unitization, force-pooling, etc.? <input checked="" type="checkbox"/> Yes <input type="checkbox"/> No If answer is "yes" type of consolidation <u>Unitized</u></p> <p>If answer is "no" list the owners and tract descriptions which have actually been consolidated. (Use reverse side of this form if necessary.)</p> <p>No allowable will be assigned to the well until all interests have been consolidated (by communitization, unitization, forced-pooling, or otherwise) or until a non-standard unit, eliminating such interest, has been approved by the Division.</p>					



OPERATOR CERTIFICATION

I hereby certify that the information contained herein is true and complete to the best of my knowledge and belief.

Signature  
*Michael J. Newport*  
Printed Name  
Michael J. Newport  
Position  
Landman  
Company  
Greenhill Petroleum  
Date  
12/17/90

SURVEYOR CERTIFICATION

I hereby certify that the well location shown on this plat was plotted from field notes of actual surveys made by me or under my supervision, and that the same is true and correct to the best of my knowledge and belief.

Date Surveyed  
11-1-90  
Signature & Seal of Professional Surveyor  
*John W. West*  
Certificate No. JOHN W. WEST, 676  
RONALD J. EIDSON, 3239

GREENHILL PETROLEUM CORPORATION

BOP SCHEMATIC FOR LOVINGTON PADDOCK UNIT  
WELLS # 88 and 89

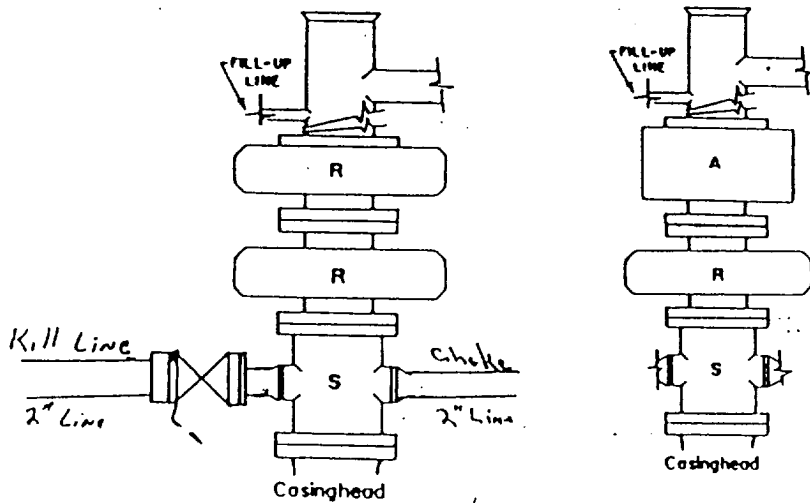


FIGURE K1-1. Recommended GPC Class 2 BOP stack, 2000 psi WP. Either SRd (left) or SA (right) arrangement is acceptable and drilling spool is optional.

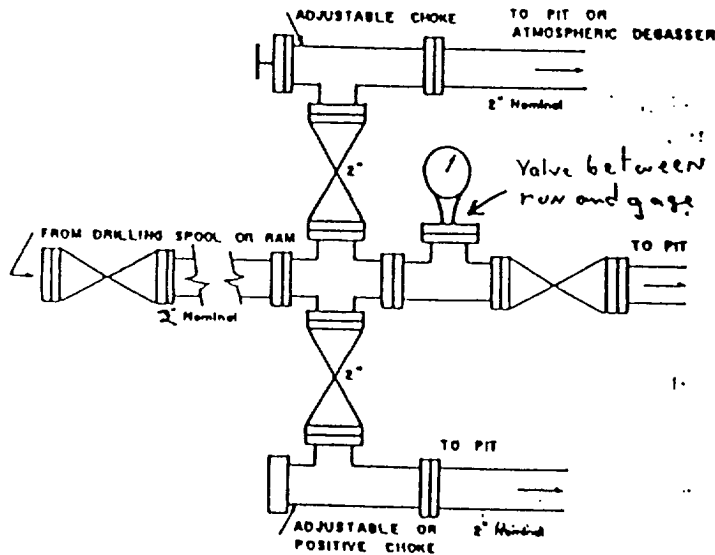


FIGURE K4-1. GPC recommended choke manifold for 2000 and 3000 psi WP service.