

DISTRICT I  
1625 N. French Dr., Hobbs, NM 88240

State of New Mexico  
Energy, Minerals and Natural Resources Department

Form C-101  
Revised March 17, 1999  
Instructions on back  
Submit to appropriate District Office

DISTRICT II  
811 South First, Artesia, NM 88210

OIL CONSERVATION DIVISION

State Lease - 6 Copies  
Fee Lease - 5 Copies

DISTRICT III  
1000 Rio Brazos Rd., Aztec, NM 87410

PO BOX 2088  
Santa Fe, NM 87504-2088

DISTRICT IV  
2040 South Pacheco, Santa Re, NM 8750:

☐ AMENDED REPORT

APPLICATION FOR PERMIT TO DRILL, RE-ENTER, DEEPEN, PLUGBACK, OR ADD A ZONE

<sup>1</sup> Operator Name and Address Yates Petroleum Corporation 105 South Fourth Street Artesia, New Mexico 88210		<sup>2</sup> OGRID Number 025575
		<sup>3</sup> API Number 30-025-31272
<sup>4</sup> Property Code 19382	<sup>5</sup> Property Name Eidson Ranch "AQB" State	<sup>6</sup> Well No. 2

<sup>7</sup> Surface Location

UL or lot no.	Section	Township	Range	Lot Idn	Feet from the	North/South Line	Feet from the	East/West Line	County
Q	5	16S	33E		2080	South	660	East	Lea

<sup>8</sup> Proposed Bottom Hole Location If Different From Surface

UL or lot no.	Section	Township	Range	Lot Idn	Feet from the	North/South Line	Feet from the	East/West Line	County
<sup>9</sup> Proposed Pool 1 Wildcat Morrow					<sup>10</sup> Proposed Pool 2				

<sup>11</sup> Work Type Code E	<sup>12</sup> Well Type Code G	<sup>13</sup> Cable/Rotary R	<sup>14</sup> Lease Type Code S	<sup>15</sup> Ground Level Elevation 4218'
<sup>16</sup> Multiple No	<sup>17</sup> Proposed Depth 13,600'	<sup>18</sup> Formation Morrow	<sup>19</sup> Contractor Not Determined	<sup>20</sup> Spud Date ASAP

<sup>21</sup> Proposed Casing and Cement Program

Hole Size	Casing Size	Casing weight/feet	Setting Depth	Sacks of Cement	Estimated TOC
17 1/4"	13 3/8	54.5#	415'-in place	450 sx	Circulated
11"	8 5/8"	32#	4472'-in place	1950 sx	Circulated
7 7/8"	5 1/2"	17# & 20#	2800'-13650'inpla	1400sx	TOC-4620'
7 7/8"	5 1/25 1/2"	17#	Tie-in @ 2800'	450 sx	Circulate

<sup>22</sup> Describe the proposed program. If this application is to DEEPEN or PLUG BACK give the data on the present productive zone and proposed new productivity. Describe the blowout prevention program, if any. Use additional sheets if necessary.

See Attached Sheet --- Non-Standard Location has been applied for.

Permit Expires 1 Year From Approval  
Date Unless Drilling Underway

*Re-entry*

<sup>23</sup> I hereby certify that the information given above is true and complete to the best of my knowledge and belief.		OIL CONSERVATION DIVISION	
Signature: <i>Clifton R. May</i>		Approved by: <i>PAUL F. KAUTZ</i>	
Printed name: Clifton R. May		Title: PETROLEUM ENGINEER	
Title: Regulatory Agent		Approval Date: SEP 04 2002	Expiration Date:
Date: 08/16/02	Phone: (505) 748-1471	Conditional Approval Attached <input type="checkbox"/>	

5  
C  
A

**YATES PETROLEUM CORPORATION**  
**Eidson Ranch "AQB" State #2 Re-entry**  
**2080' FSL & 660' FEL**  
**Section 5-T16S-R33E**  
**Lea County, New Mexico**  
**Lease #V-3273**

**Drilling Plans:** Yates Petroleum Corporation plans to re-enter this well bore that was originally drilled by Yates Petroleum as their Eidson Ranch Unit #1 which was plugged in 1994. Yates will use a pulling unit and a reverse unit to drill out the cement plugs in the 8 5/8" casing which was set at 4472'. The plugs will be cleaned out to the top of the 5 1/2" casing which was cut at 2800'. The 5 1/2" casing will be repaired and tied back to surface and cemented to surface. As the 5 1/2" casing is being cleaned out to a depth of 13,400, Yates will squeeze the perforations in the San Andres, Glorieta, Wolfcamp, Seamon, and Lower Canyon. The mud program to be used will be 9.4 – 9.8 ppg brine water with a 55-70 viscosity. A 3000# BOPE will be installed on the 8 5/8" casing. After the 5 1/2" casing is repaired a 3000# BOPE will be nipped up on the 5 1/2" casing.

**The well will be completed using a pulling unit. The Morrow formation will be perforated and treated as warranted to gain production.**


Eldson Ranch "AQB"  
State #1 (oil well)

V-3273

Q

2310'

2080'

990'

660'

**OPERATOR CERTIFICATION**

*I hereby certify that the information contained herein is true and complete to the best of my knowledge and belief.*

*Clifton R. May*

Signature

Clifton R. May

Printed Name

Regulatory Agent

Title

August 16, 2002

Date

**SURVEYOR CERTIFICATION**

*I hereby certify that the well location shown on this plat was plotted from field notes of actual surveys made by me or under my supervision, and that the same is true and correct to the best of my belief.*

Refer to original plat

Date Surveyed

Signature & Seal of Professional Surveyor

Certificate No. Herschel L. Jones RLS 3640

GENERAL SURVEYING COMPANY

# OIL CONSERVATION DIVISION

P.O. Box 2088  
Santa Fe, New Mexico 87504-2088

DISTRICT I  
P.O. Box 1980, Hobbs, NM 88240

DISTRICT II  
P.O. Drawer DD, Artesia, NM 88210

DISTRICT III  
1000 Rio Brazos Rd., Aztec, NM 87410

## WELL LOCATION AND ACREAGE DEDICATION PLAT

All Distances must be from the outer boundaries of the section

Operator <b>YATES PETROLEUM CORPORATION</b>			Lease <b>EIDSON RANCH UNIT</b>		Well No. <b>1</b>
Unit Letter	Section	Township	Range	County	
	<b>5</b>	<b>16 SOUTH</b>	<b>33 EAST</b>	<b>NMPM</b>	<b>LEA</b>
Actual Footage Location of Well: <b>660</b> feet from the <b>EAST</b> line and <b>2080</b> feet from the <b>SOUTH</b> line					
Ground level Elev. <b>4218</b>	Producing Formation <b>MORROW</b>		Pool <b>WILDCAT MORROW</b>	Dedicated Acreage: <b>320</b> Acres	

1. Outline the acreage dedicated to the subject well by colored pencil or hatchure marks on the plat below.
2. If more than one lease is dedicated to the well, outline each and identify the ownership thereof (both as to working interest and royalty).
3. If more than one lease of different ownership is dedicated to the well, have the interest of all owners been consolidated by communitization, unitization, force-pooling, etc.?  
☐ Yes ☐ No If answer is "yes" type of consolidation \_\_\_\_\_  
If answer is "no" list the owners and tract descriptions which have actually been consolidated. (Use reverse side of this form if necessary.)  
No allowable will be assigned to the well until all interests have been consolidated (by communitization, unitization, forced-pooling, or otherwise) or until a non-standard unit, eliminating such interest, has been approved by the Division.

### OPERATOR CERTIFICATION

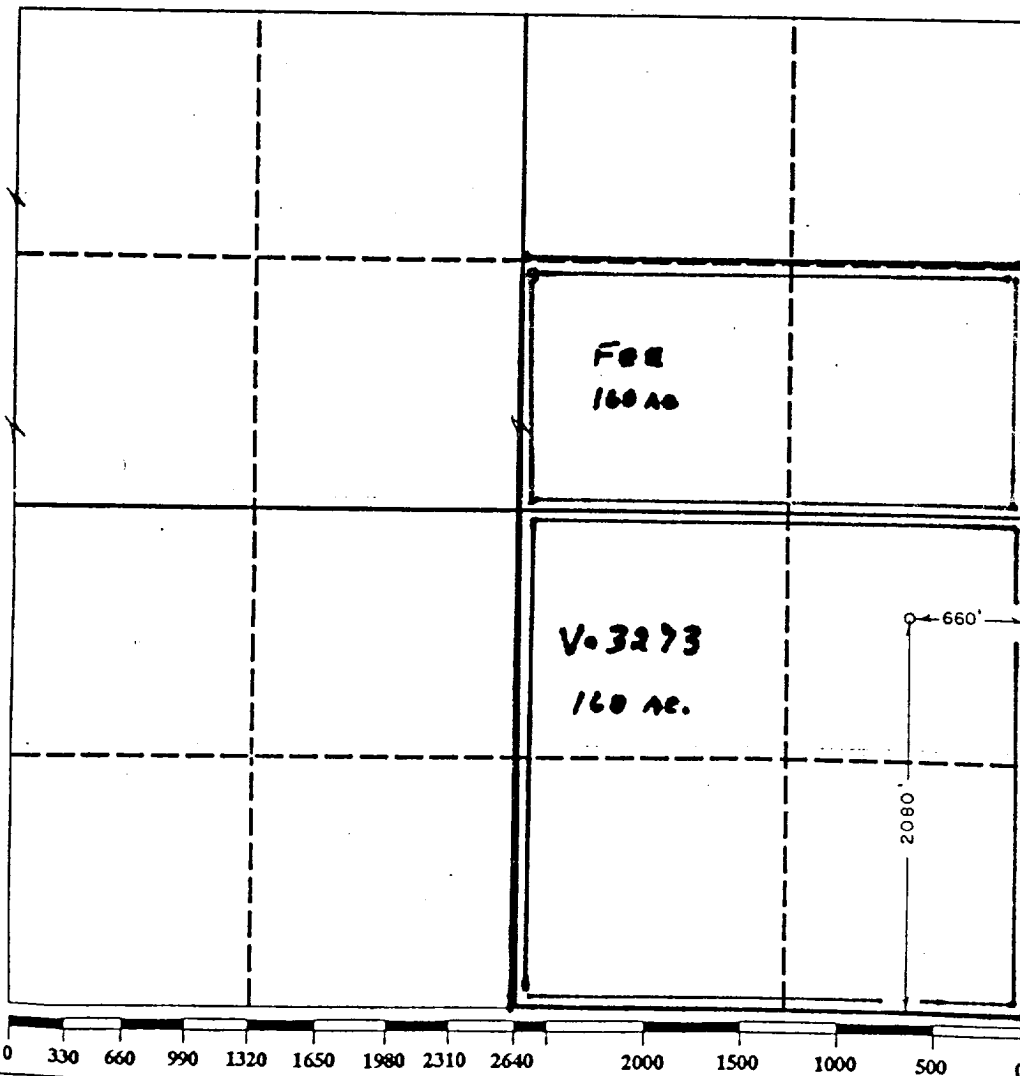
I hereby certify that the information contained herein is true and complete to the best of my knowledge and belief.

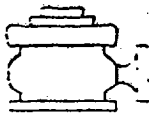
Signature **Clifton R. May**  
Printed Name **CLIFTON R. MAY**  
Position **REGULATORY ASST**  
Company **YATES PET. CORPORATION**  
Date **5-30-91**

### SURVEYOR CERTIFICATION

I hereby certify that the well location shown on this plat was plotted from field notes of actual surveys made by me or under my supervision, and that the same is true and correct to the best of my knowledge and belief.

Date Surveyed **5/23/91**  
Signature & Seal of Professional Surveyor

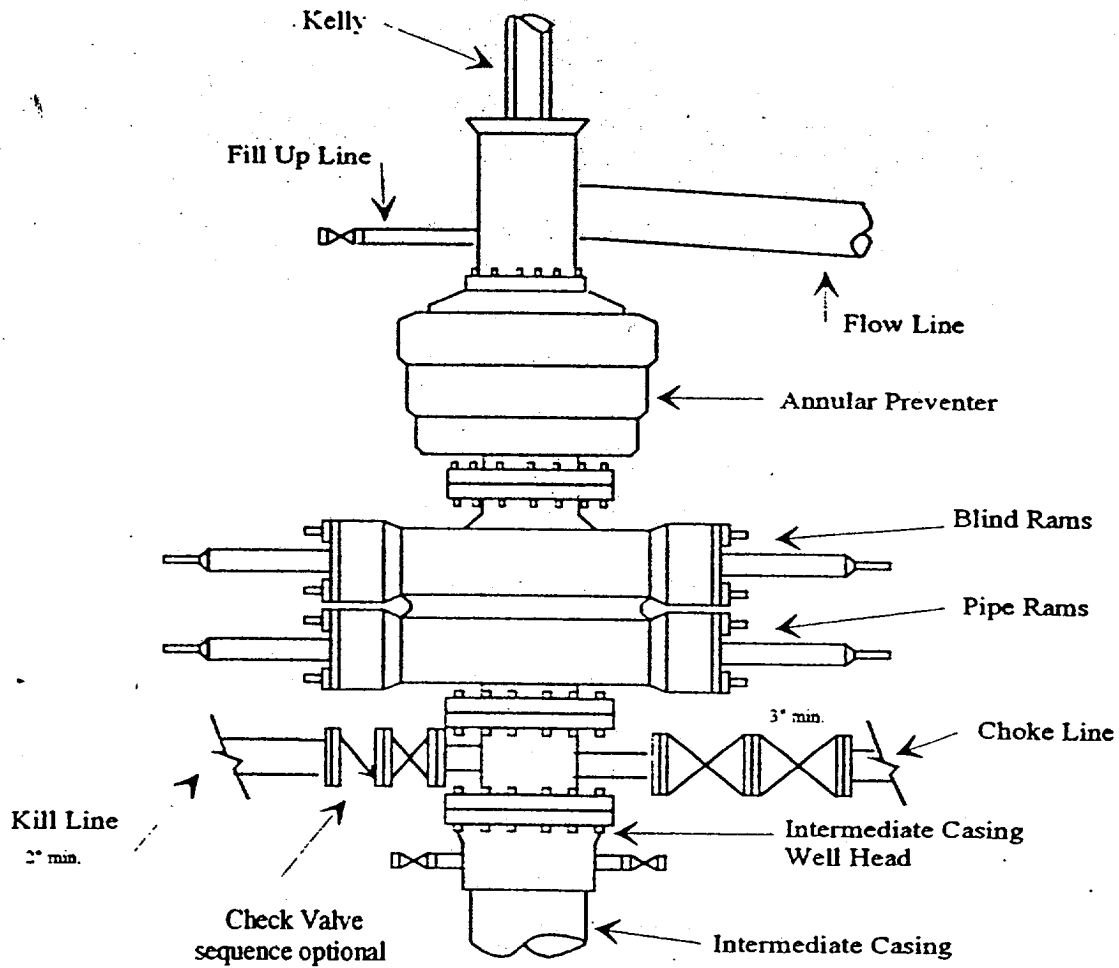




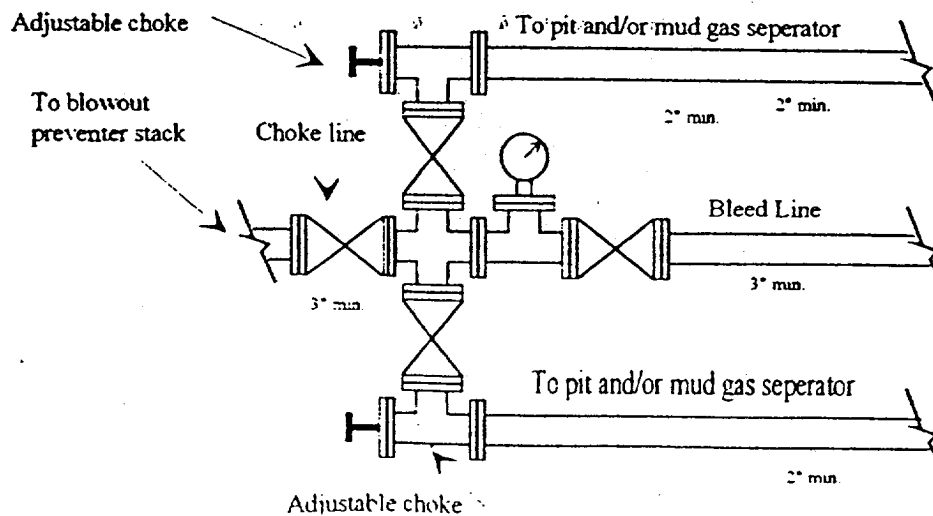
# ates Petroleum Corporation

BOP-3

## Typical 3,000 psi Pressure System Schematic Annular with Double Ram Preventer Stack



Typical 3,000 psi choke manifold assembly with at least these minimum features



Well Name: Eidson Ranch Unit No. 1 Field: \_\_\_\_\_

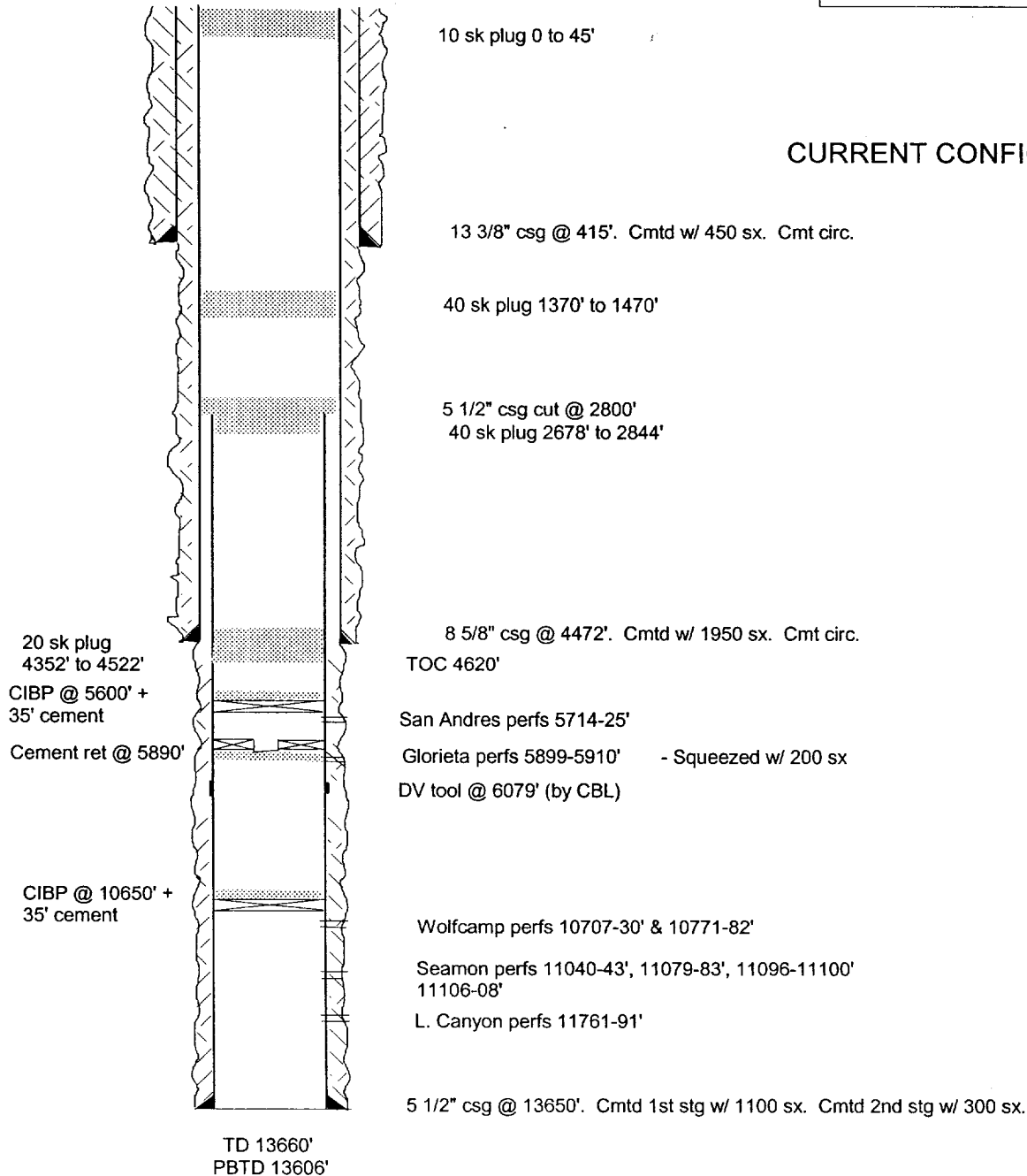
Location: 2080' FSL & 660' FEL Sec. 5-16S-33E Lea Co., NM

GL: 4218' Zero: \_\_\_\_\_ AGL: \_\_\_\_\_ KB: 4235'

Spud Date: 6-30-91 Completion Date: 7-26-94

Comments: Well drilled by YPC. P&A'd in 1994.

Casing Program	
Size/Wt/Grade/Conn	Depth Set
13 3/8" 54.5# J55	415'
8 5/8" 32# S80 & J55	4472'
5 1/2" 17# S95 & N80	13650'



## CURRENT CONFIGURATION

SKETCH NOT TO SCALE

DATE: \_\_\_\_\_

**YATES PETROLEUM CORPORATION**Well Name: **Eldson Ranch "AQB" State #2 Re-entry;**

Location: 2080' FSL &amp; 660' FEL Sec. 5-16S-33E Lea Co., NM

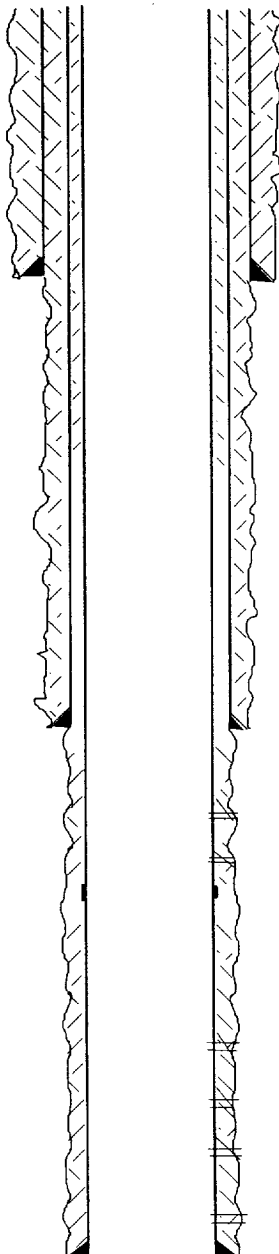
GL: 4218' Zero: AGL: KB: 4235'

Spud Date: 6-30-91 Completion Date: 7-26-94

Comments: Well drilled by YPC. P&amp;A'd in 1994.

**Casing Program**

Size/Wt/Grade/Conn	Depth Set
13 3/8" 54.5# J55	415'
8 5/8" 32# S80 & J55	4472'
5 1/2" 17# S95 & N80	13650'

**PROPOSED CONFIGURATION**

13 3/8" csg @ 415'. Cmtd w/ 450 sx. Cmt circ.

5 1/2" csg cut @ 2800'

8 5/8" csg @ 4472'. Cmtd w/ 1950 sx. Cmt circ.  
TOC 4620'San Andres perms 5714-25' -Squeezed  
Glorieta perms 5899-5910' - Squeezed w/ 200 sx  
DV tool @ 6079' (by CBL)Wolfcamp perms 10707-30' & 10771-82' -Squeezed  
Seamon perms 11040-43', 11079-83', 11096-11100' -Squeezed  
11106-08'  
L. Canyon perms 11761-91' - Squeezed

Morrow perms 13224'-13232' &amp; 13239-13248'

5 1/2" csg @ 13650'. Cmtd 1st stg w/ 1100 sx. Cmtd 2nd stg w/ 300 sx.

TD 13660'  
PBTD 13606'

SKETCH NOT TO SCALE

DATE: \_\_\_\_\_