

Submit to Appropriate
District Office
State Lease - 6 copies
Fee Lease - 2 copies

State of New Mexico
Energy, Minerals and Natural Resources Department

Form C-101
Revised 1-1-89

OIL CONSERVATION DIVISION

P.O. Box 2088
Santa Fe, New Mexico 87504-2088

DISTRICT I
P.O. Box 1980, Hobbs, NM 88240

DISTRICT II
P.O. Drawer DD, Artesia, NM 88210

DISTRICT III
1000 Rio Brazos Rd., Aztec, NM 87410

API NO. (assigned by OCD on New Wells)

30-025-31564

5. Indicate Type of Lease

STATE ☐

FEE ☒

6. State Oil & Gas Lease No.

APPLICATION FOR PERMIT TO DRILL, DEEPEN, OR PLUG BACK

1a. Type of Work:

DRILL ☒

RE-ENTER ☐

DEEPEN ☐

PLUG BACK ☐

b. Type of Well:

OIL
WELL ☒

GAS
WELL ☐

OTHER ☐

SINGLE
ZONE ☐

MULTIPLE
ZONE ☐

7. Lease Name or Unit Agreement Name

Lovington Paddock Unit

8. Well No.

127

9. Pool name or Wildcat

Lovington Paddock

2. Name of Operator

GREENHILL PETROLEUM CORPORATION

3. Address of Operator

11490 Westheimer, Suite 200, Houston, Texas 77077

4. Well Location

Unit Letter C : 150 Feet From The North Line and 2500 Feet From The West Line

Section 31

Township 16 South

Range 37 East

NMPM

Lea

County

10. Proposed Depth
6450'

11. Formation
Paddock

12. Rotary or C.T.
Rotary

13. Elevations (Show whether DF, RT, GR, etc.)
3825 GR

14. Kind & Status Plug. Bond
on file

15. Drilling Contractor
TBD

16. Approx. Date Work will start
4-1-92

17.

PROPOSED CASING AND CEMENT PROGRAM

SIZE OF HOLE	SIZE OF CASING	WEIGHT PER FOOT	SETTING DEPTH	SACKS OF CEMENT	EST. TOP
12 1/4 "	8 5/8 "	24	1300'	550	surface
7 7/8 "	5 1/2 "	15.5	6450'	1100	surface

IN ABOVE SPACE DESCRIBE PROPOSED PROGRAM: IF PROPOSAL IS TO DEEPEN OR PLUG BACK, GIVE DATA ON PRESENT PRODUCTIVE ZONE AND PROPOSED NEW PRODUCTIVE ZONE. GIVE BLOWOUT PREVENTER PROGRAM, IF ANY.

I hereby certify that the information above is true and complete to the best of my knowledge and belief.

SIGNATURE Michael J. Newport TITLE Land Manager-Permian Basin DATE 3-24-92

TYPE OR PRINT NAME Michael J. Newport (713) TELEPHONE NO. 589-8484

(This space for State Use)

Orig. Signed by
Paul Kautz
Geologist

APR 16 1992

APPROVED BY _____ TITLE _____ DATE _____

CONDITIONS OF APPROVAL, IF ANY:

NSL-3109

Permit Expires 6 Months From Approval
Date Unless Drilling Underway.

OIL CONSERVATION DIVISION

P.O. Box 2088
Santa Fe, New Mexico 87504-2088

DISTRICT I

P.O. Box 1990, Hobbs, NM 88240

DISTRICT II

P.O. Drawer DD, Artesia, NM 88210

DISTRICT III

1000 Rio Brazos Rd., Artec, NM 87410

WELL LOCATION AND ACREAGE DEDICATION PLAT

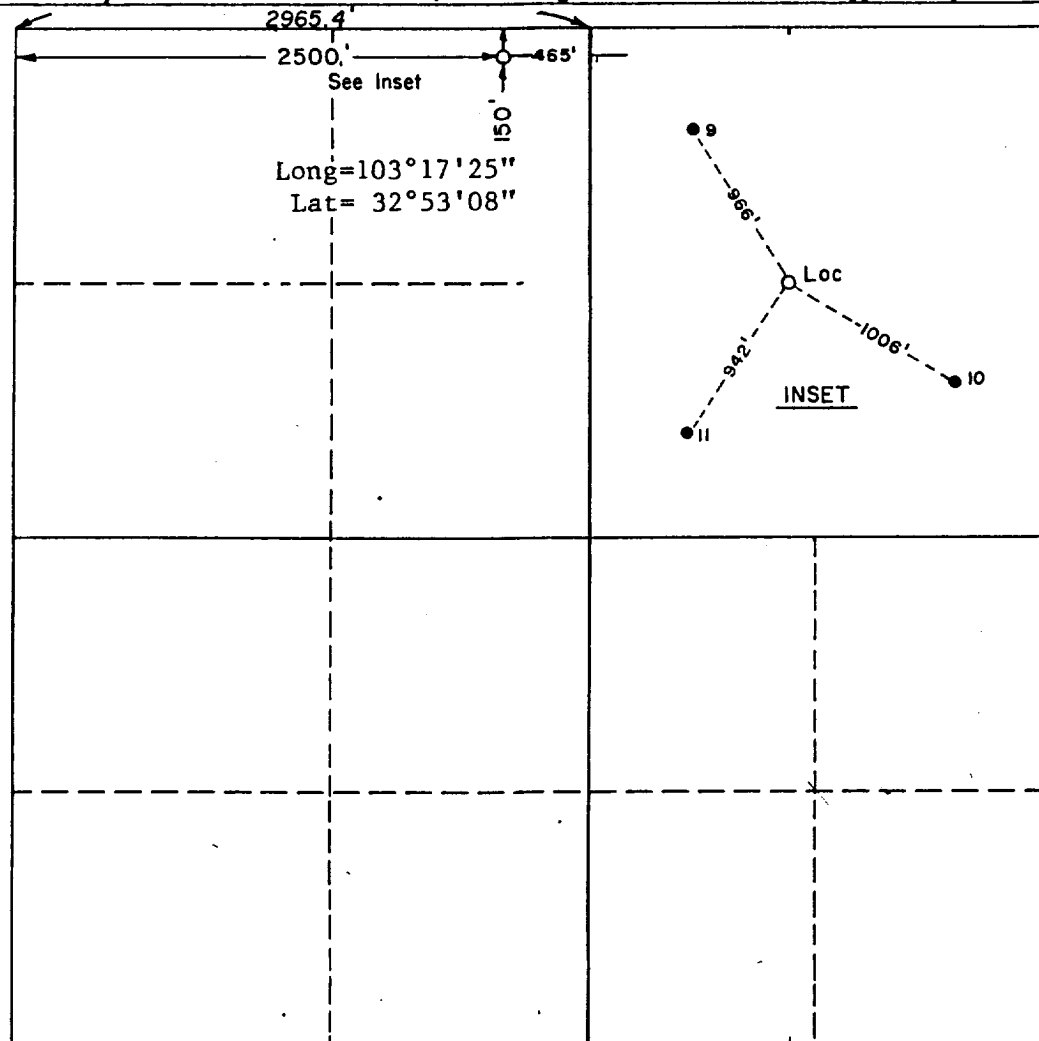
All Distances must be from the outer boundaries of the section

Operator Greenhill Petroleum Corp.			Lease Lovington Paddock Unit		Well No. 127
Unit Letter C	Section 31	Township 16 South	Range 37 East	County Lea	
Actual Footage Location of Well: 150 feet from the north line and 2500 feet from the west line					
Ground Level Elev. 3825.7'	Producing Formation Lovington Paddock		Pool Lovington Paddock	Dedicated Acreage: 40 Acres	

1. Outline the acreage dedicated to the subject well by colored pencil or hachure marks on the plat below.
2. If more than one lease is dedicated to the well, outline each and identify the ownership thereof (both as to working interest and royalty).
3. If more than one lease of different ownership is dedicated to the well, have the interest of all owners been consolidated by communitization, unitization, force-pooling, etc.?
☒ Yes ☐ No If answer is "yes" type of consolidation unitized

If answer is "no" list of owners and tract descriptions which have actually been consolidated. (Use reverse side of this form necessary.)

No allowable will be assigned to the well unit all interests have been consolidated (by communitization, unitization, forced-pooling, otherwise) or until a non-standard unit, eliminating such interest, has been approved by the Division.



OPERATOR CERTIFICATION

I hereby certify the the information contained herein is true and complete to the best of my knowledge and belief.

Signature

Printed Name

Position

Company

Date

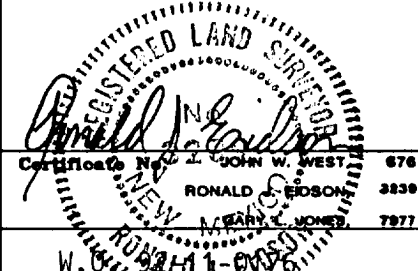
SURVEYOR CERTIFICATION

I hereby certify that the well location shown on this plat was plotted from field notes of actual surveys made by me or under my supervision, and that the same is true and correct to the best of my knowledge and belief.

Date Surveyed

February 6, 1992

Signature & Seal of Professional Surveyor



GREENHILL PETROLEUM CORPORATION
BOP PROGRAM FOR
LOVINGTON PADDOCK UNIT #127

Casing Program

BOP Program

Size	Depth	Wt.	Grade	Configuration	Test Pressure
8-5/8"	1300'	24	H40, STC	RA*	200 psi
5-1/2"	6450'	15.5	K55, STC	RR*	250/1500 psi

* = RR-Ram Ram
* = RA-Ram Annular

Diverter-Hydrill may be substituted for a diverter.

sjs:s
92.215

03/24/92