

Submit to Appropriate  
District Office  
State Lease - 6 copies  
Fee Lease - 5 copies

State of New Mexico  
E , Minerals and Natural Resources Department

Form C-101  
Revised 1-1-89

DISTRICT I  
P.O. Box 1980, Hobbs, NM 88240

DISTRICT II  
P.O. Drawer DD, Artesia, NM 88210

DISTRICT III  
1000 Rio Brazos Rd., Aztec, NM 87410

## OIL CONSERVATION DIVISION

P.O. Box 2088  
Santa Fe, New Mexico 87504-2088

API NO. (assigned by OCD on New Wells)

30 025-31685

5. Indicate Type of Lease

STATE ☒

FEE ☐

6. State Oil & Gas Lease No.

V-3541

### APPLICATION FOR PERMIT TO DRILL, DEEPEN, OR PLUG BACK

1a. Type of Work:

DRILL ☒

RE-ENTER ☐

DEEPEN ☐

PLUG BACK ☐

b. Type of Well:

OIL  
WELL ☒

GAS  
WELL ☐

OTHER ☐

SINGLE  
ZONE ☐

MULTIPLE  
ZONE ☐

7. Lease Name or Unit Agreement Name

prop code 012217

Eidson Ranch Unit

pool code 02283

8. Well No.

5

9. Pool name or Wildcat  
Wildcat San Andres

4. Well Location

Unit Letter

M

: 3300

Feet From The

South

Line and

660

Feet From The

West

Line

Section

4

Township

16 South

Range

33 East

NMPM

Lea

County

10. Proposed Depth

6000'

11. Formation

San Andres

12. Rotary or C.T.

Rotary

13. Elevations (Show whether DF, RT, GR, etc.)

4237' GR

14. Kind & Status Plug. Bond

Blanket

15. Drilling Contractor

Grace

16. Approx. Date Work will start

ASAP

17.

### PROPOSED CASING AND CEMENT PROGRAM

SIZE OF HOLE	SIZE OF CASING	WEIGHT PER FOOT	SETTING DEPTH	SACKS OF CEMENT	EST. TOP
12 1/4"	9 5/8"	36#	1500'	750	Circulate
8 3/4"	7"	23# & 26#	TD		As warranted

Yates Petroleum Corporation proposes to drill and test the San Andres formation. Approximately 1500' of surface casing will be set and cement circulated to surface. If commercial, production casing will be run and cemented with adequate cover, perforated and stimulated as needed for production.

MUD PROGRAM: Native mud and paper to 1500'; SW Gel/Starch to TD.

BOPE PROGRAM: BOPE will be installed on the 9 5/8" casing and tested daily for operational.

IN ABOVE SPACE DESCRIBE PROPOSED PROGRAM: IF PROPOSAL IS TO DEEPEN OR PLUG BACK, GIVE DATA ON PRESENT PRODUCTIVE ZONE AND PROPOSED NEW PRODUCTIVE ZONE. GIVE BLOWOUT PREVENTER PROGRAM, IF ANY.

I hereby certify that the information above is true and complete to the best of my knowledge and belief.

SIGNATURE

Clifton R. May

TITLE

Permit Agent

DATE

8-5-92

TYPE OR PRINT NAME

Clifton R. May

TELEPHONE NO. 748-1471

(This space for State Use)

Orig. Signed by  
Paul Kautz  
Geologist

APPROVED BY

TITLE

DATE

AUG 12 1992

CONDITIONS OF APPROVAL, IF ANY:

Permit Expires 6 Months From Approval  
Date Unless Drilling Underway.

Submit to Appropriate  
District Office  
State Lease - 4 copies  
Fee Lease - 3 copies

State of New Mexico  
Energy, Minerals and Natural Resources Department

Form C-102  
Revised 1-1-89

OIL CONSERVATION DIVISION

P.O. Box 2088

Santa Fe, New Mexico 87504-2088

DISTRICT I

P.O. Box 1980, Hobbs, NM 88240

DISTRICT II

P.O. Drawer DD, Artesia, NM 88210

DISTRICT III

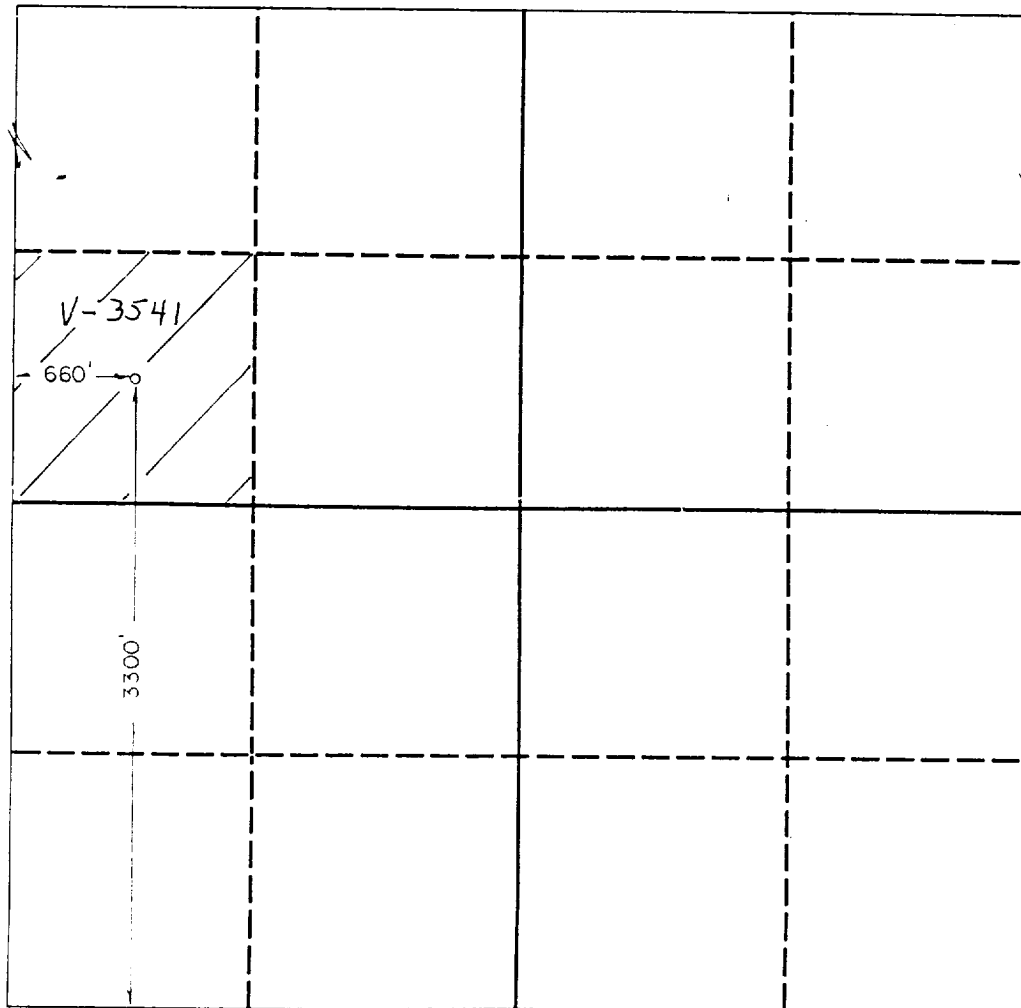
1000 Rio Brazos Rd., Aztec, NM 87410

WELL LOCATION AND ACREAGE DEDICATION PLAT

All Distances must be from the outer boundaries of the section

Operator YATES PETROLEUM CORPORATION			Lease EIDSON RANCH UNIT		Well No. 5
Unit Letter M	Section 4	Township 16 SOUTH	Range 33 EAST	County NMPM	LEA
Actual Footage Location of Well: 3300 feet from the SOUTH line and 660 feet from the WEST line					
Ground level Elev. 4237	Producing Formation SAN ANDRES		Pool ARAB-C SAN ANDRES	Dedicated Acreage: 40 Acres	

1. Outline the acreage dedicated to the subject well by colored pencil or hatchure marks on the plat below.
2. If more than one lease is dedicated to the well, outline each and identify the ownership thereof (both as to working interest and royalty).
3. If more than one lease of different ownership is dedicated to the well, have the interest of all owners been consolidated by communitization, unitization, force-pooling, etc.?  
☐ Yes ☐ No If answer is "yes" type of consolidation \_\_\_\_\_  
If answer is "no" list the owners and tract descriptions which have actually been consolidated. (Use reverse side of this form if necessary). \_\_\_\_\_  
No allowable will be assigned to the well until all interests have been consolidated (by communitization, unitization, forced-pooling, or otherwise) or until a non-standard unit, eliminating such interest, has been approved by the Division.



OPERATOR CERTIFICATION

I hereby certify that the information contained herein is true and complete to the best of my knowledge and belief.

Signature  
Clifton R. May

Printed Name  
Clifton R. May

Position  
Permit Agent

Company  
Yates Petroleum Corporation

Date  
August 5, 1992

SURVEYOR CERTIFICATION

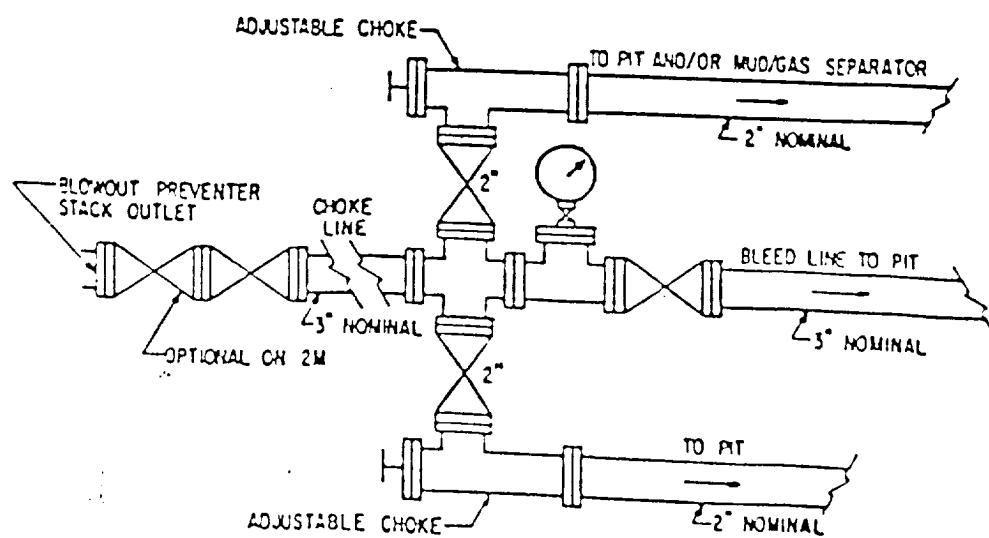
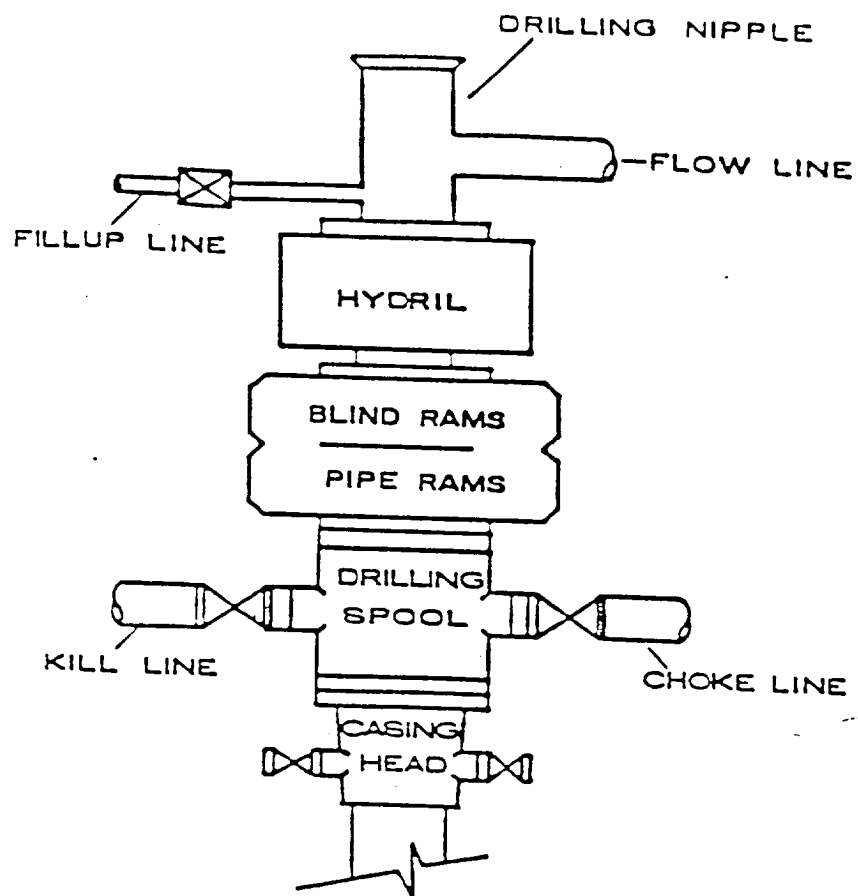
I hereby certify that the well location shown on this plat was plotted from field notes of actual surveys made by me or under my supervision, and that the same is true and correct to the best of my knowledge and belief.

Date Surveyed

Signature & Seal of Professional Surveyor

HERSCHEL L JONES  
3640  
Certified LAND SURVEYOR

0 330 660 990 1320 1650 1980 2310 2640 2000 1500 1000 500 0

BOP STACK

Rec'd 9-21-92

ELF

RECEIVED

AUG 11 1992

U.S. DEPARTMENT OF JUSTICE