

Submit to Appropriate
District Office
State Lease - 6 copies
Fee Lease - 5 copies

State of New Mexico
Energy, Minerals and Natural Resources Department

Form C-101
Revised 1-1-89

OIL CONSERVATION DIVISION

P.O. Box 2088
Santa Fe, New Mexico 87504-2088

DISTRICT I
P.O. Box 1980, Hobbs, NM 88240

DISTRICT II
P.O. Drawer DD, Artesia, NM 88210

DISTRICT III
1000 Rio Brazos Rd., Aztec, NM 87410

API NO. (assigned by OCD on New Wells)

30-025-31830

5. Indicate Type of Lease

STATE ☒ FEE ☐

6. State Oil & Gas Lease No.

E-9116

APPLICATION FOR PERMIT TO DRILL, DEEPEN, OR PLUG BACK

1a. Type of Work:

DRILL ☒ RE-ENTER ☐ DEEPEN ☐ PLUG BACK ☐

b. Type of Well:

OIL WELL ☒ GAS WELL ☐ OTHER ☐ SINGLE ZONE ☒ MULTIPLE ZONE ☐

7. Lease Name or Unit Agreement Name

Earnestine State

2. Name of Operator

Charles B. Gillespie, Jr.

8. Well No.

1

3. Address of Operator

P. O. Box 8 Midland, TX 79702

9. Pool name or Wildcat

East Big But
West Lovington Strawn

4. Well Location

Unit Letter B : 990 Feet From The North Line and 1980 Feet From The East Line

Section 1 Township 16-S Range 35-E NMPM Lea County

10. Proposed Depth

11,800'

11. Formation

Strawn

12. Rotary or C.T.

Rotary

13. Elevations (Show whether DF, RT, GR, etc.)

3978.3' GR

14. Kind & Status Plug. Bond

Blanket

15. Drilling Contractor

ZIADRIL, Inc.

16. Approx. Date Work will start

ASAP

17. PROPOSED CASING AND CEMENT PROGRAM

| SIZE OF HOLE | SIZE OF CASING | WEIGHT PER FOOT | SETTING DEPTH | SACKS OF CEMENT | EST. TOP |
|--------------|----------------|-----------------|---------------|-----------------|------------|
| 17 1/2" | 13 3/8" | 48# & 54.50# | 400' | 400 | Circulated |
| 11" | 8 5/8" | 32# | 4750' | 750 | 2500' |
| 7 7/8" | 5 1/2" | 17# | TD | 750 | 9500' |

We propose to drill and test to Atoka and intermediate formations. Approximately 400' of surface casing will be set and cement circulated. Approximately 4750' of intermediate casing will be set and cemented back to \pm 500' above the top of the Yates formation at 3000'. Production casing will be set to TD and cemented back to approximately 9500'.

Mud Program: fresh water, native mud to 10,000'. Mud up at 10,000' with salt gel.

BOP Program: BOP's will be installed at offset and tested daily.

IN ABOVE SPACE DESCRIBE PROPOSED PROGRAM: IF PROPOSAL IS TO DEEPEN OR PLUG BACK, GIVE DATA ON PRESENT PRODUCTIVE ZONE AND PROPOSED NEW PRODUCTIVE ZONE. GIVE BLOWOUT PREVENTER PROGRAM, IF ANY.

I hereby certify that the information above is true and complete to the best of my knowledge and belief.

SIGNATURE William R. Crow TITLE Exploration Manager DATE 12/7/92

TYPE OR PRINT NAME William R. Crow

TELEPHONE NO. (915) 683-1765

(This space for State Use)

Orig. Signed by
Paul Kantz
Geologist

APPROVED BY _____ TITLE _____ DATE _____

CONDITIONS OF APPROVAL, IF ANY:

Permit Expires 6 Months From Approval
Date Unless Drilling Underway.

DEC 1 1992

DISTRICT I

P.O. Box 1980, Hobbs, NM 88240

DISTRICT II

P.O. Drawer DD, Artesia, NM 88210

DISTRICT III

1000 Rio Brazos Rd., Aztec, NM 87410

OIL CONSERVATION DIVISION

P.O. Box 2088

Santa Fe, New Mexico 87504-2088

WELL LOCATION AND ACREAGE DEDICATION PLAT

All Distances must be from the outer boundaries of the section

| | | | | | |
|---------------------------------------|--------------|----------------------|---------------------------|------|---------------|
| Operator CHARLES B. GILLESPIE, JR. | | | Lease EARNESTINE STATE | | Well No. 1 |
| Unit Letter B | Section 1 | Township 16 SOUTH | Range 35 EAST | NMPM | County LEA |

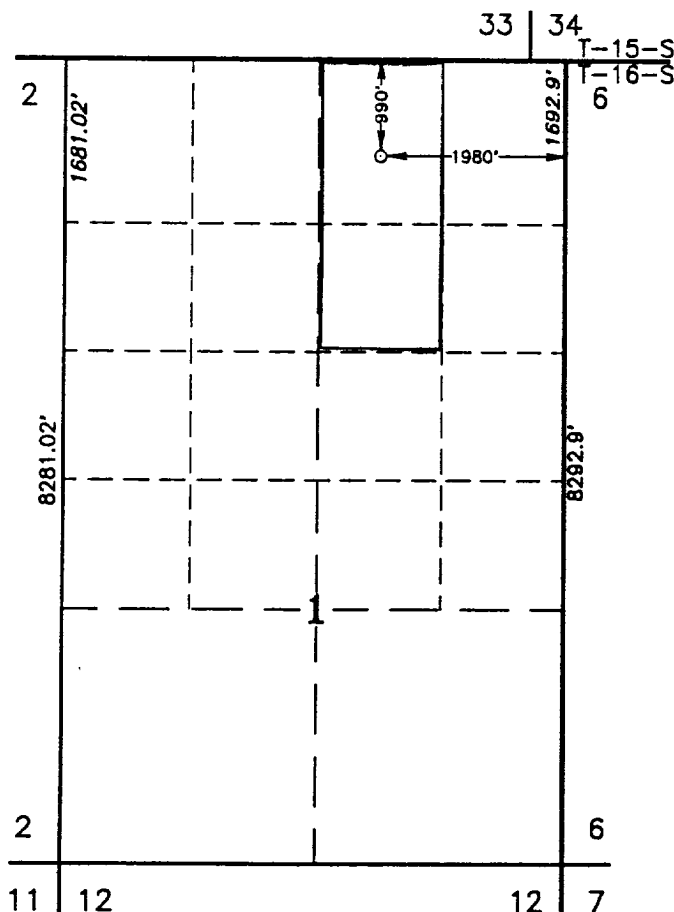
Actual Footage Location of Well:

| | | | |
|----------------------------------|-------------------------------|---|-----------------------------------|
| 990 feet from the NORTH line and | | 1980 feet from the EAST line | |
| Ground Level Elev. 3978.3' | Producing Formation Strawn | Pool <i>East Big Dry</i> West Livingston Strawn | Dedicated Acreage: 91.16 Acres |

- Outline the acreage dedicated to the subject well by colored pencil or hatchure marks on the plat below.
- If more than one lease is dedicated to the well, outline each and identify the ownership thereof (both as to working interest and royalty).
- If more than one lease of different ownership is dedicated to the well, have the interest of all owners been consolidated by communitization, unitization, force-pooling, etc.?
☐ Yes ☐ No If answer is "yes" type of consolidation _____

If answer is "no" list of owners and tract descriptions which have actually been consolidated. (Use reverse side of this form necessary.)

No allowable will be assigned to the well unit all interests have been consolidated (by communitization, unitization, forced-pooling, otherwise) or until a non-standard unit, eliminating such interest, has been approved by the Division.



SCALE : 1"=2000'

OPERATOR CERTIFICATION

I hereby certify that the information contained herein is true and complete to the best of my knowledge and belief.

Signature
William R. Crow
Printed Name
William R. Crow
Position
Exploration Manager
Company
Charles B. Gillespie, Jr.
Date
December 7, 1992

SURVEYOR CERTIFICATION

I hereby certify that the well location shown on this plat was plotted from field notes of actual surveys made by me or under my supervision, and that the same is true and correct to the best of my knowledge and belief.

Date Surveyed
NOVEMBER 25, 1992

Signature & Seal of
Professional Surveyor

Gary L. Jones
Certification No. JOHN W. WEST, 876
RONALD J. EIDSON, 3239
GARY L. JONES, 7977

92-11-1860

EEF
Mud 3-9-93