

# OIL CONSERVATION DIVISION

P.O. Box 2088  
Santa Fe, New Mexico 87504-2088

## DISTRICT I

P.O. Box 1980, Hobbs, NM 88240

## DISTRICT II

P.O. Drawer DD, Artesia, NM 88210

## DISTRICT III

1000 Rio Brazos Rd., Artec, NM 87410

## WELL LOCATION AND ACREAGE DEDICATION PLAT

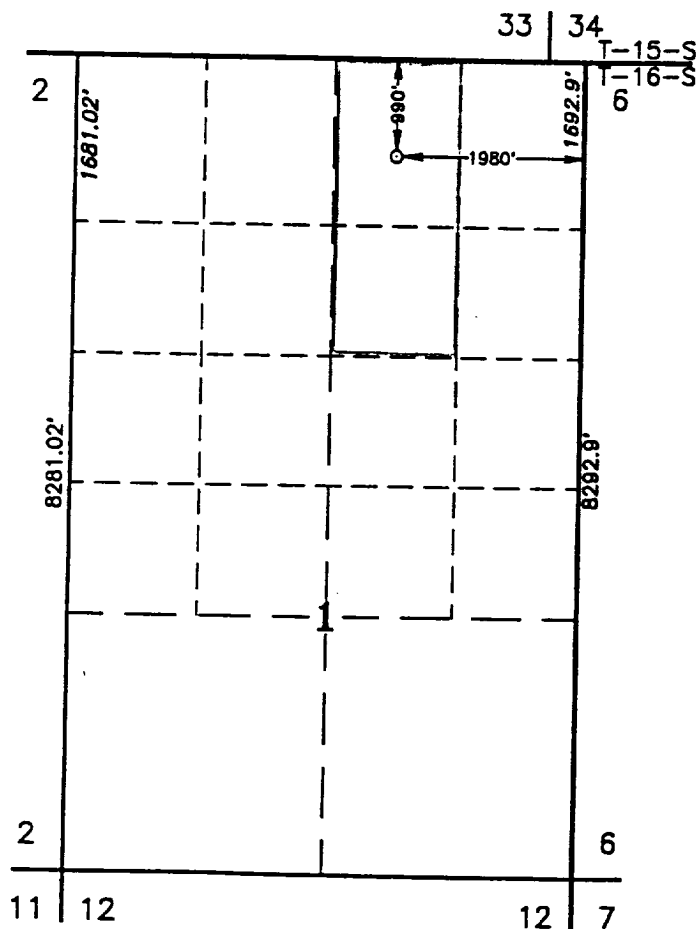
All Distances must be from the outer boundaries of the section

Operator CHARLES B. GILLESPIE, JR.			Lease EARNESTINE STATE		Well No. 1
Unit Letter B	Section 1	Township 16 SOUTH	Range 35 EAST	NMPM	County LEA
Actual Footage Location of Well: 990 feet from the NORTH line and 1980 feet from the EAST line					
Ground Level Elev. 3978.3'	Producing Formation Strawn		Pool <i>West Lexington</i> <del>East Lexington</del> West Lexington Strawn		Dedicated Acreage: 91.16 Acres

- Outline the acreage dedicated to the subject well by colored pencil or hatchure marks on the plat below.
- If more than one lease is dedicated to the well, outline each and identify the ownership thereof (both as to working interest and royalty).
- If more than one lease of different ownership is dedicated to the well, have the interest of all owners been consolidated by communitization, unitization, force-pooling, etc.?  
☐ Yes ☐ No If answer is "yes" type of consolidation \_\_\_\_\_

If answer is "no" list of owners and tract descriptions which have actually been consolidated. (Use reverse side of this form necessary.)

No allowable will be assigned to the well unit all interests have been consolidated (by communitization, unitization, forced-pooling, otherwise) or until a non-standard unit, eliminating such interest, has been approved by the Division.



SCALE : 1"=2000'

### OPERATOR CERTIFICATION

I hereby certify the the information contained herein is true and complete to the best of my knowledge and belief.

Signature  
*William R. Crow*  
Printed Name  
William R. Crow  
Position  
Exploration Manager  
Company  
Charles B. Gillespie, Jr.  
Date  
December 7, 1992

### SURVEYOR CERTIFICATION

I hereby certify that the well location shown on this plat was plotted from field notes of actual surveys made by me or under my supervision, and that the same is true and correct to the best of my knowledge and belief.

Date Surveyed  
NOVEMBER 25, 1992

Signature & Seal of  
Professional Surveyor

*John W. West*  
Certificate No. JOHN W. WEST 7876  
RONALD J. EIDSON 3239  
GARY L. JONES 7877

92-11-1860