

OIL CONSERVATION DIVISION

P.O. Box 2088
Santa Fe, New Mexico 87504-2088

DISTRICT I

P.O. Box 1980, Hobbs, NM 88240

DISTRICT II

P.O. Drawer DD, Artesia, NM 88210

DISTRICT III

1000 Rio Brazos Rd., Aztec, NM 87410

WELL LOCATION AND ACREAGE DEDICATION PLAT

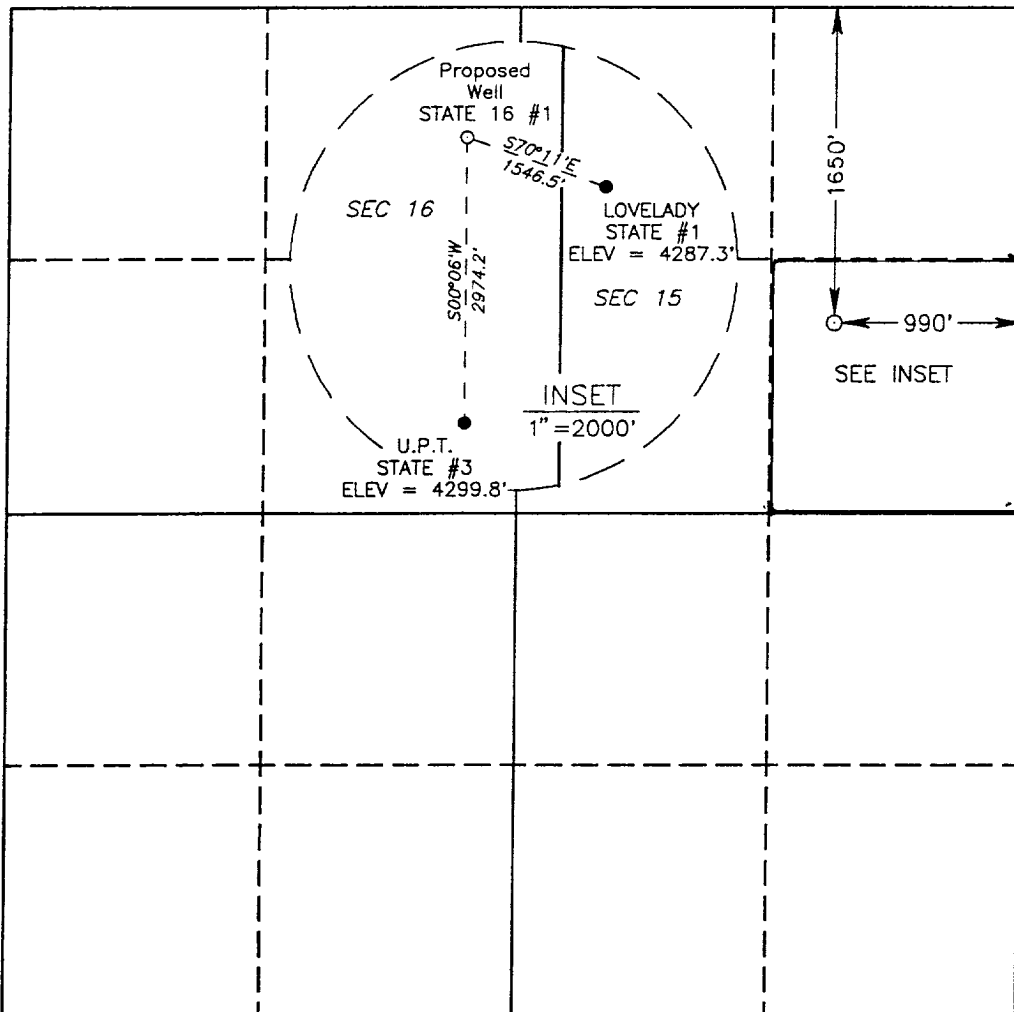
All Distances must be from the outer boundaries of the section

Operator H.L. BROWN, JR.			Lease STATE 16		Well No. 1
Unit Letter H	Section 16	Township 15 SOUTH	Range 32 EAST	County NMPM	LEA
Actual Footage Location of Well:					
1650 feet from the NORTH line and		990 feet from the EAST line			
Ground Level Elev. 4297.9'	Producing Formation Morrow	Pool Feather Morrow Oil		Dedicated Acreage: 40 Acres	

1. Outline the acreage dedicated to the subject well by colored pencil or hachure marks on the plat below.
2. If more than one lease is dedicated to the well, outline each and identify the ownership thereof (both as to working interest and royalty).
3. If more than one lease of different ownership is dedicated to the well, have the interest of all owners been consolidated by communization, unitization, force-pooling, etc.?
☐ Yes ☐ No If answer is "yes" type of consolidation _____

If answer is "no" list of owners and tract descriptions which have actually been consolidated. (Use reverse side of this form necessary.) _____

No allowable will be assigned to the well unit all interests have been consolidated (by communization, unitization, forced-pooling, otherwise) or until a non-standard unit, eliminating such interest, has been approved by the Division.



OPERATOR CERTIFICATION

I hereby certify the the information contained herein is true and complete to the best of my knowledge and belief.

Signature

Robert Wilson

Printed Name

Robert Wilson

Position

Production Engineer

Company

H. L. Brown, Jr.

Date

January 5, 1993

SURVEYOR CERTIFICATION

I hereby certify that the well location shown on this plat was plotted from field notes of actual surveys made by me or under my supervision, and that the same is true and correct to the best of my knowledge and belief.

Date Surveyed

DECEMBER 15, 1992

Signature & Seal of Professional Surveyor

Gary L. Jones

Certificate No.

JOHN W. WEST, 676

RONALD J. EIDSON, 3239

GARY L. JONES, 7977

92-11-1977