

CONSERVATION DIVISION

P.O. Box 2088

Santa Fe, New Mexico 87504-2088

DISTRICT I

P.O. Box 1980, Hobbs, NM 88240

DISTRICT II

P.O. Drawer DD, Artesia, NM 88210

DISTRICT III

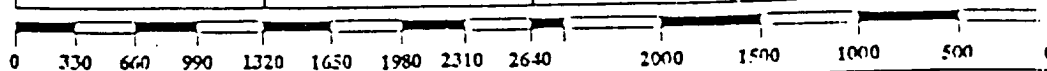
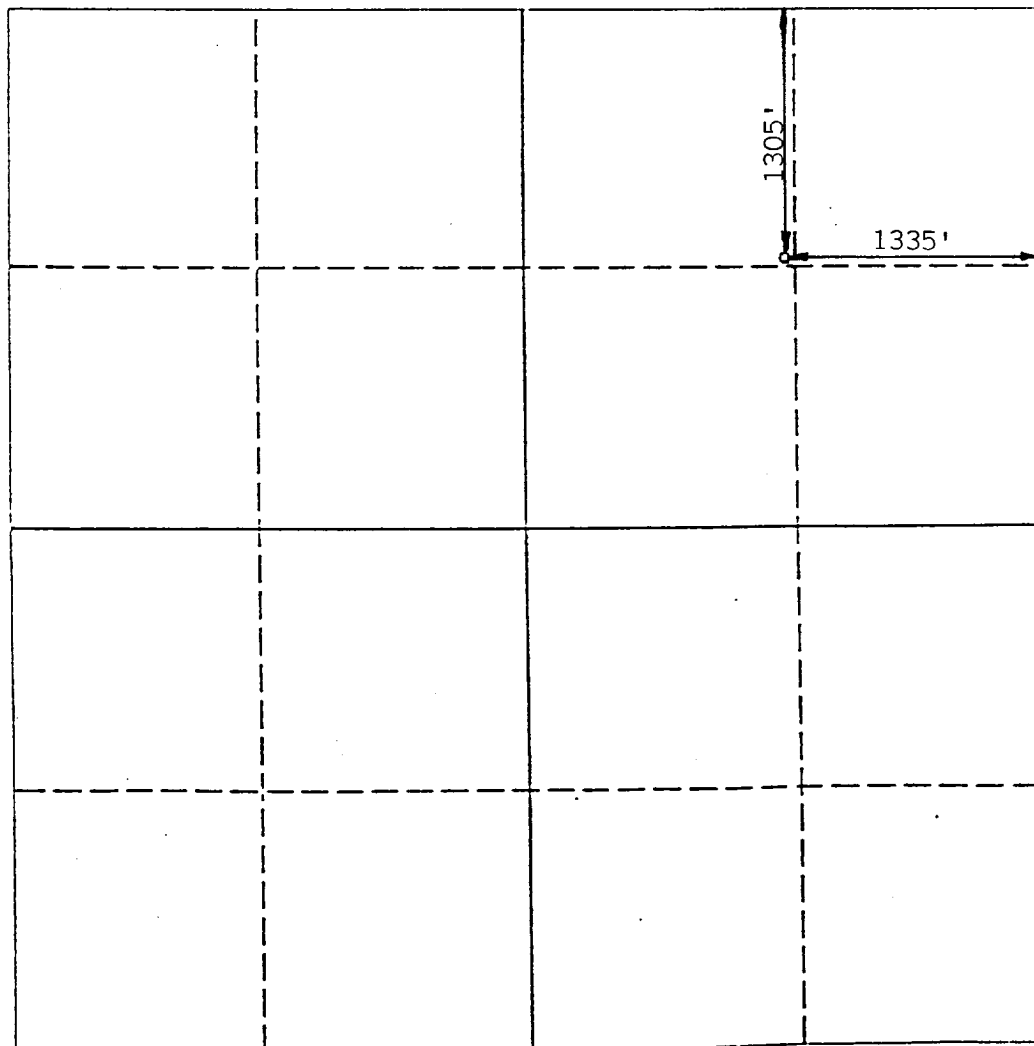
1000 Rio Brazos Rd., Aztec, NM 87410

WELL LOCATION AND ACREAGE DEDICATION PLAT

All Distances must be from the outer boundaries of the section

Operator The Wiser Oil Company			Lease Phillips "B" State		Well No. 16
Unit Letter B	Section 19	Township 17 South	Range 33 East	County NM/M Lea	
Actual Footage Location of Well: 1305 feet from the North line and 1335 feet from the East line					
Ground level Elev. 4176	Producing Formation Grayburg & San Andres		Pool Maljamar Grayburg San Andres	Dedicated Acreage: 40 Acres	

- Outline the acreage dedicated to the subject well by colored pencil or hatchure marks on the plat below.
- If more than one lease is dedicated to the well, outline each and identify the ownership thereof (both as to working interest and royalty).
- If more than one lease of different ownership is dedicated to the well, have the interest of all owners been consolidated by communization, unitization, force-pooling, etc.?
☐ Yes ☐ No If answer is "yes" type of consolidation _____
If answer is "no" list the owners and tract descriptions which have actually been consolidated. (Use reverse side of this form if necessary.) _____
No allowable will be assigned to the well until all interests have been consolidated (by communization, unitization, forced-pooling, or otherwise) or until a non-standard unit, eliminating such interest, has been approved by the Division.



OPERATOR CERTIFICATION

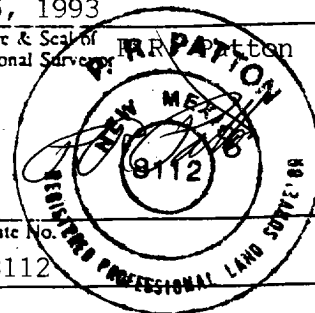
I hereby certify that the information contained herein is true and complete to the best of my knowledge and belief.

Signature
Perry L. Hughes
Printed Name
PERRY L. HUGHES
Position
AGENT
Company
THE WISER OIL CO.
Date
5/18/93

SURVEYOR CERTIFICATION

I hereby certify that the well location shown on this plat was plotted from field notes of actual surveys made by me or under my supervision, and that the same is true and correct to the best of my knowledge and belief.

Date Surveyed
May 5, 1993
Signature & Seal of Professional Surveyor
[Signature]
Certificate No.
8112



00D HOBBS

1. *Phragmites australis* (Cav.) Trin. ex Steud.
 2. *Phragmites australis* (Cav.) Trin. ex Steud.
 3. *Phragmites australis* (Cav.) Trin. ex Steud.
 4. *Phragmites australis* (Cav.) Trin. ex Steud.
 5. *Phragmites australis* (Cav.) Trin. ex Steud.
 6. *Phragmites australis* (Cav.) Trin. ex Steud.
 7. *Phragmites australis* (Cav.) Trin. ex Steud.
 8. *Phragmites australis* (Cav.) Trin. ex Steud.
 9. *Phragmites australis* (Cav.) Trin. ex Steud.
 10. *Phragmites australis* (Cav.) Trin. ex Steud.