

N. M. OIL CONS. COMMISSION  
P. O. BOX 198  
HOBBS, NEW MEXICO 88240

CONTACT RECEIVED  
OFFICE FOR NUMBER  
OF COPIES REQUIRED  
(Other instructions on  
reverse side)

30-025-32087  
BLM Roswell District  
Modified Form No.  
NM60-3160-2

Form 3160-3  
(July 1989)  
(formerly 9-331C)

UNITED STATES  
DEPARTMENT OF THE INTERIOR  
BUREAU OF LAND MANAGEMENT

APPLICATION FOR PERMIT TO DRILL, DEEPEN, OR PLUG BACK

1a. TYPE OF WORK DRILL <input checked="" type="checkbox"/> DEEPEN <input type="checkbox"/> PLUG BACK <input type="checkbox"/>		5. LEASE DESIGNATION AND SERIAL NO. 8910088480 LC 059576	
b. TYPE OF WELL OIL WELL <input type="checkbox"/> GAS WELL <input type="checkbox"/> OTHER <input checked="" type="checkbox"/> INJECTION WELL <input type="checkbox"/> SINGLE ZONE <input checked="" type="checkbox"/> MULTIPLE ZONE <input type="checkbox"/>		6. IF INDIAN, ALLOTTEE OR TRIBE NAME	
2. NAME OF OPERATOR THE WISER OIL COMPANY		7. UNIT AGREEMENT NAME MALJAMAR GRAYBURG UNIT	
3. ADDRESS OF OPERATOR PO BOX 1412, ARTESIA NM 88211-1412		8. FARM OR LEASE NAME	
4. LOCATION OF WELL (Report location clearly and in accordance with any State requirements.) At surface 2140' FSL & 1674' FEL, Unit J At proposed prod. zone		9. WELL NO. 150	
14. DISTANCE IN MILES AND DIRECTION FROM NEAREST TOWN OR POST OFFICE* ONE MILE NORTHEAST OF MALJAMAR, NM		10. FIELD AND POOL, OR WILDCAT MALJAMAR GRAYBURG SAN ANDRES	
15. DISTANCE FROM PROPOSED* LOCATION TO NEAREST PROPERTY OR LEASE LINE, FT. (Also to nearest drlg. unit line, if any) 1674'		11. SEC., T., R., M., OR BLK. AND SURVEY OR AREA 3-17S-32E	
16. NO. OF ACRES IN LEASE 3280		12. COUNTY OR PARISH LEA	
17. NO. OF ACRES ASSIGNED TO THIS WELL 40		13. STATE NM	
18. DISTANCE FROM PROPOSED LOCATION* TO NEAREST WELL, DRILLING, COMPLETED, OR APPLIED FOR, ON THIS LEASE, FT. 918'		20. ROTARY OR CABLE TOOLS ROTARY	
21. ELEVATIONS (Show whether DF, RT, GR, etc.) 4278' GR		22. APPROX. DATE WORK WILL START* 05/17/93	

PROPOSED CASING AND CEMENTING PROGRAM

HOLE SIZE	CASING SIZE	WEIGHT/FOOT	GRADE	THREAD TYPE	SETTING DEPTH	QUANTITY OF CEMENT
12-1/4"	8-5/8"	24#	J-55	8 R	400'	Circulate
7-7/8"	5-1/2"	17#	K-55	8 R	4425'	Sufficient to bring top of cmt to base of salt. (See strips) top 525

Mud Program:

0 - 400' Drill with fresh water  
400 - 4425' Drill with brine water

BOP Program:

Will install on the 8-5/8" surface casing a 10" Series 900 Type "E" Shaffer Double Hydraulic BOP and will test before drilling in the Queen formation.

IN ABOVE SPACE DESCRIBE PROPOSED PROGRAM: If proposal is to deepen or plug back, give data on present productive zone and proposed new productive zone. If proposal is to drill or deepen directionally, give pertinent data on subsurface locations and measured and true vertical depths. Give blowout preventer program, if any.

24.

SIGNED Kerry L. Hughes TITLE AGENT DATE 4/23/93

(This space for Federal or State office use)

PERMIT NO.

APPROVAL DATE

APPROVED BY

Ron Dunton

TITLE

AREA MANAGER

DATE

JUN 28 1993

CONDITIONS OF APPROVAL, IF ANY:  
SUBJECT TO  
GENERAL REQUIREMENTS AND  
SPECIAL STIPULATIONS  
ATTACHED

\*See Instructions On Reverse Side

16 U.S.C. Section 1001, makes it a crime for any person knowingly and willfully to make to any department or agency of the

RECEIVED

JUL 06 1993

W. HOBBS  
OFFICE

## APPLICATION FOR DRILLING

THE WISER OIL COMPANY  
MALJAMAR GRAYBURG UNIT WELL NO. ~~7-X~~ 150  
2140' FSL & 1674' FEL, UNIT J  
SECTION 3, TOWNSHIP 17 SOUTH, RANGE 32 EAST  
LEA COUNTY, NEW MEXICO  
LEASE NO. 8910088480

In connection with Form 3160-3, Application for Permit to Drill subject well, The Wisser Oil Company submits the following items of pertinent information in accordance with BLM requirements:

1. The geological surface formation is recent Permian with quaternary alluvium and other surficial deposits.
2. The estimated tops of geological markers are as follows:

Rustler Anhydrite	1170'
Top of Salt	1400'
Base of Salt	2300'
Queen	3455'
Grayburg	3880'
San Andres	4210'
T.D.	4425'

3. The estimated depths at which water, oil or gas formations are anticipated to be encountered:

Water: There is little, if any, fresh water in this section.

Oil: Grayburg and San Andres below 3900'.

Gas: None anticipated.

4. Proposed Casing Program: See Form 3160-3.
5. Proposed Control Equipment: See Form 3160-3.
6. Mud Program: See Form 3160-3.
7. Auxiliary Equipment: Blowout preventer, gas detector, kelly cock, pit level monitor, flow sensors and stabbing valve.
8. Testing, Logging and Coring Programs:

Drill Stem Tests: None planned.

Logging: GR-DLL-MSFL-Cal T.D. - 2300'  
GR-CNL-CDL-Cal T.D. - Surface

Coring: None planned.

**RECEIVED**

JUL 06 1993

U.S. HOUSE  
OF REPRESENTATIVES

APPLICATION FOR DRILLING  
Maljamar Grayburg Unit #7-X  
Page 2

9. No abnormal pressures or temperatures are anticipated. In the event abnormal pressures are encountered, the proposed mud program will be modified to increase the mud weight.

**RECEIVED**

JUL 06 1993

JOHN HODGES  
OFFICE

# OIL CONSERVATION DIVISION

**DISTRICT I**  
P.O. Box 1980, Hobbs, NM 88240

P.O. Box 2088

Santa Fe, New Mexico 87504-2088

**DISTRICT II**  
P.O. Drawer DD, Artesia, NM 88210

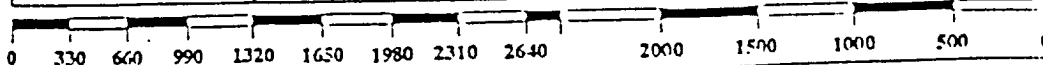
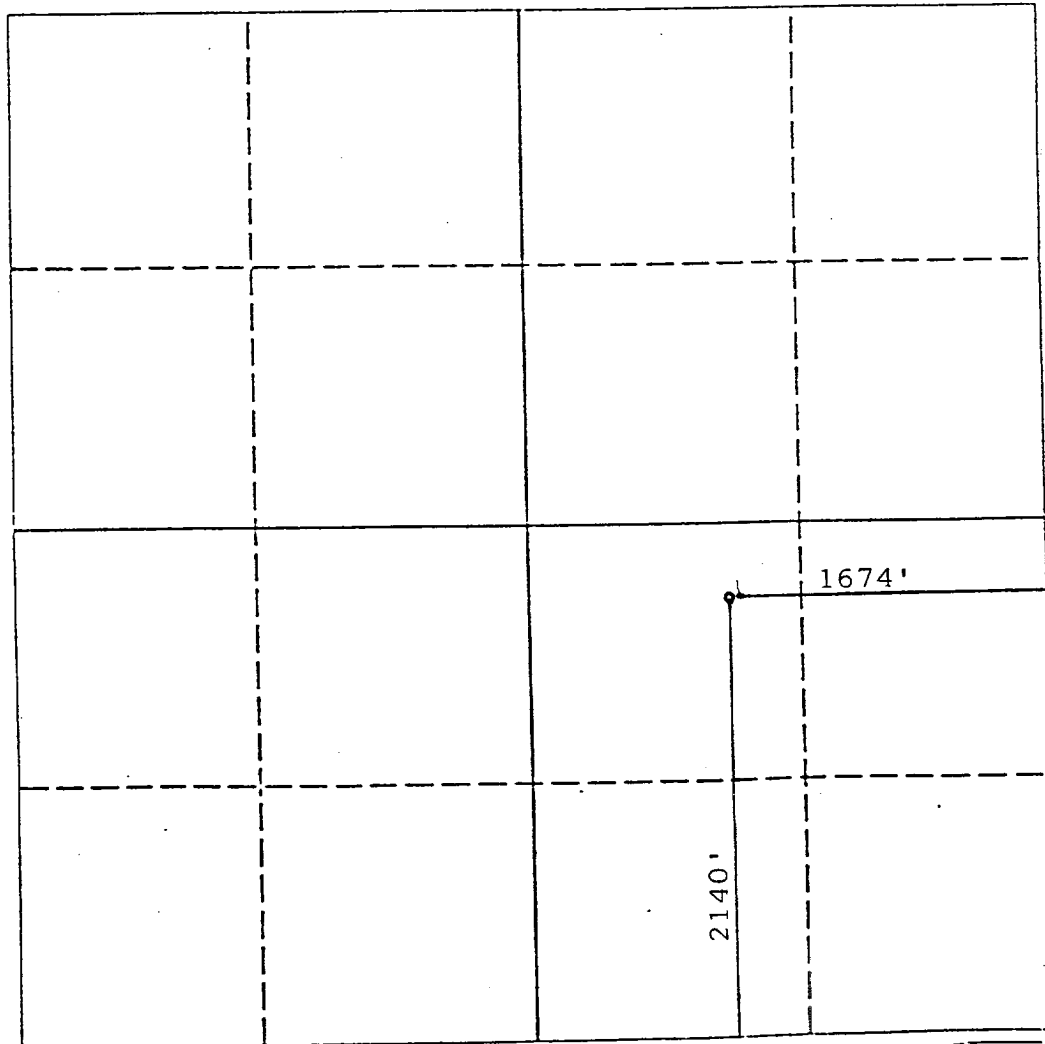
**DISTRICT III**  
1000 Rio Brazos Rd., Aztec, NM 87410

## WELL LOCATION AND ACREAGE DEDICATION PLAT

All Distances must be from the outer boundaries of the section

Operator <b>The Wiser Oil Company</b>			Lease <b>Maljamar Grayburg Unit</b>		Well No. <b>72X 150</b>
Unit Letter <b>J</b>	Section <b>3</b>	Township <b>17 South</b>	Range <b>32 East</b>	County <b>Lea</b>	
Actual Footage Location of Well: <b>2140</b> feet from the <b>South</b> line and <b>1674</b> feet from the <b>East</b> line					
Ground level Elev. <b>4278</b>	Producing Formation <b>Grayburg &amp; San Andres</b>		Pool <b>Maljamar Grayburg San Andres</b>		Dedicated Acreage: <b>40</b> Acres

- Outline the acreage dedicated to the subject well by colored pencil or hatchure marks on the plat below.
- If more than one lease is dedicated to the well, outline each and identify the ownership thereof (both as to working interest and royalty).
- If more than one lease of different ownership is dedicated to the well, have the interest of all owners been consolidated by communization, unitization, force-pooling, etc.?  
☐ Yes ☐ No If answer is "yes" type of consolidation \_\_\_\_\_  
If answer is "no" list the owners and tract descriptions which have actually been consolidated. (Use reverse side of this form if necessary.) \_\_\_\_\_  
No allowable will be assigned to the well until all interests have been consolidated (by communization, unitization, forced-pooling, or otherwise) or until a non-standard unit, eliminating such interest, has been approved by the Division.



### OPERATOR CERTIFICATION

I hereby certify that the information contained herein is true and complete to the best of my knowledge and belief.

Signature  
*Perry L. Hughes*

Printed Name  
**Perry L. Hughes**

Position  
**AGENT**

Company  
**THE WISER OIL CO.**

Date  
**4/14/93**

### SURVEYOR CERTIFICATION

I hereby certify that the well location shown on this plat was plotted from field notes of actual surveys made by me or under my supervision, and that the same is true and correct to the best of my knowledge and belief.

Date Surveyed  
**March 1993**

Signature & Seal of Professional Surveyor

**P. NEW MEXICO**

**8112**

Professional Land Surveyor

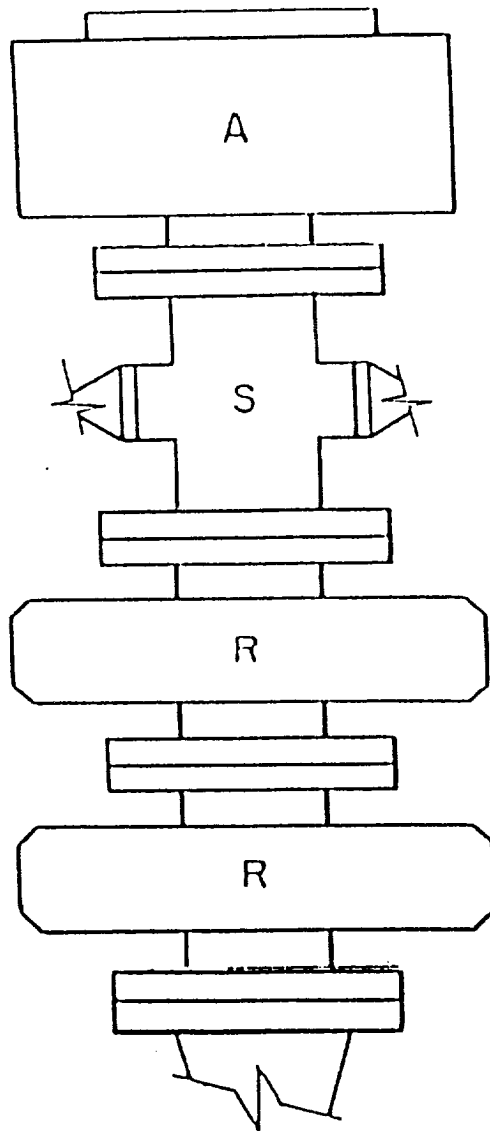
8112

**RECEIVED**

**JUL 06 1993**

**JCD HOBBS  
OFFICE**





A - Stripping Rubber

R - Blind and Pipe  
Rams

EXHIBIT "D"

The Wiser Oil Company  
Maljamar Grayburg Unit #2-X  
BOP Diagram 150

RECEIVED

JUL 06 1993

ACD HONOLULU  
OFFICE