

N.M. OIL CONS. COMMISSION
P.O. BOX 1 ()
HOBBS, NEW MEXICO 88240

Form 3160-3
 (July 1989)
 (formerly 9-331C)

CONTACT RECEIVING
 OFFICE FOR NUMBER
 OF COPIES REQUIRED
 (Other instructions on
 reverse side)

3D-025-32201

BLM Roswell District
 Modified Form No.
 NM60-3160-2

UNITED STATES
DEPARTMENT OF THE INTERIOR
BUREAU OF LAND MANAGEMENT

APPLICATION FOR PERMIT TO DRILL, DEEPEN, OR PLUG BACK

1a. TYPE OF WORK
 DRILL ☒ DEEPEN ☐ PLUG BACK ☐

b. TYPE OF WELL
 OIL WELL ☒ GAS WELL ☐ OTHER ☐ SINGLE ZONE ☐ MULTIPLE ZONE ☐

2. NAME OF OPERATOR
 The Wiser Oil Company

3a. Area Code & Phone No.
 505/748-3352

3. ADDRESS OF OPERATOR
 PO Box 1412, Artesia, NM 88211-1412

4. LOCATION OF WELL (Report location clearly and in accordance with any State requirements.)
 At surface
 1305' FNL & 1336' FEL, Unit B
 At proposed prod. zone

14. DISTANCE IN MILES AND DIRECTION FROM NEAREST TOWN OR POST OFFICE*
 3.6 miles SE of Maljamar, NM

15. DISTANCE FROM PROPOSED* LOCATION TO NEAREST PROPERTY OR LEASE LINE, FT. (Also to nearest drlg. unit line, if any)
 1305'

16. NO. OF ACRES IN LEASE
 480

17. NO. OF ACRES ASSIGNED TO THIS WELL
 40

18. DISTANCE FROM PROPOSED LOCATION* TO NEAREST WELL, DRILLING, COMPLETED, OR APPLIED FOR, ON THIS LEASE, FT.
 900'

19. PROPOSED DEPTH
 5900'

20. ROTARY OR CABLE TOOLS
 Rotary

21. ELEVATIONS (Show whether DF, RT, GR, etc.)
 4087' GR

22. APPROX. DATE WORK WILL START*
 July 15, 1993

5. LEASE DESIGNATION AND SERIAL NO.
 LC 059152B

6. IF INDIAN, ALLOTTEE OR TRIBE NAME

7. UNIT AGREEMENT NAME

8. FARM OR LEASE NAME
 JOHNS B-DE

9. WELL NO.
 15

10. FIELD AND POOL, OR WILDCAT
 Maljamar Grayburg San Andres

11. SEC., T., R., M., OR BLK. AND SURVEY OR AREA
 32E
 Sec. 24-T17S-R33E

12. COUNTY OR PARISH
 Lea

13. STATE
 NM

HOLE SIZE	CASING SIZE	WEIGHT/FOOT	GRADE	THREAD TYPE	SETTING DEPTH	QUANTITY OF CEMENT
12-1/4"	8-5/8"	24#	J-55	8 R	1300'	Circulate
7-7/8"	5-1/2"	17#	K-55	8 R	5900'	Sufficient to bring
						cmt thru top of salt
						Approx. 1300'

Mud Program:

0 - 1300' Drill with fresh water
 1100 - 5900' Drill with brine water

BOP Program:

Will install on the 8-5/8" surface casing a 10" Series 900 Type "E" Shaffer Double Hydraulic BOP and will test before drilling into the Queen formation.

IN ABOVE SPACE DESCRIBE PROPOSED PROGRAM: If proposal is to deepen or plug back, give data on present productive zone and proposed new productive zone. If proposal is to drill or deepen directionally, give pertinent data on subsurface locations and measured and true vertical depths. Give blowout preventer program, if any.

24. SIGNED Kerry L. Hughes TITLE Agent DATE 6/23/93

(This space for Federal or State office use)

PERMIT NO. _____ APPROVAL DATE _____

APPROVED BY (ORIG. SGD.) RICHARD L. MANUS TITLE AREA MANAGER DATE AUG 19 1993

CONDITIONS OF APPROVAL, IF ANY:

WELL LOCATION IS:

Approval

*See Instructions on Reverse Side

G&L CONSERVATION DIVISION

DISTRICT I
P.O. Box 1980, Hobbs, NM 88240

P.O. Box 2088

Santa Fe, New Mexico 87504-2088

DISTRICT II
P.O. Drawer DD, Artesia, NM 88210

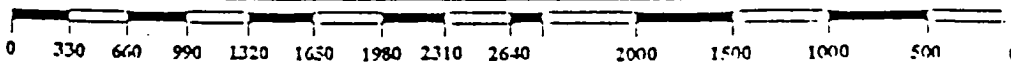
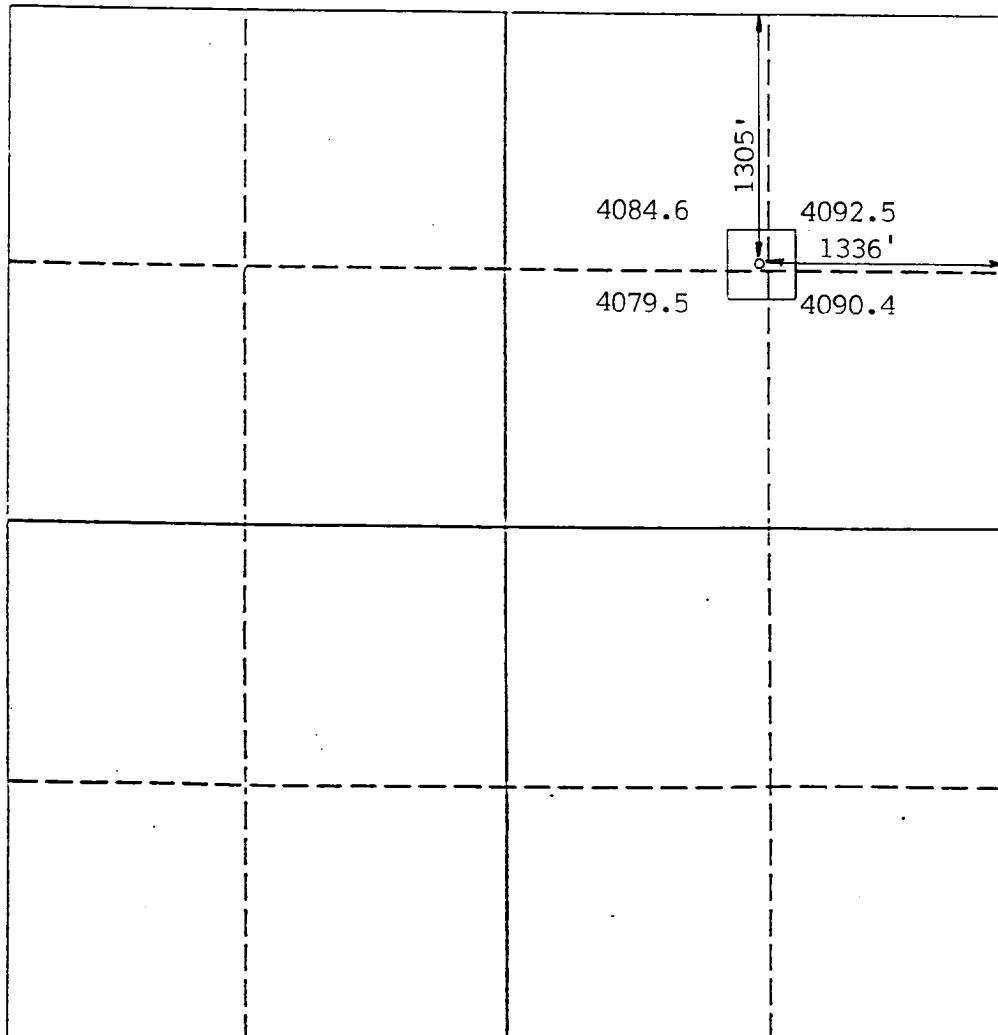
DISTRICT III
1000 Rio Brazos Rd., Aztec, NM 87410

WELL LOCATION AND ACREAGE DEDICATION PLAT

All Distances must be from the outer boundaries of the section

Operator The Wiser Oil Company			Lease Johns B-DE		Well No. 15
Unit Letter B	Section 24	Township 17 South	Range 32 East	County NM/M Lea	
Actual Footage Location of Well: 1305 feet from the North line and 1336 feet from the East line					
Ground level Elev. 4087	Producing Formation Grayburg & San Andres		Pool Maljamar Grayburg San Andres		Dedicated Acreage: 40 Acres

1. Outline the acreage dedicated to the subject well by colored pencil or hatchure marks on the plat below.
2. If more than one lease is dedicated to the well, outline each and identify the ownership thereof (both as to working interest and royalty).
3. If more than one lease of different ownership is dedicated to the well, have the interest of all owners been consolidated by communization, unitization, force-pooling, etc?
☐ Yes ☐ No If answer is "yes" type of consolidation _____
If answer is "no" list the owners and tract descriptions which have actually been consolidated. (Use reverse side of this form if necessary.) _____
No allowable will be assigned to the well until all interests have been consolidated (by communization, unitization, forced-pooling, or otherwise) or until a non-standard unit, eliminating such interest, has been approved by the Division.



OPERATOR CERTIFICATION

I hereby certify that the information contained herein is true and complete to the best of my knowledge and belief.

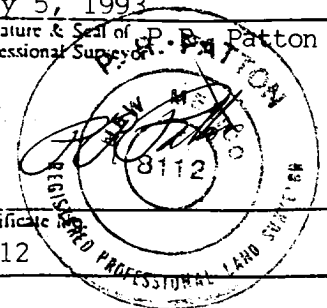
Signature: Perry L. Hughes
Printed Name: PERRY L. HUGHES
Position: AGENT
Company: THE WISER OIL CO.
Date: 5/18/93

SURVEYOR CERTIFICATION

I hereby certify that the well location shown on this plat was plotted from field notes of actual surveys made by me or under my supervision, and that the same is true and correct to the best of my knowledge and belief.

Date Surveyed: May 5, 1993
Signature & Seal of Professional Surveyor: P. B. Patton

Certificate: 8112



APPLICATION FOR DRILLING

THE WISER OIL COMPANY
JOHNS B-DE WELL NO. 15
1305' FNL & 1336' FEL, UNIT B
SECTION 24, TOWNSHIP 17 SOUTH, RANGE 33 EAST
LEA COUNTY, NEW MEXICO
LEASE NO. LC059152B

In connection with Form 3160-3, Application for Permit to Drill subject well, The Wisser Oil Company submits the following items of pertinent information in accordance with BLM requirements:

1. The geological surface formation is recent Permian with quaternary alluvium and other surficial deposits.
2. The estimated tops of geological markers are as follows:

Rustler Anhydrite	1120'
Top of Salt	1300'
Base of Salt	2170'
Queen	3450'
Grayburg	3910'
San Andres	4225'
T.D.	5900'

3. The estimated depths at which water, oil or gas formations are anticipated to be encountered:

Water: There is little, if any, fresh water in this section.

Oil: Grayburg and San Andres below 3900'.

Gas: None anticipated.

4. Proposed Casing Program: See Form 3160-3.
5. Proposed Control Equipment: See Form 3160-3.
6. Mud Program: See Form 3160-3.
7. Auxiliary Equipment: Blowout preventer, gas detector, kelly cock, pit level monitor, flow sensors and stabbing valve.
8. Testing, Logging and Coring Programs:

Drill Stem Tests: None planned.

Logging: GR-DLL-MSFL-Cal T.D. - 2300'
GR-CNL-CDL-Cal T.D. - Surface

Coring: None planned.

APPLICATION FOR DRILLING

Johns B-DE #15

Page 2

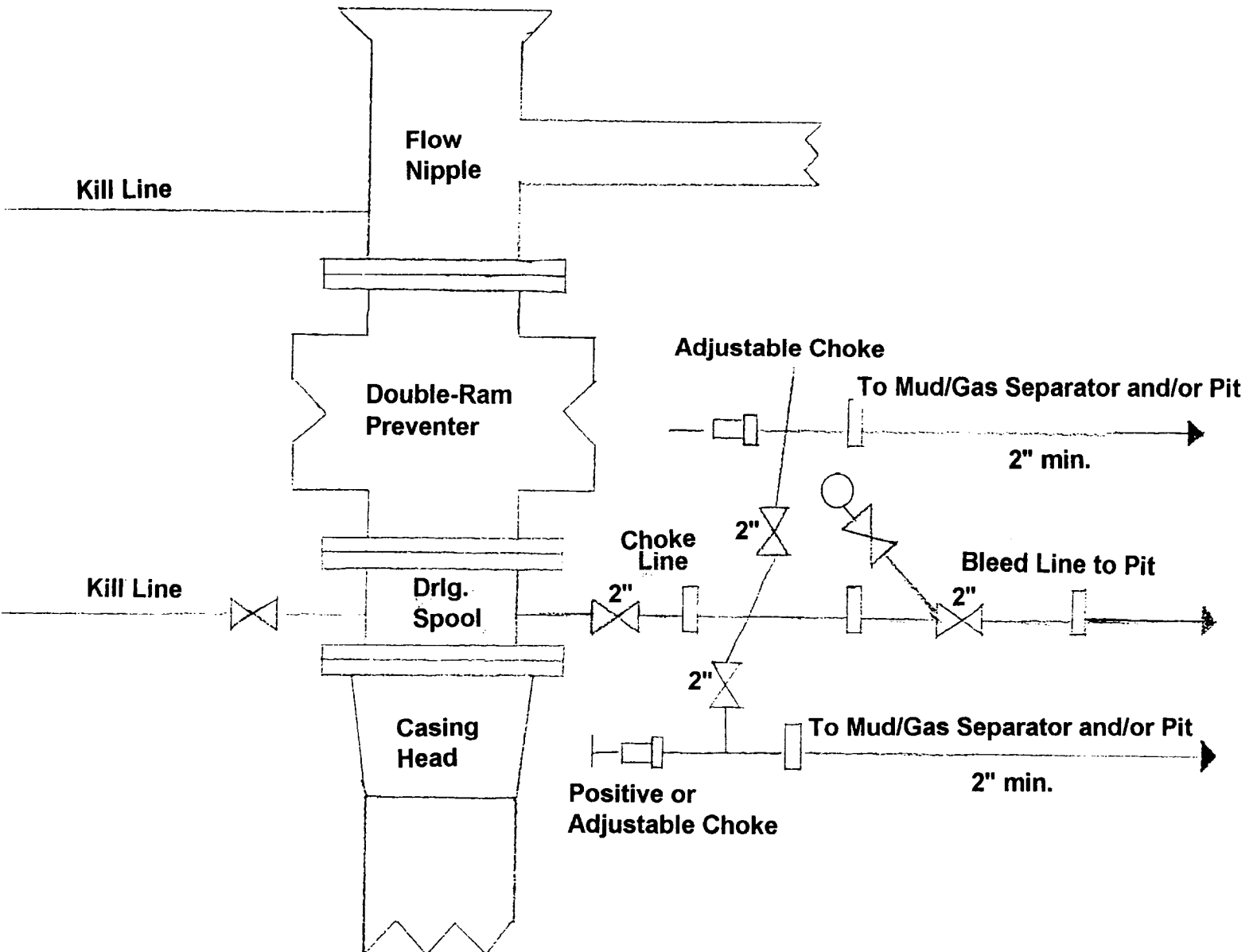
9. No abnormal pressures or temperatures are anticipated. In the event abnormal pressures are encountered, the proposed mud program will be modified to increase the mud weight.

BOP & CHOKE MANIFOLD

12"/900 Cameron SS Space Saver

3000# Working Pressure

3000# Working Pressure Choke Manifold



The Wiser Oil Company
Johns B-DE #15
1305' FNL & 1336' FEL, Unit B
Section 24 - T17S - R33E
Lea County, New Mexico