

N.M. OIL CONS. COMMISSION
P.O. BOX 1980
HOBBS, NEW MEXICO 88240

CONTACT RECEIVING
OFFICE TELEPHONE NUMBER
OF COPIES REQUIRED
(Other instructions on
reverse side)

30-225-32253

BLM Roswell District
Modified Form No.
NM60-3160-2

Form 3160-3
(July 1989)
(formerly 9-331C)

UNITED STATES
DEPARTMENT OF THE INTERIOR
BUREAU OF LAND MANAGEMENT

APPLICATION FOR PERMIT TO DRILL, DEEPEN, OR PLUG BACK

1a. TYPE OF WORK
DRILL ☒ DEEPEN ☐ PLUG BACK ☐

b. TYPE OF WELL
OIL WELL ☒ GAS WELL ☐ OTHER ☐ SINGLE ZONE ☒ MULTIPLE ZONE ☐

2. NAME OF OPERATOR
The Wiser Oil Company

3. ADDRESS OF OPERATOR
PO Box 1412, Artesia NM 88211-1412

4. LOCATION OF WELL (Report location clearly and in accordance with any State requirements.)
At surface 660' 2127'
592' FNL & 1343' FEL, Unit B
At proposed prod. zone 535'

14. DISTANCE IN MILES AND DIRECTION FROM NEAREST TOWN OR POST OFFICE*
One-half (1/2) of a mile east of Maljamar, NM

15. DISTANCE FROM PROPOSED* LOCATION TO NEAREST PROPERTY OR LEASE LINE, FT. (Also to nearest drig. unit line, if any)
1843'

16. NO. OF ACRES IN LEASE
3280

17. NO. OF ACRES ASSIGNED TO THIS WELL
40

18. DISTANCE FROM PROPOSED LOCATION* TO NEAREST WELL, DRILLING, COMPLETED, OR APPLIED FOR, ON THIS LEASE, FT.
861'

19. PROPOSED DEPTH
4400'

20. ROTARY OR CABLE TOOLS
Rotary

21. ELEVATIONS (Show whether DF, RT, GR, etc.)
4195'
4246' GR

22. APPROX. DATE WORK WILL START*
09/15/93

5. LEASE DESIGNATION AND SERIAL NO.
LC 059576

6. IF INDIAN, ALLOTTEE OR TRIBE NAME

7. UNIT AGREEMENT NAME
Maljamar Grayburg Unit

8. FARM OR LEASE NAME

9. WELL NO.
151

10. FIELD AND POOL, OR WILDCAT
Maljamar Grayburg San Andres

11. SEC., T., R., M., OR BLK. AND SURVEY OR AREA
10-17S-32E

12. COUNTY OR PARISH
Lea

13. STATE
NM

23. PROPOSED CASING AND CEMENTING PROGRAM

HOLE SIZE	CASING SIZE	WEIGHT/FOOT	GRADE	THREAD TYPE	SETTING DEPTH	QUANTITY OF CEMENT
12-1/4"	8-5/8"	24#	J-55	8 R	1150'	Circulate
7-7/8"	5-1/2"	17#	K-55	8 R	4400'	Sufficient to bring top of cmt to base of salt.

No Water Basin

see slips.

Mud Program:

0 - 1150' Drill with fresh water
1150 - 4400' Drill with brine water

BOP Program:

Will install on the 8-5/8" surface casing a 10" Series 900 Type "E" Shaffer Double Hydraulic BOP and will test before drilling in the Queen formation.

APPROVAL SUBJECT TO
GENERAL REQUIREMENTS AND
SPECIAL STIPULATIONS
ATTACHED

Aug 9 11 13 AM '93

RECEIVED

IN ABOVE SPACE DESCRIBE PROPOSED PROGRAM: If proposal is to deepen or plug back, give data on present productive zone and proposed new productive zone. If proposal is to drill or deepen directionally, give pertinent data on subsurface locations and measured and true vertical depths. Give blowout preventer program, if any.

24. SIGNED Melanie Harker TITLE Agent DATE 8/5/93

(This space for Federal or State office use)

PERMIT NO. 5-209-93 APPROVAL DATE 9-29-93

APPROVED BY Dory J. Howell TITLE AREA MANAGER DATE 9-29-93

CONDITIONS OF APPROVAL, IF ANY

RECEIVED 10/10/93

U.S. DEPARTMENT OF JUSTICE
FEDERAL BUREAU OF INVESTIGATION
WASHINGTON, D.C. 20535
OCT 10 1993

RECEIVED

OCT 01 1993

AND HOBBS
OFFICE

APPLICATION FOR DRILLING

THE WISER OIL COMPANY
MALJAMAR GRAYBURG UNIT WELL NO. 151
596' FNL & 1843' FEL, UNIT B
SECTION 10, TOWNSHIP 17 SOUTH, RANGE 32 EAST
LEA COUNTY, NEW MEXICO
LEASE NO. LC 059576

In connection with Form 3160-3, Application for Permit to Drill subject well, The Wiser Oil Company submits the following items of pertinent information in accordance with BLM requirements:

1. The geological surface formation is recent Permian with quaternary alluvium and other surficial deposits.
2. The estimated tops of geological markers are as follows:

Rustler Anhydrite	1060'
Top of Salt	1290'
Base of Salt	2220'
Queen	3350'
Grayburg	3800'
San Andres	4100'
T.D.	4400'

3. The estimated depths at which water, oil or gas formations are anticipated to be encountered:

Water: There is little, if any, fresh water in this section.

Oil: Grayburg and San Andres below 3900'.

Gas: None anticipated.

4. Proposed Casing Program: See Form 3160-3.
5. Proposed Control Equipment: See Form 3160-3.
6. Mud Program: See Form 3160-3.
7. Auxiliary Equipment: Blowout preventer, gas detector, kelly cock, pit level monitor, flow sensors and stabbing valve.
8. Testing, Logging and Coring Programs:

Drill Stem Tests: None planned.

Logging: GR-DLL-MSFL-Cal T.D. - 2300'
GR-CNL-CDL-Cal T.D. - Surface

Coring: From approximately 3950' to 4300'.

RECEIVED

SEP 01 1993

GOO HOBBS
OFFICE

APPLICATION FOR DRILLING
Maljamar Grayburg Unit #151
Page 2

9. No abnormal pressures or temperatures are anticipated. In the event abnormal pressures are encountered, the proposed mud program will be modified to increase the mud weight.

RECEIVED

OCT 01 1993

GOO HOBBS
OFFICE

BOP & CHOKE MANIFOLD

12"/900 Cameron SS Space Saver
3000# Working Pressure
3000# Working Pressure Choke Manifold

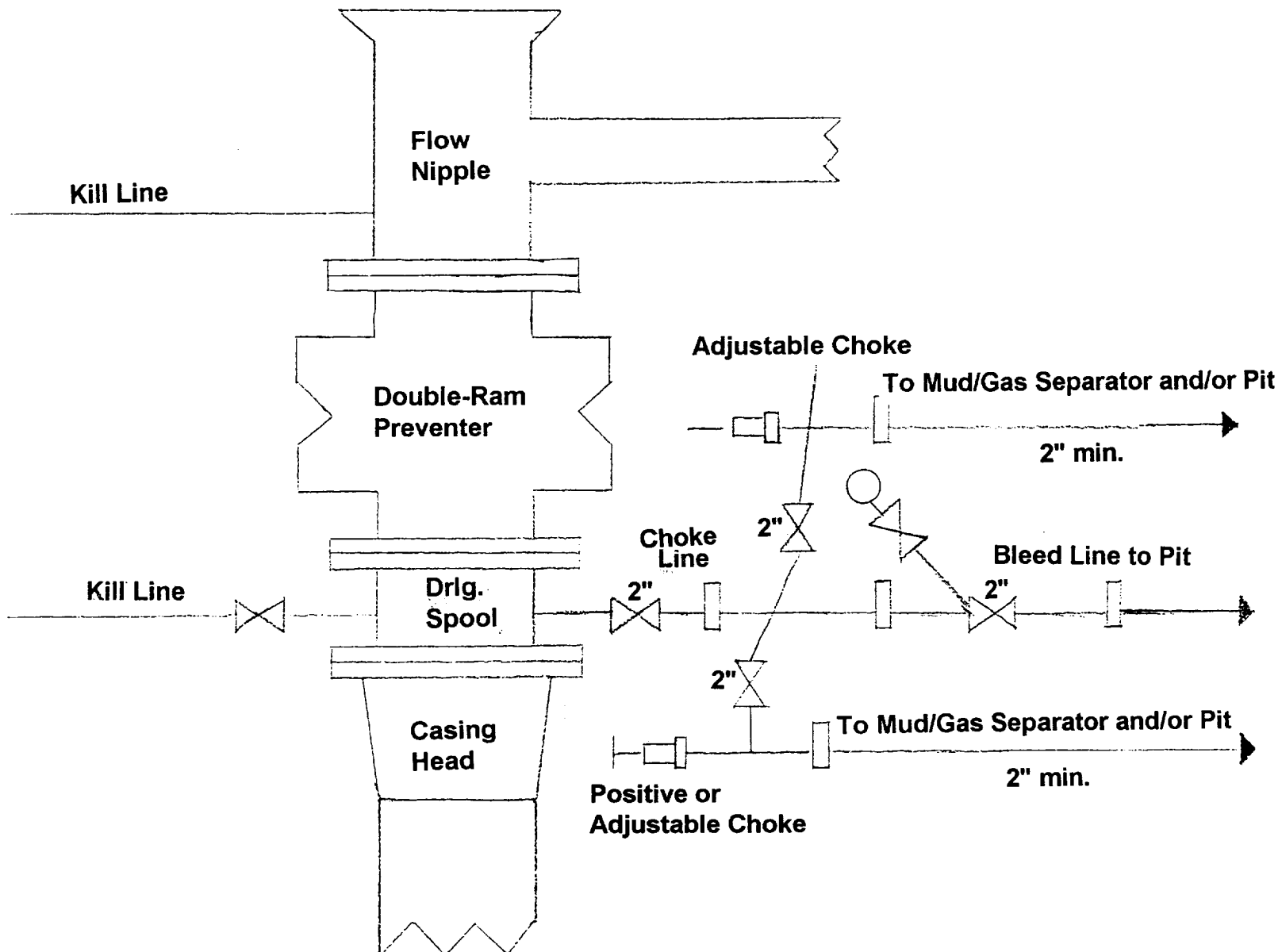


EXHIBIT "D"

The Wiser Oil Company
Maljamar Grayburg Unit #151
BOP & Choke Manifold Diagram

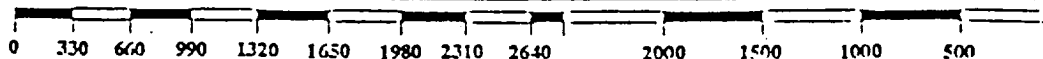
RECEIVED

JUL 01 1993

ODD HOBBS
OFFICE

All Distances must be from the outer boundaries of the section

8114



11-29-93
12-6-93
12-11-93

RECEIVED

OCT 01 1993

OCD HOBBS
OFFICE