

District I  
PO Box 1980, Hobbs, NM 88241-1980  
District II  
PO Drawer DD, Artesia, NM 88211-0719  
District III  
1000 Rio Brazos Rd., Aztec, NM 87410  
District IV  
PO Box 2088, Santa Fe, NM 87504-2088

State of New Mexico  
Energy, Minerals & Natural Resources Department

OIL CONSERVATION DIVISION  
PO Box 2088  
Santa Fe, NM 87504-2088

Form C-101  
Revised February 10, 1994  
Instructions on back  
Submit to Appropriate District Office  
State Lease - 6 Copies  
Fee Lease - 5 Copies

☐ AMENDED REPORT

APPLICATION FOR PERMIT TO DRILL, RE-ENTER, DEEPEN, PLUGBACK, OR ADD A ZONE

<sup>1</sup> Operator Name and Address. GECKO, Inc. 310 W. Wall, Suite 702-LB106 Midland, Texas 79701		<sup>2</sup> OGRID Number 25739
		<sup>3</sup> API Number 30-025-32599
<sup>4</sup> Property Code 15395	<sup>5</sup> Property Name GECKO State -26-	<sup>6</sup> Well No. 1

<sup>7</sup> Surface Location									
UL or lot no.	Section	Township	Range	Lot Idn	Feet from the	North/South line	Feet from the	East/West line	County
N	26	16S	37E		555	S	1648	W	Lea

<sup>8</sup> Proposed Bottom Hole Location If Different From Surface									
UL or lot no.	Section	Township	Range	Lot Idn	Feet from the	North/South line	Feet from the	East/West line	County
<sup>9</sup> Proposed Pool 1 Casey (STRAWN) <10310>					<sup>10</sup> Proposed Pool 2				

<sup>11</sup> Work Type Code N	<sup>12</sup> Well Type Code O	<sup>13</sup> Cable/Rotary R	<sup>14</sup> Lease Type Code S	<sup>15</sup> Ground Level Elevation 3768
<sup>16</sup> Multiple NO	<sup>17</sup> Proposed Depth 12,000'	<sup>18</sup> Formation STRAWN	<sup>19</sup> Contractor TMBR/Sharp	<sup>20</sup> Spud Date 8/8/94

<sup>21</sup> Proposed Casing and Cement Program					
Hole Size	Casing Size	Casing weight/foot	Setting Depth	Sacks of Cement	Estimated TOC
17½"	13 3/8"	48-68	450	475	circulate
12½"	9 5/8"	36-40	4,500	1400	circulate
7 7/8"	5 ½"	17	12,000	700	4500'

<sup>22</sup> Describe the proposed program. If this application is to DEEPEN or PLUG BACK give the data on the present productive zone and proposed new productive zone. Describe the blowout prevention program, if any. Use additional sheets if necessary.

"SEE ATTACHED"

Permit Expires 6 Months From Approval  
Date Unless Drilling Underway.

<sup>23</sup> I hereby certify that the information given above is true and complete to the best of my knowledge and belief. Signature: <i>Steve L. Thomson</i>		OIL CONSERVATION DIVISION	
Printed name: Steve L. Thomson		Approved by:	Orig. Signed by
Title: President		Title:	Paul Kenta Geologist
Date: July 18, 1994	Phone: (915) 686-0121	Approval Date: JUL 27 1994	Expiration Date:
		Conditions of Approval:	Attached <input type="checkbox"/>

# GECKO

310 W. WALL

SUITE 702 - LB 106

MIDLAND, TEXAS 79701

(915) 686-0121

FAX: (915) 686-0134

22. The proposed drilling program is to drill a 17½" hole to 450' with fresh water. At 450', 13 3/8" casing will be cemented back to surface. A 12 ¼" hole will be drilled to 4500' with a cut brine mud system. A 3000# annular preventer will be used on the intermediate hole. At 4500', 9 5/8" casing, will be set and cemented back to 450'. A 7 7/8" hole will be drilled to TD at 12,000' with a fresh water mud where 5 ½" casing will be set and cemented back to 4500'. A 3000# annular and a dual 5000# BOP pipe ram will be used. The rheology of the mud system will be controlled from 10,500' to TD.

Submit to Appropriate  
District Office  
State Lease-4 copies  
Fee Lease-3 copies

OIL CONSERVATION DIVISION

DISTRICT I  
P.O. Box 1980, Hobbs, NM 88240

P.O. Box 2088  
Santa Fe, New Mexico 87504-2088

DISTRICT II  
P.O. Drawer DD, Artesia, NM 88210

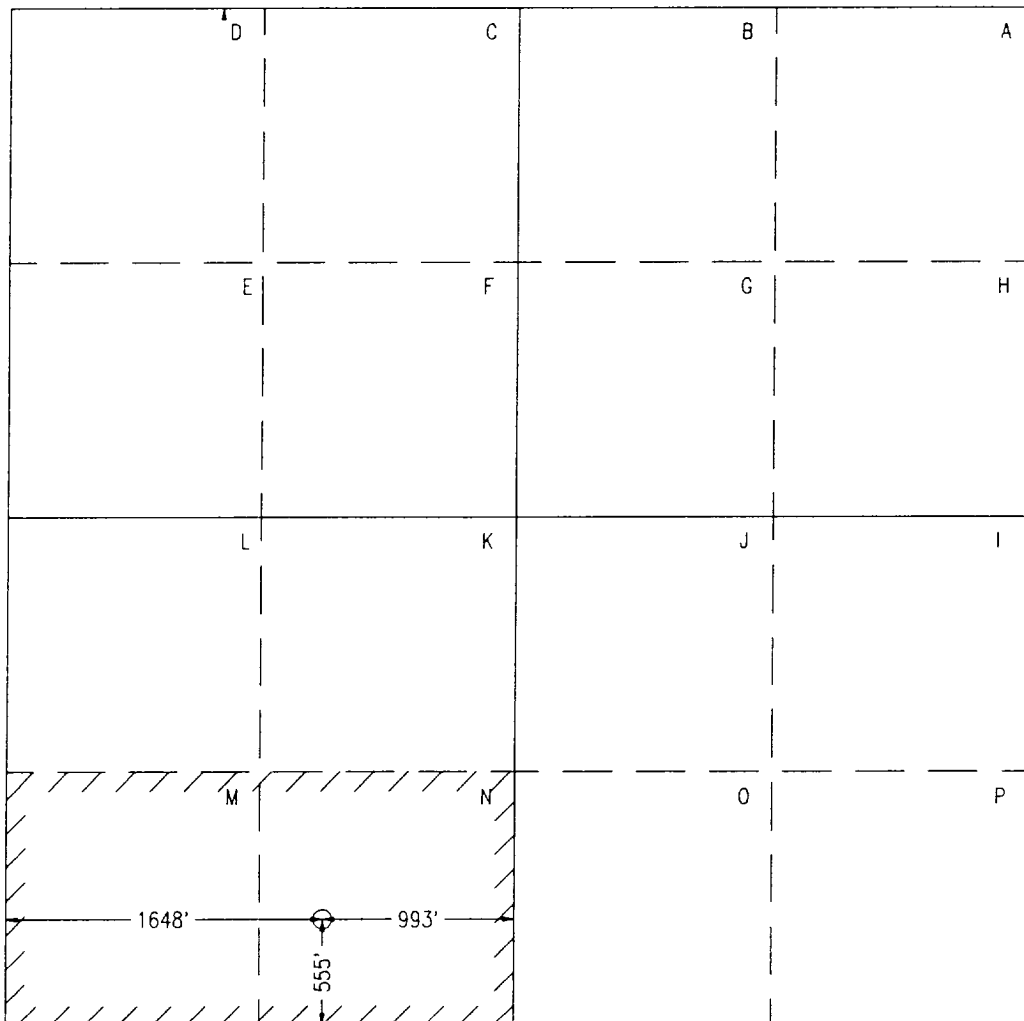
DISTRICT III  
1000 Rio Brazos Rd., Aztec, NM 87410

WELL LOCATION AND ACREAGE DEDICATION PLAT

All distances must be from the outer boundaries of the Section.

Operator GECKO, INC.			Lease GECKO State 26		Well No. 1
Unit Letter N	Section 26	Township T16S	Range R37E	County NMPM	Lea
Actual Footage Location of Well: 555 feet from the South line and 1648 feet from the West line.					
Ground level Elev. 3768	Producing Formation Strawn	Pool Casey (Strawn)		Dedicated Acreage: 80 Acres	

- Outline the acreage dedicated to the subject well by colored pencil or hachure marks on the plat below.
- If more than one lease is dedicated to the well, outline each and identify the ownership thereof (both as to working interest and royalty).
- If more than one lease of different ownership is dedicated to the well, have the interest of all owners been consolidated by communitization, unitization, force-pooling, etc?  
☐ Yes ☐ No If answer is "yes", type of consolidation \_\_\_\_\_  
If answer is "no", list the owners and tract descriptions which have actually been consolidated. (Use reverse side of this form if necessary.) \_\_\_\_\_  
No allowable will be assigned to the well until all interests have been consolidated (by communitization, unitization, forced-pooling, or otherwise) or until a non-standard unit, eliminating such interest, has been approved by the Division.



OPERATOR CERTIFICATION

I hereby certify that the information contained herein is true and complete to the best of my knowledge and belief.

Signature

*Steve L. Thomson*

Printed Name

Steve L. Thomson

Position

President

Company

GECKO, INC.

Date

7/18/94

SURVEYOR CERTIFICATION

I hereby certify that the well location shown on this plat was plotted from field notes of actual surveys made by me or under my supervision, and that the same is true and correct to the best of my knowledge and belief.

Date Surveyed

5-24-94

Signature & Seal of  
Professional Surveyor

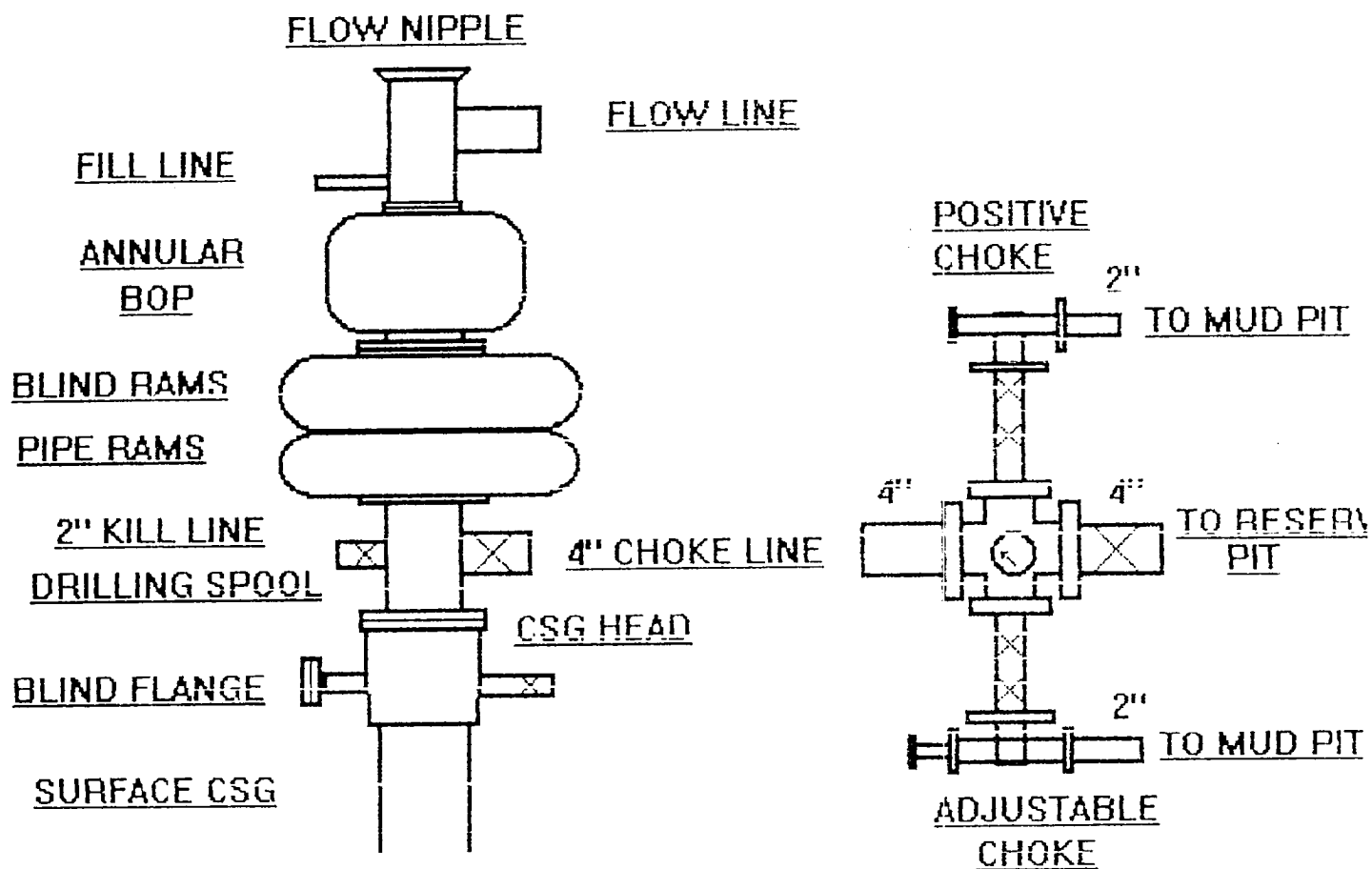
*Michael E. Stanford*  
MICHAEL E. STANFORD  
NEW MEXICO  
10324  
10324  
PROFESSIONAL LAND SURVEYOR

Certificate No.

10324

9 Miles SE of Lovington, New Mexico.

File No. A-0365



BOP AND CHOKE DIAGRAM  
GECKO, INC.