

District I  
PO Box 1980, Hobbs, NM 88241-1980  
District II  
PO Drawer DD, Artesia, NM 88211-0719  
District III  
1000 Rio Brazos Rd., Aztec, NM 87410  
District IV  
PO Box 2088, Santa Fe, NM 87504-2088

State of New Mexico  
Energy, Minerals & Natural Resources Department

OIL CONSERVATION DIVISION  
PO Box 2088  
Santa Fe, NM 87504-2088

Form C-101  
Revised February 10, 1994  
Instructions on back  
Submit to Appropriate District Office  
State Lease - 6 Copies  
Fee Lease - 5 Copies

☐ AMENDED REPORT

APPLICATION FOR PERMIT TO DRILL, RE-ENTER, DEEPEN, PLUGBACK, OR ADD A ZONE

Operator Name and Address: Harvard Petroleum Corporation P.O. Box 936 Roswell, NM 88202-0936		OGRID Number 010155
Property Code 16349	Property Name Angell	API Number 30-025-32825
		Well No. 1

UL or lot no.	Section	Township	Range	Lot Ida	Feet from the	North/South line	Feet from the	East/West line	County
B	4	15S	38E		509	North	2594	East	Lea

UL or lot no.	Section	Township	Range	Lot Ida	Feet from the	North/South line	Feet from the	East/West line	County
Proposed Bottom Hole Location If Different From Surface									
Proposed Pool 1 Pollock (Wolfcamp)									
Proposed Pool 2									

Work Type Code N	Well Type Code Q	Cable/Rotary R	Lease Type Code P	Ground Level Elevation 3760'
Multiple No	Proposed Depth 9500'	Formation Wolfcamp	Contractor Patterson	Spud Date 1-18-95

Hole Size	Casing Size	Casing weight/foot	Setting Depth	Sacks of Cement	Estimated TOC
17 1/2"	13 3/8"	48lb/ft	500'	450	Surface
12 1/4"	8 5/8"	24 & 32lb/ft	4900'	2200	Surface
7 7/8"	5 1/2"	17 & 20lb/ft	9450'	2200	4700'

Describe the proposed program. If this application is to DEEPEN or PLUG BACK give the data on the present productive zone and proposed new productive zone. Describe the blowout prevention program, if any. Use additional sheets if necessary.

Propose to drill 17 1/2" hole to 500'.  
Run & cmt. 13 3/8" csg. as shown above. Circ. cmt. to pit.  
WOC, NU & test 13 5/8" Shaffer 5000 psi RAM/RAM/Annular BOP.  
Drill 12 1/4" Hole to 4900'.  
Run & cmt. csg. as shown above. Permit expires 6 Months From Approval  
WOC, NU & test BOP. Date Unless Drilling Underway.  
Drill 7 7/8" hole to 9500'.  
Test, log & run 5 1/2" csg. as above.  
Completion to be determined.

I hereby certify that the information given above is true and complete to the best of my knowledge and belief.

Signature: *Jeff Harvard*

Printed name: Jeff Harvard

Title: Vice President

Date: 1-4-95  
Phone: (505) 623-1581

OIL CONSERVATION DIVISION

Approved by: *Paul W. Gault*  
Title: *Geologist*

Approval Date: JAN 19 1995  
Expiration Date:

Conditions of Approval:  
Attached ☐

**RECEIVED**

JAN 05 1995  
OCD HOBBS  
OFFICE

DISTRICT I  
P. O. Box 1980  
Hobbs, NM 88241-1980

State of New Mexico  
Energy, Minerals, and Natural Resources Department

Form C-102  
Revised 02-10-94

Instructions on back

Submit to the Appropriate  
District Office  
State Lease - 4 copies  
Fee Lease - 3 copies

DISTRICT II  
P. O. Drawer DD  
Artesia, NM 88211-0719

OIL CONSERVATION DIVISION  
P. O. Box 2088  
Santa Fe, New Mexico 87504-2088

☐ AMENDED REPORT

DISTRICT III  
1000 Rio Brazos Rd.  
Aztec, NM 87410

DISTRICT IV  
P. O. Box 2088  
Santa Fe, NM 87507-2088

WELL LOCATION AND ACREAGE DEDICATION PLAT

1 API Number 30-025-32825		2 Pool Code 50383		3 Pool Name Pollack (Wolfcamp)	
4 Property Code 16349		5 Property Name ANGELL			6 Well Number 1
7 OGRID No. 010155		8 Operator Name HARVARD PETROLEUM CORPORATION			9 Elevation 3760'

10 SURFACE LOCATION

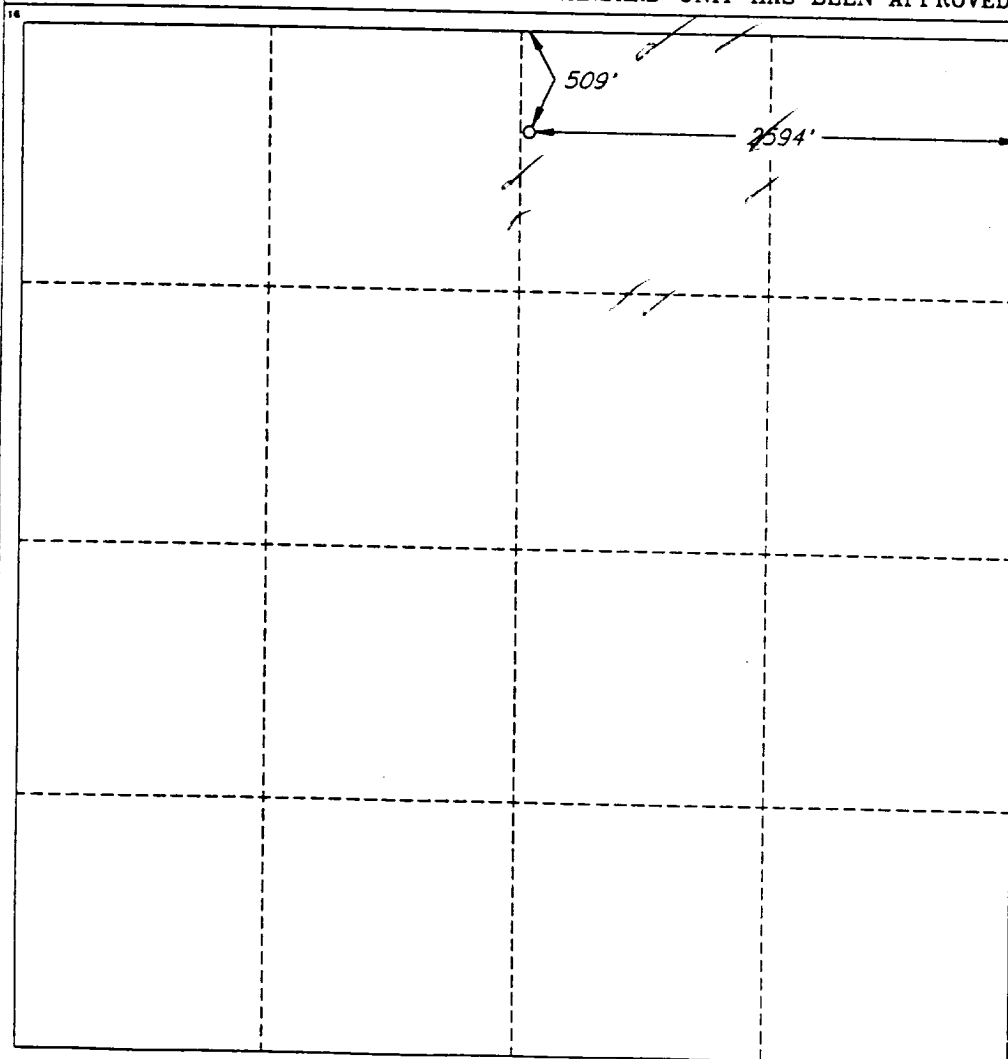
UL or lot no. B	Section 4	Township 15 SOUTH	Range 38 EAST, N.M.P.M.	Lot Ida	Feet from the 509'	North/South line NORTH	Feet from the 2594'	East/West line EAST	County LEA
--------------------	--------------	----------------------	----------------------------	---------	-----------------------	---------------------------	------------------------	------------------------	---------------

"BOTTOM HOLE LOCATION IF DIFFERENT FROM SURFACE

UL or lot no.	Section	Township	Range	Lot Ida	Feet from the	North/South line	Feet from the	East/West line	County
---------------	---------	----------	-------	---------	---------------	------------------	---------------	----------------	--------

12 Dedicated Acres 40	13 Joint or Infill	14 Consolidation Code	15 Order No.
--------------------------	--------------------	-----------------------	--------------

NO ALLOWABLE WELL BE ASSIGNED TO THIS COMPLETION UNTIL ALL INTERESTS HAVE BEEN  
CONSOLIDATED OR A NON-STANDARD UNIT HAS BEEN APPROVED BY THE DIVISION



OPERATOR CERTIFICATION

I hereby certify that the information  
contained herein is true and complete  
to the best of my knowledge and belief.

Signature

Printed Name

Jeff Harvard

Title

Vice President

Date

1-4-95

SURVEYOR CERTIFICATION

I hereby certify that the well  
location shown on this plat was  
plotted from field notes of actual  
surveys made by me or under  
my supervision, and that the  
same is true and correct to the  
best of my belief.

Date of Survey

DECEMBER 14, 1994

Signature and Seal of  
Professional Surveyor

V. LYNN  
BEZNER  
NO. 7920

Certified LAND SURVEYOR  
V. L. BEZNER P.P.S. #7920

JOB #37161 / 120 SE / C.L.S.

**RECEIVED**

APR 11 1995

JOHN HOBBS  
OFFICE