

DISTRICT I  
P.O. Box 1980, Hobbs, NM 88240

DISTRICT II  
P.O. Drawer DD, Artesia, NM 88210

DISTRICT III  
1000 Rio Brazos Rd., Aztec, NM 87410

State of New Mexico  
Energy, Minerals and Natural Resources Department

Form C-102  
Revised February 10, 1994  
Instruction on back  
Submit to Appropriate District Office  
State Lease - 4 Copies  
Fee Lease - 3 Copies

**OIL CONSERVATION DIVISION**

P.O. Box 2088  
Santa Fe, New Mexico 87504-2088

☐ AMENDED REPORT

**WELL LOCATION AND ACREAGE DEDICATION PLAT**

API Number <b>30-025-32846</b>	Pool Code <b>40875</b>	Pool Name <b>West Lovington Strawn</b>
Property Code <b>16497</b>	Property Name <b>MOBIL STATE</b>	Well Number <b>1</b>
OCRID No. <b>000671</b>	Operator Name <b>AMERIND OIL COMPANY, <del>XX</del> LIMITED</b>	Elevation <b>3994</b>

**Surface Location**

**PARTNERSHIP**

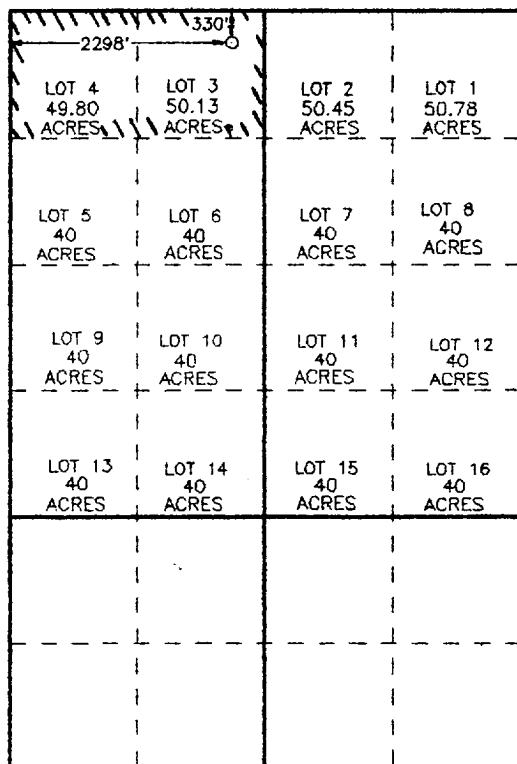
UL or lot No.	Section	Township	Range	Lot Idn	Feet from the	North/South line	Feet from the	East/West line	County
LOT 3	2	16 S	35 E		330	NORTH	2298	WEST	LEA

**Bottom Hole Location If Different From Surface**

UL or lot No.	Section	Township	Range	Lot Idn	Feet from the	North/South line	Feet from the	East/West line	County

Dedicated Acres	Joint or Infill	Consolidation Code	Order No.

**NO ALLOWABLE WILL BE ASSIGNED TO THIS COMPLETION UNTIL ALL INTERESTS HAVE BEEN CONSOLIDATED  
OR A NON-STANDARD UNIT HAS BEEN APPROVED BY THE DIVISION**



SCALE: 1"=2000'

**OPERATOR CERTIFICATION**

I hereby certify the information contained herein is true and complete to the best of my knowledge and belief.

*Robert C. Leibrock*

Signature

Robert C. Leibrock

Printed Name

General Partner

Title

January 30, 1995

Date

**SURVEYOR CERTIFICATION**

I hereby certify that the well location shown on this plat was plotted from field notes of actual surveys made by me or under my supervision, and that the same is true and correct to the best of my belief.

1995  
Date Surveyed  
Signature & Seal of Professional Surveyor  
JLP  
3-24-95  
676  
3239

RECEIVED

JUL 11 1965

U.S. DEPT. OF JUSTICE  
OFFICE