

District I
PO Box 1980, Hobbs, NM 88241-1980
District II
PO Drawer DD, Artesia, NM 88211-0719
District III
1000 Rio Brazos Rd., Aztec, NM 87410
District IV
PO Box 2088, Santa Fe, NM 87504-2088

State of New Mexico
Energy, Minerals & Natural Resources Department

OIL CONSERVATION DIVISION
PO Box 2088
Santa Fe, NM 87504-2088

Form C-101
Revised February 10, 1994
Instructions on back
Submit to Appropriate District Office
State Lease - 6 Copies
Fee Lease - 5 Copies

☐ AMENDED REPORT

APPLICATION FOR PERMIT TO DRILL, RE-ENTER, DEEPEN, PLUGBACK, OR ADD A ZONE

Operator Name and Address. GECKO, Inc. 310 W. Wall, Suite 702-LB106 Midland, Texas 79701		1 OGRID Number 025739
2 Property Code 13701	3 Property Name GECKO State -35-	4 API Number 30 - 025-32861
		5 Well No. 2

7 Surface Location

UL or lot no.	Section	Township	Range	Lot Idn	Feet from the	North/South line	Feet from the	East/West line	County
G	35	16S	37E		1874	North	1874	East	Lea

8 Proposed Bottom Hole Location If Different From Surface

UL or lot no.	Section	Township	Range	Lot Idn	Feet from the	North/South line	Feet from the	East/West line	County

9 Proposed Pool 1 Casey (Strawn) <1031D>	10 Proposed Pool 2
---	--------------------

11 Work Type Code N	12 Well Type Code O	13 Cable/Rotary R	14 Lease Type Code S	15 Ground Level Elevation 3760
16 Multiple NO	17 Proposed Depth 12,000'	18 Formation STRAWN	19 Contractor TMBR/Sharp	20 Spud Date 2/26/95

21 Proposed Casing and Cement Program

Hole Size	Casing Size	Casing weight/foot	Setting Depth	Sacks of Cement	Estimated TOC
17 1/2"	13 3/8"	54.5	450	150	Circulate
12 1/4"	9 5/8"	36	4500	1800	Circulate
7 7/8"	5 1/2"	17	12,000	400	10,000'

Describe the proposed program. If this application is to DEEPEN or PLUG BACK give the data on the present productive zone and proposed new productive zone. Describe the blowout prevention program, if any. Use additional sheets if necessary.

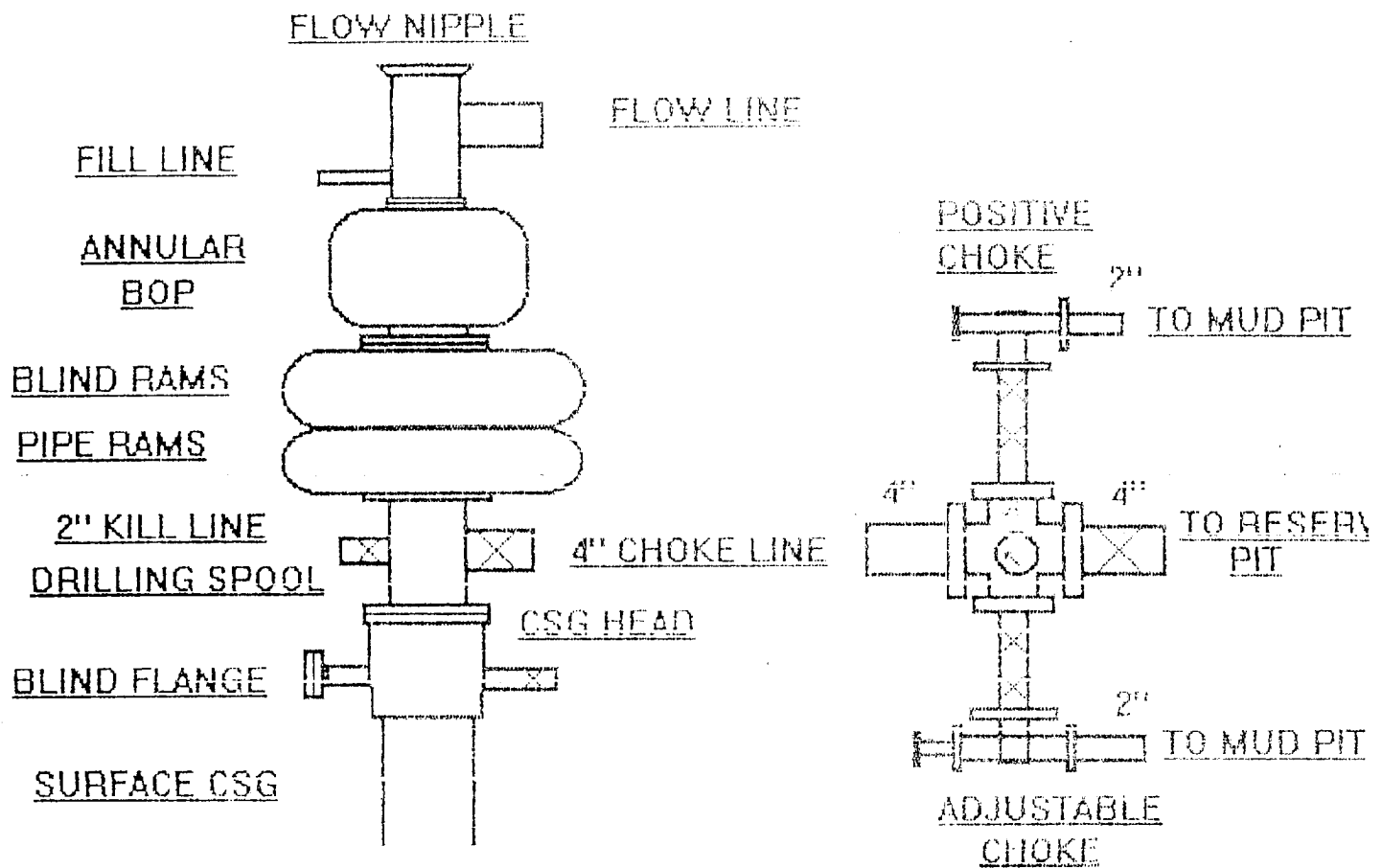
It is proposed to drill a 17 1/2" hole to 450' w/FW, set 13 3/8" csg and cement csg back to surface. An 12 1/2" intermediate hole will then be drilled to 4500' w/a cut brine mud system and a 9 5/8" csg string will be set and cemented back to the surface csg. A 3000# annular preventer will be used on the intermediate hole. A 7 7/8" hole will be drilled to TD of 12,000' w/FW mud. The 5 1/2" csg will be set @ TD and cemented back to 10,000'. A 3000# annular & a dual 5000# BOP pipe ram will be used. Mudup will occur at approximately 10,000' and several DST's are planned.

Permit Expires 6 Months From Approval
Date Unless Drilling Underway.

11 I hereby certify that the information given above is true and complete to the best of my knowledge and belief. Signature: <i>Steve L. Thomson</i>		OIL CONSERVATION DIVISION	
Printed name: Steve L. Thomson		Approved by: ORIGINAL SIGNED BY JERRY SEXTON	
Title: President		Title: DISTRICT I SUPERVISOR	
Date: 02/21-95		Approval Date: FEB 22 1995	Expiration Date:
Phone: (915) 686-0121		Conditions of Approval: Attached <input type="checkbox"/>	

RECEIVED

1950
U.S. HOUSE
OF REPRESENTATIVES



BOP AND CHOKE DIAGRAM
GECKO, INC.

Submit to Appropriate
District Office
State Lease-4 copies
Fee Lease-3 copies

State of New Mexico
Energy Minerals and Natural Resources Department

Form C-102
Revised 1-1-89

OIL CONSERVATION DIVISION

DISTRICT I
P.O. Box 1980, Hobbs, NM 88240

DISTRICT II
P.O. Drawer DD, Artesia, NM 88210

DISTRICT III
1000 Rio Brazos Rd., Aztec, NM 87410

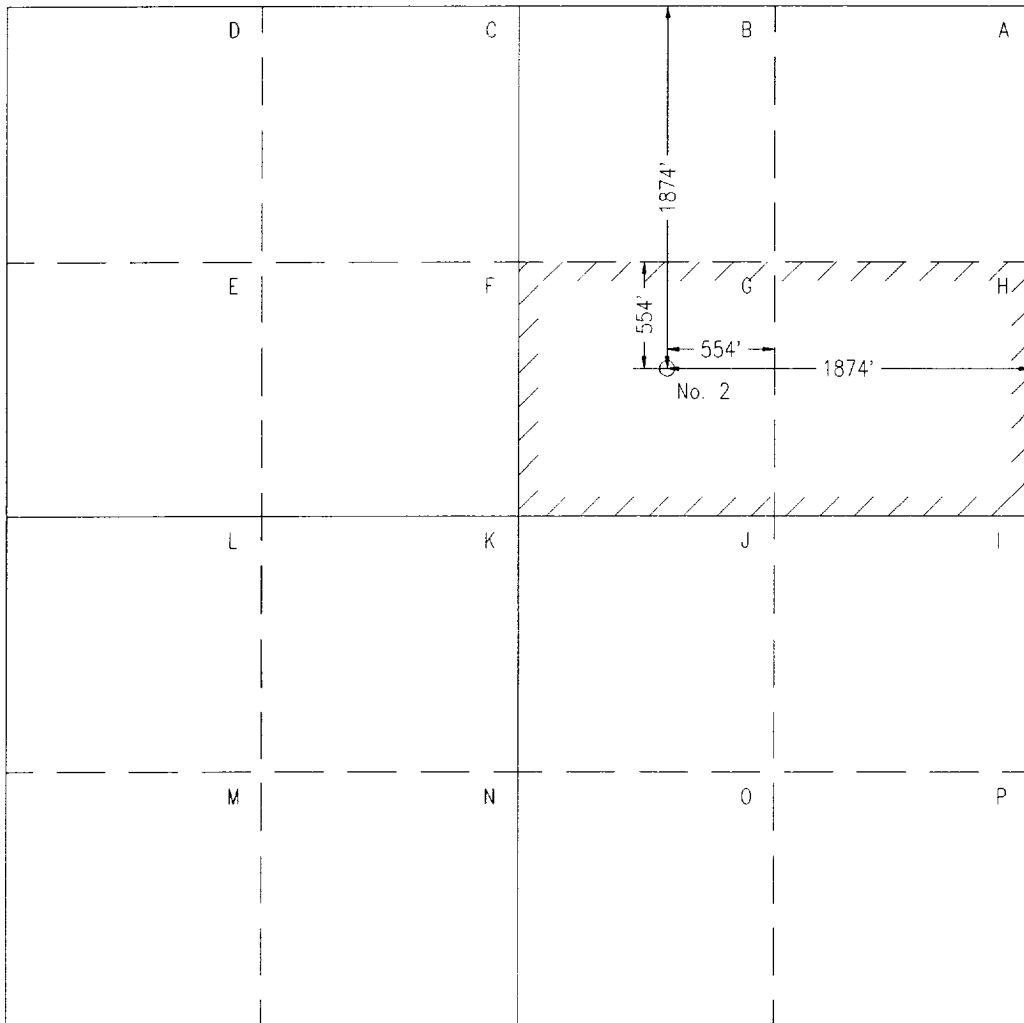
P.O. Box 2088
Santa Fe, New Mexico 87504-2088

WELL LOCATION AND ACREAGE DEDICATION PLAT

All distances must be from the outer boundaries of the Section.

Operator GECKO, INC.			Lease GECKO State 35		Well No. 2
Unit Letter G	Section 35	Township T16S	Range R37E	County Lea	
Actual Footage Location of Well: 1874 feet from the North line and 1874 feet from the East line.					
Ground level Elev. 3760	Producing Formation Strawn		Pool Casey (Strawn)		Dedicated Acreage: 80 Acres

- Outline the acreage dedicated to the subject well by colored pencil or hatchure marks on the plat below.
- If more than one lease is dedicated to the well, outline each and identify the ownership thereof (both as to working interest and royalty).
- If more than one lease of different ownership is dedicated to the well, have the interest of all owners been consolidated by communitization, unitization, force-pooling, etc.?
☐ Yes ☐ No If answer is "yes", type of consolidation _____
If answer is "no", list the owners and tract descriptions which have actually been consolidated. (Use reverse side of this form if necessary.) _____
No allowable will be assigned to the well until all interests have been consolidated (by communitization, unitization, forced-pooling, or otherwise) or until a non-standard unit, eliminating such interest, has been approved by the Division.



OPERATOR CERTIFICATION

I hereby certify that the information contained herein is true and complete to the best of my knowledge and belief.

Signature

Steve L. Thomson

Printed Name

Steve L. Thomson

Position

President

Company

GECKO, INC.

Date

February 20, 1995

SURVEYOR CERTIFICATION

I hereby certify that the well location shown on this plat was plotted from field notes of actual surveys made by me or under my supervision, and that the same is true and correct to the best of my knowledge and belief.

Date Surveyed

10-21-94

Signature & Seal of
Professional Surveyor

Michael L. Stanford
MICHAEL L. STANFORD
NEW MEXICO
REGISTERED PROFESSIONAL LAND SURVEYOR
Certificate No. 3324

0 330 660 990 1320 1650 1980 2310 2640 2000 1500 1000 500 0

9 Miles SE of Lovington, New Mexico.

File No. A-0433

N 89°35'56" E

2639.34

GECKO
35-1 (Surf)

35-1 (BHL)

Overhead Elec.

160'

Gecko State 35 No. 2
N 685812.55
E 842454.92

N 00°25'14" W

2638.89

N 89°30'36" E

2640.79

Gecko
State "36"
Well No. 2
Elev. = 3753

Terra R
State N

Sohio
36-1

GECKO
36-1