

District I
PO Box 1980, Hobbs, NM 88241-1980
District II
PO Drawer DD, Artesia, NM 88211-0719
District III
1000 Rio Brazos Rd., Aztec, NM 87410
District IV
PO Box 2088, Santa Fe, NM 87504-2088

State of New Mexico
Energy, Minerals & Natural Resources Department

OIL CONSERVATION DIVISION
PO Box 2088
Santa Fe, NM 87504-2088

Form C-101

Revised February 10, 1994

Instructions on back

Submit to Appropriate District Office

State Lease - 6 Copies

Fee Lease - 5 Copies

☐ AMENDED REPORT

APPLICATION FOR PERMIT TO DRILL, RE-ENTER, DEEPEN, PLUGBACK, OR ADD A ZONE

¹ Operator Name and Address. GECKO 310 W. Wall, Suite 702 - LB106. Midland, Texas 79701		² OGRID Number 025739
		³ API Number 30-025-33023
⁴ Property Code 17248	⁵ Property Name GECKO Wilks -28-	⁶ Well No. 1

⁷ Surface Location

UL or lot no.	Section	Township	Range	Lot Idn	Feet from the	North/South line	Feet from the	East/West line	County
H	28	15S	37E		1902	N	708	E	Lea

⁸ Proposed Bottom Hole Location If Different From Surface

UL or lot no.	Section	Township	Range	Lot Idn	Feet from the	North/South line	Feet from the	East/West line	County

⁹ Proposed Pool 1 Wildcat	¹⁰ Proposed Pool 2 Wildcat
---	--

¹¹ Work Type Code N	¹² Well Type Code O	¹³ Cable/Rotary R	¹⁴ Lease Type Code P	¹⁵ Ground Level Elevation 3798
¹⁶ Multiple No	¹⁷ Proposed Depth 12,000	¹⁸ Formation Strawn	¹⁹ Contractor TMBR/Sharp	²⁰ Spud Date 8/5/95

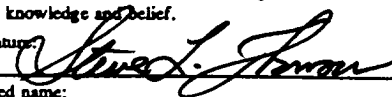
²¹ Proposed Casing and Cement Program

Hole Size	Casing Size	Casing weight/foot	Setting Depth	Sacks of Cement	Estimated TOC
17-1/2	13-3/8	54	400	425	Circulated
11	8-5/8	32	4,500	1,200	Circulated
7-7/8	5-1/2	17	12,000	500	9000'

²² Describe the proposed program. If this application is to DEEPEN or PLUG BACK give the data on the present productive zone and proposed new productive zone. Describe the blowout prevention program, if any. Use additional sheets if necessary.

See Attached

Permit Expires 6 Months From Approval
Date Unless Drilling Underway.

²³ I hereby certify that the information given above is true and complete to the best of my knowledge and belief. Signature:  Printed name: Steve L. Thomson Title: President Date: 7/5/95 Phone: (915)686-0121		OIL CONSERVATION DIVISION Approved by: ORIGINAL SIGNED BY JERRY SEXTON DISTRICT I SUPERVISOR Title: Approval Date: JUL 11 1995 Expiration Date: Conditions of Approval: Attached <input type="checkbox"/>	
--	--	--	--

U.S. DEPARTMENT OF AGRICULTURE
WASHINGTON, D. C.

JUL 11 1935

RECEIVED

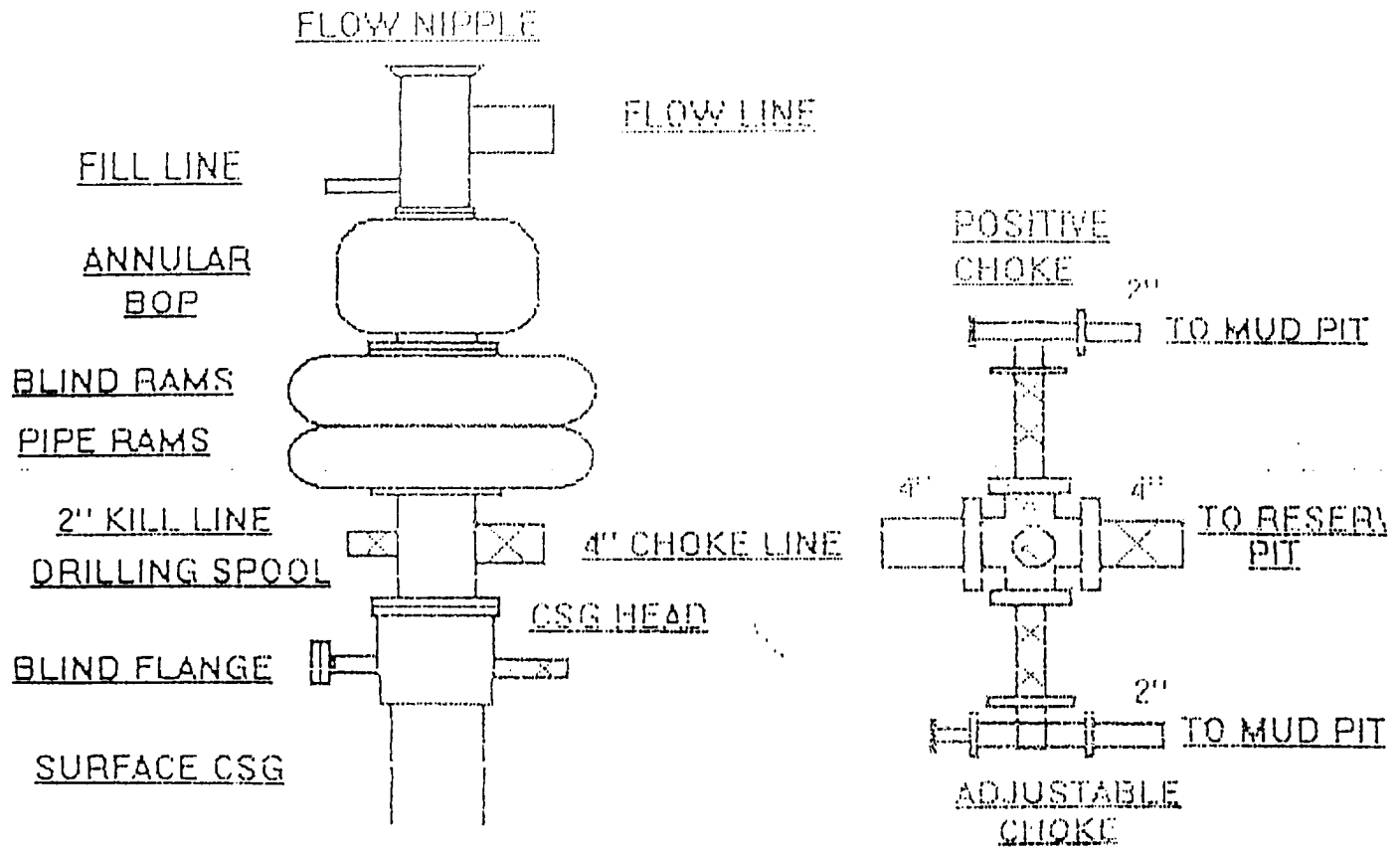
JUL 11 1935

1935

GECKO Wilks -28- No. 1
Section 20, T-15-S, R-37-E
Lea County, New Mexico

23. Proposed drilling program

Operator will drill a 17-1/2" hole to 400' with Fresh Water. At 400', operator will set 13-3/8" casing and cement same to surface. An 11" hole will be drilled from 400' to 4500' with a cut brine mud system. At 4500', and intermediate string of 8-5/8" casing will be set and cemented to surface. A 3000 psig annular preventer will be used on the intermediate hole (diagram attached). A 7-7/8" hole will be drilled from 4500' to 12,000' or a depth sufficient to test the Strawn. A fresh water mud will be utilized. A 3000 psig annular and a 5000 psig dual pipe ram BOP stack will be utilized for well control (diagram attached). Mudup will occur at +/- 10,000' or as hole conditions dictate. Drill stem testing will occur as zones of interest warrant.



BOP AND CHOKE DIAGRAM
GECKO, INC.

RECEIVED

JUL 15 1965

UCCF FILES
OFFICE

District I
PO Box 1980, Hobbs, NM 88241-1980

District II
PO Drawer DD, Artesia, NM 88211-0719

District III
1000 Rio Brasos Rd., Aztec, NM 87410

District IV
PO Box 2088, Santa Fe, NM 87504-2088

State of New Mexico
Energy, Minerals & Natural Resources Department

Form C-102
Revised February 10, 1994
Submit to Appropriate District Office
State Lease - 4 Copies
Fee Lease - 3 Copies

OIL CONSERVATION DIVISION

PO Box 2088
Santa Fe, NM 87504-2088

☐ AMENDED REPORT

WELL LOCATION AND ACREAGE DEDICATION PLAT

1 API Number 30-025-33023	2 Pool Code 96039	3 Pool Name Wildcat Strawn
4 Property Code 17248	5 Property Name GECKO WILKS	6 Well Number 1
7 GRID No. 025739	8 Operator Name GECKO	9 Elevation 3798

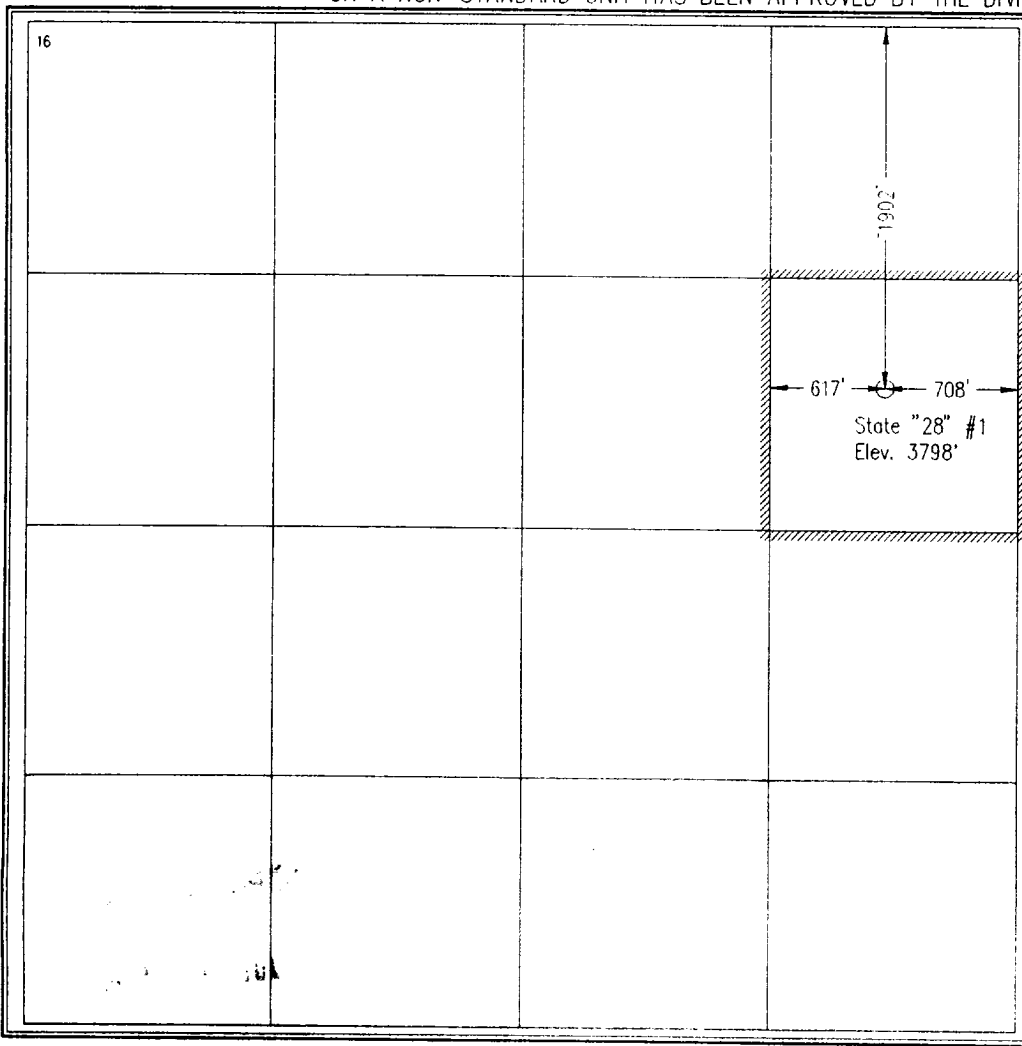
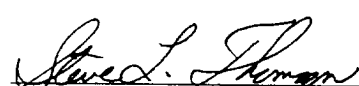


10 Surface Location

UL or lot no. H	Section 28	Township 15 S	Range 37 E	Lot Idn H	Feet from the 1902	North/South line North	Feet from the 708	East/West line East	County Lea
---------------------------	----------------------	-------------------------	----------------------	---------------------	------------------------------	----------------------------------	-----------------------------	-------------------------------	----------------------

11 Bottom Hole Location If Different From Surface

UL or lot no.	Section	Township	Range	Lot Idn	Feet from the	North/South line	Feet from the	East/West line	County
12 Dedicated Acres 40	13 Joint or Infill	14 Consolidation Code	15 Order No.						

NO ALLOWABLE WILL BE ASSIGNED TO THIS COMPLETION UNTIL ALL INTERESTS HAVE BEEN CONSOLIDATED
OR A NON-STANDARD UNIT HAS BEEN APPROVED BY THE DIVISION

16 	17 OPERATOR CERTIFICATION <i>I hereby certify that the information contained herein is true and complete to the best of my knowledge and belief.</i>  Signature Steve L. Thomson Printed Name President Title 7/5/95 Date
	18 SURVEYOR CERTIFICATION <i>I hereby certify that the well location shown on this plat was plotted from field notes of actual surveys made by me or under my supervision, and that the same is true and correct to the best of my belief.</i> June 22, 1995 Date of Survey  Signature and Seal of Professional Surveyor.  Certificate Number 10324

9 Miles E of Lovington, New Mexico.

File No. A-0508

RECEIVED

JUL 10 1995

**UCD HOBBS
OFFICE**