

Submit to Appropriate
District Office
State Lease - 4 copies
Fee Lease - 3 copies

Energy, Minerals and Natural Resources Department

Revised 1-1-89

OIL CONSERVATION DIVISION

P.O. Box 2088

Santa Fe, New Mexico 87504-2088

DISTRICT I

P.O. Box 1980, Hobbs, NM 88240

DISTRICT II

P.O. Drawer DD, Artesia, NM 88210

DISTRICT III

1000 Rio Brazos Rd., Aztec, NM 87410

WELL LOCATION AND ACREAGE DEDICATION PLAT

All Distances must be from the outer boundaries of the section

Operator The Wiser Oil Company			Lease Maljamar Grayburg Unit		Well No. 86
Unit Letter F	Section 4	Township 17 South	Range 32 East	County Lea	
Actual Footage Location of Well: 2537 feet from the North line and 2603 feet from the West line					
Ground level Elev. 4093	Producing Formation Grayburg & San Andres		Pool Maljamar Grayburg San Andres		Dedicated Acreage: 40 Acres

1. Outline the acreage dedicated to the subject well by colored pencil or hatchure marks on the plat below.

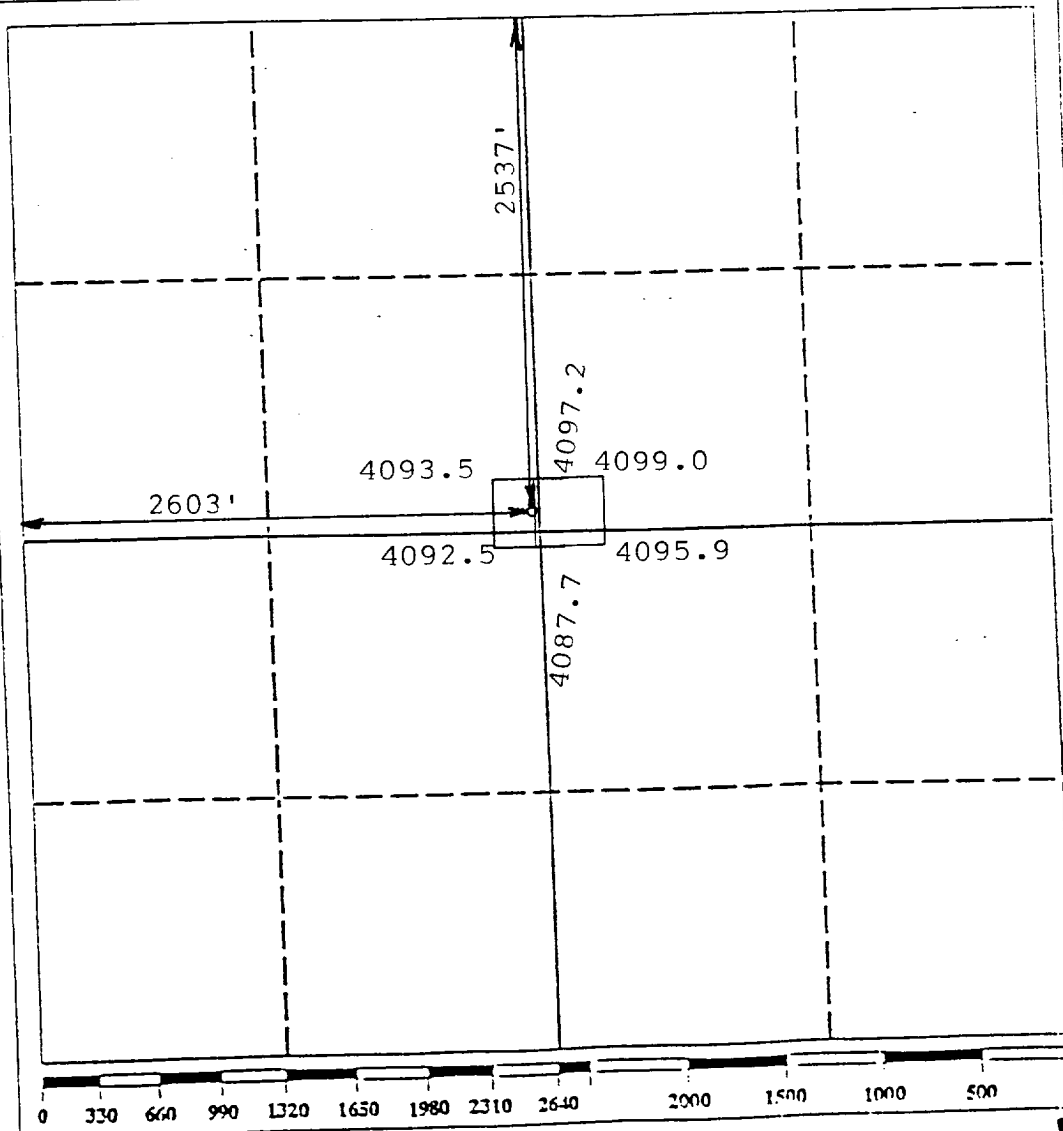
2. If more than one lease is dedicated to the well, outline each and identify the ownership thereof (both as to working interest and royalty).

3. If more than one lease of different ownership is dedicated to the well, have the interest of all owners been consolidated by communitization, unitization, force-pooling, etc.?

☐ Yes ☐ No If answer is "yes" type of consolidation

If answer is "no" list the owners and tract descriptions which have actually been consolidated. (Use reverse side of this form if necessary.)

No allowable will be assigned to the well until all interests have been consolidated (by communitization, unitization, forced-pooling, or otherwise) or until a non-standard unit, eliminating such interest, has been approved by the Division.



OPERATOR CERTIFICATION

I hereby certify that the information contained herein is true and complete to the best of my knowledge and belief.

Signature

Printed Name

Melanie J. Parker

Position

Agent

Company

The Wiser Oil Company

Date

05/02/95

SURVEYOR CERTIFICATION

I hereby certify that the well location shown on this plat was plotted from field notes of actual surveys made by me or under my supervision, and that the same is true and correct to the best of my knowledge and belief.

Date Surveyed

April 25, 1995

Signature & Seal of P. R. Patton
Professional Surveyor

Certificate No.
8112

RECEIVED MAY - 2 1995

RECEIVED

JUL 19 1995

U C D HOBBS
OFFICE