

UNITED STATES
DEPARTMENT OF THE INTERIOR
BUREAU OF LAND MANAGEMENT

APPLICATION FOR PERMIT TO DRILL OR DEEPEN

1a. TYPE OF WORK

DRILL ☒

DEEPEN ☐

b. TYPE OF WELL

OIL WELL ☒

GAS WELL ☐

OTHER ☐

SINGLE ZONE ☒

MULTIPLE ZONE ☐

2. NAME OF OPERATOR

The Wiser Oil Company

3. ADDRESS AND TELEPHONE NO.

207 W. McKay, Carlsbad, NM 88220 505/885-5433

4. LOCATION OF WELL (Report location clearly and in accordance with any State requirements.)

At surface

1534' FNL & 1372' FWL, Unit E

At proposed prod. zone

NON-STANDARD LOCATION...

SUBJECT TO
LIKE APPROVAL
BY STATE

14. DISTANCE IN MILES AND DIRECTION FROM NEAREST TOWN OR POST OFFICE*

Approx 1/4 mile South-southeast of Maljamar

15. DISTANCE FROM PROPOSED* LOCATION TO NEAREST PROPERTY OR LEASE LINE, FT. (Also to nearest drlg. unit line, if any)

3900'

16. NO. OF ACRES IN LEASE

3280

17. NO. OF ACRES ASSIGNED TO THIS WELL

40

18. DISTANCE FROM PROPOSED LOCATION* TO NEAREST WELL, DRILLING, COMPLETED, OR APPLIED FOR, ON THIS LEASE, FT.

945'

19. PROPOSED DEPTH

4400'

20. ROTARY OR CABLE TOOLS

Rotary

21. ELEVATIONS (Show whether DF, RT, GR, etc.)

4081 GR

22. APPROX. DATE WORK WILL START*

6/1/95

23. PROPOSED CASING AND CEMENTING PROGRAM

SIZE OF HOLE	GRADE, SIZE OF CASING	WEIGHT PER FOOT	SETTING DEPTH	QUANTITY OF CEMENT
12-1/4	8-5/8 J-55	24#	1200'	Circulate
7-7/8	5-1/2 J-55	17#	4400'	Sufficient to bring top of cnt to base of 8-5/8" csq

Mud Program:

0 - 1200' Drill with fresh water
400 - TD Drill with brine water

BOP Program:

Will install on the 8-5/8" surface casing a 10" Series 900 Type "E" Shaffer Double Hydraulic BOP and will test before drilling in the Queen formation.

OPER. OGRID NO. 22922
PROPERTY NO. 11844
POOL CODE 43329
EFF. DATE 7/25/95
API NO. 30-D25-33239

IN ABOVE SPACE DESCRIBE PROPOSED PROGRAM. If proposal is to deepen, give data on present productive zone and proposed new productive zone. If proposal is to drill or deepen directionally, give pertinent data on subsurface locations and measured and true vertical depths. Give blowout preventer program, if any.

24.

SIGNED

Melanie Foster

TITLE Agent

DATE 3/26/95

(This space for Federal or State office use)

PERMIT NO.

APPROVAL DATE

Application approval does not warrant or certify that the applicant holds legal or equitable title to those rights in the subject lease which would entitle the applicant to conduct operations thereon. CONDITIONS OF APPROVAL, IF ANY:

APPROVAL SUBJECT TO
GENERAL REQUIREMENTS AND
SPECIAL STIPULATIONS
ATTACHED

APPROVED BY

TITLE

DATE

JUN 15 1995

*See Instructions On Reverse Side

Submit to Appropriate
District Office
State Lease - 4 copies
Fee Lease - 3 copies

State of New Mexico
Energy, Minerals and Natural Resources Department

Form C-102
Revised 1-1-89

OIL CONSERVATION DIVISION

P.O. Box 2088
Santa Fe, New Mexico 87504-2088

DISTRICT I
P.O. Box 1980, Hobbs, NM 88240

DISTRICT II
P.O. Drawer DD, Artesia, NM 88210

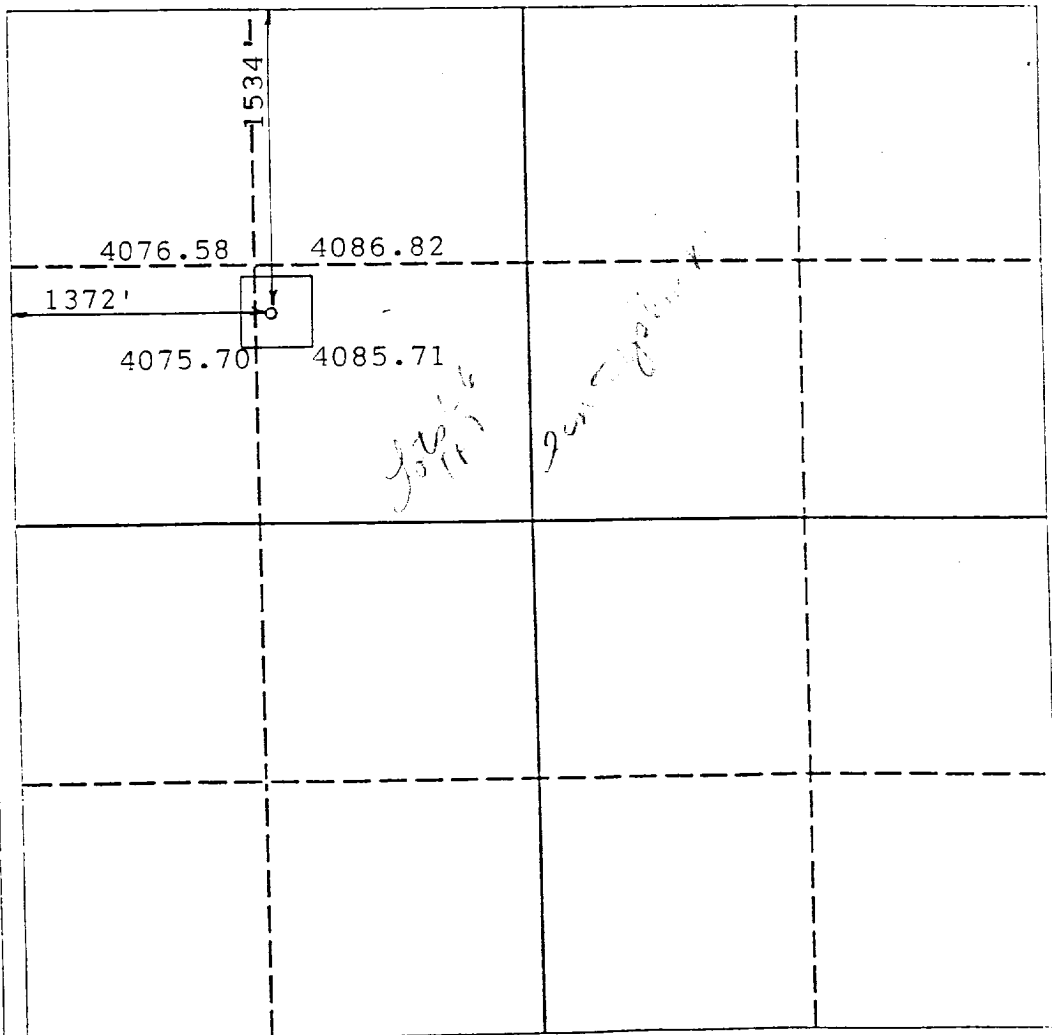
DISTRICT III
1000 Rio Brazos Rd., Aztec, NM 87410

WELL LOCATION AND ACREAGE DEDICATION PLAT

All Distances must be from the outer boundaries of the section

Operator The Wiser Oil Company			Lease Maljamar Grayburg Unit		Well No. 106
Unit Letter F	Section 10	Township 17 South	Range 32 East	County Lea	
Actual Footage Location of Well: 1534 feet from the North line and 1372 feet from the West line					
Ground level Elev. 4081	Producing Formation Grayburg San Andres		Pool Maljamar Grayburg San Andres		Dedicated Acreage: 40 Acres

- Outline the acreage dedicated to the subject well by colored pencil or hatchure marks on the plat below.
- If more than one lease is dedicated to the well, outline each and identify the ownership thereof (both as to working interest and royalty).
- If more than one lease of different ownership is dedicated to the well, have the interest of all owners been consolidated by communization, unitization, force-pooling, etc.?
☐ Yes ☐ No If answer is "yes" type of consolidation _____
If answer is "no" list the owners and tract descriptions which have actually been consolidated. (Use reverse side of this form if necessary).
No allowable will be assigned to the well until all interests have been consolidated (by communization, unitization, forced-pooling, or otherwise) or until a non-standard unit, eliminating such interest, has been approved by the Division.



OPERATOR CERTIFICATION

I hereby certify that the information contained herein is true and complete to the best of my knowledge and belief.

Signature

Melanie J. Parker

Printed Name

Agent

Position

The Wiser Oil Company

Company

04/26/95

Date

SURVEYOR CERTIFICATION

I hereby certify that the well location shown on this plat was plotted from field notes of actual surveys made by me or under my supervision, and that the same is true and correct to the best of my knowledge and belief.

Date Surveyed

January 28, 1995

Signature & Seal of **R. R. Patton**
Professional Surveyor

Certificate No.

8112

RECEIVED FEB 03 1995

RECEIVED

JUL 24 1995

JOHN HOBBS
OFFICE

APPLICATION FOR DRILLING

THE WISER OIL COMPANY
MALJAMAR GRAYBURG UNIT WELL NO. 106
1534' FNL & 1372' FWL, UNIT F
SECTION 10, TOWNSHIP 17 SOUTH, RANGE 32 EAST
LEA COUNTY, NEW MEXICO
LEASE NO. LC-064150

In connection with Form 3160-3, Application for Permit to Drill subject well, The Wiser Oil Company submits the following items of pertinent information in accordance with BLM requirements:

1. The geological surface formation is recent Permian with quaternary alluvium and other surficial deposits.
2. The estimated tops of geological markers are as follows:

Rustler Anhydrite	1060'
Top of Salt	1290'
Base of Salt	2220'
Queen	3350'
Grayburg	3800'
San Andres	4100'
T.D.	4400'

3. The estimated depths at which water, oil or gas formations are anticipated to be encountered:

Water: There is little, if any, fresh water in this section.

Oil: Grayburg and San Andres below 3900'.

Gas: None anticipated.

4. Proposed Casing Program: See Form 3160-3.
5. Proposed Control Equipment: See Form 3160-3.
6. Mud Program: See Form 3160-3.
7. Auxiliary Equipment: Blowout preventer, gas detector, kelly cock, pit level monitor, flow sensors and stabbing valve.

8. Testing, Logging and Coring Programs:

Drill Stem Tests: None planned.

Logging: GR-DLL-MSFL-Cal T.D. - 2300'

GR-CNL-CDL-Cal T.D. - Surface

9. No abnormal pressures or temperatures are anticipated. In the event abnormal pressures are encountered, the proposed mud program will be modified to increase the mud weight.

RECEIVED

JUL 24 1995

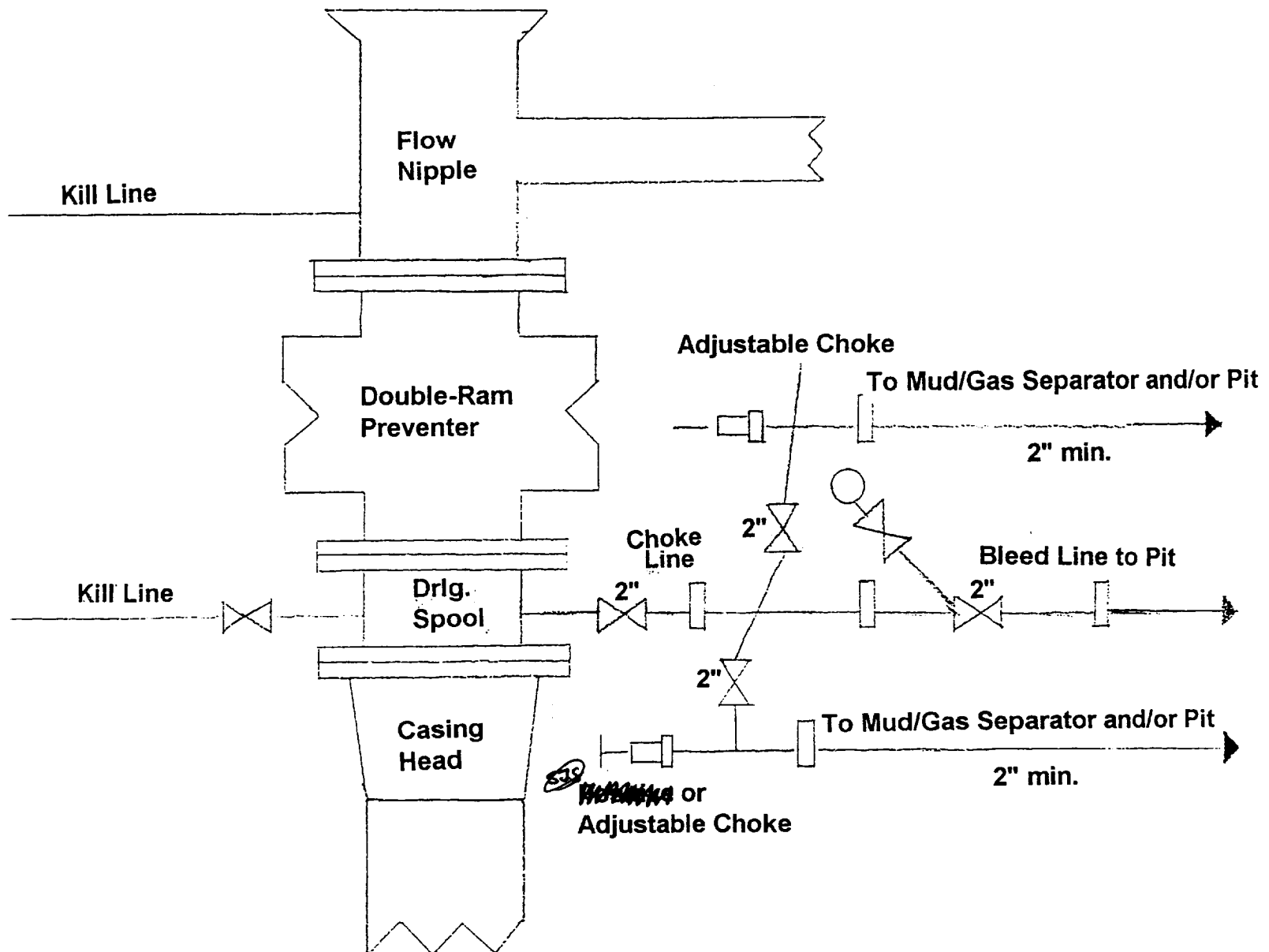
OOD HOBBS
OFFICE

BOP & CHOKE MANIFOLD

12"/900 Cameron SS Space Saver

3000# Working Pressure

3000# Working Pressure Choke Manifold



The Wiser Oil Company
Maljamar Grayburg Unit #106
1534' FNL & 1372' FWL, Unit F
Section 10, T17S, R32E, NMPM
Lea County, New Mexico

6/10/52
1/5

RECEIVED

JUL 24 1952
OCD HOBBS
OFFICE