

District I
PO Box 1980, Hobbs, NM 88241-1980
District II
PO Drawer DD, Artesia, NM 88211-0719
District III
1000 Rio Brazos Rd., Aztec, NM 87410
District IV
PO Box 2088, Santa Fe, NM 87504-2088

State of New Mexico
Energy, Minerals & Natural Resources Department

OIL CONSERVATION DIVISION
PO Box 2088
Santa Fe, NM 87504-2088

Form C-101
Revised February 10, 1994
Instructions on back
Submit to Appropriate District Office
State Lease - 6 Copies
Fee Lease - 5 Copies

☐ AMENDED REPORT

APPLICATION FOR PERMIT TO DRILL, RE-ENTER, DEEPEN, PLUGBACK, OR ADD A ZONE

Operator Name and Address: Collins & Ware, Inc. 508 W. Wall, Suite 1200 Midland, Texas 79701		' OGRID Number 004874
' Property Code 13256	' Property Name T. D. Pope	' API Number 30 - 025 - 33092
		' Well No. 35

⁷ Surface Location

UL or lot no.	Section	Township	Range	Lot Ida	Feet from the	North/South line	Feet from the	East/West line	County
0	35	14S	37E		1145	South	4513	East	Lea

⁸ Proposed Bottom Hole Location If Different From Surface

UL or lot no.	Section	Township	Range	Lot Ida	Feet from the	North/South line	Feet from the	East/West line	County
0	35	14S	37E		1145	South	1513	East	Lea

⁹ Proposed Pool 1 Denton Devonian	¹⁰ Proposed Pool 2
---	-------------------------------

¹¹ Work Type Code N	¹² Well Type Code O	¹³ Cable/Rotary R	¹⁴ Lease Type Code P	¹⁵ Grossed Level Elevation 3804
¹⁶ Multiple No	¹⁷ Proposed Depth 12,500	¹⁸ Formation Devonian	¹⁹ Contractor N/A	²⁰ Spud Date 11/15/95

²¹ Proposed Casing and Cement Program Pending Pope #33 & #34

Hole Size	Casing Size	Casing weight/foot	Setting Depth	Sacks of Cement	Estimated TOC
17 1/2	13 3/8	48	350	350	Surface
12 1/4	8 5/8	32	4900	1000	1400
7 7/8	5 1/2	17	12500	1520	7000

²² Describe the proposed program. If this application is to DEEPEN or PLUG BACK give the data on the present productive zone and proposed new productive zone. Describe the blowout prevention program, if any. Use additional sheets if necessary.

1. Build location and reserve pits. **R-10454 NSL**
2. MIRU rotary tools.
3. Spud 17 1/2" hole and drill to approx 350', case and cement surface string.
4. Continue drilling to approx 4900', case and cement intermediate string.
5. Continue drilling to approx 12500', test for commercial quantities of reserves.
6. Evaluate test results for (A. or B.)
- A. Completion - case and cement long string and complete well.
- B. P&A according to NMOCD rules and regulations.

²³ I hereby certify that the information given above is true and complete to the best of my knowledge and belief.

Signature:

Printed name:

Dianne Sumrall

Title:

Production Clerk

Date:

8/4/95

Phone:

(915) 687-3435

OIL CONSERVATION DIVISION

Approved by: **DAVID SEXTON**

Title:

Approval Date: **SEP 8 1995** Expiration Date:

Conditions of Approval:

Attached ☐

Permit Expires 6 Months From Approval
Date Unless Drilling Underway.

30

District I
PO Box 1980, Hobbs, NM 88241-1980

District II
PO Drawer DD, Artesia, NM 88211-0719

District III
1000 Rio Brasas Rd., Aztec, NM 87410

District IV
PO Box 2088, Santa Fe, NM 87504-2088

State of New Mexico
Energy, Minerals & Natural Resources Department

Form C-102
Revised February 10, 1994
Submit to Appropriate District Office
State Lease - 4 Copies
Fee Lease - 3 Copies

OIL CONSERVATION DIVISION

PO Box 2088
Santa Fe, NM 87504-2088

☐ AMENDED REPORT

WELL LOCATION AND ACREAGE DEDICATION PLAT

1 API Number 30-025- 33092	2 Pool Code 016910	3 Pool Name Denton Devonian
4 Property Code 13256	5 Property Name T. D. Pope	6 Well Number 35
7 OGRID No. 004874	8 Operator Name Collins & Ware, Inc.	9 Elevation 3804

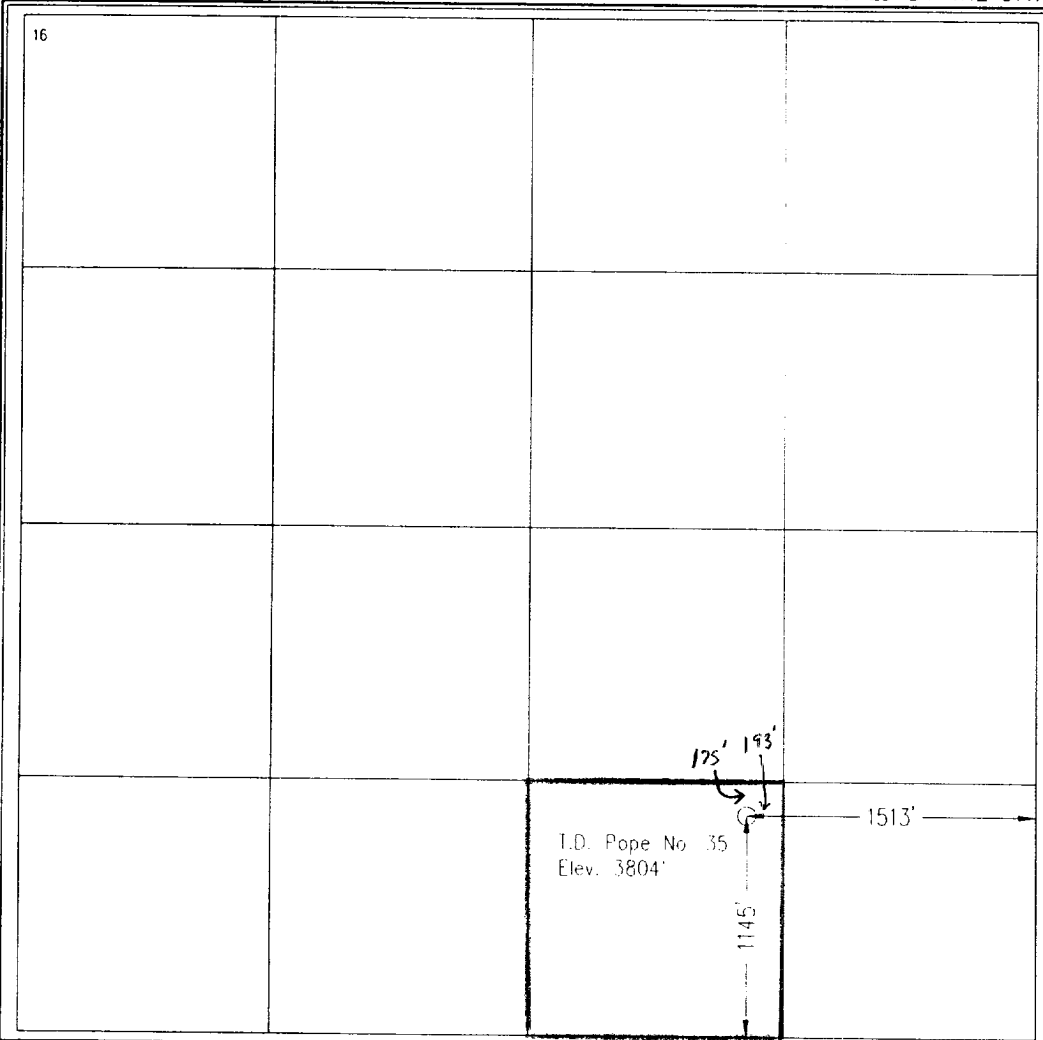
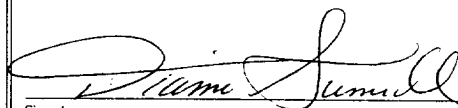
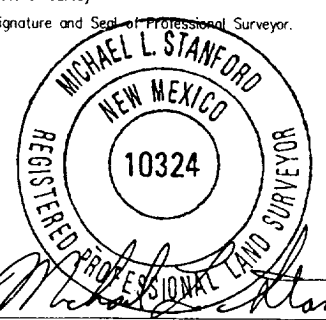
¹⁰Surface Location

UL or lot no. 0	Section 35	Township 14 S	Range 37 E	Lot Idn	Feet from the 1145	North/South line South	Feet from the 1513	East/West line East	County Lea
--------------------	---------------	------------------	---------------	---------	-----------------------	---------------------------	-----------------------	------------------------	---------------

¹¹Bottom Hole Location If Different From Surface

UL or lot no.	Section	Township	Range	Lot Idn	Feet from the	North/South line	Feet from the	East/West line	County
12 Dedicated Acres 40	13 Joint or Infill Infill	14 Consolidation Code	15 Order No.						

NO ALLOWABLE WILL BE ASSIGNED TO THIS COMPLETION UNIT ALL INTERESTS HAVE BEEN CONSOLIDATED
OR A NON-STANDARD UNIT HAS BEEN APPROVED BY THE DIVISION

16 	17 OPERATOR CERTIFICATION <i>I hereby certify that the information contained herein is true and complete to the best of my knowledge and belief.</i>  Signature Dianne Sumrall Printed Name Production Clerk Title 8/4/95 Date
	18 SURVEYOR CERTIFICATION <i>I hereby certify that the well location shown on this plat was plotted from field notes of actual surveys made by me or under my supervision, and that the same is true and correct to the best of my belief.</i> July 27, 1995 Date of Survey Signature and Seal of Professional Surveyor.  Certificate Number 10324

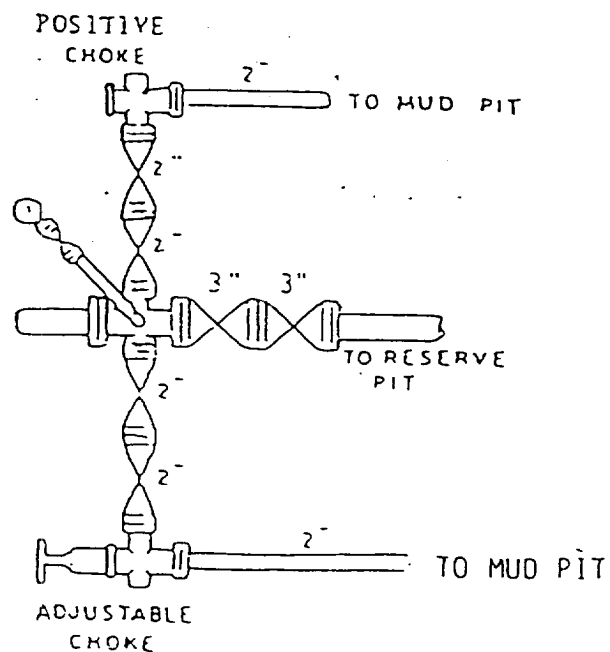
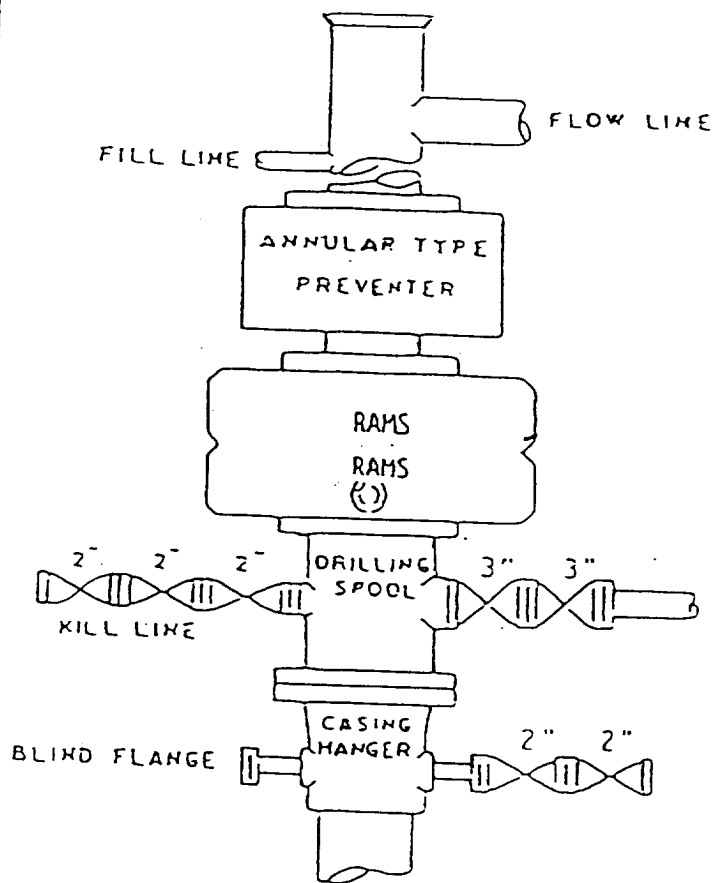
10 Miles NE of Lovington, New Mexico.

File No. A-0529

RECEIVED

AUG 07 1995

JOHN F. KELLY
CHIEF



BOP STACK

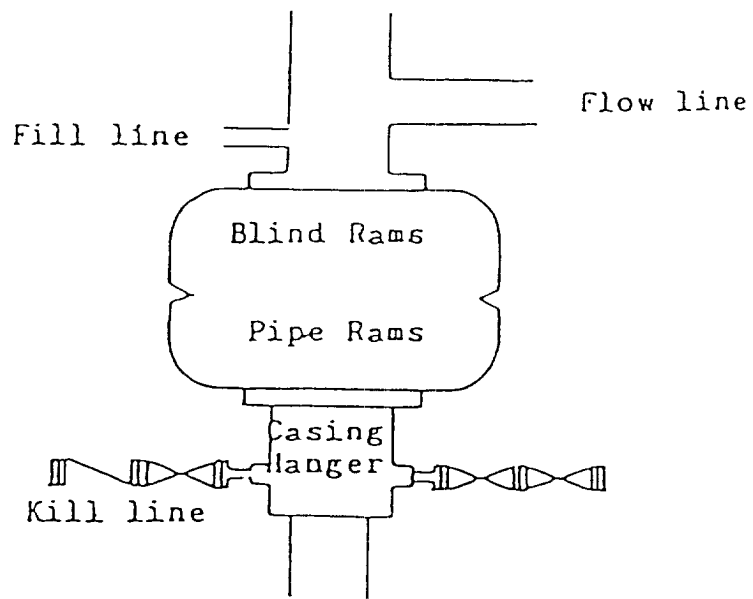
3000 PSI WORKING PRESSURE

IN USE WHILE DRILLING BELOW
8-5/8" CASING SEAT

Exhibit No.
BOP ARRANGEMENT

RECEIVED

AUG 07 1995



Blowout Preventer
3000 psi working pressure

RECEIVED

APR 19 1964

U.S. DEPT. OF JUSTICE