

DISTRICT II

P. O. Drawer DD
Artesia, NM 88211-0719

DISTRICT III

1000 Rio Brazos Rd.
Aztec, NM 87410

DISTRICT IV

P. O. Box 2088
Santa Fe, NM 87507-2088

OIL CONSERVATION DIVISION

P. O. Box 2088
Santa Fe, New Mexico 87504-2088

Submit to the Appropriate
District Office
State Lease - 4 copies
Fee Lease - 3 copies

☐ AMENDED REPORT

WELL LOCATION AND ACREAGE DEDICATION PLAT

¹ API Number 30-025-33184		² Pool Code 86800		³ Pool Name N Vacuum Atoka Morrow	
⁴ Property Code 17145		⁵ Property Name EUREKA STATE '36'			⁶ Well Number 1
⁷ OGRID No. 014245		⁸ Operator Name MATADOR OPERATING COMPANY			⁹ Elevation 4042'

¹⁰ SURFACE LOCATION

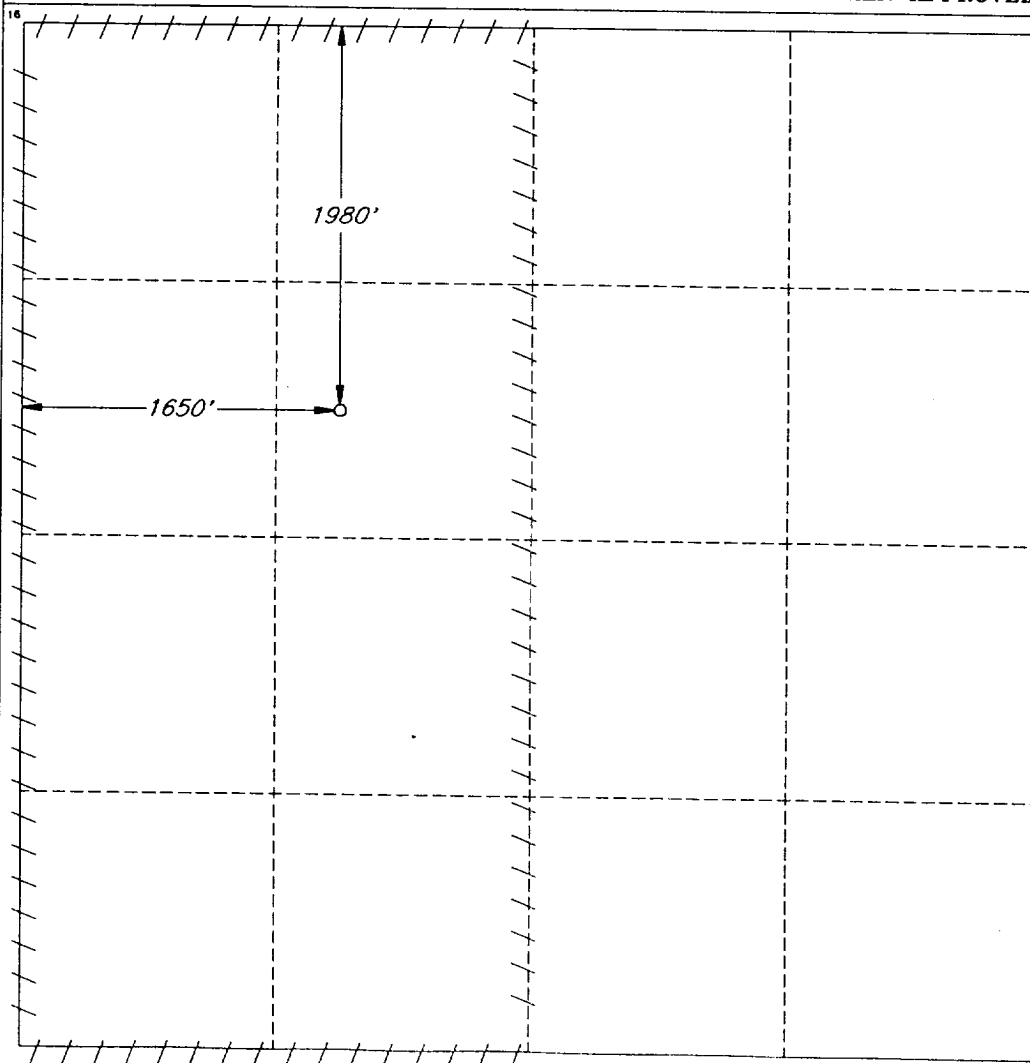
UL or lot no. F	Section 36	Township 16 SOUTH	Range 34 EAST, N.M.P.M.	Lot Ida	Feet from the 1980'	North/South line NORTH	Feet from the 1650'	East/West line WEST	County LEA
--------------------	---------------	----------------------	----------------------------	---------	------------------------	---------------------------	------------------------	------------------------	---------------

"BOTTOM HOLE LOCATION IF DIFFERENT FROM SURFACE

UL or lot no.	Section	Township	Range	Lot Ida	Feet from the	North/South line	Feet from the	East/West line	County
---------------	---------	----------	-------	---------	---------------	------------------	---------------	----------------	--------

¹² Dedicated Acres 320	¹³ Joint or Infill	¹⁴ Consolidation Code	¹⁵ Order No.
--------------------------------------	-------------------------------	----------------------------------	-------------------------

NO ALLOWABLE WELL BE ASSIGNED TO THIS COMPLETION UNTIL ALL INTERESTS HAVE BEEN
CONSOLIDATED OR A NON-STANDARD UNIT HAS BEEN APPROVED BY THE DIVISION



OPERATOR CERTIFICATION

I hereby certify that the information
contained herein is true and complete
to the best of my knowledge and belief.

Signature
R. F. Burke

Printed Name
R. F. Burke

Title
Operations Manager

Date
November 17, 1995

SURVEYOR CERTIFICATION

I hereby certify that the well
location shown on this plat was
plotted from field notes of actual
surveys made by me or under
my supervision, and that the
same is true and correct to the
best of my belief.

Date of Survey
NOVEMBER 15, 1995

Signature and Seal of
Professional Surveyor

V. Lynn Bezner
V. LYNN
BEZNER
NO. 7920

Certification No.
V. L. BEZNER AND R. F. S. #7920

JOB #42468 / 97 NE / V.H.B.