

DISTRICT I
P.O. Box 1980, Hobbs, NM 88241-1980

DISTRICT II
P.O. Drawer DD, Artesia, NM 88211-0719

DISTRICT III
1000 Rio Brazos Rd., Artesia, NM 87410

DISTRICT IV
P.O. Box 2088, Santa Fe, NM 87504-2088

State of New Mexico
Energy, Minerals and Natural Resources Department

Form C-102
Revised February 10, 1994
Submit to Appropriate District Office
State Lease - 4 Copies
Fee Lease - 3 Copies

OIL CONSERVATION DIVISION

P.O. Box 2088
Santa Fe, New Mexico 87504-2088

☐ AMENDED REPORT

WELL LOCATION AND ACREAGE DEDICATION PLAT

API Number 30-025-33385	Pool Code 59847	Pool Name TOWNSEND PERMO UPPER PENN
Property Code 18838	Property Name GALLAGHER STATE	Well Number 2
OGRID No. 000671	Operator Name AMERIND OIL COMPANY LIMITED PARTNERSHIP	Elevation 3992

Surface Location

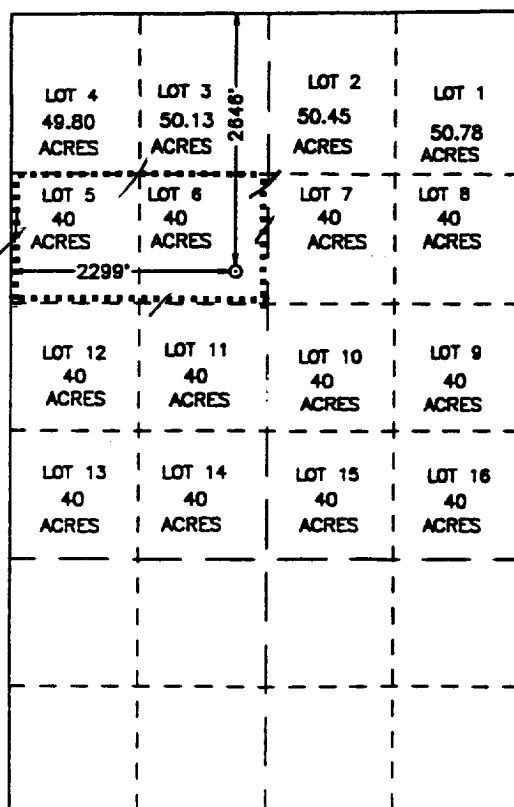
UL or lot No.	Section	Township	Range	Lot Idn	Feet from the	North/South line	Feet from the	East/West line	County
F/6	2	16 S	35 E	6	2646	NORTH	2299	WEST	LEA

Bottom Hole Location If Different From Surface

UL or lot No.	Section	Township	Range	Lot Idn	Feet from the	North/South line	Feet from the	East/West line	County
F/6	2	16 S	35 E	6	2646	NORTH	2299	WEST	LEA

Dedicated Acres	Joint or Infill	Consolidation Code	Order No.
80			

NO ALLOWABLE WILL BE ASSIGNED TO THIS COMPLETION UNTIL ALL INTERESTS HAVE BEEN CONSOLIDATED
OR A NON-STANDARD UNIT HAS BEEN APPROVED BY THE DIVISION



SCALE: 1" = 2000'

OPERATOR CERTIFICATION

I hereby certify that the information
contained herein is true and complete to the
best of my knowledge and belief.

Robert C. Leibrock

Signature

ROBERT C. LEIBROCK

Printed Name

GENERAL PARTNER

Title

MAY 5, 2000

Date

SURVEYOR CERTIFICATION

I hereby certify that the well location shown
on this plat was plotted from field notes of
actual surveys made by me or under my
supervision, and that the same is true and
correct to the best of my belief.

APRIL 10, 1996

Date Surveyed J. EIDSON JLP

Signature & Seal of
Professional Surveyor

James J. Eidson

No. Num. 96-150438

Certified to: WEST, 676
J. EIDSON, 3239