

District I
PO Box 1980, Hobbs, NM 88241-1980
District II
811 South First, Artesia, NM 88210
District III
1000 Rio Brazos Rd., Aztec, NM 87410
District IV
2040 South Pacheco, Santa Fe, NM 87505

State of New Mexico
Energy, Minerals & Natural Resources Department

OIL CONSERVATION DIVISION
2040 South Pacheco
Santa Fe, NM 87505

Form C-101
Revised October 18, 1994
Instructions on back
Submit to Appropriate District Office
State Lease - 6 Copies
Fee Lease - 5 Copies

☐ AMENDED REPORT

APPLICATION FOR PERMIT TO DRILL, RE-ENTER, DEEPEN, PLUGBACK, OR ADD A ZONE

¹ Operator Name and Address. Browning Oil Company, Inc. P. O. Box 606 Giddings, Texas 78942		² OGRID Number 142316
		³ API Number 30 - 0 25 33407
⁴ Property Code 13859	⁵ Property Name BYERS	⁶ Well No. 1

⁷ Surface Location

UL or lot no.	Section	Township	Range	Lot Idn	Feet from the	North/South line	Feet from the	East/West line	County
C	29	16 S	39 E		995'	North	1932	West	Lea

⁸ Proposed Bottom Hole Location If Different From Surface

UL or lot no.	Section	Township	Range	Lot Idn	Feet from the	North/South line	Feet from the	East/West line	County
F	29	16 S	39E		1695'	North	1932'	West	Lea

⁹ Proposed Pool 1 Wildcat ABO	¹⁰ Proposed Pool 2
---	-------------------------------

¹¹ Work Type Code E	¹² Well Type Code 0	¹³ Cable/Rotary R	¹⁴ Lease Type Code P	¹⁵ Ground Level Elevation 3671'
¹⁶ Multiple No	¹⁷ Proposed Depth 8900' MD/8300' TVD	¹⁸ Formation ABO	¹⁹ Contractor Not selected	²⁰ Spud Date 9/1/97

²¹ Proposed Casing and Cement Program

Hole Size	Casing Size	Casing weight/foot	Setting Depth	Sacks of Cement	Estimated TOC
12 1/4"	8 5/8"	24#	2277'	1000	surface *
7 7/8"/6 1/8"	4 1/2"	11.5#	8900'	1500	2000'

** Describe the proposed program. If this application is to DEEPEN or PLUG BACK give the data on the present productive zone and proposed new productive zone. Describe the blowout prevention program, if any. Use additional sheets if necessary.

* Already in well

This project is a re-entry and clean out of the well to +/-3200'. A kick-off plug will be set and a horizontal hole drilled to test the ABO formation. This project is supported by 3-D seismic and well control.

Permit Expires 1 Year From Approval
Date Until is Being Underway
Re-Entry

²³ I hereby certify that the information given above is true and complete to the best of my knowledge and belief. Signature: <i>Betty Petzold</i>		OIL CONSERVATION DIVISION	
Printed name: Betty Petzold		Approved by: ORIGINAL SIGNED BY CHRIS WILLIAMS	
Title: Prod. Technician		Title: DISTRICT I SUPERVISOR	
		Approval Date: 11/6 87 1997	Expiration Date:

DISTRICT I
P. O. Box 1980
Hobbs, NM 88241-1980

State of New Mexico
Energy, Minerals, and Natural Resources Department

Form C-102
Revised 02-10-94
Instructions on back

DISTRICT II
P. O. Drawer DD
Artesia, NM 88211-0719

OIL CONSERVATION DIVISION
P. O. Box 2088
Santa Fe, New Mexico 87504-2088

Submit to the Appropriate
District Office
State Lease - 4 copies
Fee Lease - 3 copies

DISTRICT III
1000 Rio Brazos Rd.
Aztec, NM 87410

☐ AMENDED REPORT

DISTRICT IV
P. O. Box 2088
Santa Fe, NM 87507-2088

WELL LOCATION AND ACREAGE DEDICATION PLAT

¹ API Number 30-025-33407	² Pool Code	³ Pool Name Wildcat
⁴ Property Code 18859	⁵ Property Name BYERS	⁶ Well Number 1
⁷ OGRID No. 142316	⁸ Operator Name BROWNING OIL COMPANY, INC.	⁹ Elevation 3671'

" SURFACE LOCATION

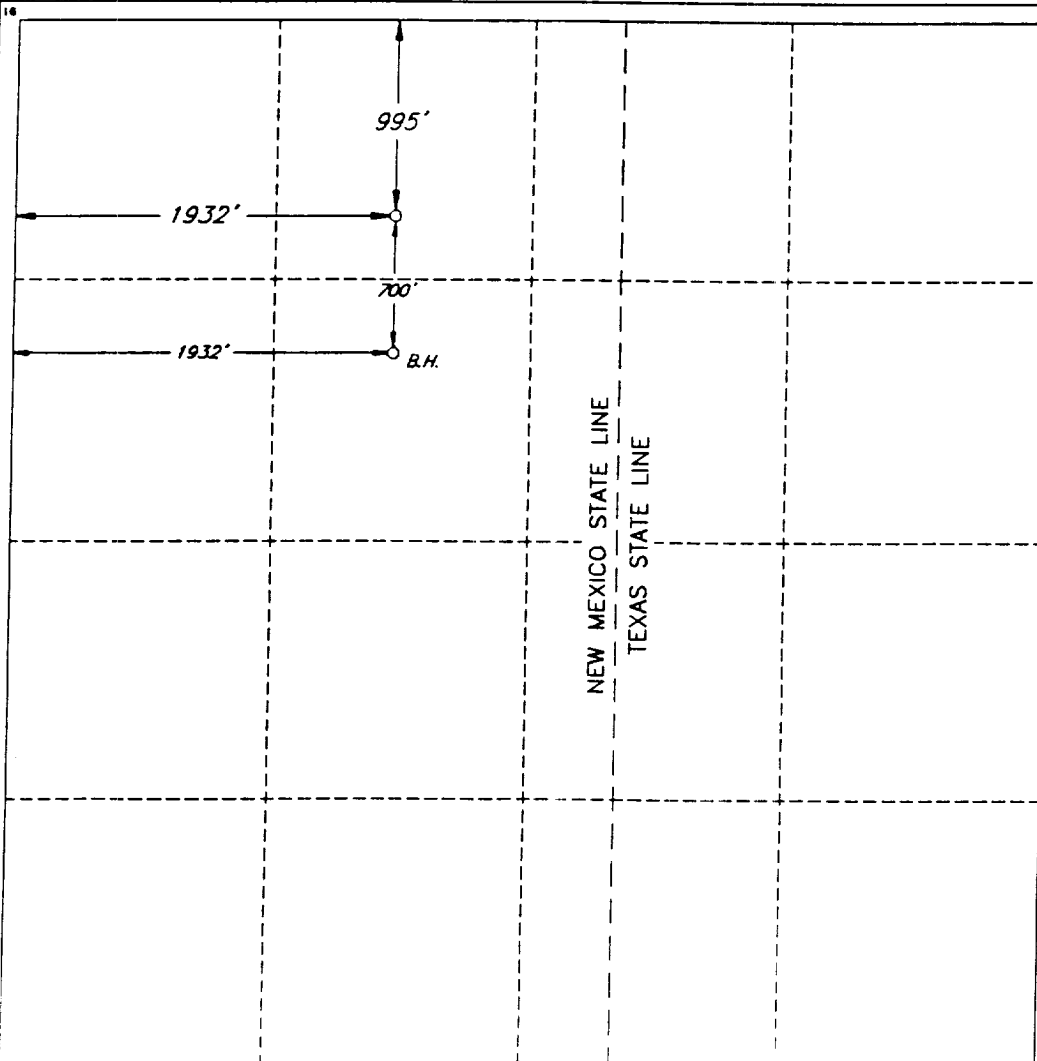
UL or lot no.	Section	Township	Range	Lot Ida	Feet from the	North/South line	Feet from the	East/West line	County
C	29	16 SOUTH	39 EAST, N.M.P.M.		995'	NORTH	1932'	WEST	LEA

" BOTTOM HOLE LOCATION IF DIFFERENT FROM SURFACE

UL or lot no.	Section	Township	Range	Lot Ida	Feet from the	North/South line	Feet from the	East/West line	County
F	29	16 SOUTH	39 EAST, N.M.P.M.		1695'	NORTH	1932'	WEST	LEA

¹² Dedicated Acres 40	¹³ Joint or Infill N	¹⁴ Consolidation Code ---	¹⁵ Order No.
-------------------------------------	------------------------------------	---	-------------------------

NO ALLOWABLE WELL BE ASSIGNED TO THIS COMPLETION UNTIL ALL INTERESTS HAVE BEEN
CONSOLIDATED OR A NON-STANDARD UNIT HAS BEEN APPROVED BY THE DIVISION



OPERATOR CERTIFICATION

I hereby certify that the information
contained herein is true and complete
to the best of my knowledge and belief.

Signature
Betty Petzold

Printed Name
Betty Petzold

Title
Prod. Technician

Date
8/7/97

SURVEYOR CERTIFICATION

I hereby certify that the well
location shown on this plat was
plotted from field notes of actual
surveys made by me or under
my supervision, and that the
same is true and correct to the
best of my belief.

Date of Survey
JULY 10, 1997

Signature and Seal of
Professional Surveyor

Roger M. Robbins

Certificate No.
ROGER M. ROBBINS P.S.#12128

JOB #52856 / 95 NE / V.H.B.

DISTRICT I
P. O. Box 1980
Hobbs, NM 88241-1980

DISTRICT II
P. O. Drawer DD
Artesia, NM 88211-0719

DISTRICT III
1000 Rio Brazos Rd.
Aztec, NM 87410

DISTRICT IV
P. O. Box 2088
Santa Fe, NM 87507-2088

State of New Mexico
Department of Energy, Minerals, and Natural Resources

Form O-102
Revised 02-10-94
Instructions on back

Submit to the Appropriate
District Office
State Lease - 4 copies
Fee Lease - 3 copies

OIL CONSERVATION DIVISION

P. O. Box 2088
Santa Fe, New Mexico 87504-2088

☐ AMENDED REPORT

WELL LOCATION AND ACREAGE DEDICATION PLAT

API Number 30-025-33407	Pool Code	Pool Name Wildcat (Abu)
Property Code 18859	Property Name BYERS	Well Number 1
OGUID No. 142316	Operator Name BROWNING OIL COMPANY, INC.	Elevation 3671'

" SURFACE LOCATION

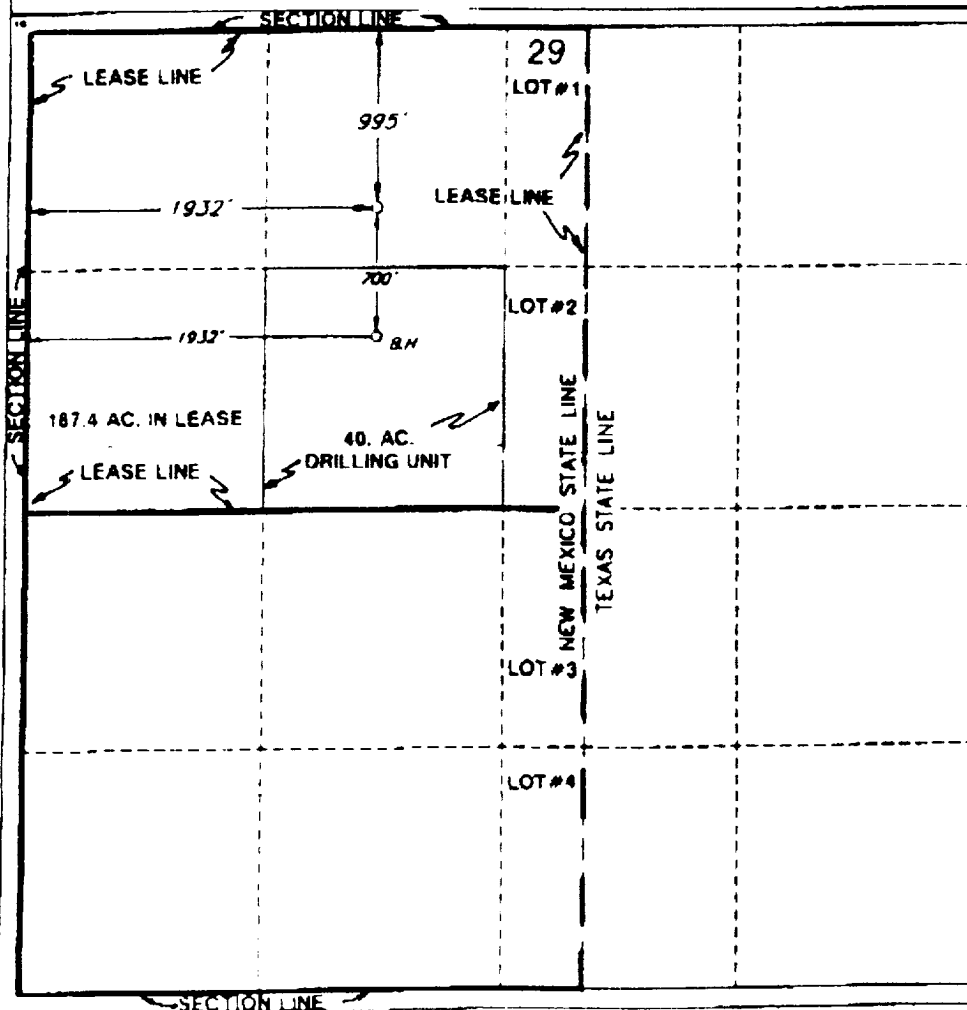
UL or lot no.	Section	Township	Range	Lot 16	Feet from the North/South line	Feet from the East/West line	County
C	29	16 SOUTH	39 EAST, N.M.P.M.		995'	1932'	LEA

" BOTTOM HOLE LOCATION IF DIFFERENT FROM SURFACE

UL or lot no.	Section	Township	Range	Lot 16	Feet from the North/South line	Feet from the East/West line	County
F	29	16 SOUTH	39 EAST, N.M.P.M.		1695'	1932'	LEA

Dedicated Acres	Joint or Infill	Consolidation Code	Order No.
40	N	--	

NO ALLOWABLE WELL BE ASSIGNED TO THIS COMPLETION UNTIL ALL INTERESTS HAVE BEEN CONSOLIDATED OR A NON-STANDARD UNIT HAS BEEN APPROVED BY THE DIVISION



OPERATOR CERTIFICATION

I hereby certify that the information contained herein is true and complete to the best of my knowledge and belief.

Signature
Betty Petzold

Printed Name
Betty Petzold

Title
Prod. Technician

Date
8/20/97

SURVEYOR CERTIFICATION

I hereby certify that the well location shown on this plat was plotted from field notes of actual surveys made by me or under my supervision, and that the same is true and correct to the best of my belief.

Date of Survey
JULY 10, 1997

Signature and Seal of
Professional Surveyor

Roger M. Robbins

Certificate No.
ROGER M. ROBBINS P.S.#12128

JOB #52856 / 95 NE / V.H.B.