

District I
PO Box 1980, Hobbs, NM 88241-1980
District II
PO Drawer DD, Artesia, NM 88211-0719
District III
1000 Rio Brazos Rd., Aztec, NM 87410
District IV
PO Box 2088, Santa Fe, NM 87504-2088

State of New Mexico
Energy, Minerals & Natural Resources Department

OIL CONSERVATION DIVISION
PO Box 2088
Santa Fe, NM 87504-2088

Form C-101
Revised February 10, 1994
Instructions on back
Submit to Appropriate District Office
State Lease - 6 Copies
Fee Lease - 5 Copies

☐ AMENDED REPORT

APPLICATION FOR PERMIT TO DRILL, RE-ENTER, DEEPEN, PLUGBACK, OR ADD A ZONE

Operator Name and Address. UMC Petroleum Corporation 410 17th Street, Suite 1400 Denver, Colorado 80202		' OGRID Number 23654
		' API Number 30-025-33713
' Property Code 20032	' Property Name Townsend State	' Well No. 1

⁷ Surface Location

UL or lot no.	Section	Township	Range	Lot Ida	Feet from the	North/South line	Feet from the	East/West line	County
16	2	16S	35E		3526	South	727	East	Lea

⁸ Proposed Bottom Hole Location If Different From Surface

UL or lot no.	Section	Township	Range	Lot Ida	Feet from the	North/South line	Feet from the	East/West line	County
17	2	16S	35E		2500	South	350	East	Lea

⁹ Proposed Pool 1 South Big Dog Strawn	¹⁰ Proposed Pool 2
--	-------------------------------

¹¹ Work Type Code P (Horizontal)	¹² Well Type Code O	¹³ Cable/Rotary R	¹⁴ Lease Type Code S	¹⁵ Ground Level Elevation 3983'
¹⁶ Multiple NO	¹⁷ Proposed Depth See Attached	¹⁸ Formation Strawn	¹⁹ Contractor Sierra Well Serv.	²⁰ Spud Date 12/19/96

²¹ Proposed Casing and Cement Program

Hole Size	Casing Size	Casing weight/feet	Setting Depth	Sacks of Cement	Estimated TOC
See attached	completion report and wellbore diagrams				

²² Describe the proposed program. If this application is to DEEPEN or PLUG BACK give the data on the present productive zone and proposed new productive zone. Describe the blowout prevention program, if any. Use additional sheets if necessary.

See attached sheets

- 1) Wellbore diagrams
- 2) Re-completion summary
- 3) Directional program
- 4) Completion report

DD-180<H>
Permit Expires 1 Year From Approval
Date Unless Drilling Underway
Directional

BOP Program: Rotating Head blowout preventer=12" 3000 psi type double ram.
12" 3000 psi GK, 200 gal 5 station Koomey Air electric 4" 3000 psi
Manifold.

²³ I hereby certify that the information given above is true and complete to the best of my knowledge and belief.

Signature:

Printed name:

Scott M. Webb

Title:

Regulatory Coordinator

Date:

5/27/97

Phone:

(303)573-4721

OIL CONSERVATION DIVISION

Approved by: Orig. Signed by

Paul Kautz

Title:

Geologist

Approval Date:

Expiration Date:

Conditions of Approval:

Attached ☐



DISTRICT I
P.O. Box 1880, Hobbs, NM 88241-1880

State of New Mexico
Energy, Minerals and Natural Resources Department

Form C-102
Revised February 10, 1994
Submit to Appropriate District Office
State Lease - 4 Copies
Fee Lease - 3 Copies

DISTRICT II
P.O. Drawer DD, Artesia, NM 88211-0710

DISTRICT III
1000 Rio Brazos Rd., Artesia, NM 87410

OIL CONSERVATION DIVISION

P.O. Box 2088
Santa Fe, New Mexico 87504-2088

☐ AMENDED REPORT

DISTRICT IV
P.O. Box 2088, Santa Fe, NM 87504-2088

WELL LOCATION AND ACREAGE DEDICATION PLAT

API Number 30-025-33713	Pool Code 40875	Pool Name West Lovington Strawn
Property Code 20032	Property Name TOWNSEND STATE	Well Number 1
OGRID No. 23654	Operator Name UMC PETROLEUM CORPORATION	Elevation 3983

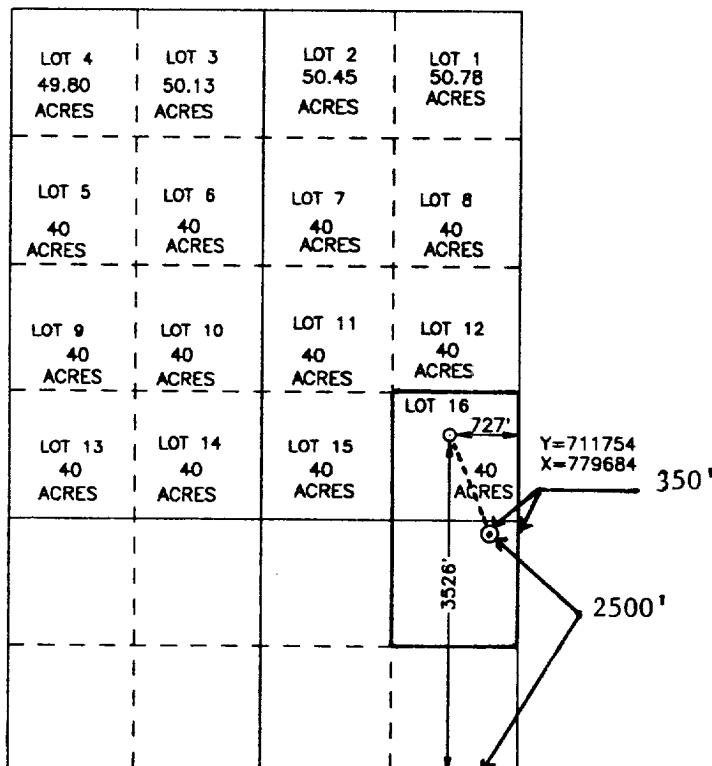
Surface Location

UL or lot No.	Section	Township	Range	Lot Idn	Feet from the	North/South line	Feet from the	East/West line	County
16	2	16 S	35 E		3526	SOUTH	727	EAST	LEA

Bottom Hole Location If Different From Surface

UL or lot No.	Section	Township	Range	Lot Idn	Feet from the	North/South line	Feet from the	East/West line	County
17	2	16S	35E		2500'	South	350	East	Lea
Dedicated Acres 80	Joint or Infill	Consolidation Code	Order No.						

NO ALLOWABLE WILL BE ASSIGNED TO THIS COMPLETION UNTIL ALL INTERESTS HAVE BEEN CONSOLIDATED
OR A NON-STANDARD UNIT HAS BEEN APPROVED BY THE DIVISION



OPERATOR CERTIFICATION

I hereby certify the the information
contained herein is true and complete to the
best of my knowledge and belief.

Scott M. Webb
Signature

Scott M. Webb

Printed Name

Regulatory Coordinator

Title

5/5/97

Date

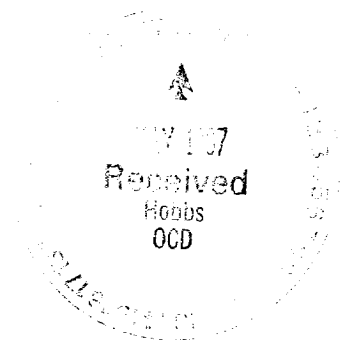
SURVEYOR CERTIFICATION

I hereby certify that the well location shown
on this plat was plotted from field notes of
actual surveys made by me or under my
supervision, and that the same is true and
correct to the best of my belief.

NOVEMBER 29, 1996

Date Surveyed
Signature & Seal of
Professional Surveyor

Gary R. Eidson
W.S. Num. 96-11-1577
Certified by
JOHN W. WEST, 676
GARY R. EIDSON, 3239
GARY R. EIDSON, 12641



Townsend State #1

Proposed Horizontal Re-completion

Procedure:

- 1) Re-enter well, set 40' type "H" neat cement plug at 11,463 md.
- 2) Mill 5-1/2" casing at md 11,460 feet. Dress cement to KOP of 11,463'.
- 3) Drill build section at 71 degrees per 100' md.
- 4) Drill lateral section to specified depth/length of 12,602 md/11,525' tvd.
- 5) Directional surveys will be conducted by a MWD device in the motor bit.

Wellbore Specifics:

KOP:	11,463' md.
Rate of Build:	71 degrees per 100'.
End of Build:	11,591' md / 11,534' tvd.
Total Depth:	12,602' md / 11,525' tvd.
Open Hole Lateral:	1093' md.

Surface Hole Location:

3526' FSL & 727' FEL, Lot 16, Section 2-T16S-R35E, Lea County.

Bottom Hole Location:

2500' FSL & 350' FEL, Lot 17, Section 2-T16S-R35E, Lea County.

(1026' South of surface & 377' East of surface)

Dedicated Acreage: 80 Acres

Wnsend State #1
Lot 16, Sec. 2-T16S-R35E
Lea County, New Mexico
Proposed Horizontal Recompletion

SHL: 3526' FSL & 727' FEL
Lot 16, Section 2-T16S-R35E

13-3/8" 48# Casing @ 400'.
Cemented to surface with 405 sx.

8-5/8" 32# surface casing @ 4750'
Cemented to surface with 1675 sx

TOC @ 7140'

BHL: 2500' FSL & 350' FWL
Lot 17, Section 2-T16S-R35E

Build Rate :
71 Degrees/100 feet

KOP: 11,463' md

Lateral Section 1093' md

40' Cement Plug

(Open Hole)

Strawn Perfs:
11,501' - 11,540'

5-1/2" 17# @ 11,805'
Cemented with 1200 sx

TDMD 12,602'
TDTVD 11,525'

TD 11,805'