

DISTRICT I
P.O. Box 1960, Hobbs, NM 88241-1960

State of New Mexico
Energy, Minerals and Natural Resources Department

Form C-102
Revised February 10, 1994
Submit to Appropriate District Office
State Lease - 4 Copies
Fee Lease - 3 Copies

DISTRICT II
P.O. Drawer DD, Artesia, NM 88211-0719

OIL CONSERVATION DIVISION
P.O. Box 2088
Santa Fe, New Mexico 87504-2088

DISTRICT III
1000 Rio Brazos Rd., Aztec, NM 87410

AMENDED REPORT

DISTRICT IV
P.O. Box 2088, Santa Fe, NM 87504-2088

WELL LOCATION AND ACREAGE DEDICATION PLAT

| | | |
|----------------------------|---|--|
| API Number 30-025-33749 | Pool Code 59847 | Pool Name Townsend Permo Upper Penn |
| Property Code 20116 | Property Name MEDLIN | Well Number 1 |
| OGRID No. 000671 | Operator Name AMERIND OIL COMPANY, LIMITED PARTNERSHIP, LXXX | Elevation 4038' |

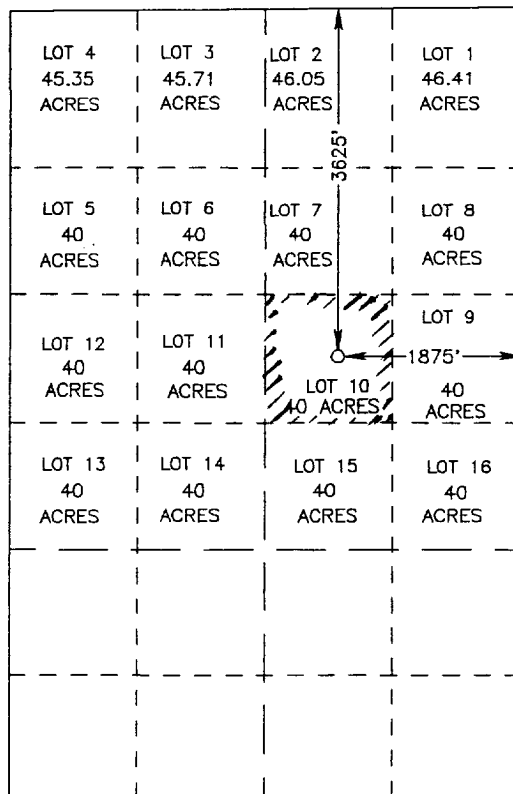
Surface Location

| UL or lot No. | Section | Township | Range | Lot Idn | Feet from the | North/South line | Feet from the | East/West line | County |
|---------------|---------|----------|-------|---------|---------------|------------------|---------------|----------------|--------|
| J/10 | 5 | 16 S | 35 E | | 3625 | NORTH | 1875 | EAST | LEA |

Bottom Hole Location If Different From Surface

| UL or lot No. | Section | Township | Range | Lot Idn | Feet from the | North/South line | Feet from the | East/West line | County |
|-----------------------|-----------------|--------------------|-----------|---------|---------------|------------------|---------------|----------------|--------|
| | | | | | | | | | |
| Dedicated Acres 40 | Joint or Infill | Consolidation Code | Order No. | | | | | | |

NO ALLOWABLE WILL BE ASSIGNED TO THIS COMPLETION UNTIL ALL INTERESTS HAVE BEEN CONSOLIDATED
OR A NON-STANDARD UNIT HAS BEEN APPROVED BY THE DIVISION



SCALE: 1"=2000'

OPERATOR CERTIFICATION

I hereby certify that the information contained herein is true and complete to the best of my knowledge and belief.

Robert C. Leibrock
Signature

Robert C. Leibrock
Printed Name

General Partner
Title

March 3, 1997
Date

SURVEYOR CERTIFICATION

I hereby certify that the well location shown on this plat was plotted from field notes of actual surveys made by me or under my supervision, and that the same is true and correct to the best of my belief.

DECEMBER 23, 1996
Date Surveyed

Signature & Seal of
Professional Surveyor

W.O. NORTON
W.O. NORTON
1686

W.O. NORTON
1686

Certificate No. JOHN W. WEST, 676
RONALD J. EIDSON, 3239