

II

DD, Artesia, NM 88211-0719

DISTRICT III
000 Rio Brazos Rd., Aztec, NM 87410

OIL CONSERVATION DIVISION

P.O. Box 2088

Santa Fe, New Mexico 87504-2088

DISTRICT IV
P.O. BOX 2088, SANTA FE, N.M. 87504-2088☐ AMENDED REPORT

WELL LOCATION AND ACREAGE DEDICATION PLAT

API Number 30-025-33763	Pool Code L	Pool Name WILDCAT
Property Code 20129	Property Name A.J. "6"	Well Number 1
OGRID No. 159123	Operator Name RAND PAULSON OIL COMPANY INC.	Elevation 4055

Surface Location

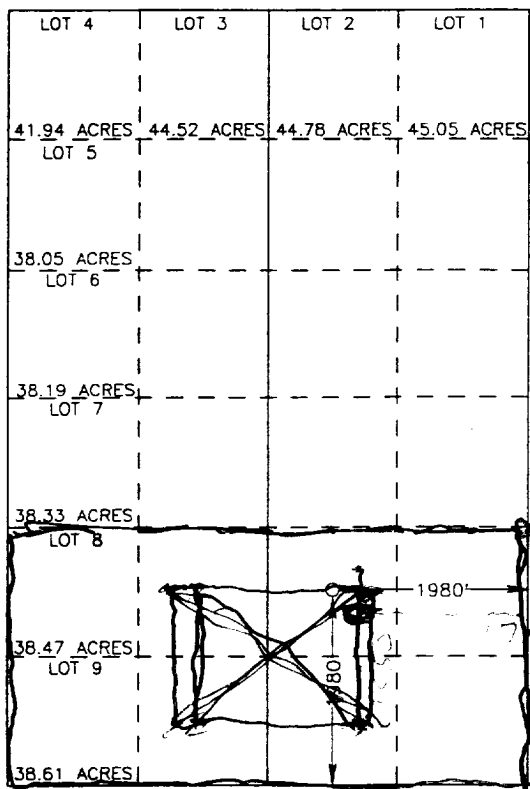
UL or lot No.	Section	Township	Range	Lot Idn	Feet from the	North/South line	Feet from the	East/West line	County
R	6	16 S	35 E		1980	SOUTH	1980	EAST	LEA

Bottom Hole Location If Different From Surface

UL or lot No.	Section	Township	Range	Lot Idn	Feet from the	North/South line	Feet from the	East/West line	County

Dedicated Acres	Joint or Infill	Consolidation Code	Order No.
± 320	N	PENDING	

NO ALLOWABLE WILL BE ASSIGNED TO THIS COMPLETION UNTIL ALL INTERESTS HAVE BEEN CONSOLIDATED
OR A NON-STANDARD UNIT HAS BEEN APPROVED BY THE DIVISION



OPERATOR CERTIFICATION

I hereby certify the the information
contained herein is true and complete to the
best of my knowledge and belief.

[Signature]

Signature

O.H. ROUTH

Printed Name

AGENT

Title

12-30-96

Date

SURVEYOR CERTIFICATION

I hereby certify that the well location shown
on this plat was plotted from field notes of
actual surveys made by me or under my
supervision, and that the same is true and
correct to the best of my belief.

DEC 12, 1996

Date Surveyed

DMCC

[Signature]

Signature & Seal of Professional Surveyor

3239

98-11-1645

12-16-96

JOHN W. WEST

BOON J. EIDSON

GARY EIDSON

676

3239

12641

9/30/97

James Baucom
Rand Paulson

A f 6 #1

6-16-35

396-8569

Set CIBP @ 12,350 psi
35' ~~at~~ cmt on top. Load hole
pressure test to 500 psi for
30 min. No more than 50% drop
(10%)
