

DISTRICT I
P.O. Box 1990, Hobbs, NM 88241-1990

State of New Mexico

Energy, Minerals and Natural Resources Department

Form C-102
Revised February 10, 1994
Submit to Appropriate District Office
State Lease - 4 Copies
Fee Lease - 3 Copies

DISTRICT II
P.O. Drawer DD, Artesia, NM 88211-0719

DISTRICT III
1000 Rio Brazos Rd., Aztec, NM 87410

DISTRICT IV
P.O. BOX 2088, SANTA FE, N.M. 87504-2088

OIL CONSERVATION DIVISION

P.O. Box 2088
Santa Fe, New Mexico 87504-2088

☒ AMENDED REPORT

WELL LOCATION AND ACREAGE DEDICATION PLAT

API Number 30-025-33934	Pool Code 96649	Pool Name NE Shoe Bar-Strawn
Property Code 20764	Property Name LITTLE 6	Well Number 1
OGRID No. 147179	Operator Name CHESAPEAKE OPERATING, INC.	Elevation 3954

Surface Location

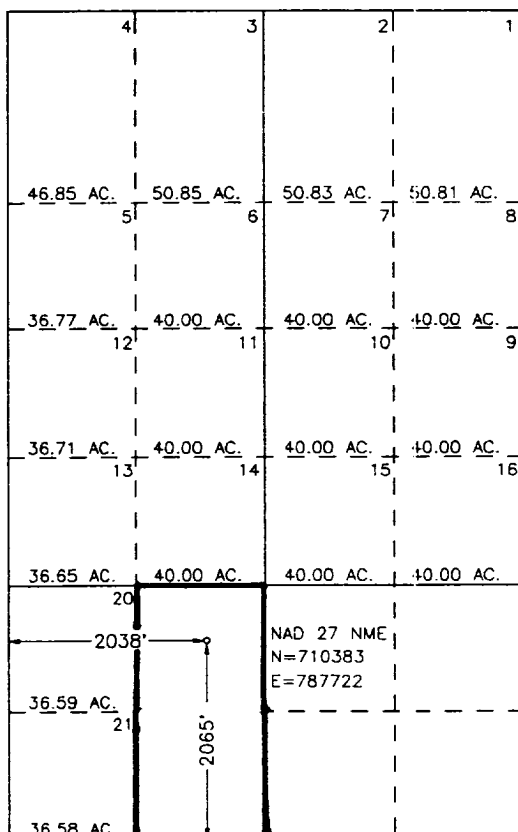
UL or lot No. K	Section 6	Township 16 S	Range 36 E	Lot Idn	Feet from the 2065	North/South line SOUTH	Feet from the 2038	East/West line WEST	County LEA
--------------------	--------------	------------------	---------------	---------	-----------------------	---------------------------	-----------------------	------------------------	---------------

Bottom Hole Location If Different From Surface

UL or lot No.	Section	Township	Range	Lot Idn	Feet from the	North/South line	Feet from the	East/West line	County
---------------	---------	----------	-------	---------	---------------	------------------	---------------	----------------	--------

Dedicated Acres 80	Joint or Infill	Consolidation Code	Order No.
-----------------------	-----------------	--------------------	-----------

NO ALLOWABLE WILL BE ASSIGNED TO THIS COMPLETION UNTIL ALL INTERESTS HAVE BEEN CONSOLIDATED
OR A NON-STANDARD UNIT HAS BEEN APPROVED BY THE DIVISION



OPERATOR CERTIFICATION

I hereby certify the the information contained herein is true and complete to the best of my knowledge and belief.

Sonya Baker
Signature

Sonya Baker
Printed Name

Engineering Technician
Title

8/19/97
Date

SURVEYOR CERTIFICATION

I hereby certify that the well location shown on this plat was plotted from field notes of actual surveys made by me or under my supervision, and that the same is true and correct to the best of my belief.

MARCH 27, 1997

Date Surveyed DMCC

Signature & Seal of Professional Surveyor

Ronald J. Eidson
Professional Surveyor
4-02-97
97-11-0276

Certificate No. JOHN WEST 676
RONALD EIDSON 3239
GARY EIDSON 12641

