

UNITED STATES
DEPARTMENT OF THE INTERIOR
BUREAU OF LAND MANAGEMENT

APPLICATION FOR PERMIT TO DRILL OR DEEPEN

1a. TYPE OF WORK

DRILL ☒

DEEPEN ☐

b. TYPE OF WELL

OIL WELL ☒

GAS WELL ☐

OTHER

SINGLE ZONE ☒

MULTIPLE ZONE ☐

2. NAME OF OPERATOR

Conoco Inc.

a. ADDRESS AND TELEPHONE NO

10 Desta Dr. Ste 100W, Midland, Tx. 79705-4500 (915) 686-6548

4. LOCATION OF WELL (Report location clearly and in accordance with any State requirements *)

At surface

1660' FNL & 1866' FWL

At proposed prod. zone

1660' FNL & 1866' FWL

Unit F

14. DISTANCE IN MILES AND DIRECTION FROM NEAREST TOWN OR POST OFFICE*

5. LEASE DESIGNATION AND SERIAL NO

LC 029405A

6 IF INDIAN, ALLOTTEE OR TRIBE NAME

7 UNIT AGREEMENT NAME

8. FARM OR LEASE NAME WELL NO

Elvis

9. API WELL NO

4

10. FIELD AND POOL, OR WILDCAT

Matamor Wildcat Strawn

11. SEC. T. R. M. OR BLK. AND SURVEY OR AREA

Sec. 20. T-17S. R-32E

12 COUNTY OR PARISH

Lea

13. STATE

NM

5. DISTANCE FROM PROPOSED*

LOCATION TO NEAREST PROPERTY OR LEASE LINE, FT. (Also to nearest drlg. unit line, if Any)

16 NO OF ACRES IN LEASE

17. NO. OF ACRES ASSIGNED TO THIS WELL

40

8. DISTANCE FROM PROPOSED LOCATION*

TO NEAREST WELL, DRILLING, COMPLETED, OR APPLIED FOR, ON THIS LEASE, FT.

19. PROPOSED DEPTH

12,550'

20. ROTARY OR CABLE TOOLS

Rotary

21. ELEVATIONS (Show whether DF, RT, GR, etc.)

3984' GR

22. APPROX. DATE WORK WILL START*

5/1/97

23

PROPOSED CASING AND CEMENTING PROGRAM

SIZE OF HOLE	GRADE, SIZE OF CASING	WEIGHT PER FOOT	SETTING DEPTH	QUANTITY OF CEMENT
14-3/4"	11-3/4"	42#	675'	565 sxs, circ.
11"	K-55 8-5/8"	32#	4600'	1600 sxs, circ
7-7/8"	L-80 5-1/2"	17#	12,550'	2160 sxs, toc @ 3600'

It is proposed to drill a vertical wellbore as an Exploratory Strawn producer according to the plan submitted in the follow attachments:

1. Well Location and Acreage Dedication Plat (C-102)
2. Proposed Well Plan Outline
3. Surface Use Plan
4. EXHIBIT A: 7.5" Quadrangle Topo Map.
5. EXHIBIT B: Standard rig layout
8. BOP & Choke Manifold Specifications
9. H2S Drilling Operations Plan.

OPER. OGRID NO. 5073

PROPERTY NO. 19491

POOL CODE 44520

EFF. DATE 4/28/97

API NO. 30-025-33949

RECEIVED

MAR 24 97

BLM
ROSWELL, NM

This is a twin well on the pad of Elvis #1 and will require no new road, pipeline, or electric line ROW's or archaeological surveys.

The undersigned accepts all applicable terms, conditions, stipulations, and restrictions concerning operations conducted on the leased land or portion thereof, as described above and as covered by BLM Bond File No. ES-0085.

IN ABOVE SPACE DESCRIBE PROPOSED PROGRAM: If proposal is to deepen give data on present productive zone and proposed new productive zone. If proposal is to drill or deepen directionally, give pertinent data on subsurface locations and measured and true vertical depths. Give blowout preventer program, if any.

24.

SIGNED

Jerry W. Hoover

TITLE

Jerry W. Hoover
Sr. Conservation Coordinator

APPROVAL SUBJECT TO

3/21/97

GENERAL REQUIREMENTS AND

SPECIAL STIPULATIONS

ATTACHED

PERMIT NO

APPROVAL DATE

Application approval does not warrant or certify that the applicant holds legal or equitable title to those rights in the subject lease which would entitle the applicant to conduct operations thereon.

CONDITIONS OF APPROVAL, IF ANY:

(ORIG. SGD.) TONY L. FERGUSON

ADM. MINERALS

APPROVED BY

TITLE

DATE

4-22-97

*See Instructions On Reverse Side

Title 18 U.S.C. Section 1001, makes it a crime for any person knowingly and willfully to make to any department or agency of the United States any false, fictitious or fraudulent statements or representations as to any matter within its jurisdiction.

DISTRICT I
P.O. Box 1980, Hobbs, NM 88240

State of New Mexico
Energy, Minerals and Natural Resources Department

Form C-102
Revised February 10, 1994
Instruction on back
Submit to Appropriate District Office
State Lease - 4 Copies
Fee Lease - 3 Copies

DISTRICT II
P.O. Drawer DD, Artesia, NM 88210

OIL CONSERVATION DIVISION

DISTRICT III
1000 Rio Brazos Rd., Aztec, NM 87410

P.O. Box 2088
Santa Fe, New Mexico 87504-2088

☐ AMENDED REPORT

WELL LOCATION AND ACREAGE DEDICATION PLAT

API Number 3D-025-33949	Pool Code NA 4452D	Pool Name Majamar Wildcat Strawn
Property Code NA 19491	Property Name Elvis	Well Number 4
GRID No. 005073	Operator Name Conoco Inc.	Elevation 3984'

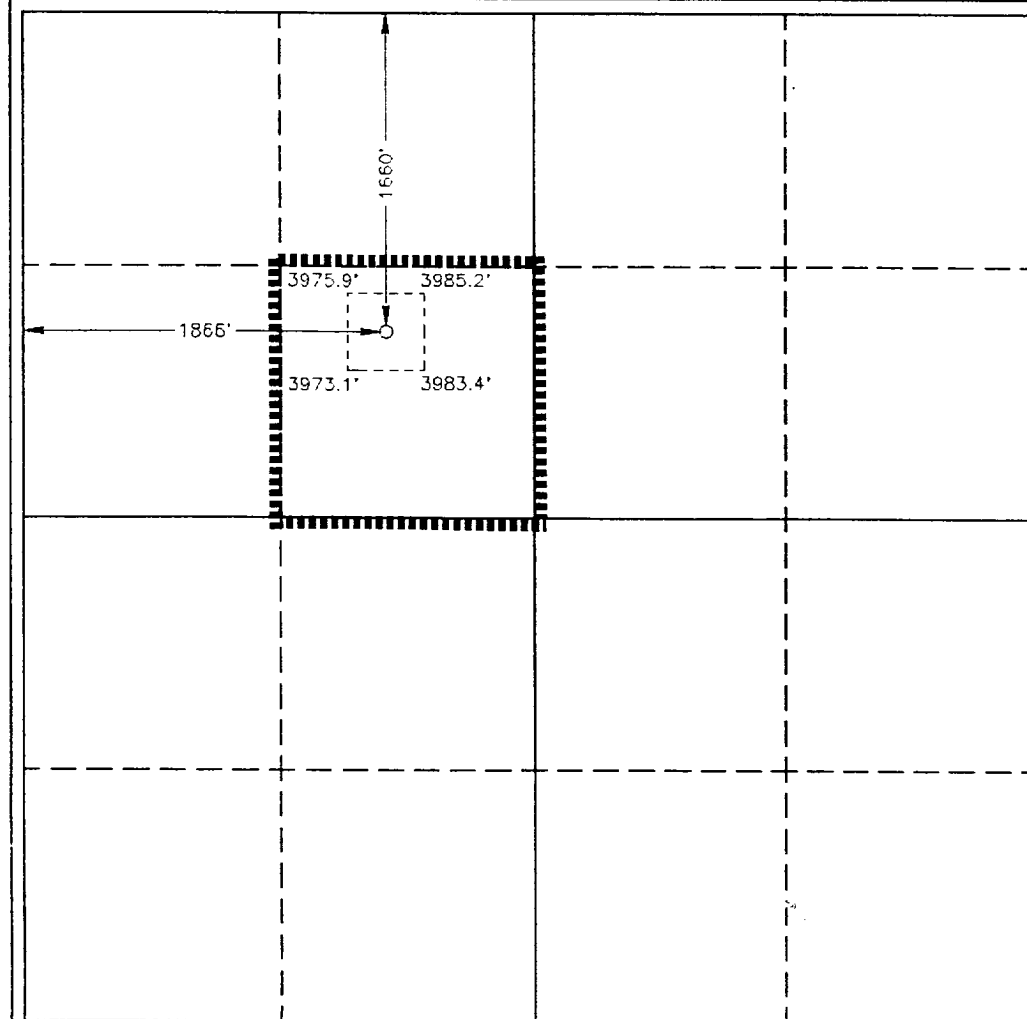
Surface Location

UL or lot No.	Section	Township	Range	Lot Idn	Feet from the	North/South line	Feet from the	East/West line	County
F	20	17 S	32 E		1660	North	1866	West	Lea

Bottom Hole Location If Different From Surface

UL or lot No.	Section	Township	Range	Lot Idn	Feet from the	North/South line	Feet from the	East/West line	County
Dedicated Acres 40	Joint or Infill	Consolidation Code	Order No.						

NO ALLOWABLE WILL BE ASSIGNED TO THIS COMPLETION UNTIL ALL INTERESTS HAVE BEEN CONSOLIDATED
OR A NON-STANDARD UNIT HAS BEEN APPROVED BY THE DIVISION

	<p>OPERATOR CERTIFICATION</p> <p>I hereby certify the the information contained herein is true and complete to the best of my knowledge and belief.</p> <p><i>Jerry W. Hoover</i> Signature Jerry W. Hoover Printed Name Sr. Conservation Coord. Title 3/21/97 Date</p> <p>SURVEYOR CERTIFICATION</p> <p>I hereby certify that the well location shown on this plat was plotted from field notes of actual surveys made by me or under my supervision, and that the same is true and correct to the best of my belief.</p> <p>March 18, 1996 Date Surveyed Signature <i>[Signature]</i> Seal <i>[Seal]</i> Professional Surveyor NEW MEXICO REGISTERED W.Q. No. 71730 Certificate No. Gary Jones 7977 BASIN SURVEYS</p>
---	--

PROPOSED WELL PLAN OUTLINE

WELL NAME **ELVIS #4**
 LOCATION **SECT. 20 T-17S R-32E LEA CO.**

TVD IN 1000'	MD	FORMATION TOPS & TYPE W/ 18' KB	DRILLING PROBLEMS	TYPE OF FORMATION EVALUATION	HOLE SIZE	CASING SIZE DEPTH	FRAC GRAD	FORMATION PRESSURE GRADIENT	MUD WT TYPE	DAYS
0			RED BEDS LOST CIRCULATION		14-3/4"	PRESET 40' CONDUCTOR		BELOW NORMAL	8.4 - 8.7 SPUD	
1		RUSTLER @ 625'								
2		YATES @ 2044'	SALT SECTION INSTALL ROT. HEAD BOWL PRIOR TO DRILLING QUEEN	MUD LOGGERS AND EQUIPMENT ON BY @ 1000' BY 1000'	11"	11-3/4" @ 675' 42# WC40 STC CIRC. CEMENT		9.0 PPG	9.0-10.0 BRINE	3
3		QUEEN @ 3071'	POSSIBLE H2S	H2S EQUIPMENT ON PRIOR TO QUEEN FORMATION						
4		SAN ANDRES @ 3751'	POSSIBLE OVERPRESSURED WITH CO2 &/OR WATER FLOOD							
5		PADDOCK @ 5231'		GR-CAL-CN-ZDL-DLL-MLL GR-CAL-BHC		8-5/8" @ 4600' 32# K-55 LTC 50' PAST B/ 9TH MASS CIRC. CEMENT 30 % OVER CALIPER			8.5-8.8 FW	17
6		TUBB @ 6541'	SEEPAGE LOSSES		7-7/8"			8.5- 9.0 PPG		
7		ABO @ 7756'							ONLY US E MIX 2 & MAGMA FIBER TO CONTROL LOSSES BELOW ABO FW GEL/	
9		WOLFCAMP @ 9007'	INSTALL MUD/GAS SEP. . ROT. HEAD & PVT EQUIP PRIOR TO DRILLING WOLFCAMP						8.5-9.0 POLY PLUS THERMPAC WL<20cc	
10		WOLFCAMP/MZ @ 9464'	POSSIBLE H2S GAS CUT MUD							
11		CISCO @ 10284'	SEEPAGE LOSSES							
12		CANYON @ 10860'								
13		STRAWN @ 11385'							8.8-9.2 WL<10cc	
14		ATOKA @ 11803'	POSSIBLE H2S /GAS CUT MUD							
15		MORROW @ 12044'	REACTIVE SHALES					BHP = 5500psi		
16		TD @ 12350'		GR-CAL-DLL-ZDL-CNL-MLL GR-CAL-BHC-AC-SL CBIL		5-1/2" @ 12550' 17# L-80 LTC TOC @ 3600'				
17										

DATE March 20, 1997

APPROVED ROGER WILLIAMSON
 ENGINEER

03/20/97
 04:36:32 PM

Well Name : Elvis #4

Location : Sect. 20 T-17-S R-32E Lea Co.

Casing Program

Surface : 11 3/4" casing in 14 3/4" Hole at 675 ft.
Intermediate : 8 5/8" casing in 11" Hole at 4600 ft.
Production : 5-1/2" casing in 7 7/8" Hole at 12,550 ft.

Cementing Program :

Surface

Lead 415 sacks Class C Mixed at 12.7 ppg
Additives 35:65:6 (Poz:Cem:Gel) + 2% CACL2 +
0.25 pps Cello Flake

Tail 150 sacks Class C Mixed at 14.8 ppg
Additives 2% CACL2

Intermediate

Lead 1450 sacks Class C Mixed at 12 ppg
Additives 16% Gel + 3% Salt + 0.3% CD-32 + 0.2% SMS

Tail 150 sacks Class C Mixed at 14.8 ppg
Additives 2% CACL2

Production

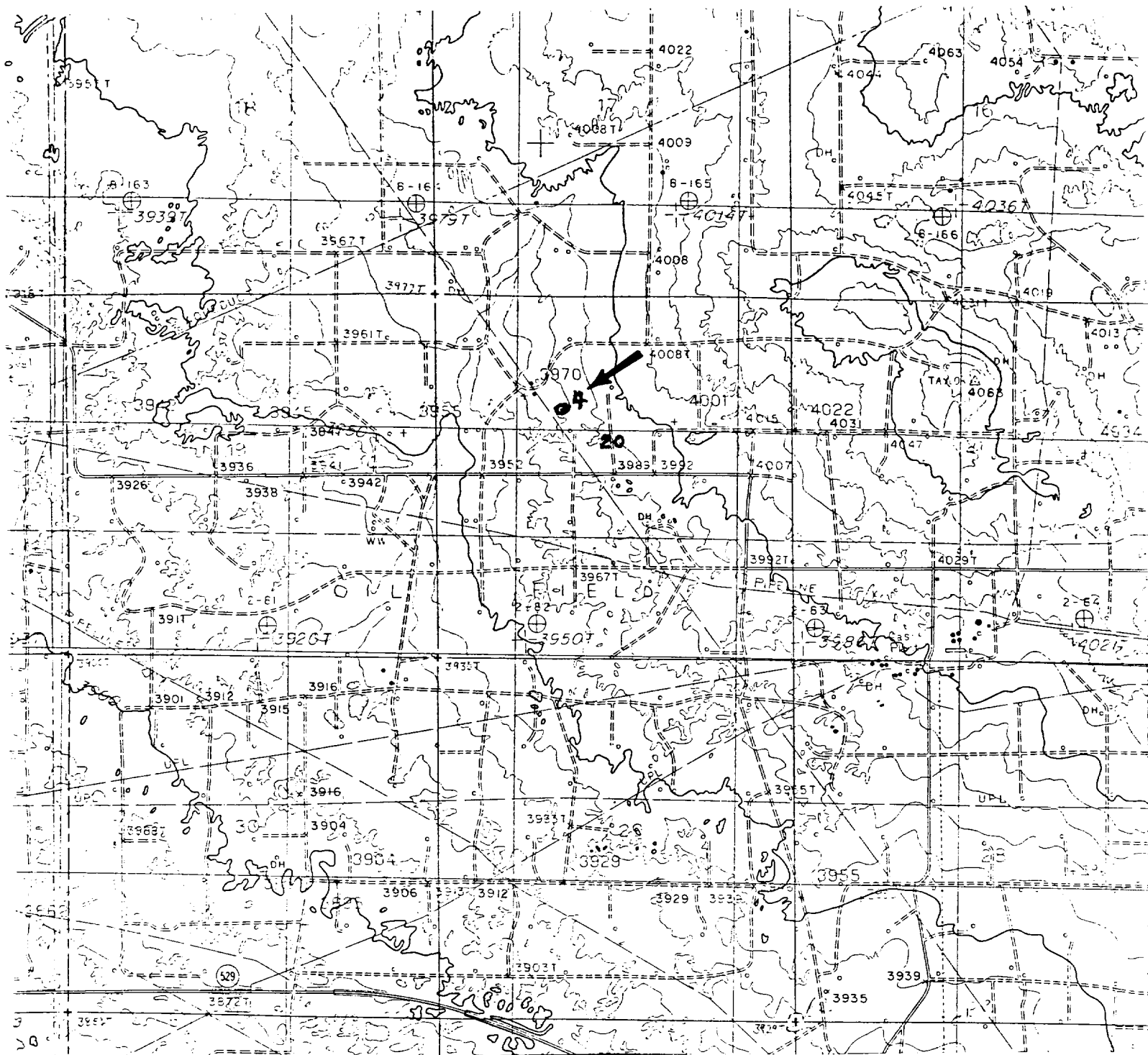
(1st Stage)

Tail 1230 sacks Class H Mixed at 15.8 ppg
Additives 1.3% FloBlok 210 + 0.3% CD-32 + 0.5% R-3 + 0.2 SMS
Free Water 0 % Fluid Loss 40 cc/30 min.

(2nd Stage)

Lead 240 sacks Class C Mixed at 12 ppg
Additives 16% Gel + 2% Salt + 0.3% CD-32 + 0.3% SMS
+ 0.4% R-3

Tail 690 sacks Class C Mixed at 14.8 ppg
Additives 1.1% FL-62 + 2% BA-90 + 3% Salt + 0.3% CD-32
+ 0.2% SMS + 0.2% R-3



Conoco Inc.
 Elvis No. 4
 1660' FNL & 1866' FWL
 Sec. 20, T-17-S, R-32-E,
 Lea County, New Mexico.

SCALE: 1"=2000'

EXHIBIT A

BASIN SURVEYS

P.O. BOX 1786-HOBBS, NEW MEXICO

2000' 0 2000' 4000 Feet



Sheet 1 of 1 Sheets

