

District I
P. O. Box 1980, Hobbs, NM 88241-1980
District II
P. O. Drawer DD, Artesia, NM 88211-0719
District III
1000 Rio Brazos Rd., Aztec, NM 87410
District IV
P. O. Box 2088, Santa Fe, NM 87504-2088

State of New Mexico
Energy, Minerals & Natural Resources Department

OIL CONSERVATION DIVISION
P. O. Box 2088
Santa Fe, NM 87504-2088

Form C-101

Revised February 10, 1994

Instructions on back
Submit to Appropriate District Office
State Lease - 6 Copies
Fee Lease - 5 Copies

☐ AMENDED REPORT

APPLICATION FOR PERMIT TO DRILL, RE-ENTER, DEEPEN, PLUGBACK, OR ADD A ZONE

¹ Operator Name and Address. The Wiser Oil Company C/O J. O. Easley, Inc. P. O. Box 245 Artesia, NM 88211-0245		² OGRID Number 022922
		³ API Number 30-025- 34063
⁴ Property Code 011844	⁵ Property Name Maljamar Grayburg Unit	⁶ Well No. 127

⁷ Surface Location

UL or lot no.	Section	Township	Range	Lot Idn	Feet from the	North/South Line	Feet from the	East/West line	County
D	4	17S	32E		660	North	660	West	Lea

⁸ Proposed Bottom Hole Location If Different From Surface

UL or lot no.	Section	Township	Range	Lot Idn	Feet from the	North/South Line	Feet from the	East/West line	County

⁹ Proposed Pool 1

Maljamar Grayburg San Andres 43329

¹⁰ Proposed Pool 2

¹¹ Work Type Code N	¹² Well Type Code P	¹³ Cable/Rotary R	¹⁴ Lease Type Code P	¹⁵ Ground Level Elevation 4162'
¹⁶ Multiple	¹⁷ Proposed Depth 5000'	¹⁸ Formation Grayburg-San Andres	¹⁹ Contractor	²⁰ Spud Date ASAP

²¹ Proposed Casing and Cement Program

Hole size	Casing Size	Casing weight/foot	Setting Depth	Sacks of Cement	Estimated TOC
12 1/4"	8 5/8" J-55	23#	493'	300 Class "C"	circulate to surf.
7 7/8"	5 1/2" J-55	17#	5000'	700 Halli. Lite	circulate to 100'
				650 Prem. Plus	above 85/8"
					casing shoe

²² Describe the proposed program. If this application is to DEEPEN or PLUG BACK give the data on the present productive zone and proposed new productive zone. Describe the blowout prevention program, if any. Use additional sheets if necessary.

Propose to drill above captioned well to a total depth of 5000' with rotary rig. If commercial production is indicated, well will be perforated and stimulated as necessary.

Blow Out Prevention: 10" Series 900 Type "E" Shaffer Hydraulic BOP will be used.

Permit Expires 1 Year From Approval
Date Unless Drilling Otherwise

²³ I hereby certify that the information given above is true and complete to the best of my knowledge and belief. Signature: <i>Michael R. Burch</i>		OIL CONSERVATION DIVISION	
Printed name: Michael R. Burch, CPL		Approved by: ORIGINAL SIGNED BY	
Title: Agent for The Wiser Oil Company		Title: GARY WINK	
Date: 7-15-97		Approval Date: _____	
Phone: 505-746-1070		Expiration Date: _____	
		Conditions of Approval: Attached <input type="checkbox"/>	

DISTRICT I
P.O. Box 1980, Hobbs, NM 88241-1980

State of New Mexico
Energy, Minerals and Natural Resources Department

Form C-102
Revised February 10, 1994
Submit to Appropriate District Office
State Lease - 4 Copies
Fee Lease - 3 Copies

DISTRICT II
P.O. Drawer DD, Artesia, NM 88211-0719

DISTRICT III
1000 Rio Brazos Rd., Aztec, NM 87410

OIL CONSERVATION DIVISION

P.O. Box 2088
Santa Fe, New Mexico 87504-2088

DISTRICT IV
P.O. Box 2068, Santa Fe, NM 87504-2088

☐ AMENDED REPORT

WELL LOCATION AND ACREAGE DEDICATION PLAT

API Number 30-025- 34063	Pool Code 43329	Pool Name Maljamar Grayburg San Andres
Property Code 11844	Property Name M.G.B.U.	Well Number 127
OGRID No. 022922	Operator Name THE WISER OIL COMPANY	Elevation 4162

Surface Location

UL or lot No.	Section	Township	Range	Lot Idn	Feet from the	North/South line	Feet from the	East/West line	County
D	4	17 S	32 E		660	NORTH	660	WEST	LEA

Bottom Hole Location If Different From Surface

UL or lot No.	Section	Township	Range	Lot Idn	Feet from the	North/South line	Feet from the	East/West line	County
Dedicated Acres 40.40	Joint or Infill	Consolidation Code	Order No.						

NO ALLOWABLE WILL BE ASSIGNED TO THIS COMPLETION UNTIL ALL INTERESTS HAVE BEEN CONSOLIDATED
OR A NON-STANDARD UNIT HAS BEEN APPROVED BY THE DIVISION

	OPERATOR CERTIFICATION <i>I hereby certify the the information contained herein is true and complete to the best of my knowledge and belief.</i> <u>Michael R. Burch</u> Signature Michael R. Burch, CPL Printed Name Agent for The Wiser Oil Company Title 7-15-97 Date		
	SURVEYOR CERTIFICATION <i>I hereby certify that the well location shown on this plat was plotted from field notes of actual surveys made by me or under my supervision, and that the same is true and correct to the best of my belief.</i> JUNE 26, 1997 Date Surveyed Signature & Seal of Professional Surveyor W.O. Num. 97-11-1076 Certificate No. JOHN W. WEST, 676 RONALD J. EIDSON, 3239 GARY G. EIDSON, 12641		

DISTRICT I
P.O. Box 1980, Hobbs, NM 88241-1980

State of New Mexico
Energy, Minerals and Natural Resources Department

Form C-102
Revised February 10, 1994
Submit to Appropriate District Office
State Lease - 4 Copies
Fee Lease - 3 Copies

DISTRICT II
P.O. Drawer DD, Artesia, NM 88211-0719

DISTRICT III
1000 Rio Brazos Rd., Aztec, NM 87410

OIL CONSERVATION DIVISION

P.O. Box 2088
Santa Fe, New Mexico 87504-2088

DISTRICT IV
P.O. Box 2088, Santa Fe, NM 87504-2088

☐ AMENDED REPORT

WELL LOCATION AND ACREAGE DEDICATION PLAT

API Number	Pool Code	Pool Name
Property Code	Property Name M.G.B.U.	Well Number 127
OGRID No.	Operator Name THE WISER OIL COMPANY	Elevation 4162

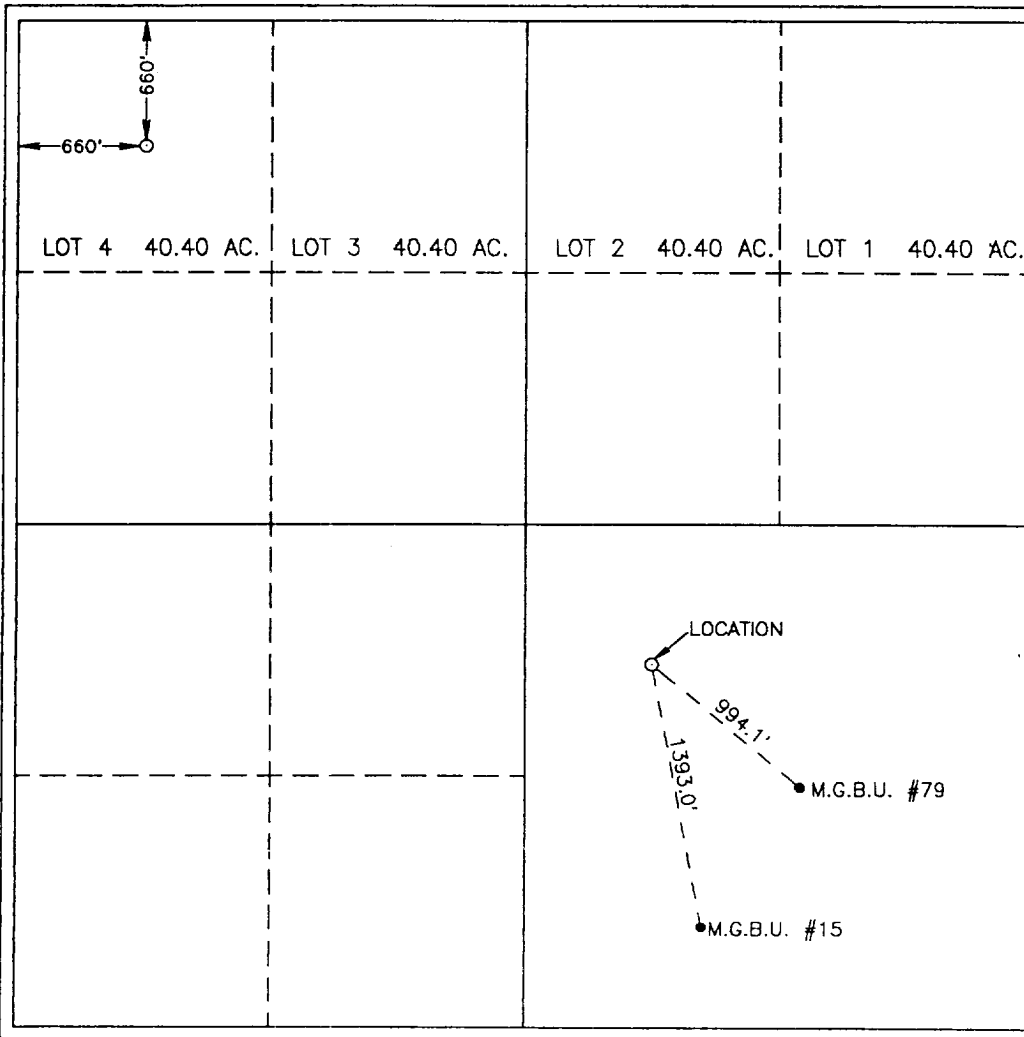
Surface Location

UL or lot No.	Section	Township	Range	Lot Idn	Feet from the	North/South line	Feet from the	East/West line	County
D	4	17 S	32 E		660	NORTH	660	WEST	LEA

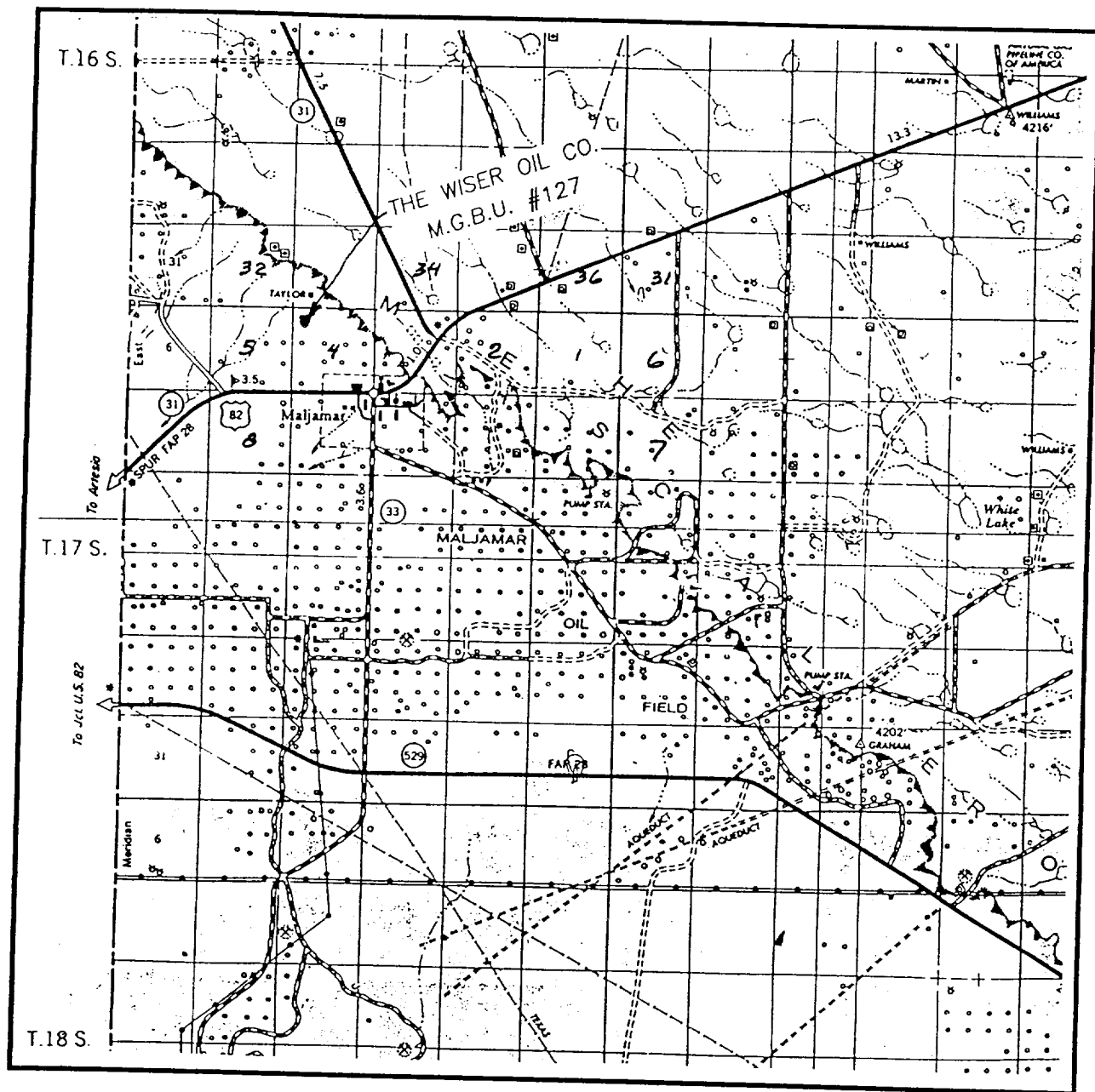
Bottom Hole Location If Different From Surface

UL or lot No.	Section	Township	Range	Lot Idn	Feet from the	North/South line	Feet from the	East/West line	County
Dedicated Acres	Joint or Infill	Consolidation Code	Order No.						

NO ALLOWABLE WILL BE ASSIGNED TO THIS COMPLETION UNTIL ALL INTERESTS HAVE BEEN CONSOLIDATED
OR A NON-STANDARD UNIT HAS BEEN APPROVED BY THE DIVISION

	<p>OPERATOR CERTIFICATION</p> <p>I hereby certify the the information contained herein is true and complete to the best of my knowledge and belief.</p> <p>Signature _____</p> <p>Printed Name _____</p> <p>Title _____</p> <p>Date _____</p> <p>SURVEYOR CERTIFICATION</p> <p>I hereby certify that the well location shown on this plat was plotted from field notes of actual surveys made by me or under my supervision, and that the same is true and correct to the best of my belief.</p> <p>JUNE 26, 1997</p> <p>Date Surveyed _____ JLP</p> <p>Signature & Seal of Professional Surveyor _____</p> <p>W.O. Num. 97-11-1076</p> <p>Certificate No. JOHN W. WEST, 676 RONALD J. EIDSON, 3239 GARY G. EIDSON, 12641</p>
-------------------------------------------------------------------------------------	---------------------------------------------------------------------------------------------------------------------------------------------------------------------------------------------------------------------------------------------------------------------------------------------------------------------------------------------------------------------------------------------------------------------------------------------------------------------------------------------------------------------------------------------------------------------------------------------------------------------------------------------------------------------------------------------------------------------------------------------------------

VICINITY MAP

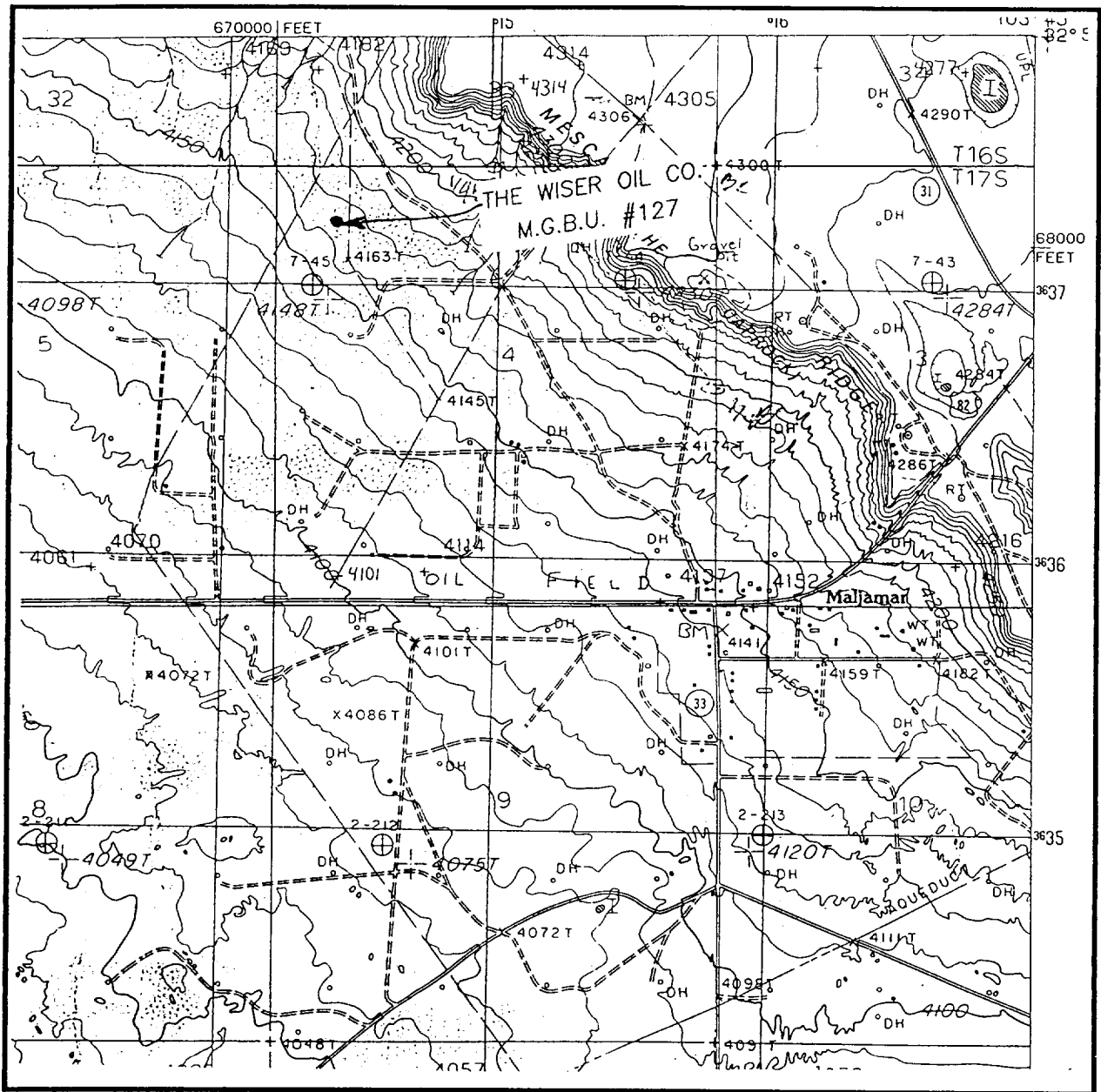


SCALE: 1" = 2 MILES

SEC. 4 TWP. 17-S RGE. 32-E
 SURVEY N.M.P.M.
 COUNTY LEA
 DESCRIPTION 660' FNL & 660' FWL
 ELEVATION 4162'
 OPERATOR THE WISER OIL CO.
 LEASE M.G.B.U. #127

JOHN WEST ENGINEERING
HOBBS, NEW MEXICO
(505) 393-3117

LOCATION VERIFICATION MAP



SCALE: 1" = 2000'

CONTOUR INTERVAL - 10'

SEC. 4 TWP. 17-S RGE. 32-E

SURVEY N.M.P.M.

COUNTY LEA

DESCRIPTION 660' FNL & 660' FWL

ELEVATION 4162'

OPERATOR THE WISER OIL CO.

LEASE M.G.B.U. #127

U.S.G.S. TOPOGRAPHIC MAP

MALJAMAR, N.M.

JOHN WEST ENGINEERING
HOBBS, NEW MEXICO

(505) 393-3117