

District I
PO Box 1980, Hobbs, NM 88241-1980
District II
PO Drawer DD, Artesia, NM 88211-0719
District III
1000 Rio Brazos Rd., Aztec, NM 87410
District IV
PO Box 2088, Santa Fe, NM 87504-2088

State of New Mexico
Energy, Minerals & Natural Resources Department

OIL CONSERVATION DIVISION
PO Box 2088
Santa Fe, NM 87504-2088

Form C-101
Revised February 10, 1994
Instructions on back
Submit to Appropriate District Office
State Lease - 6 Copies
Fee Lease - 5 Copies

☐ AMENDED REPORT

APPLICATION FOR PERMIT TO DRILL, RE-ENTER, DEEPEN, PLUGBACK, OR ADD A ZONE

¹ Operator Name and Address. Charles B. Gillespie, Jr. P.O. Box 8 Midland, Texas 79702		¹ OGRID Number 004136
⁴ Property Code 21108	⁵ Property Name Snyder "A" Com	³ API Number 30 - 0 25-34073
		⁶ Well No. 1

⁷ Surface Location

UL or lot no.	Section	Township	Range	Lot Idn	Feet from the	North/South line	Feet from the	East/West line	County
T 17	6	16S	36E	17	1980	South	874	West	Lea

⁸ Proposed Bottom Hole Location If Different From Surface

UL or lot no.	Section	Township	Range	Lot Idn	Feet from the	North/South line	Feet from the	East/West line	County
⁹ Proposed Pool 1 Undesignated Strawn									
¹⁰ Proposed Pool 2									

¹¹ Work Type Code N	¹² Well Type Code O	¹³ Cable/Rotary R	¹⁴ Lease Type Code P	¹⁵ Ground Level Elevation 3959
¹⁶ Multiple No	¹⁷ Proposed Depth 11800	¹⁸ Formation Atoka	¹⁹ Contractor	²⁰ Spud Date

²¹ Proposed Casing and Cement Program

Hole Size	Casing Size	Casing weight/foot	Setting Depth	Sacks of Cement	Estimated TOC
17-1/2"	13-3/8"	54	400	440	Surf
11"	8-5/8"	32	4750	900	Surf
7-7/8"	5-1/2"	17	11800	750	9500

²² Describe the proposed program. If this application is to DEEPEN or PLUG BACK give the data on the present productive zone and proposed new productive zone. Describe the blowout prevention program, if any. Use additional sheets if necessary.

We propose to drill and test to Atoka and intermediate formations. Approximately 400' of surface casing will be set and cement circulated. Approximately 4750' of intermediate casing will be set and cemented back to surf csg. Production casing will be set to TD and cement back to approximately 9500'.

Mud Program: Fresh water, native mud to 10,000'. Mud up at 10,000' with fresh water gel.

BOP Program: BOP's will be installed at offset and tested daily.

²³ I hereby certify that the information given above is true and complete to the best of my knowledge and belief.

Signature:

Mark Mladenka

Printed name:

Mark Mladenka

Title:

Production Manager

Date:

Phone:

OIL CONSERVATION DIVISION

Approved by:

ORIGINAL SIGNED BY CHRIS WILLIAMS

Title:

DISTRICT I SUPERVISOR

Approval

JUL 30 1997

Expiration Date:

Conditions of Approval:

Attached ☐

Permit Expires 1 Year From Approval
Date Unless Drilling Indefinite

DISTRICT I
P.O. Box 1980, Hobbs, NM 88241-1980

State of New Mexico
Energy, Minerals and Natural Resources Department

Form C-102
Revised February 10, 1994
Submit to Appropriate District Office
State Lease - 4 Copies
Fee Lease - 3 Copies

DISTRICT II
P.O. Drawer DD, Artesia, NM 88211-0719

OIL CONSERVATION DIVISION

P.O. Box 2088
Santa Fe, New Mexico 87504-2088

DISTRICT III
1000 Rio Brazos Rd., Artec, NM 87410

☐ AMENDED REPORT

DISTRICT IV
P.O. Box 2068, Santa Fe, NM 87504-2068

WELL LOCATION AND ACREAGE DEDICATION PLAT

API Number 30-025-34073	Pool Code 40875	Pool Name W Lovington Undesignated Strawn
Property Code 21108	Property Name SNYDER "A" COM.	Well Number 1
OGRID No. 004136	Operator Name CHARLES B. GILLESPIE, JR.	Elevation 3959

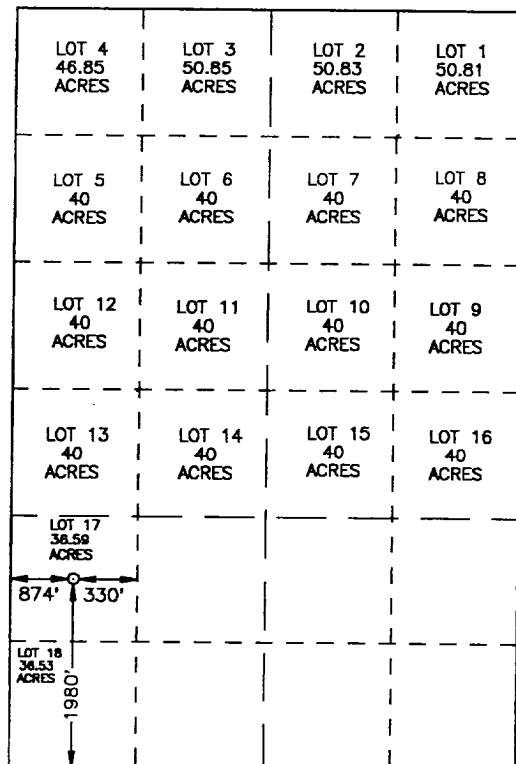
Surface Location

UL or lot No.	Section	Township	Range	Lot Idn	Feet from the	North/South line	Feet from the	East/West line	County
17	6	16 S	36 E		1980	SOUTH	874	WEST	LEA

Bottom Hole Location If Different From Surface

UL or lot No.	Section	Township	Range	Lot Idn	Feet from the	North/South line	Feet from the	East/West line	County
Dedicated Acres 73.12	Joint or Infill	Consolidation Code	Order No.						

NO ALLOWABLE WILL BE ASSIGNED TO THIS COMPLETION UNTIL ALL INTERESTS HAVE BEEN CONSOLIDATED
OR A NON-STANDARD UNIT HAS BEEN APPROVED BY THE DIVISION



SCALE: 1"=2000'

OPERATOR CERTIFICATION

I hereby certify that the information
contained herein is true and complete to the
best of my knowledge and belief.

Mark Mladenka
Signature
Mark Mladenka
Printed Name
Production Manager
Title
Date

SURVEYOR CERTIFICATION

I hereby certify that the well location shown
on this plat was plotted from field notes of
actual surveys made by me or under my
supervision, and that the same is true and
correct to the best of my belief.

JULY 15, 1997

Date Surveyed
Signature & Seal of
Professional Surveyor
JLP
7-17-97
W.O. Num. 97-11181
Certificate No. JOHN W. WEST, 676
J. EIDSON, 3239