

District I
PO Box 1980, Hobbs, NM 88241-1980
District II
PO Drawer DD, Artesia, NM 88211-0719
District III
1000 Rio Brazos Rd., Aztec, NM 87410
District IV
PO Box 2088, Santa Fe, NM 87504-2088

State of New Mexico
Energy, Minerals & Natural Resources Department

OIL CONSERVATION DIVISION
PO Box 2088
Santa Fe, NM 87504-2088

Form C-101

Revised February 10, 1994

Instructions on back

Submit to Appropriate District Office

State Lease - 6 Copies

Fee Lease - 5 Copies

☐ AMENDED REPORT

APPLICATION FOR PERMIT TO DRILL, RE-ENTER, DEEPEN, PLUGBACK, OR ADD A ZONE

Operator Name and Address: Rand Paulson oil Company, Inc. 508 W. Wall Street, Ste. 100 Midland, TX. 79701		OGRID Number 159123
Property Code 21546	Property Name State 23	API Number 30-025-34142
		Well No. 1

Surface Location									
UL or lot no.	Section	Township	Range	Lot Ida	Feet from the	North/South line	Feet from the	East/West line	County
M	23	15-S	36-E		330	South	760	West	Lea

Proposed Bottom Hole Location If Different From Surface									
UL or lot no.	Section	Township	Range	Lot Ida	Feet from the	North/South line	Feet from the	East/West line	County
Proposed Pool 1 Dean Penn Permo Penn					Proposed Pool 2				

Work Type Code N	Well Type Code 0	Cable/Rotary R	Lease Type Code S	Ground Level Elevation 3875'
Multiple No	Proposed Depth 12,000'	Formation Strawn	Contractor Tmbr/Suarp	Spud Date 9-15-97

Proposed Casing and Cement Program					
Hole Size	Casing Size	Casing weight/foot	Setting Depth	Sacks of Cement	Estimated TOC
17 1/2"	13 3/8"	48	450	450	Surf
11"	8 5/8"	32	5000	1100	Surf
7 7/8"	5 1/2"	17	12,000	800	7500

Describe the proposed program. If this application is to DEEPEN or PLUG BACK give the data on the present productive zone and proposed new productive zone. Describe the blowout prevention program, if any. Use additional sheets if necessary.

Propose to drill a Strawn well to 12,000'. Cement will be circulated to surface on 13 3/8" and 8 5/8" casing. Plan to test significant shows and evaluate with adequate logging program. Completion or abandonment will be performed in accordance with prudent practices and regulatory requirements. A double ram series 900 BOP and choke manifold will be used from 8 5/8" casing to total depth.

I hereby certify that the information given above is true and complete to the best of my knowledge and belief. Signature: <i>[Signature]</i>		OIL CONSERVATION DIVISION	
Printed name: O. H. Routh		Approved by: ORIGINAL SIGNED BY	
Title: Agent		Title: GARY WINK FIELD REP. II	
Date: 9-10-97	Phone: 915-687-0323	Approval Date: 9-8-97	Expiration Date:
		Conditions of Approval: Attached <input type="checkbox"/>	

Permit Expires 1 Year From Approval,
Date Unless Drilling Underway

DISTRICT I
P.O. Box 1980, Hobbs, NM 88241-1980

State of New Mexico
Energy, Minerals and Natural Resources Department

Form C-102
Revised February 10, 1994
Submit to Appropriate District Office
State Lease - 4 Copies
Fee Lease - 3 Copies

DISTRICT II
P.O. Drawer DD, Artesia, NM 86211-0719

DISTRICT III
1000 Rio Brazos Rd., Aztec, NM 87410

DISTRICT IV
P.O. BOX 2088, SANTA FE, N.M. 87504-2088

OIL CONSERVATION DIVISION
P.O. Box 2088
Santa Fe, New Mexico 87504-2088

☐ AMENDED REPORT

WELL LOCATION AND ACREAGE DEDICATION PLAT

API Number 30-025-34142	Pool Code 16720	Pool Name DEAN PENN
Property Code 21546	Property Name STATE 23	Well Number 1
OGRID No. 159123	Operator Name RAND PAULSON OIL COMPANY, INC.	Elevation 3875

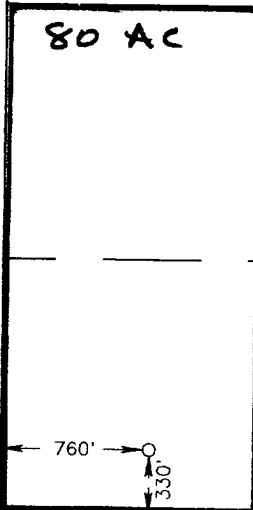
Surface Location

UL or lot No. M	Section 23	Township 15 S	Range 36 E	Lot Idn	Feet from the 330	North/South line SOUTH	Feet from the 760	East/West line WEST	County LEA
--------------------	---------------	------------------	---------------	---------	----------------------	---------------------------	----------------------	------------------------	---------------

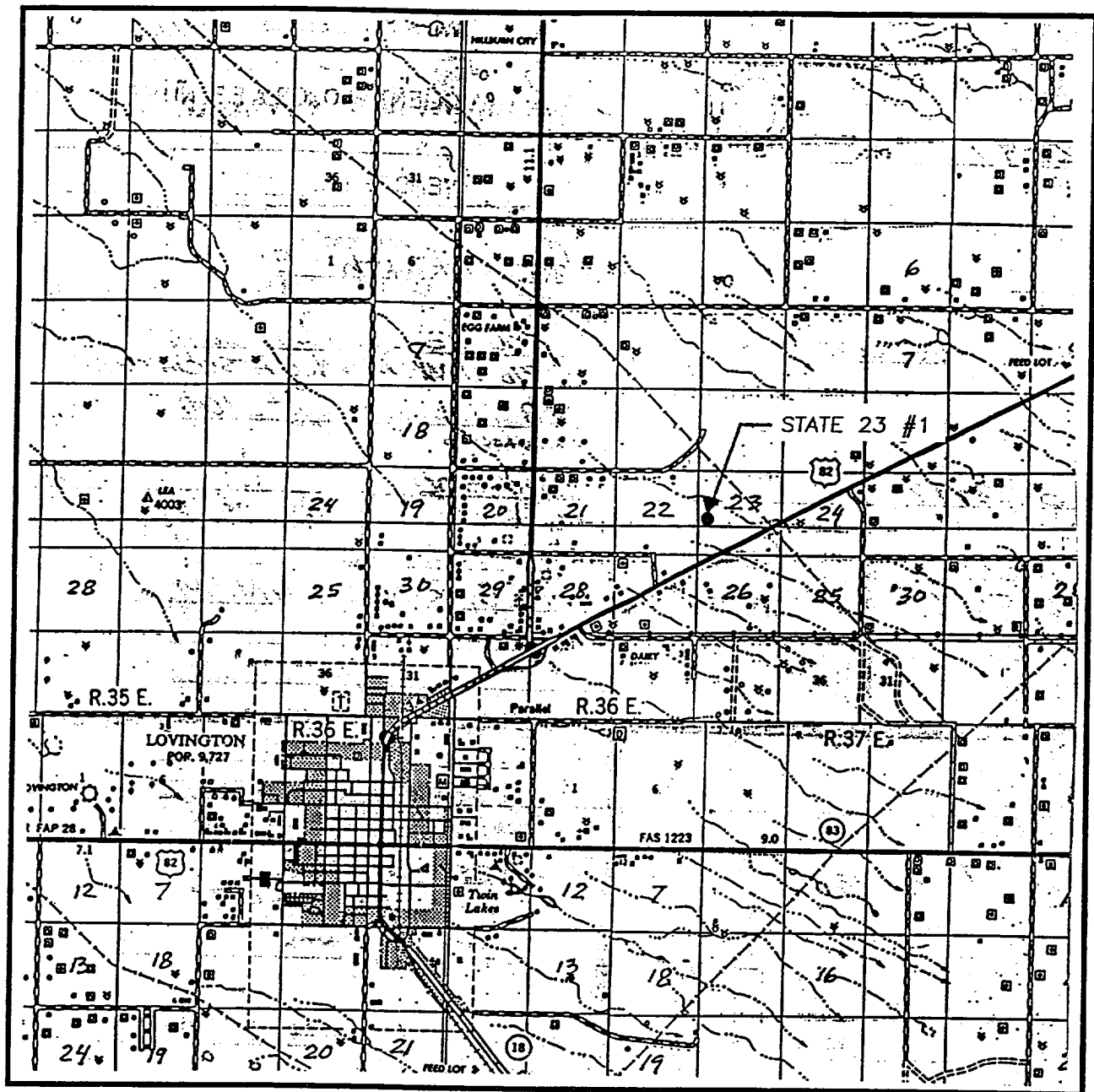
Bottom Hole Location If Different From Surface

UL or lot No.	Section	Township	Range	Lot Idn	Feet from the	North/South line	Feet from the	East/West line	County
Dedicated Acres 80	Joint or Infill N	Consolidation Code	Order No.						

NO ALLOWABLE WILL BE ASSIGNED TO THIS COMPLETION UNTIL ALL INTERESTS HAVE BEEN CONSOLIDATED
OR A NON-STANDARD UNIT HAS BEEN APPROVED BY THE DIVISION

					OPERATOR CERTIFICATION I hereby certify the the information contained herein is true and complete to the best of my knowledge and belief. Signature O.H. ROUTH Printed Name AGENT Title 9-16-97 Date	
					SURVEYOR CERTIFICATION I hereby certify that the well location shown on this plat was plotted from field notes of actual surveys made by me or under my supervision, and that the same is true and correct to the best of my belief. SEPTEMBER 10, 1997 Date Surveyed Signature & Seal of Professional Surveyor RONALD J. EIDSON 9-11-97 Certificate No. JOHN W. WEST 676 RONALD J. EIDSON 3239 GARY EIDSON 12641	

VICINITY MAP

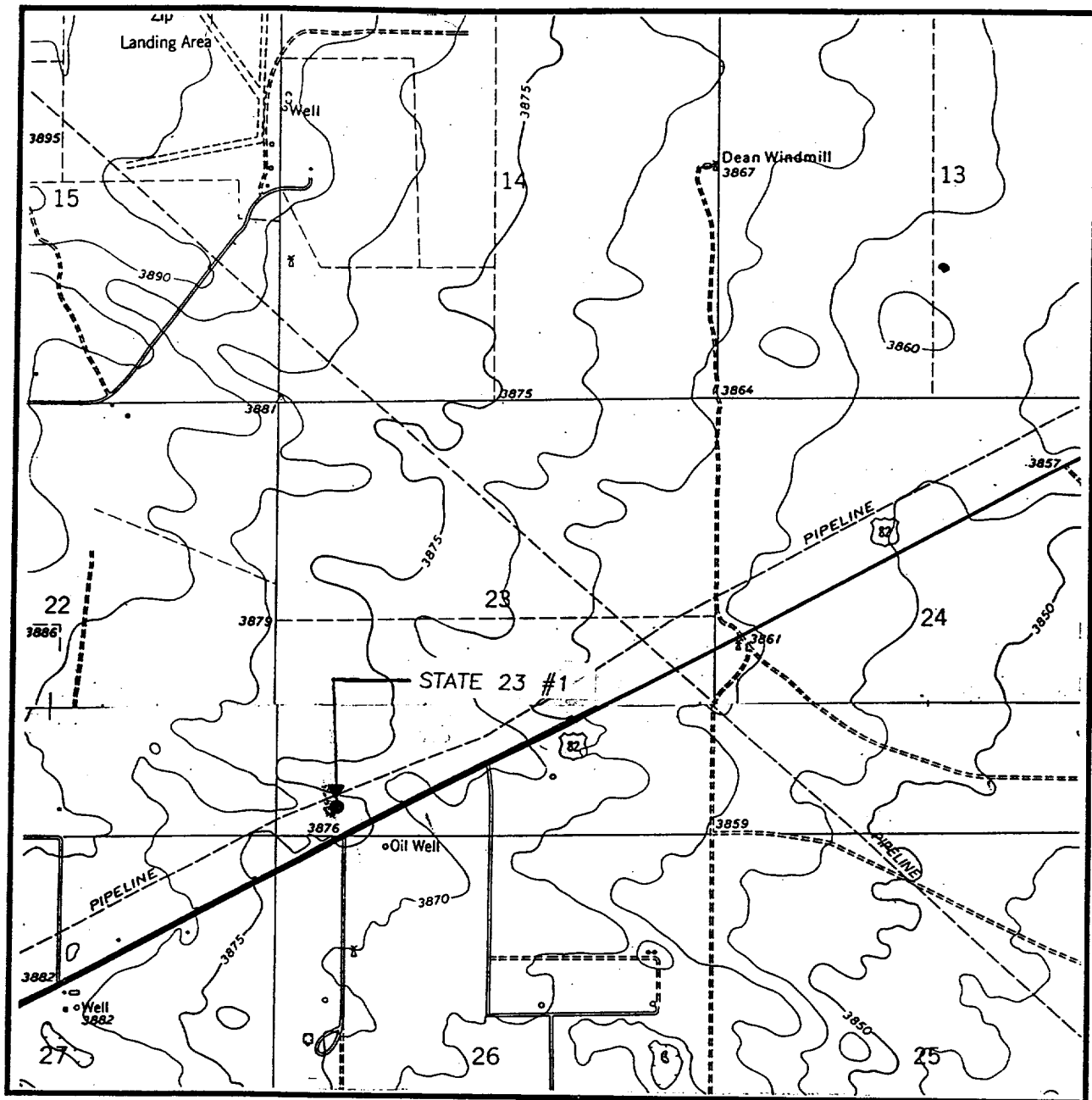


SCALE: 1" = 2 MILES

SEC. 23 TWP. 15-S RGE. 36-E
 SURVEY N.M.P.M.
 COUNTY LEA
 DESCRIPTION 330' FSL & 760' FWL
 ELEVATION 3875
 OPERATOR RAND PAULSON
OIL COMPANY, INC.
 LEASE STATE 23

JOHN WEST ENGINEERING
HOBBS, NEW MEXICO
(505) 393-3117

LOCATION VERIFICATION MAP



SCALE: 1" = 2000'

CONTOUR INTERVAL:
LOVINGTON - 5'
HILLBURN CITY - 5'

SEC. 23 TWP. 15-S RGE. 36-E

SURVEY _____ N.M.P.M.

COUNTY _____ LEA

DESCRIPTION 330' FSL & 760' FWL

ELEVATION _____ 3875

OPERATOR RAND PAULSON
OIL COMPANY, INC.

LEASE _____ STATE 23

U.S.G.S. TOPOGRAPHIC MAP
LOVINGTON, HILLBURN CITY, N.M.

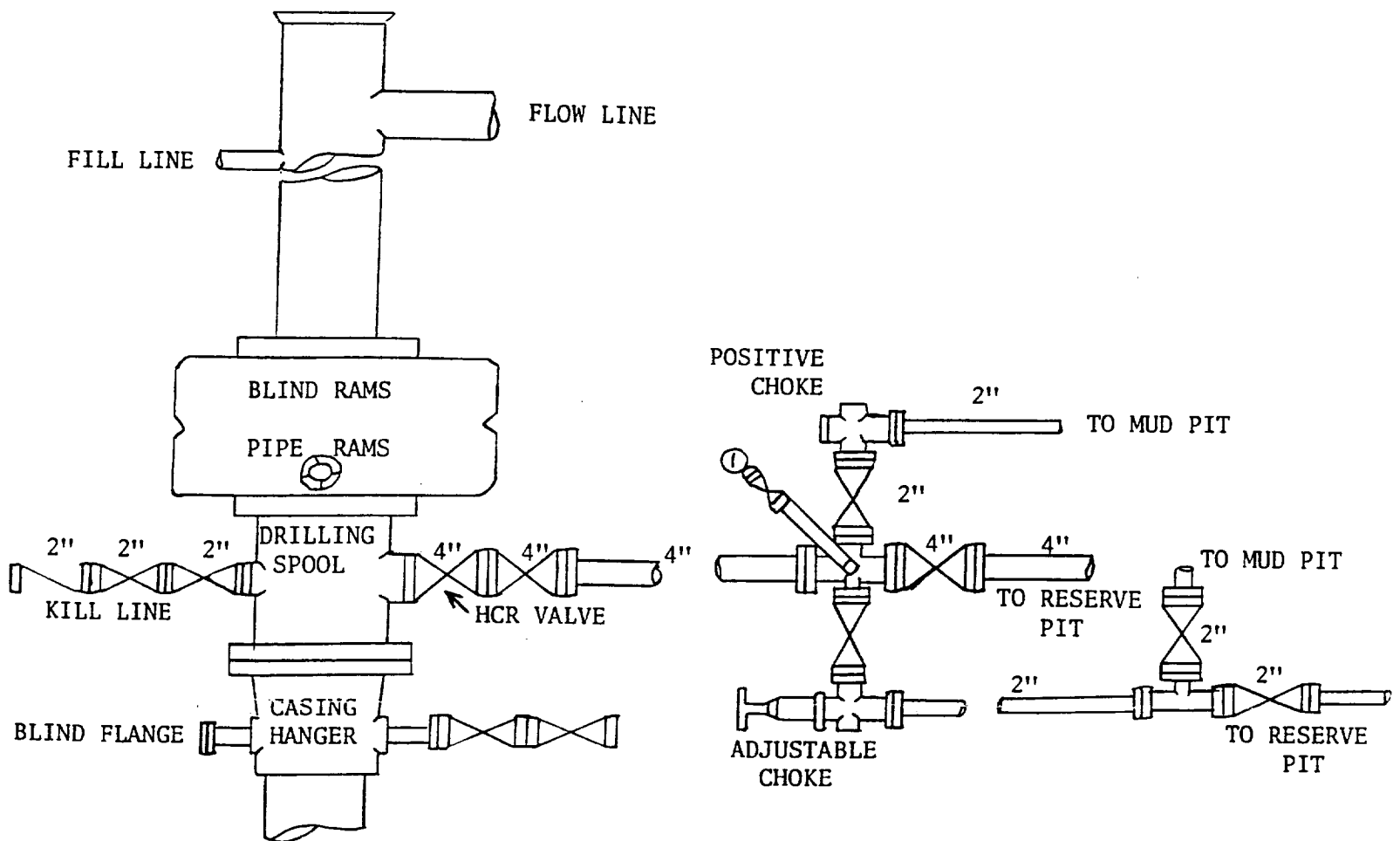
JOHN WEST ENGINEERING
HOBBS, NEW MEXICO
(505) 393-3117

1 - 7 station Koomey Accumulator

1 - Koomey Remote Stand

5000 WP Manifold

1 - 10° Shaeffer Double BOP 900 Series, 3000 WP



RAND PAULSON OIL COMPANY, INC
STATE 23 NO. 1
SEC 23 T-15-S R-36-E
LEA COUNTY, NEW MEXICO

BOP SKETCH