

DISTRICT I
P.O. Box 1880 Hobbs, NM 88241-1880

State of New Mexico
Energy, Minerals and Natural Resources Department

Form C-102
Revised February 10, 1994
Submit to Appropriate District Office
State Lease - 4 Copies
Fee Lease - 3 Copies

DISTRICT II
P.O. Drawer 88, Artesia, NM 88211-0719

OIL CONSERVATION DIVISION

DISTRICT III
1000 Rio Brazos Rd., Artesia, NM 87410

P.O. Box 2088
Santa Fe, New Mexico 87504-2088

☐ AMENDED REPORT

DISTRICT IV
P.O. Box 2088, Santa Fe, NM 87504-2088

WELL LOCATION AND ACREAGE DEDICATION PLAT

API Number 30-025-34216	Pool Code 40760	Pool Name N. E. LOVINGTON-PENN
Property Code 22135	Property Name MINNIE "6"	Well Number 1
OGED No. 147179	Operator Name CHESAPEAKE OPERATING, INC.	Elevation 3862

Surface Location

UL or lot No.	Section	Township	Range	Lot Idn	Feet from the	North/South line	Feet from the	East/West line	County
2	6	16 S	37 E		916	NORTH	1991	EAST	LEA

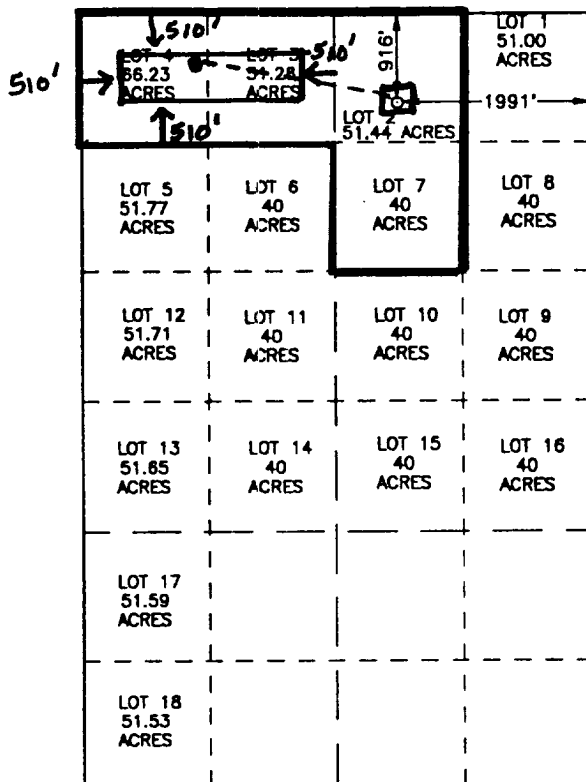
Bottom Hole Location If Different From Surface

UL or lot No.	Section	Township	Range	Lot Idn	Feet from the	North/South line	Feet from the	East/West line	County
4	6	16S	37E		510	North	1316	West	LEA

Dedicated Acres	Joint or Infill	Consolidation Code	Order No.
208.95			

NO ALLOWABLE WILL BE ASSIGNED TO THIS COMPLETION UNTIL ALL INTERESTS HAVE BEEN CONSOLIDATED
OR A NON-STANDARD UNIT HAS BEEN APPROVED BY THE DIVISION

NAD27
SPC
NME
X=820976=E
Y=716089=N



SCALE: 1"=2000'

OPERATOR CERTIFICATION

I hereby certify the the information
contained herein is true and complete to the
best of my knowledge and belief.

Barbara J. Bale
Signature

Barbara J. Bale
Printed Name

Regulatory Analyst
Title

07/14/98
Date

SURVEYOR CERTIFICATION

I hereby certify that the well location shown
on this plat was plotted from field notes of
actual surveys made by me or under my
supervision, and that the same is true and
correct to the best of my belief.

NOVEMBER 10, 1997

Date Surveyed JLP
Signature & Seal of
Professional Surveyor

Ronald J. Edson
W.O. Num. 97-11-1851

Certificate No. JOHN W. WEST, 676
RONALD J. EDSON, 3239