

UNITED STATES  
DEPARTMENT OF THE INTERIOR  
BUREAU OF LAND MANAGEMENT

SUBMIT IN **PLICATE\***  
(Other Instructions on reverse side)

FORM APPROVED  
OMB NO. 1004-0136  
Expires: February 28, 1995

**APPLICATION FOR PERMIT TO DRILL OR DEEPEN**

1a. TYPE OF WORK  
DRILL ☒ DEEPEN ☐

b. TYPE OF WELL  
OIL WELL ☒ GAS WELL ☐ OTHER ☐ SINGLE ZONE ☐ MULTIPLE ZONE ☐

2. NAME OF OPERATOR  
Lynx Petroleum Consultants, Inc.

3. ADDRESS AND TELEPHONE NO.  
P.O. Box 1708, Hobbs, NM 88241 (505) 392-6950

4. LOCATION OF WELL (Report location clearly and in accordance with any State requirements\*)  
At surface 1180' FSL and 2330' FWL Unit 2  
At proposed prod. zone Same UNORTHODOX LOCATION  
SUBJECT TO LIKE APPROVAL BY STATE

14. DISTANCE IN MILES AND DIRECTION FROM NEAREST TOWN OR POST OFFICE\*  
1.5 miles south of Maljamar, NM

15. DISTANCE FROM PROPOSED\* LOCATION TO NEAREST PROPERTY OR LEASE LINE, FT. (Also to nearest drlg. unit line, if any)  
1180'

16. NO. OF ACRES IN LEASE  
400

17. NO. OF ACRES ASSIGNED TO THIS WELL  
40

18. DISTANCE FROM PROPOSED LOCATION\* TO NEAREST WELL, DRILLING, COMPLETED, OR APPLIED FOR, ON THIS LEASE, FT.  
825'

19. PROPOSED DEPTH  
4400'

20. ROTARY OR CABLE TOOLS  
Rotary

21. ELEVATIONS (Show whether DF, RT, GR, etc.)  
4030' GR

22. APPROX. DATE WORK WILL START\*  
2-10-98

**PROPOSED CASING AND CEMENTING PROGRAM**

SIZE OF HOLE	GRADE, SIZE OF CASING	WEIGHT PER FOOT	SETTING DEPTH	QUANTITY OF CEMENT
12 1/4"	8 5/8" K-55	24#	850'	300 sxs circ. WITH
7 7/8"	5 1/2" K-55	15.5 # & 17#	4400'	750 sxs

It is proposed to drill a straight hole to a T.D. of 4400' to test the Grayburg-San Andres. Casing will be run through the deepest zone that appears commercial. A normal completion is proposed, perforate, stimulate and test. See attached "Supplemental Drilling Data", Surface Use Plan and BOP information.

An application for a Non-Standard Location will be filed with the OCD.

APPROVAL SUBJECT TO  
GENERAL REQUIREMENTS AND  
SPECIAL STIPULATIONS  
ATTACHED

13645  
5988  
43329  
2/5/98  
30-025-34291

RECEIVED  
JAN 26 1998  
BLM  
ROSWELL, NM  
ack  
1/21/98

IN ABOVE SPACE DESCRIBE PROPOSED PROGRAM: If proposal is to deepen, give data on present productive zone and proposed new productive zone. If proposal is to drill or deepen directionally, give pertinent data on subsurface locations and measured and true vertical depths. Give blowout preventer program, if any.

24. SIGNED Marc Wine TITLE President DATE 12/31/97

(This space for Federal or State office use)

PERMIT NO. \_\_\_\_\_ APPROVAL DATE \_\_\_\_\_

Application approval does not warrant or certify that the applicant holds legal or equitable title to those rights in the subject lease which would entitle the applicant to conduct operations thereon. CONDITIONS OF APPROVAL, IF ANY:

APPROVED BY \_\_\_\_\_ TITLE MANAGER DATE \_\_\_\_\_

\*See Instructions On Reverse Side

DISTRICT I  
P.O. Box 1980, Hobbs, NM 88241-1980

State of New Mexico  
Energy, Minerals and Natural Resources Department

Form C-102  
Revised February 10, 1994  
Submit to Appropriate District Office  
State Lease - 4 Copies  
Fee Lease - 3 Copies

DISTRICT II  
P.O. Drawer DD, Artesia, NM 88211-0719

DISTRICT III  
1000 Rio Brazos Rd., Aztec, NM 87410

DISTRICT IV  
P.O. BOX 2088, SANTA FE, N.M. 87504-2088

OIL CONSERVATION DIVISION

P.O. Box 2088  
Santa Fe, New Mexico 87504-2088

☐ AMENDED REPORT

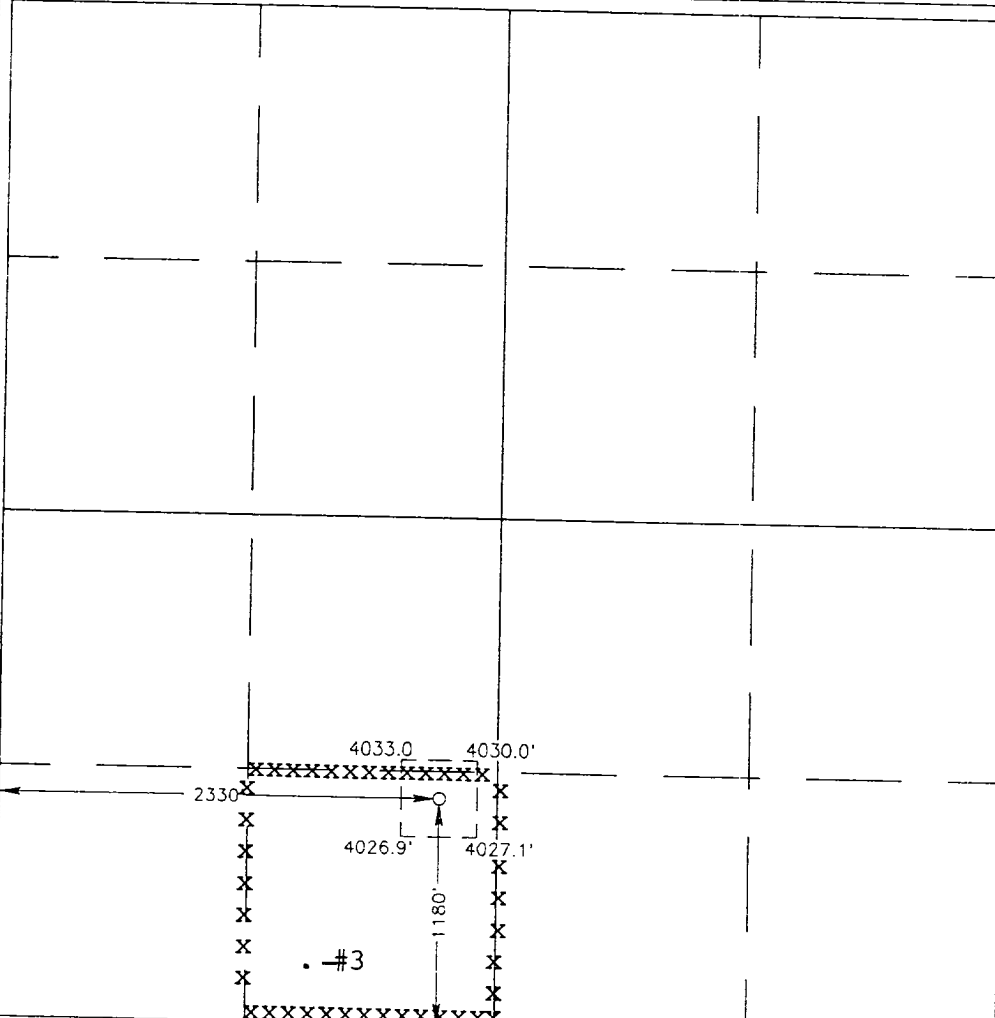
WELL LOCATION AND ACREAGE DEDICATION PLAT

API Number <b>3D-025-34291</b>	Pool Code <b>43329</b>	Pool Name <b>Maljamar GB-SA</b>
Property Code <b>005988</b>	Property Name <b>LYNX FEDERAL</b>	Well Number <b>10</b>
OGRID No. <b>013645</b>	Operator Name <b>LYNX PETROLEUM</b>	Elevation <b>4030</b>

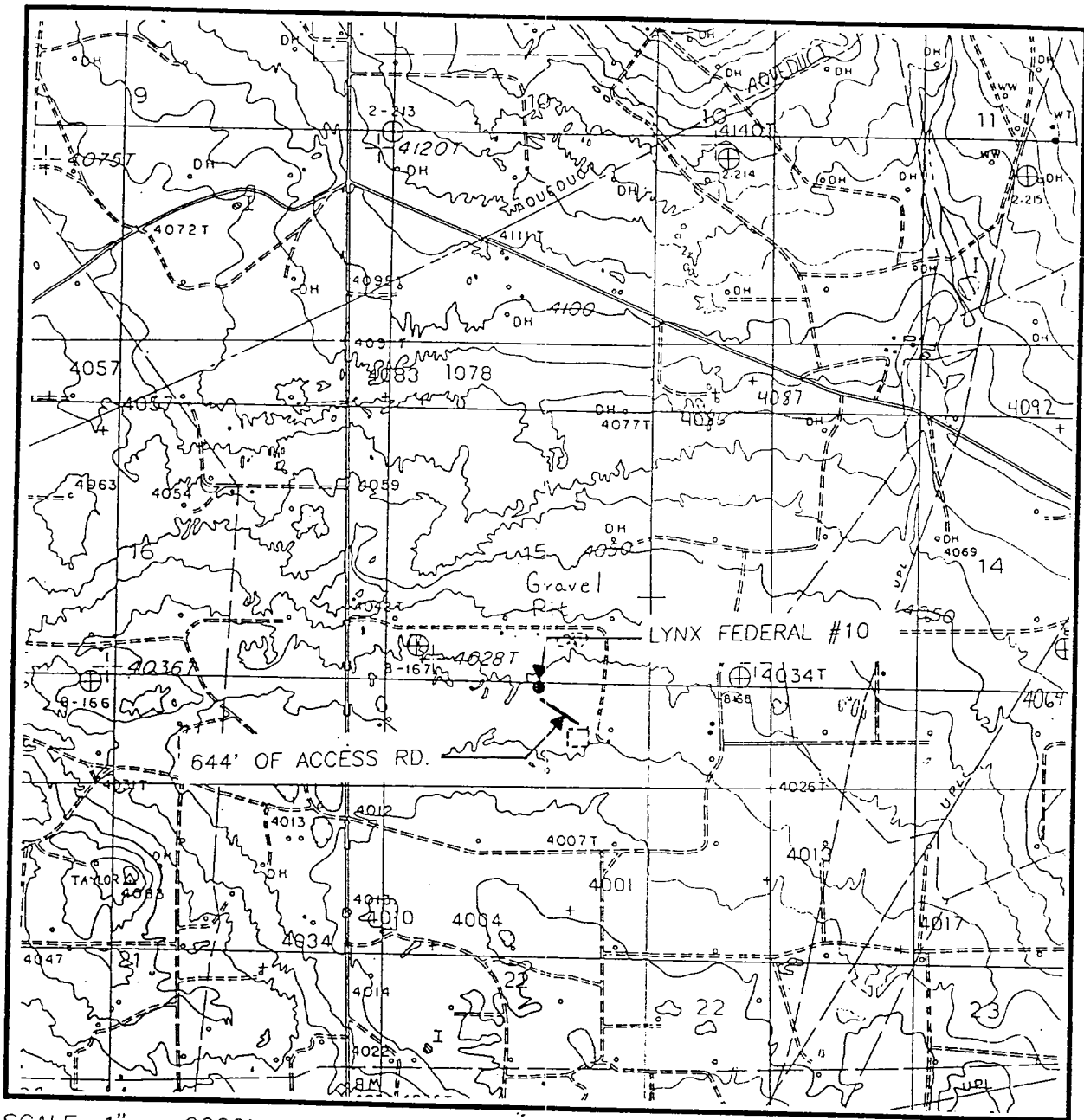
Surface Location									
UL or lot No.	Section	Township	Range	Lot Idn	Feet from the	North/South line	Feet from the	East/West line	County
N	15	17 S	32 E		1180	SOUTH	2330	WEST	LEA

Bottom Hole Location If Different From Surface									
UL or lot No.	Section	Township	Range	Lot Idn	Feet from the	North/South line	Feet from the	East/West line	County
Dedicated Acres <b>40</b>	Joint or Infill	Consolidation Code	Order No. <b>NSL-3934 (SD)</b>						

NO ALLOWABLE WILL BE ASSIGNED TO THIS COMPLETION UNTIL ALL INTERESTS HAVE BEEN CONSOLIDATED  
OR A NON-STANDARD UNIT HAS BEEN APPROVED BY THE DIVISION

				<b>OPERATOR CERTIFICATION</b>  I hereby certify the the information contained herein is true and complete to the best of my knowledge and belief.  Signature <u>Marc Wise</u> Printed Name <u>Marc Wise</u> Title <u>President</u> Date <u>12/31/97</u>
				<b>SURVEYOR CERTIFICATION</b>  I hereby certify that the well location shown on this plat was plotted from field notes of actual surveys made by me or under my supervision, and that the same is true and correct to the best of my belief.  DECEMBER 18, 1997 Date Surveyed Signature & Seal <u>[Signature]</u> DMCC Professional Surveyor Certificate No. <u>JOHN W. WEST 676</u> <u>RONALD J. EIDSON 3239</u> <u>RONALD J. EIDSON 12641</u>

# LOCATION VERIFICATION MAP



SCALE: 1" = 2000'

CONTOUR INTERVAL:  
DOG LAKE - 10'  
WITH 5' SUPPL.  
MALJAMAR - 10'

SEC. 15 TWP. 17-S RGE. 32-E

SURVEY N.M.P.M.

COUNTY LEA

DESCRIPTION 1180' FSL & 2330' FWL

ELEVATION 4030

OPERATOR LYNX PETROLEUM

LEASE LYNX FEDERAL

U.S.G.S. TOPOGRAPHIC MAP

DOG LAKE, MALJAMAR, N.M.

**JOHN WEST ENGINEERING**  
**HOBBS, NEW MEXICO**

**(505) 393-3117**

## SUPPLEMENTAL DRILLING DATA

Lynx Petroleum Consultants, Inc.  
Lynx Federal No. 10  
1180' FSL and 2,330' FWL  
Section 15, T-17S, R-32E  
Lea County, NM

The following items supplement Form 3160-3 in accordance with instructions contained in Onshore Oil and Gas Orders #1 and #2, and all other applicable federal and state regulations.

1. SURFACE FORMATION : Triassic Age

2. ESTIMATED TOPS OF GEOLOGICAL MARKERS :

Rustler Anhy.	-	820'
Yates	-	2,160'
Seven Rivers	-	2,510'
Queen	-	3,125'
Grayburg	-	3,525'
San Andres	-	3,900'

3. ESTIMATED DEPTHS TO WATER, OIL, OR GAS FORMATIONS :

Fresh Water	-	Not in the water basin
Gas	-	3,125' in the Queen sand
* Oil, Gas, and Water	-	3,525'-4,350' in the Grayburg and San Andres

\* Productive horizons to be protected by 5 ½" casing and cement tied back to base of salt at approximately 2,070'.

4. PROPOSED CASING PROGRAM : See Form 3160-3.

5. PRESSURE CONTROL EQUIPMENT : A blowout preventor stack will consist of at least a double-ram blowout preventor rated to 3000 psi working pressure. A sketch of the B.O.P. and Choke Manifold are shown in Exhibits #1 and #1A.

6. CIRCULATING MEDIUMS : Natural fresh water mud will be used to 850'. Brine water will be used to 3,500'. Additives will be used as recommended by the engineer. The Grayburg-San Andres portion of the hole will be drilled using a salt-gel system with mud weight of 10#/gal.

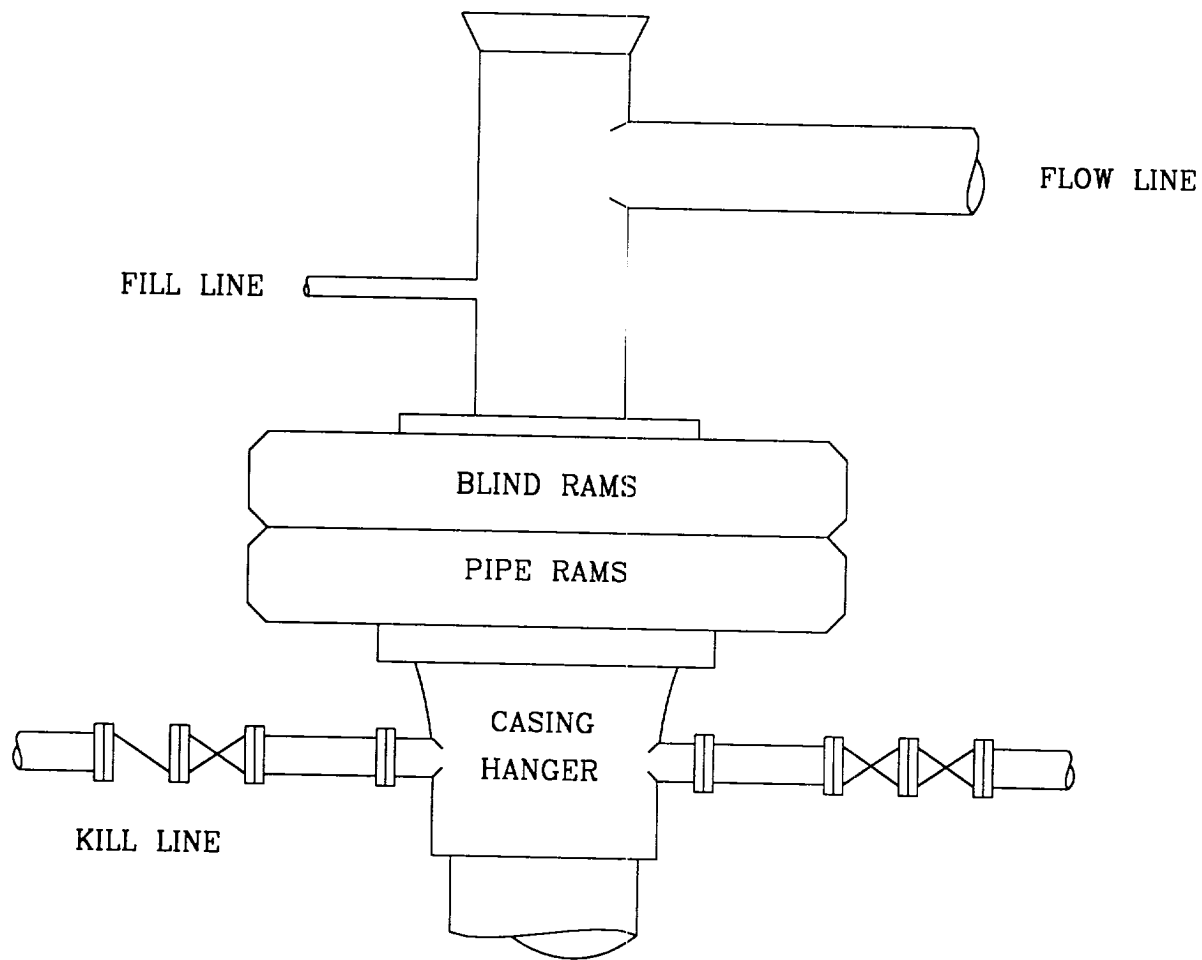
7. AUXILIARY EQUIPMENT : Full opening Kelly cock, to fit the drill string in use, will be kept on the rig floor at all times.

8. TESTING, LOGGING, AND CORING PROGRAM :

- Samples - Run samples at 10' intervals from 2,000' to T.D.
- D.S.T.'s - Possible D.S.T. in Queen zone.
- Logging - Gamma Ray, Compensated Neutron, Formation Density, Dual Laterolog, and Caliper run from T.D. to 850'.
- Coring - None planned.

9. ABNORMAL PRESSURES AND TEMPERATURES : None anticipated.  
Maximum bottom hole pressure should not exceed 1,900 psi.

10. ANTICIPATED STARTING DATE : Drilling will commence about February 15, 1998. Drilling should be complete within 14 days. Completion operations (perforations and stimulation) will follow drilling operations.



Location: SE/4, SW/4  
 Sec. 15, T-17S, R-32E  
 Lea County, NM

LYNX FEDERAL NO. 10  
 BLOWOUT PREVENTER STACK

EXHIBIT NO. 1

12/24/97

Scale: None