

District I
PO Box 1980, Hobbs, NM 88241-1980
District II
PO Drawer DD, Artesia, NM 88211-0719
District III
1000 Rio Brazos Rd., Aztec, NM 87410
District IV
PO Box 2088, Santa Fe, NM 87504-2088

State of New Mexico
Energy, Minerals & Natural Resources Department

OIL CONSERVATION DIVISION
PO Box 2088
Santa Fe, NM 87504-2088

Form C-101
Revised February 10, 1994

Instructions on back
Submit to Appropriate District Office
State Lease - 6 Copies
Fee Lease - 5 Copies

☐ AMENDED REPORT

APPLICATION FOR PERMIT TO DRILL, RE-ENTER, DEEPEN, PLUGBACK, OR ADD A ZONE

Operator Name and Address: Chesapeake Operating, Inc. P. O. Box 18496 Oklahoma City, OK 73154-0496		OGRID Number 147179
		API Number 30 - 0. 25-34466
Property Code 23520	Property Name CARTWRIGHT 7	Well No. 1

Surface Location

UL or lot no.	Section	Township	Range	Lot Idn	Feet from the	North/South line	Feet from the	East/West line	County
E	7	16S	37E		2088	North	812	West	LEA

Proposed Bottom Hole Location If Different From Surface

UL or lot no.	Section	Township	Range	Lot Idn	Feet from the	North/South line	Feet from the	East/West line	County
Proposed Pool 1 N. E. Lovington-Penn					Proposed Pool 2				

Work Type Code N	Well Type Code O	Cable/Rotary R	Lease Type Code P	Ground Level Elevation 3852'
Multiple No	Proposed Depth 11,900'	Formation Strawn	Contractor Patterson #45	Spud Date 11-10-98

Proposed Casing and Cement Program

Hole Size	Casing Size	Casing weight/foot	Setting Depth	Sacks of Cement	Estimated TOC
17-1/2"	13-3/8"	48#	450'	500	Surface
14-1/4"	9-5/8"	40#	4,500'	2000	Surface
7-7/8"	5-1/2"	17#	11,900'	1500	4000' ±

Describe the proposed program. If this application is to DEEPEN or PLUG BACK give the data on the present productive zone and proposed new productive zone. Describe the blowout prevention program, if any. Use additional sheets if necessary.

Chesapeake Operating proposes to drill to 11,900 T.D. in the Strawn formation with Patterson as the drilling contractor.

The BOP stack will consist of 11" 5M# Double Ram Preventer with blind & pipe rams & 11" 5M# annular.

I hereby certify that the information given above is true and complete to the best of my knowledge and belief.

Signature:

Barbara J. Bale

Printed name:

Barbara J. Bale

Title:

Regulatory Analyst

Date:

02/04/2000

Phone:

(405) 848-8000

OIL CONSERVATION DIVISION

Approved by:

Title:

Approval Date:

FEB 08 2000

Expiration Date:

Conditions of Approval:

Attached ☐

DISTRICT I
P.O. Box 1900, Hobbs, NM 88241-1900

State of New Mexico
Energy, Minerals and Natural Resources Department

Form C-102
Revised February 10, 1994
Submit to Appropriate District Office
State Lease - 4 Copies
Fee Lease - 3 Copies

DISTRICT II
P.O. Drawer DD, Artesia, NM 88211-0719

DISTRICT III
1000 Rio Brazos Rd., Aztec, NM 87410

OIL CONSERVATION DIVISION

P.O. Box 2088
Santa Fe, New Mexico 87504-2088

DISTRICT IV
P.O. Box 2088, Santa Fe, NM 87504-2088

☐ AMENDED REPORT

WELL LOCATION AND ACREAGE DEDICATION PLAT

API Number 30-025-34466	Pool Code 40760	Pool Name N.E. Lovington-Penn
Property Code 23520	Property Name CARTWRIGHT "7"	Well Number 1
OGRID No. 147179	Operator Name CHESAPEAKE OPERATING, INC.	Elevation 3852

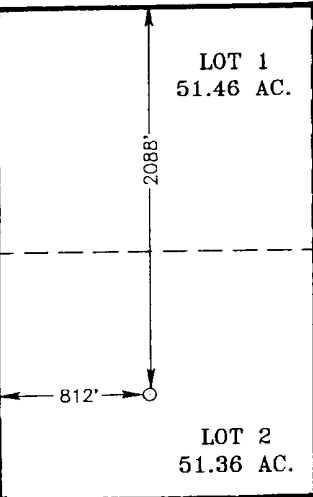
Surface Location

UL or lot No. E	Section 7	Township 16 S	Range 37 E	Lot Idn	Feet from the 2088	North/South line NORTH	Feet from the 812	East/West line WEST	County LEA
--------------------	--------------	------------------	---------------	---------	-----------------------	---------------------------	----------------------	------------------------	---------------

Bottom Hole Location If Different From Surface

UL or lot No.	Section	Township	Range	Lot Idn	Feet from the	North/South line	Feet from the	East/West line	County
Dedicated Acres 80	Joint or Infill	Consolidation Code	Order No.						

NO ALLOWABLE WILL BE ASSIGNED TO THIS COMPLETION UNTIL ALL INTERESTS HAVE BEEN CONSOLIDATED
OR A NON-STANDARD UNIT HAS BEEN APPROVED BY THE DIVISION

	NAD 27 NME Y=706560.1 N X=818206.7 E		
LOT 1 51.46 AC.			
LOT 2 51.36 AC.			
LOT 3 51.28 AC.			
LOT 4 51.18 AC.			

OPERATOR CERTIFICATION

I hereby certify the the information contained herein is true and complete to the best of my knowledge and belief.

Barbara J. Bale
Signature

Barbara J. Bale
Printed Name

Regulatory Analyst
Title

February 4, 2000
Date

SURVEYOR CERTIFICATION

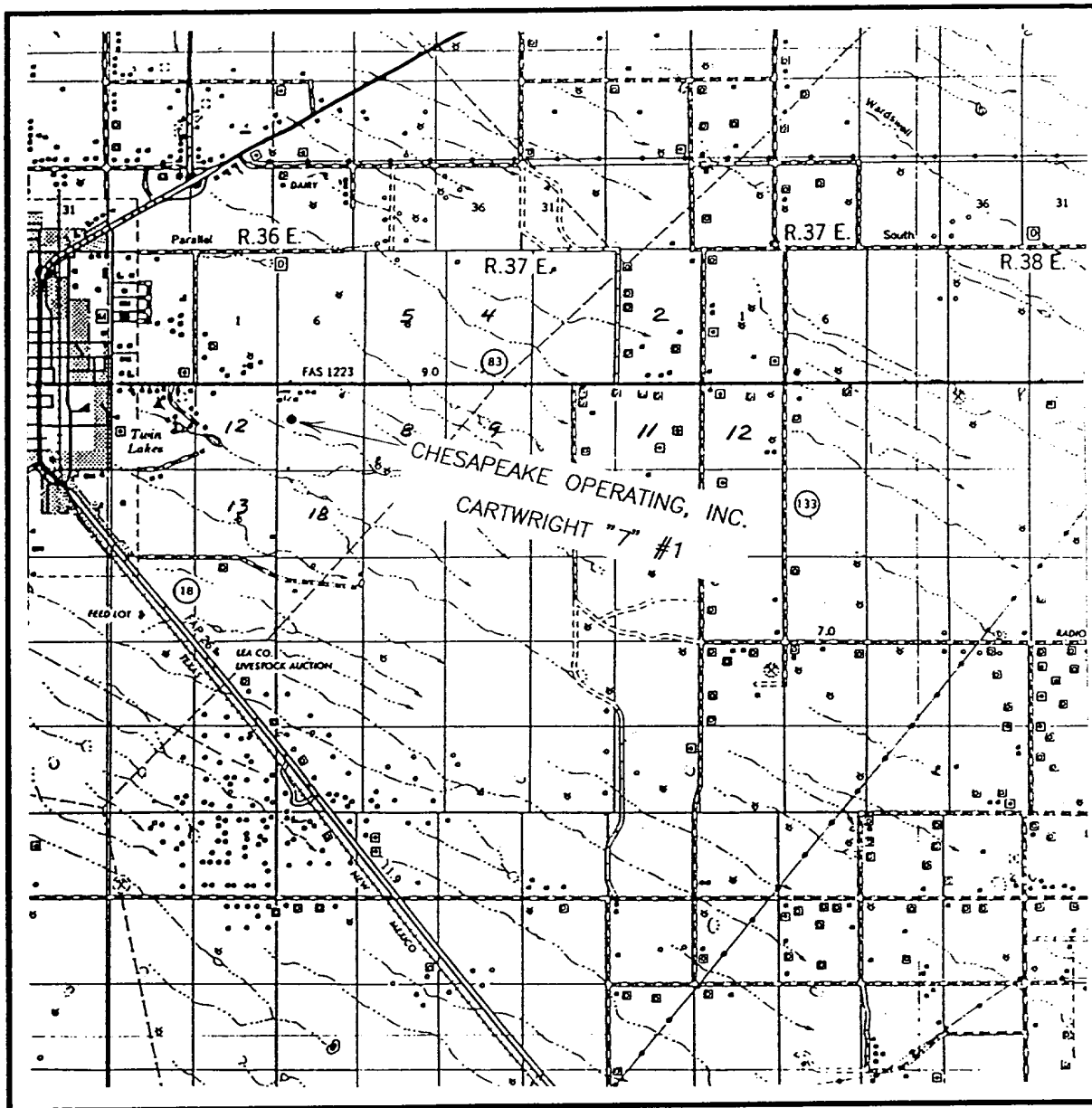
I hereby certify that the well location shown on this plat was plotted from field notes of actual surveys made by me or under my supervision and that the same is true and correct to the best of my belief.

JULY 8, 1998
Date Surveyed

Signature & Seal of Professional Surveyor
Ronald J. Edson
W.O. Num. 98-12-0924

Certificate No. RONALD J. EDSON, 3239
GARY L. EDSON, 12841
RONALD J. EDSON, 12185

VICINITY MAP



SCALE: 1" = 2 MILES

SEC. 7 TWP. 16-S RGE. 37-E

SURVEY N.M.P.M.

COUNTY LEA

DESCRIPTION 2088' FNL & 812' FWL

ELEVATION 3852'

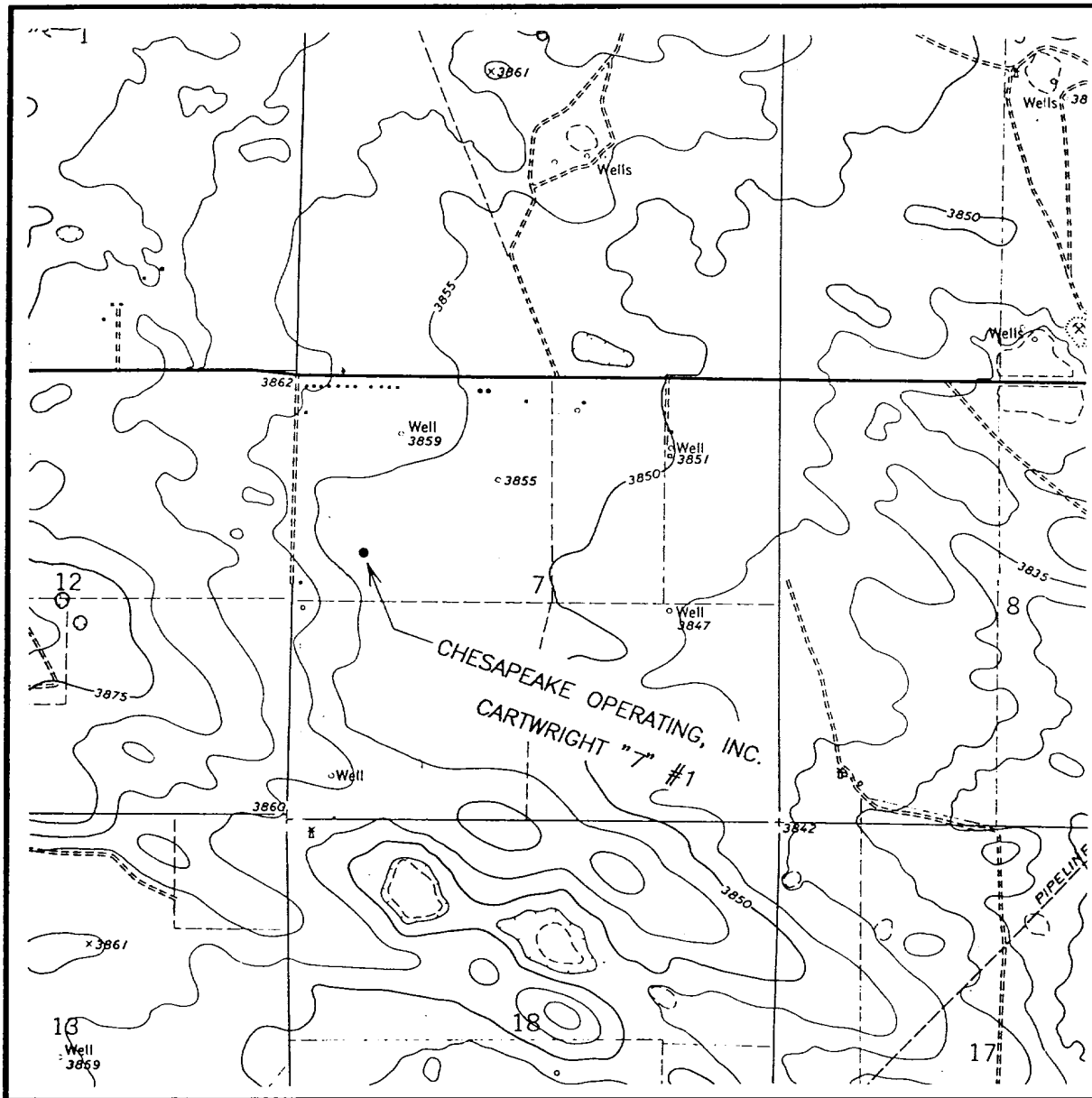
OPERATOR CHESAPEAKE OPERATING, INC.

LEASE CARTWRIGHT "7" #1

JOHN WEST ENGINEERING
HOBBS, NEW MEXICO
(505) 393-3117



LOCATION VERIFICATION MAP



SCALE: 1" = 2000'

CONTOUR INTERVAL - 5'

SEC. 7 TWP. 16-S RGE. 37-E

SURVEY N.M.P.M.

COUNTY LEA

DESCRIPTION 2088' FNL & 812' FWL

ELEVATION 3852'

OPERATOR CHESAPEAKE OPERATING, INC.

LEASE CARTWRIGHT "7" #1

U.S.G.S. TOPOGRAPHIC MAP

LOVINGTON, N.M.

**JOHN WEST ENGINEERING
HOBBS, NEW MEXICO**

(505) 393-3117



BLOWOUT PREVENTOR SCHEMATIC

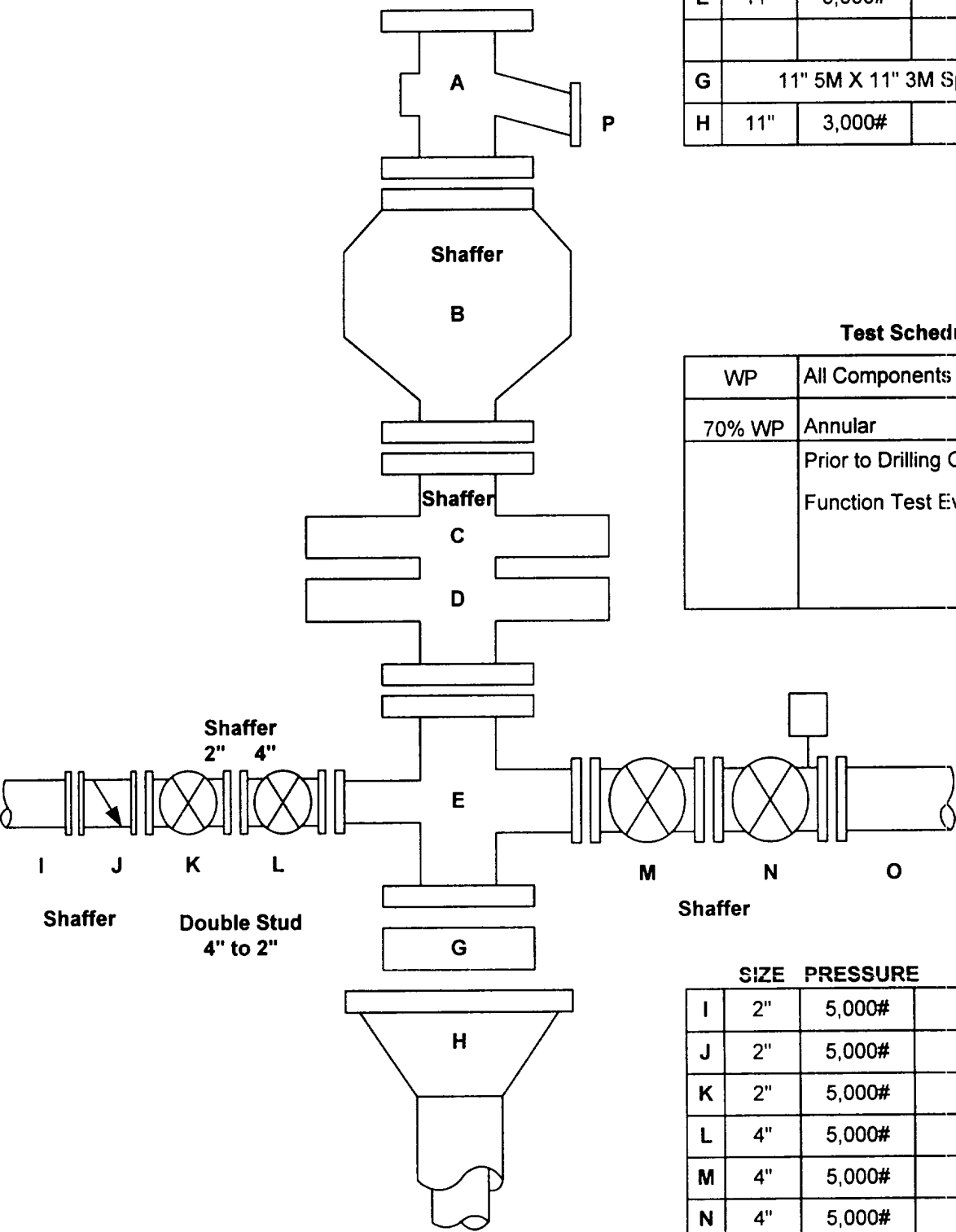
CHESAPEAKE OPERATING INC

WELL : CARTWRIGHT 7-1

RIG : PATTERSON

COUNTY : LEA

STATE : NEW MEXICO



	SIZE	PRESSURE	DESCRIPTION
A	13"		Bell Nipple
B	11"	5,000#	Annular
C	11"	5,000#	4-1/2" Pipe Rams
D	11"	5,000#	Blind Rams
E	11"	5,000#	Drilling Spool
G	11" 5M X 11" 3M Spool 14" tall		
H	11"	3,000#	Bradenhead

Test Schedule	
WP	All Components
70% WP	Annular
	Prior to Drilling Out
	Function Test Every Trip

	SIZE	PRESSURE	DESCRIPTION
I	2"	5,000#	Kill Line
J	2"	5,000#	Check Valve
K	2"	5,000#	Gate Valve
L	4"	5,000#	Gate Valve
M	4"	5,000#	Gate Valve
N	4"	5,000#	Gate Valve
O	4"	5,000#	Choke Line
P	12"		Flow Line

