

DISTRICT I
P.O. Box 1980, Hobbs, NM 88241-1980

DISTRICT II
P.O. Drawer DD, Artesia, NM 88211-0719

DISTRICT III
1000 Rio Brazos Rd., Aztec, NM 87410

DISTRICT IV
P.O. BOX 2088, SANTA FE, N.M. 87504-2088

State of New Mexico
Energy, Minerals and Natural Resources Department

Form C-102
Revised February 10, 1994
Submit to Appropriate District Office
State Lease - 4 Copies
Fee Lease - 3 Copies

OIL CONSERVATION DIVISION

P.O. Box 2088
Santa Fe, New Mexico 87504-2088

☐ AMENDED REPORT

WELL LOCATION AND ACREAGE DEDICATION PLAT

API Number 30025-34480	Pool Code	Pool Name Northeast Lovington Penn
Property Code	Property Name CAYUMA	Well Number 1
OGRID No. 166111	Operator Name CONCHO RESOURCES, INC.	Elevation 3879

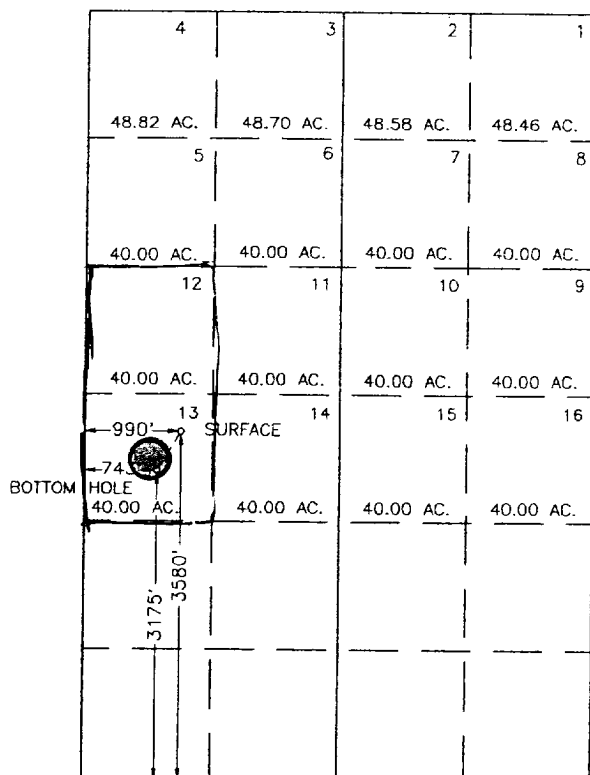
Surface Location

UL of lot No.	Section	Township	Range	Lot Idn	Feet from the	North/South line	Feet from the	East/West line	County
LOT 13	1	16 S	36 E		3580	SOUTH	990	WEST	LEA

Bottom Hole Location If Different From Surface

UL of lot No.	Section	Township	Range	Lot Idn	Feet from the	North/South line	Feet from the	East/West line	County
LOT 13	1	16 S	36 E		3175	SOUTH	743	WEST	LEA
Dedicated Acres 80	Joint or Infill	Consolidation Code	Order No.						

NO ALLOWABLE WILL BE ASSIGNED TO THIS COMPLETION UNTIL ALL INTERESTS HAVE BEEN CONSOLIDATED
OR A NON-STANDARD UNIT HAS BEEN APPROVED BY THE DIVISION



OPERATOR CERTIFICATION

I hereby certify the the information
contained herein is true and complete to the
best of my knowledge and belief.

Signature

Terri Statham
Printed Name

Production Analyst
Title

12/4/98
Date

SURVEYOR CERTIFICATION

I hereby certify that the well location shown
on this plat was plotted from field notes of
actual surveys made by me or under my
supervision, and that the same is true and
correct to the best of my belief.

OCTOBER 7, 1998

Date Surveyed J. EIDSON DMCC

Signature & Seal of
Professional Surveyor

10-13-98
10-11-13-98

Certified by JOHN W. WEST 676
J. EIDSON 3239
J. EIDSON 12641