

District I
PO Box 1980, Hobbs, NM 88241-1980
District II
811 South First, Artesia, NM 88210
District III
1000 Rio Brazos Rd., Aztec, NM 87410
District IV
2040 South Pacheco, Santa Fe, NM 87505

State of New Mexico
Energy, Minerals & Natural Resources Department

OIL CONSERVATION DIVISION
2040 South Pacheco
Santa Fe, NM 87505

Form C-101
Revised October 18, 1994
Instructions on back
Submit to Appropriate District Office
State Lease - 6 Copies
Fee Lease - 5 Copies

☐ AMENDED REPORT

APPLICATION FOR PERMIT TO DRILL, RE-ENTER, DEEPEN, PLUGBACK, OR ADD A ZONE

¹ Operator Name and Address. David H. Arrington Oil & Gas, Inc. P.O. Box 2071 Midland, Texas 79702		² OGRID Number 005898
		³ API Number 30-025-34530
⁴ Property Code 23864	⁵ Property Name Brassie	⁶ Well No. 1

⁷ Surface Location

UL or lot no.	Section	Township	Range	Lot Idn	Feet from the	North/South line	Feet from the	East/West line	County
I	33	16S	36E		2310'	South	990'	East	Lea

⁸ Proposed Bottom Hole Location If Different From Surface

UL or lot no.	Section	Township	Range	Lot Idn	Feet from the	North/South line	Feet from the	East/West line	County
⁹ Proposed Pool 1 Wildcat Abo					¹⁰ Proposed Pool 2				

¹¹ Work Type Code N	¹² Well Type Code O	¹³ Cable/Rotary R	¹⁴ Lease Type Code F	¹⁵ Ground Level Elevation 3895'
¹⁶ Multiple N	¹⁷ Proposed Depth 9100'	¹⁸ Formation Abo	¹⁹ Contractor N/A	²⁰ Spud Date 11/15/98

²¹ Proposed Casing and Cement Program

Hole Size	Casing Size	Casing weight/foot	Setting Depth	Sacks of Cement	Estimated TOC
17 1/2"	13 3/8"	48#	450'	460 Class C	Surface
11"	8 5/8"	32#	4800'	200 Class C	Surface
7 7/8"	5 1/2"	17#	9100'	800 sx 50/50 Poz A	6100'

²² Describe the proposed program. If this application is to DEEPEN or PLUG BACK give the data on the present productive zone and proposed new productive zone. Describe the blowout prevention program, if any. Use additional sheets if necessary.

1. Drill 7 1/2" hole to 450' with freshwater. Run 13 3/8" casing and cement to surface. Nipple up BOP and test to 1000 psi.
2. Drill 11" hole to 4800' with fresh to brine mud. Run 8 5/8" casing and cement to surface. Nipple up BOP and test to 3000 psi.
3. Drill 7 7/8" hole to TD 9100' with freshwater mud. Run 5 1/2" casing to TD and cement. Complete well.

Permit Expires 1 Year From Approval
Date Unless Drilling Underway

²³ I hereby certify that the information given above is true and complete to the best of my knowledge and belief.

Signature:

Printed name:

David H. Arrington

Title:

President

OIL CONSERVATION DIVISION

Approved by: ORIGINAL SIGNED BY

Title:

Approval Date: NOV 13 1998

Expiration Date:

DISTRICT I
P. O. Box 1980
Hobbs, NM 88241-1980

DISTRICT II
P. O. Drawer DD
Artesia, NM 88211-0719

DISTRICT III
1000 Rio Brazos Rd.
Aztec, NM 87410

DISTRICT IV
P. O. Box 2088
Santa Fe, NM 87507-2088

State of New Mexico
Energy, Minerals, and Natural Resources Department

OIL CONSERVATION DIVISION
P. O. Box 2088
Santa Fe, New Mexico 87504-2088

Form C-102
Revised 02-10-94

Instructions on back

Submit to the Appropriate
District Office
State Lease - 4 copies
Fee Lease - 3 copies

☐ AMENDED REPORT

WELL LOCATION AND ACREAGE DEDICATION PLAT

1 API Number 30-025-34530		2 Pool Code -		3 Pool Name Gilcat, Abo	
4 Property Code 23264		5 Property Name BRASSIE			
6 OGRID No. 5898		7 Operator Name DAVID H. ARRINGTON OIL & GAS, INC.			
				8 Well Number 1	
				9 Elevation 3895'	

10 SURFACE LOCATION

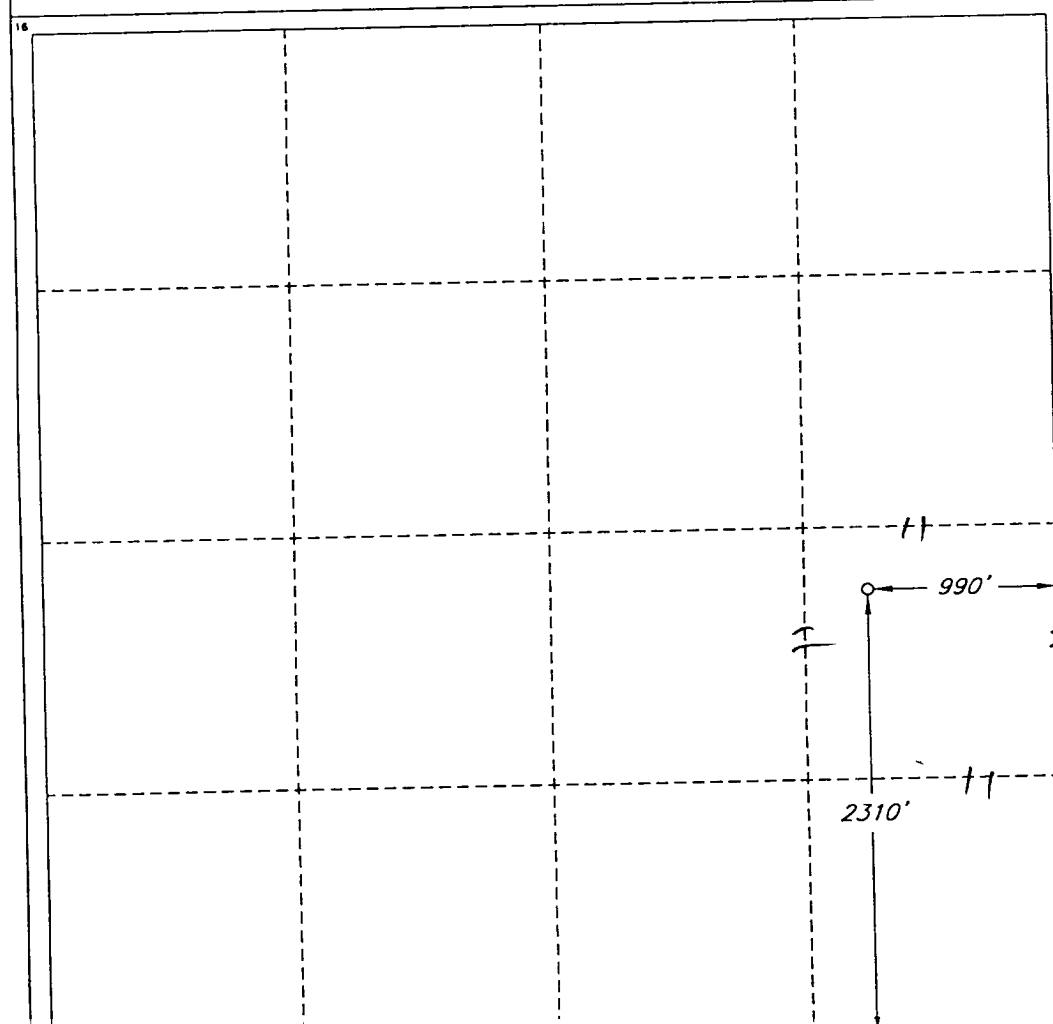
UL or lot no. 1	Section 33	Township 16 SOUTH	Range 36 EAST, N.M.P.M.	Lot Ida	Feet from the 2310'	North/South line SOUTH	Feet from the 990'	East/West line EAST	County LEA
--------------------	---------------	----------------------	----------------------------	---------	------------------------	---------------------------	-----------------------	------------------------	---------------

11 BOTTOM HOLE LOCATION IF DIFFERENT FROM SURFACE

UL or lot no.	Section	Township	Range	Lot Ida	Feet from the	North/South line	Feet from the	East/West line	County
---------------	---------	----------	-------	---------	---------------	------------------	---------------	----------------	--------

12 Dedicated Acres 40	13 Joint or Infill	14 Consolidation Code	15 Order No.
--------------------------	--------------------	-----------------------	--------------

NO ALLOWABLE WELL BE ASSIGNED TO THIS COMPLETION UNTIL ALL INTERESTS HAVE BEEN CONSOLIDATED OR A NON-STANDARD UNIT HAS BEEN APPROVED BY THE DIVISION



OPERATOR CERTIFICATION

I hereby certify that the information contained herein is true and complete to the best of my knowledge and belief.

Signature

Printed Name

Title

Date

SURVEYOR CERTIFICATION

I hereby certify that the well location shown on this plat was plotted from field notes of actual surveys made by me or under my supervision, and that the same is true and correct to the best of my belief.

Date of Survey

Signature of Professional Surveyor

Certificate No. 12128
ROGER M. ROBBINS P.S. #12128

ELF
ABOVE DATE DOES NOT
INDICATE WHEN
CONFIDENTIAL LOGS
WILL BE RELEASED