

DISTRICT I
P. O. Box 1980
Hobbs, NM 88241-1980

DISTRICT II
P. O. Drawer DD
Artesia, NM 88211-0719

DISTRICT III
1000 Rio Brazos Rd.
Aztec, NM 87410

DISTRICT IV
P. O. Box 2088
Santa Fe, NM 87507-2088

State of New Mexico
Energy, Minerals, and Natural Resources Department

OIL CONSERVATION DIVISION
P. O. Box 2088
Santa Fe, New Mexico 87504-2088

Form C-102
Revised 02-10-94

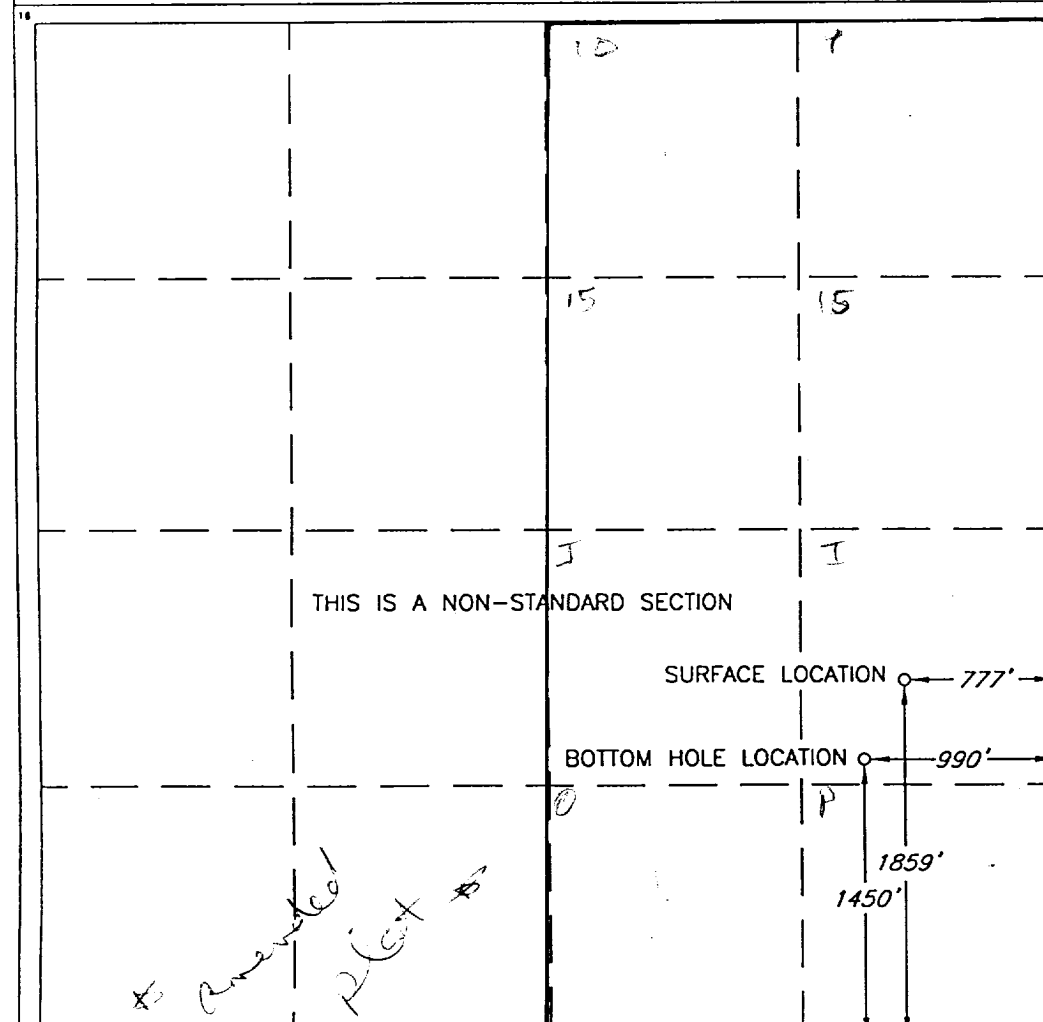
Instructions on back

Submit to the Appropriate
District Office
State Lease - 4 copies
Fee Lease - 3 copies

☐ AMENDED REPORT

WELL LOCATION AND ACREAGE DEDICATION PLAT

1 API Number 30-025-34536		2 Pool Code		3 Pool Name Wildcat TOWNSEND MORROW					
4 Property Code 23888		5 Property Name PARACHUTE ADAMS						6 Well Number 1	
7 OGRID No. 5859		8 Operator Name DAVID H. ARRINGTON OIL & GAS, INC.						9 Elevation 3996'	
10 SURFACE LOCATION									
UL or lot no. J&	Section 3	Township 16 SOUTH	Range 35 EAST, N.M.P.M.	Lot Ida	Feet from the 1859'	North/South line SOUTH	Feet from the 777'	East/West line EAST	County LEA
"BOTTOM HOLE LOCATION IF DIFFERENT FROM SURFACE									
UL or lot no. I	Section 3	Township 16 SOUTH	Range 35 EAST, N.M.P.M.	Lot Ida	Feet from the 1450'	North/South line SOUTH	Feet from the 990'	East/West line EAST	County LEA
12 Dedicated Acres 320		13 Joint or Infill		14 Consolidation Code		15 Order No.			
NO ALLOWABLE WELL BE ASSIGNED TO THIS COMPLETION UNTIL ALL INTERESTS HAVE BEEN CONSOLIDATED OR A NON-STANDARD UNIT HAS BEEN APPROVED BY THE DIVISION									



OPERATOR CERTIFICATION

I hereby certify that the information contained herein is true and complete to the best of my knowledge and belief.

Signature

Printed Name

Title

Date

SURVEYOR CERTIFICATION

I hereby certify that the well location shown on this plat was plotted from field notes of actual surveys made by me or under my supervision, and that the same is true and correct to the best of my belief.

Date of Survey

SEPTEMBER 22, 1998

Signature of Professional Surveyor

ROGER M. ROBBINS
REGISTERED SURVEYOR
NEW MEXICO
12128
Certificate No. 12128
#12128