

DISTRICT I  
P. O. Box 1980  
Hobbs, NM 88241-1980

State of New Mexico  
Energy, Minerals, and Natural Resources Department

Form C-102  
Revised 02-10-94

Instructions on back

DISTRICT II  
P. O. Drawer DD  
Artesia, NM 88211-0719

OIL CONSERVATION DIVISION

P. O. Box 2088  
Santa Fe, New Mexico 87504-2088

Submit to the Appropriate  
District Office  
State Lease - 4 copies  
Fee Lease - 3 copies

☐ AMENDED REPORT

DISTRICT III  
1000 Rio Brazos Rd.  
Aztec, NM 87410

DISTRICT IV  
P. O. Box 2088  
Santa Fe, NM 87507-2088

WELL LOCATION AND ACREAGE DEDICATION PLAT

<sup>1</sup> API Number 30-025-34630		<sup>2</sup> Pool Code 56270		<sup>3</sup> Pool Name Shoe Bar, Strawn, North	
<sup>4</sup> Property Code 24636		<sup>5</sup> Property Name MAYFLY '14' STATE COM			<sup>6</sup> Well Number 2
<sup>7</sup> OGRID No. 5898		<sup>8</sup> Operator Name DAVID H. ARRINGTON OIL & GAS, INC.			<sup>9</sup> Elevation 3978'

<sup>10</sup> SURFACE LOCATION

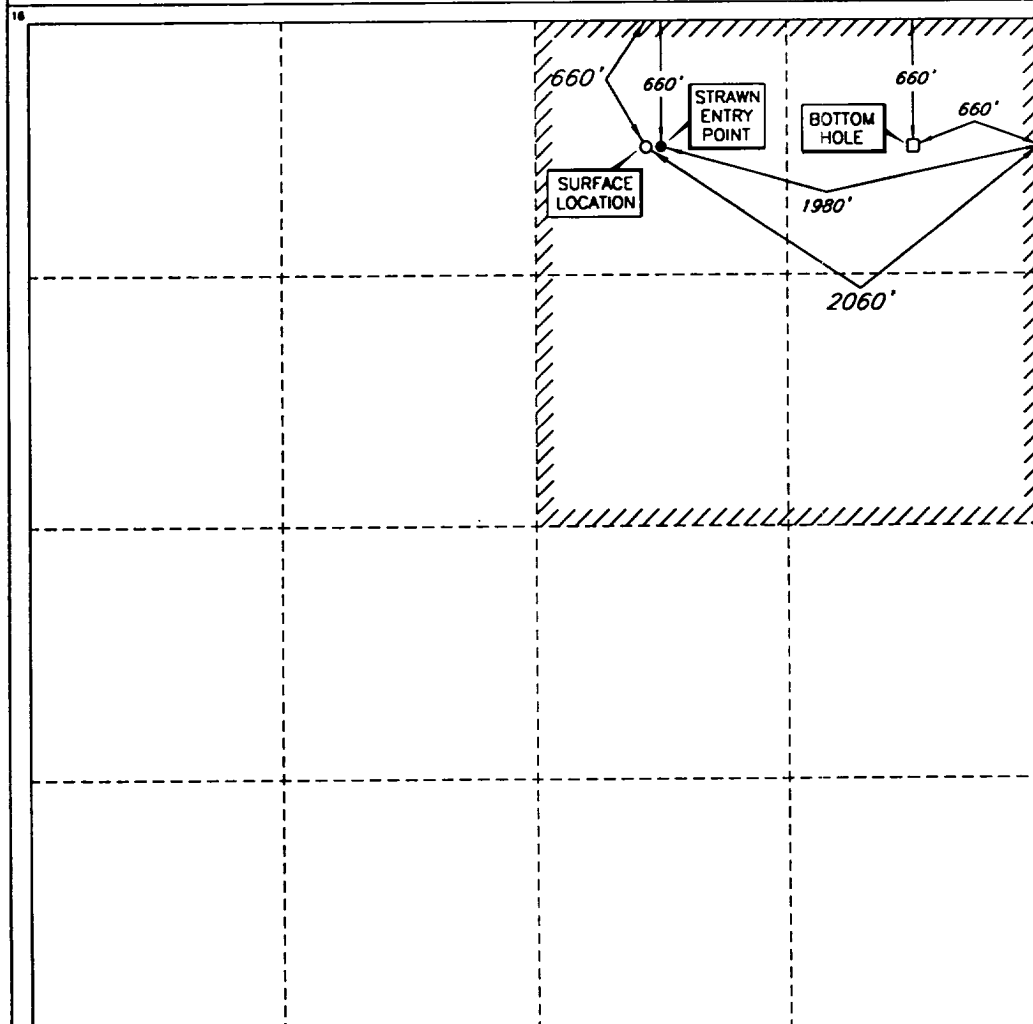
UL or lot no.	Section	Township	Range	Lot Ida	Feet from the	North/South line	Feet from the	East/West line	County
B	14	16 SOUTH	35 EAST, N.M.P.M.		660'	NORTH	2060'	EAST	LEA

"BOTTOM HOLE LOCATION IF DIFFERENT FROM SURFACE

UL or lot no.	Section	Township	Range	Lot Ida	Feet from the	North/South line	Feet from the	East/West line	County
A	14	16 SOUTH	35 EAST, N.M.P.M.		660'	NORTH	660'	EAST	LEA

<sup>12</sup> Dedicated Acres 160	<sup>13</sup> Joint or Infill	<sup>14</sup> Consolidation Code	<sup>15</sup> Order No.
--------------------------------------	-------------------------------	----------------------------------	-------------------------

NO ALLOWABLE WELL BE ASSIGNED TO THIS COMPLETION UNTIL ALL INTERESTS HAVE BEEN CONSOLIDATED OR A NON-STANDARD UNIT HAS BEEN APPROVED BY THE DIVISION



OPERATOR CERTIFICATION

I hereby certify that the information contained herein is true and complete to the best of my knowledge and belief.

Signature  
Printed Name  
Title  
Date

SURVEYOR CERTIFICATION

I hereby certify that the well location shown on this plat was plotted from field notes of actual surveys made by me or under my supervision, and that the same is true and correct to the best of my belief.

Date of Survey  
MAY 18, 1999

Signature and Seal  
Professional Surveyor  
ROGER M. ROBBINS  
12128  
Certified  
ROGER M. ROBBINS  
12128  
JOB #63598 / V.H.B.